

Program EVALPLOT
(Version 2015-2)

by

Dermott E. Cullen
(Present Contact Information)

Dermott E. Cullen
1466 Hudson Way
Livermore, CA 94550
U.S.A.

Tele: 925-443-1911

E.Mail:redcullen1@comcast.net
Web:home.comcast.net/~redcullen1

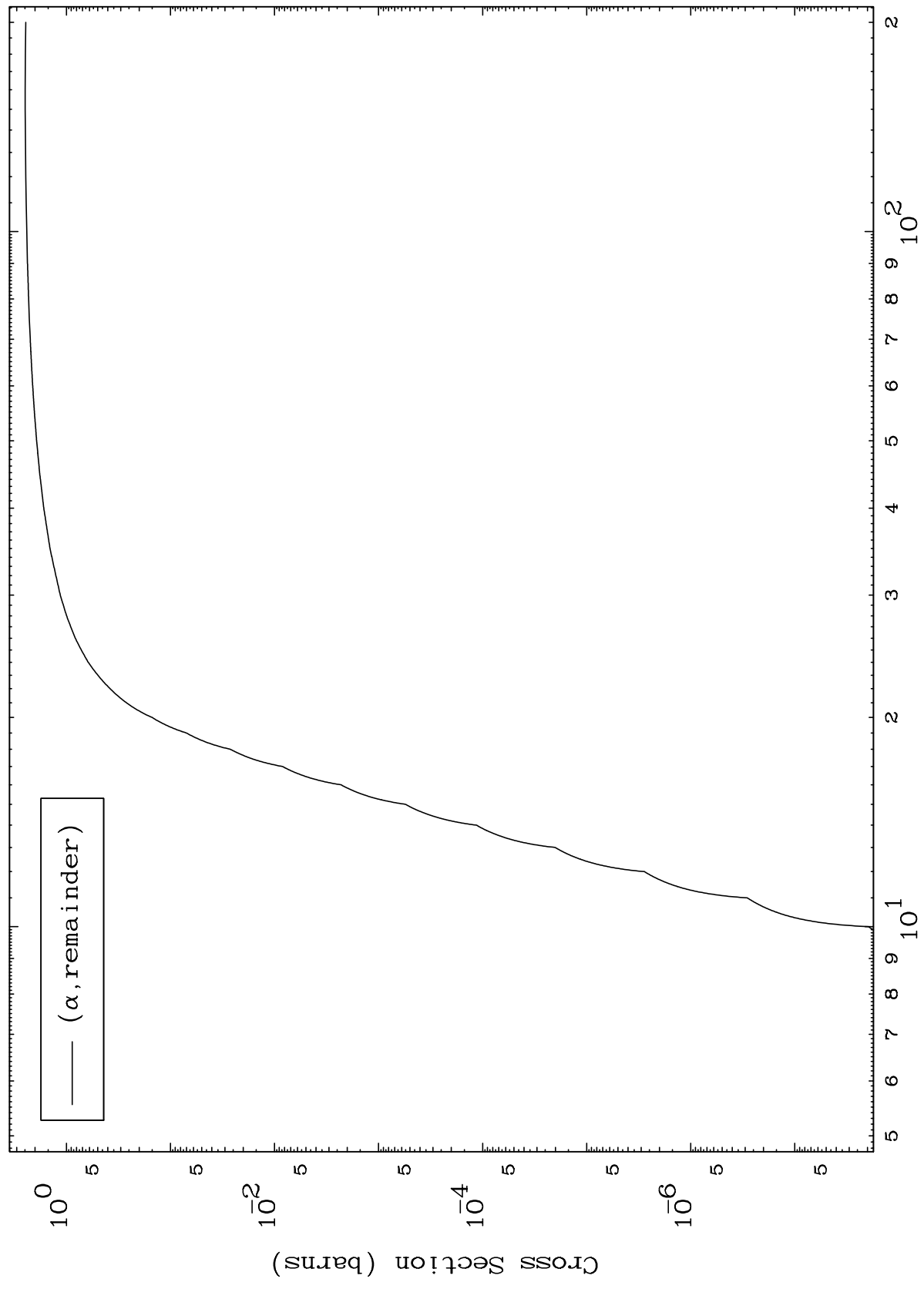
Press Mouse Button to Start

MAT 7449

α Major

0 Kelvin Cross Sections

74-W -188



1

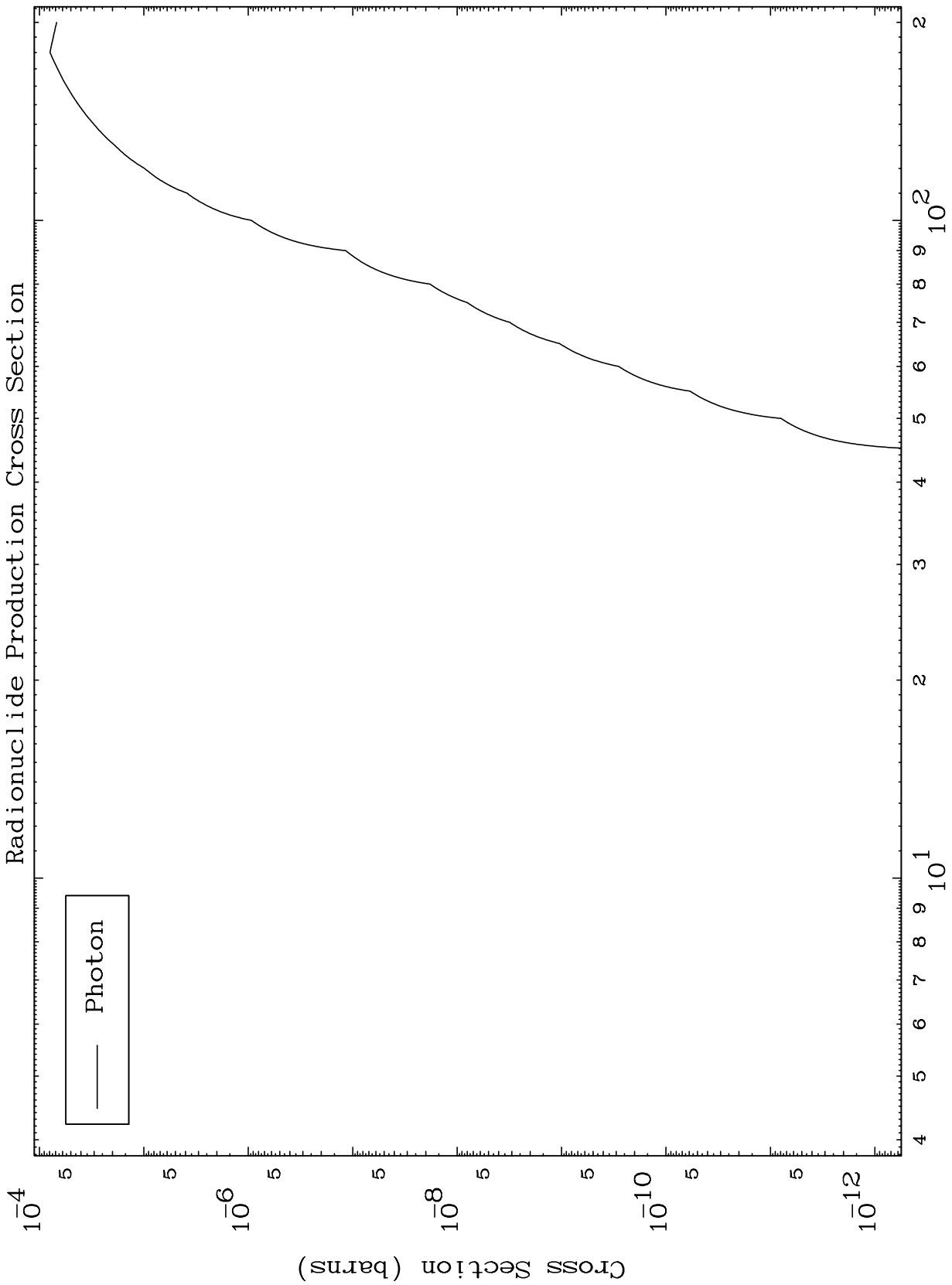
Incident Energy (MeV)

74-W -188

MAT 7449

74-W -188

α Fission
Radionuclide Production Cross Section



74-W -188

Incident Energy (MeV)

2