

Program EVALPLOT  
(Version 2015-2)

by

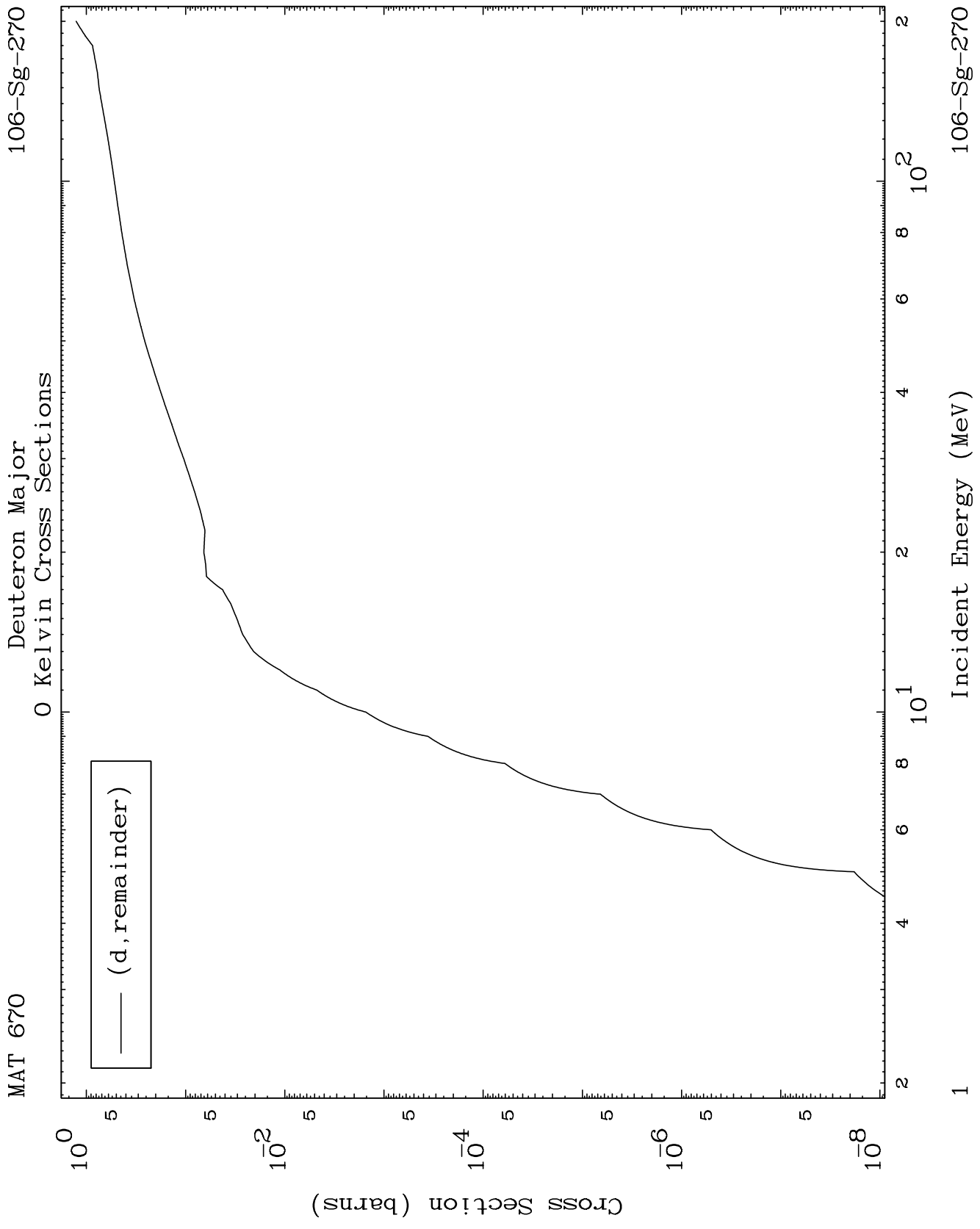
Dermott E. Cullen  
(Present Contact Information)

Dermott E. Cullen  
1466 Hudson Way  
Livermore, CA 94550  
U.S.A.

Tele: 925-443-1911

E.Mail:redcullen1@comcast.net  
Web:home.comcast.net/~redcullen1

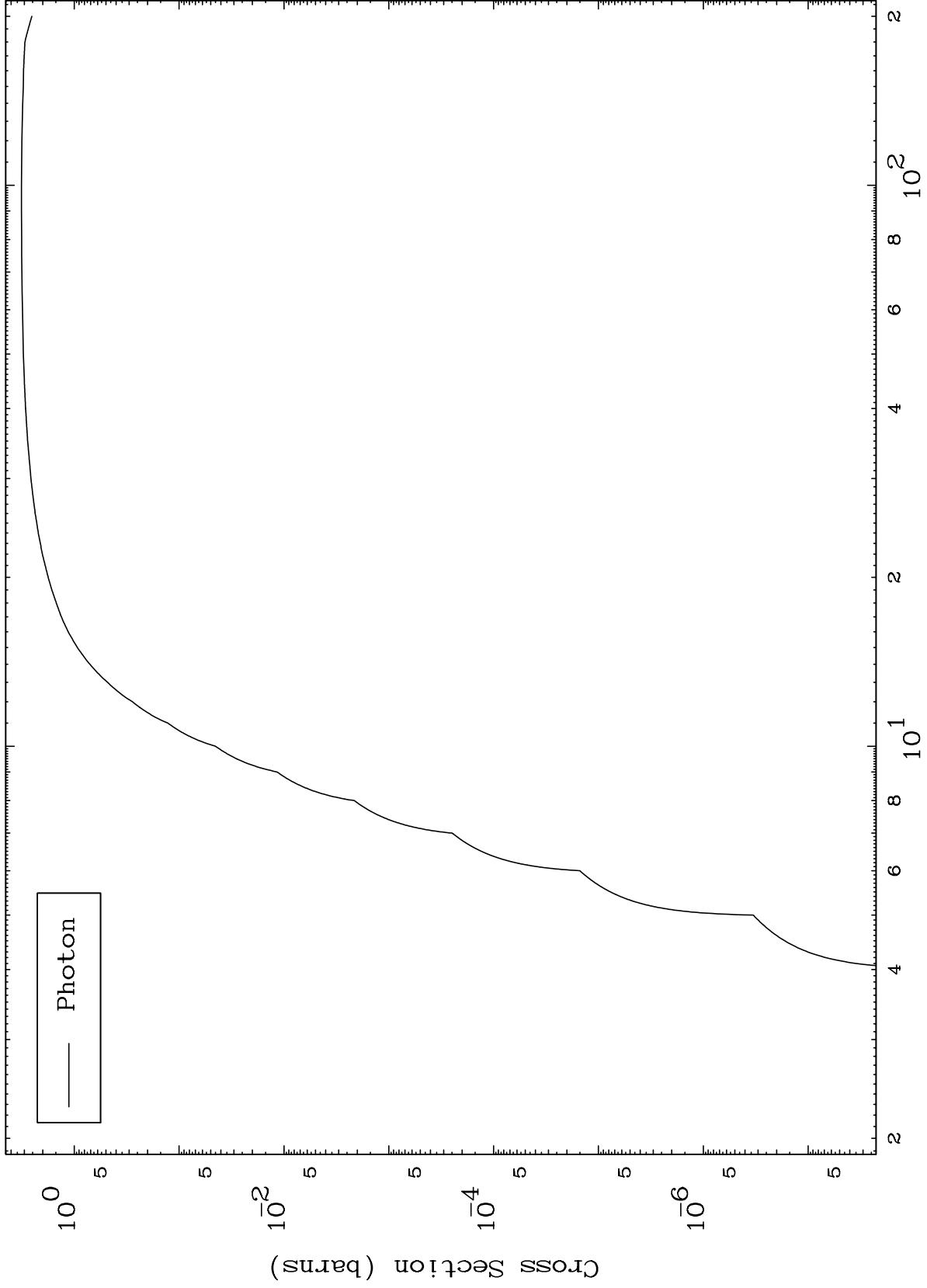
Press Mouse Button to Start



MAT 670

106-Sg-270

Deuteron Fission  
Radionuclide Production Cross Section



106-Sg-270

Incident Energy (MeV)

2