

Program EVALPLOT
(Version 2015-2)

by

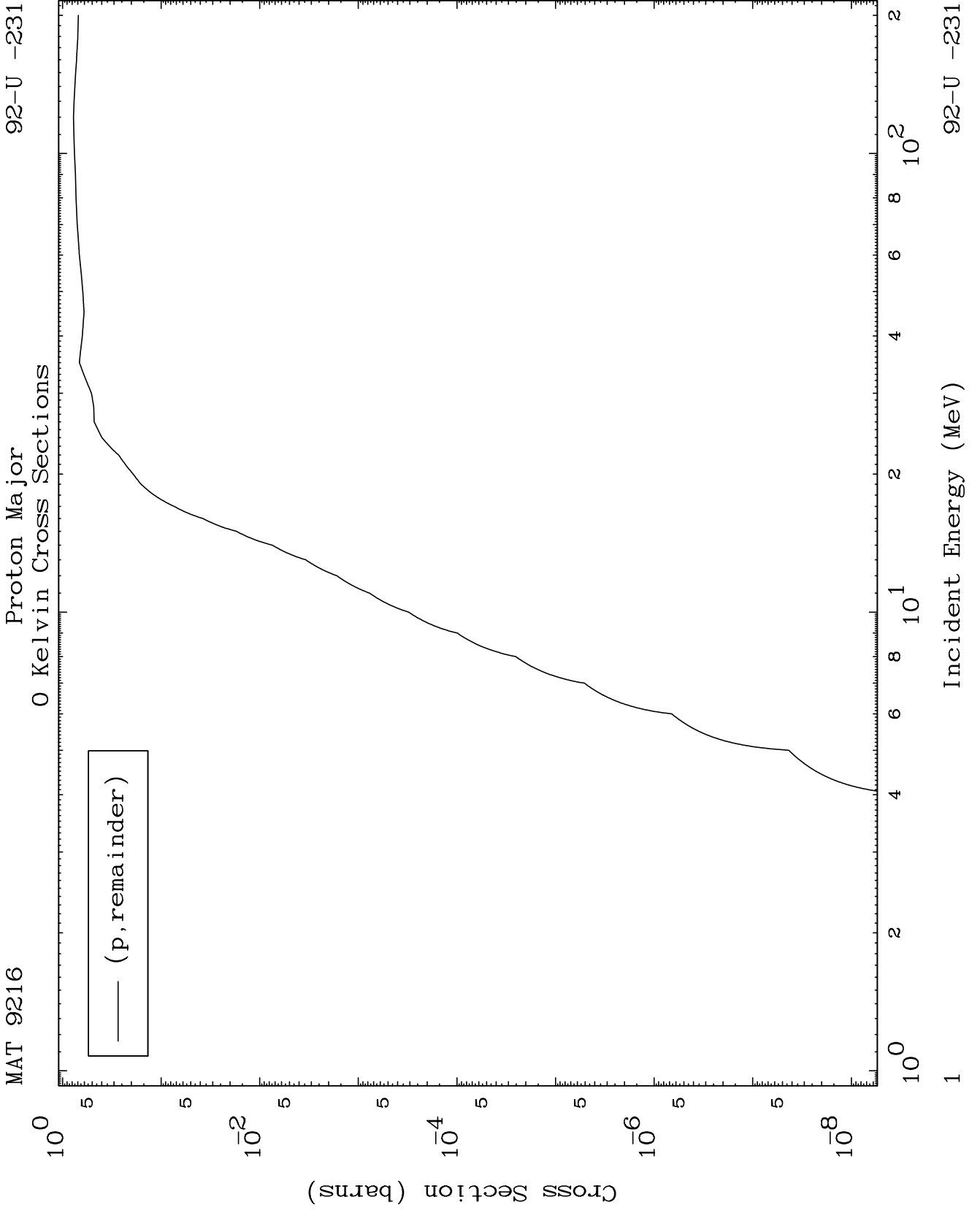
Dermott E. Cullen
(Present Contact Information)

Dermott E. Cullen
1466 Hudson Way
Livermore, CA 94550
U.S.A.

Tele: 925-443-1911

E.Mail:redcullen1@comcast.net
Web:home.comcast.net/~redcullen1

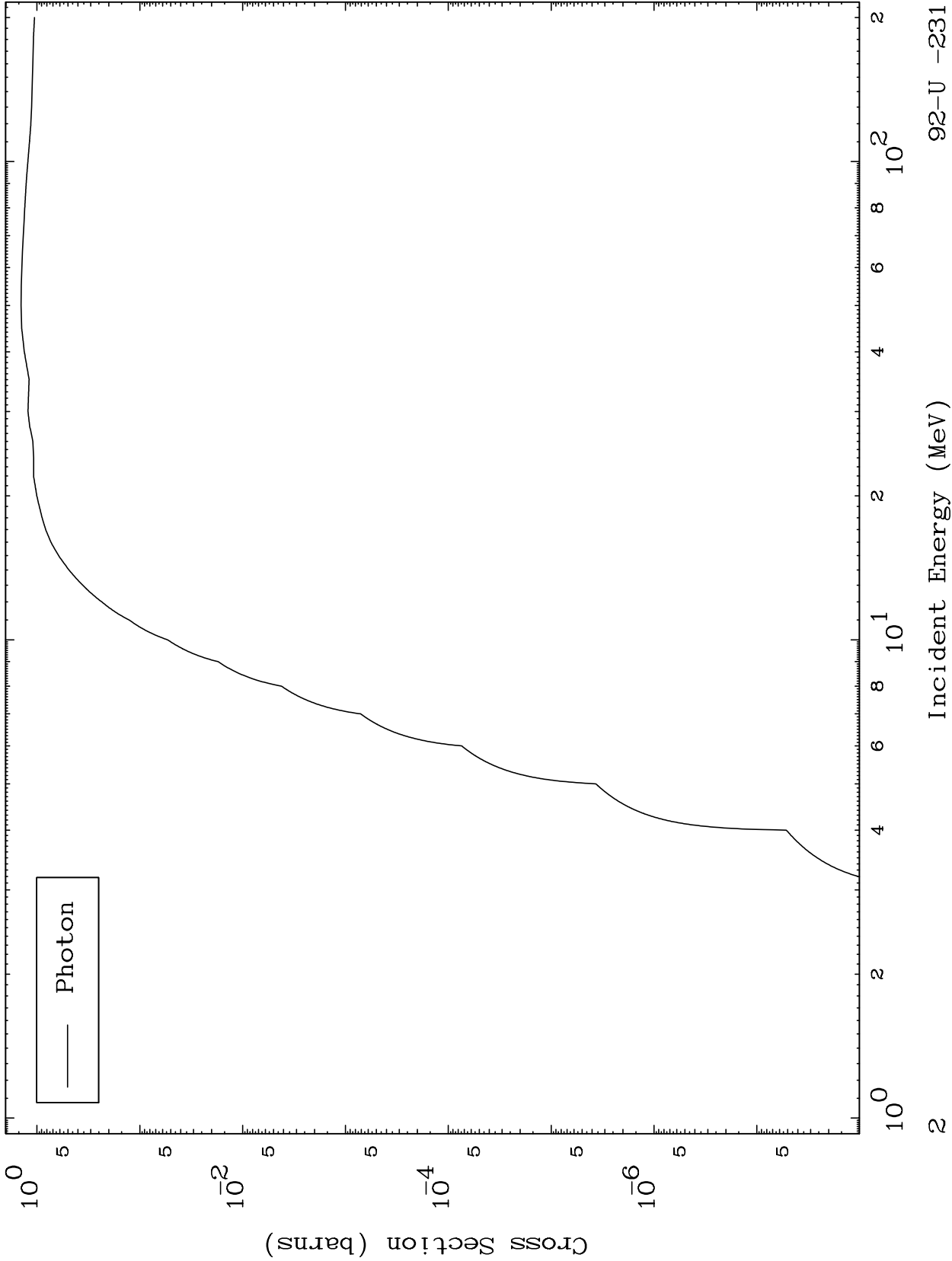
Press Mouse Button to Start



MAT 9216

92-U -231

Proton Fission
Radionuclide Production Cross Section



Photon

Incident Energy (MeV)

92-U -231