

Program EVALPLOT
(Version 2015-2)

by

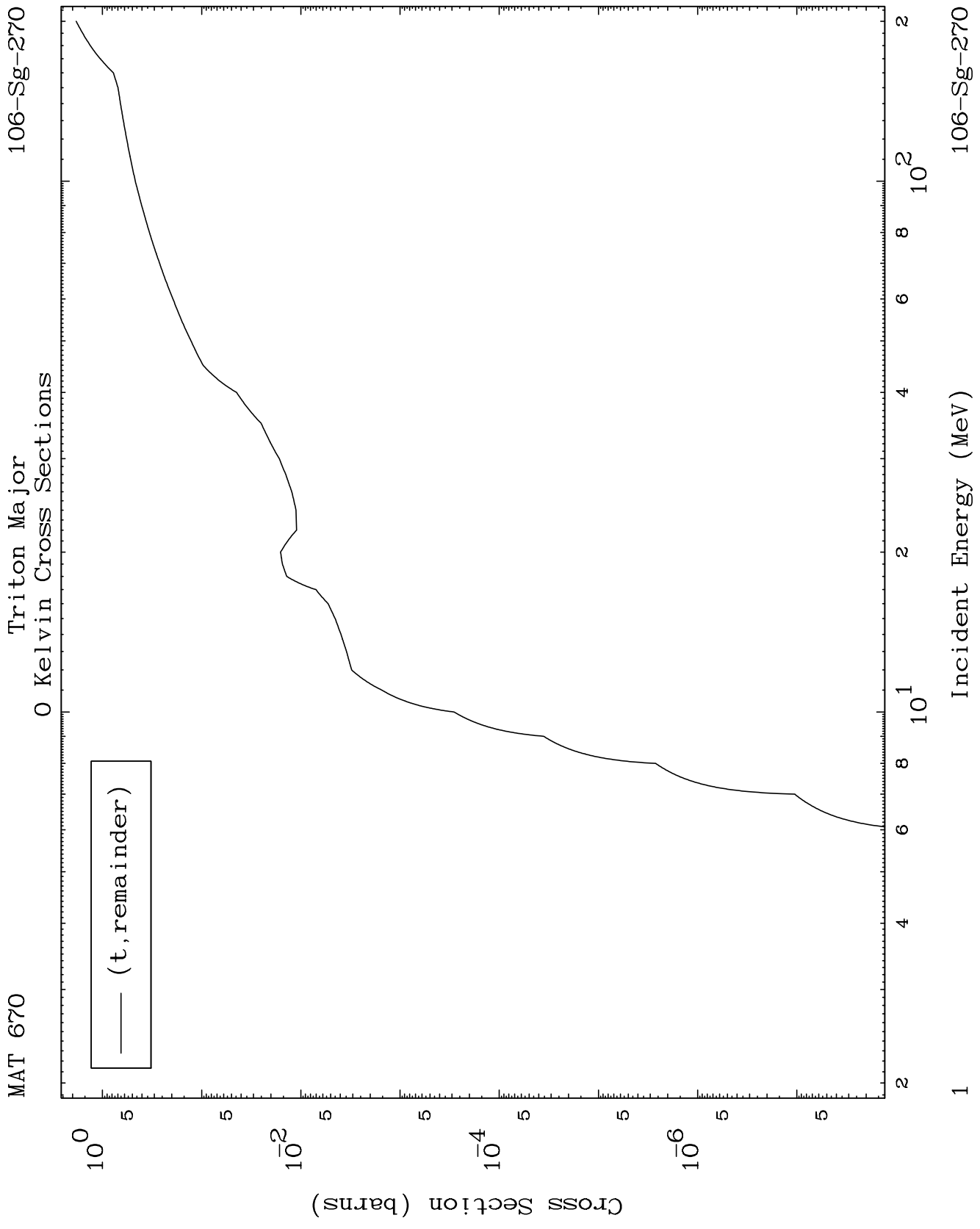
Dermott E. Cullen
(Present Contact Information)

Dermott E. Cullen
1466 Hudson Way
Livermore, CA 94550
U.S.A.

Tele: 925-443-1911

E.Mail:redcullen1@comcast.net
Web:home.comcast.net/~redcullen1

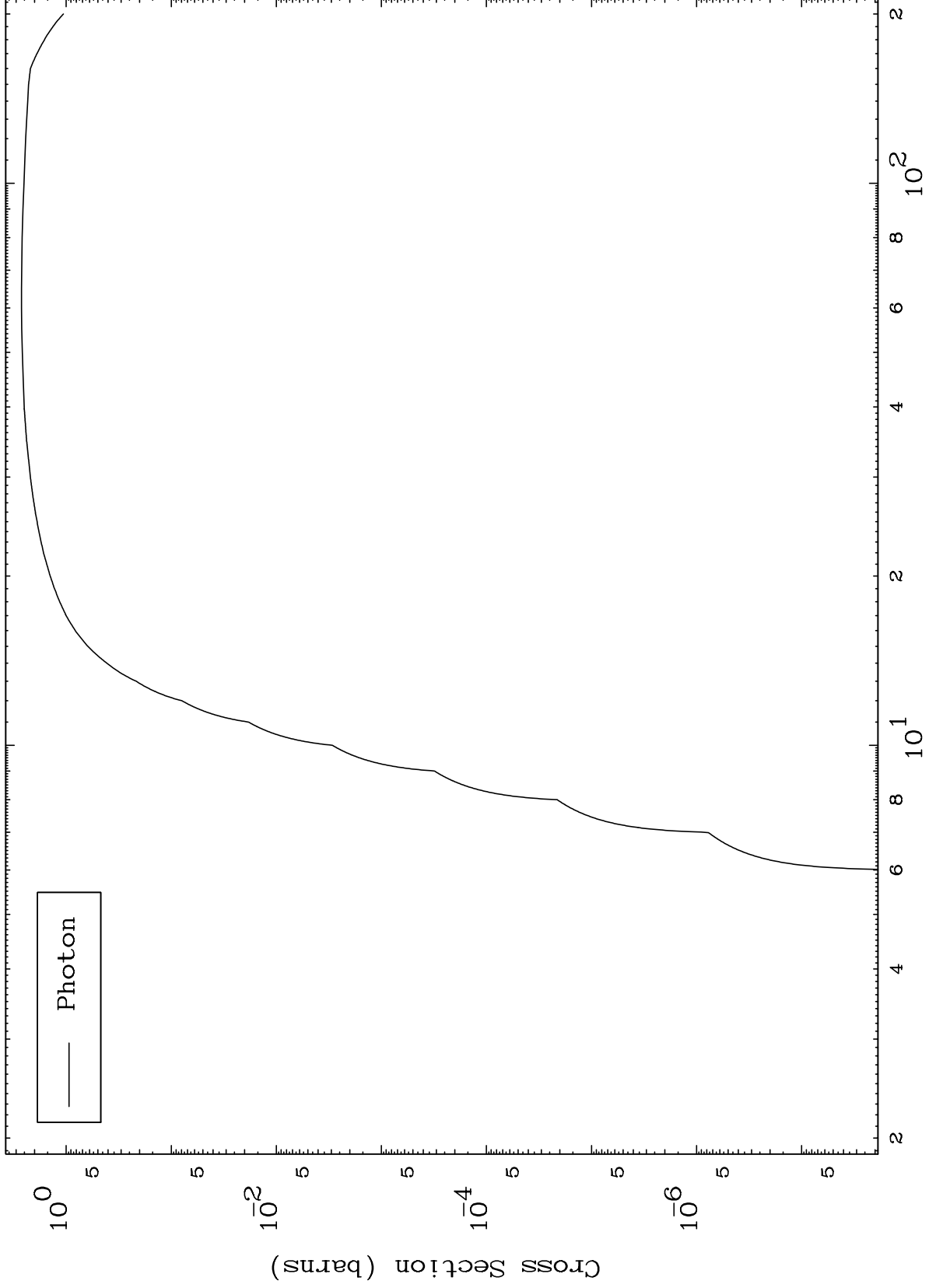
Press Mouse Button to Start



MAT 670

Triton Fission
Radionuclide Production Cross Section

106-Sg-270



2

Incident Energy (MeV)

106-Sg-270