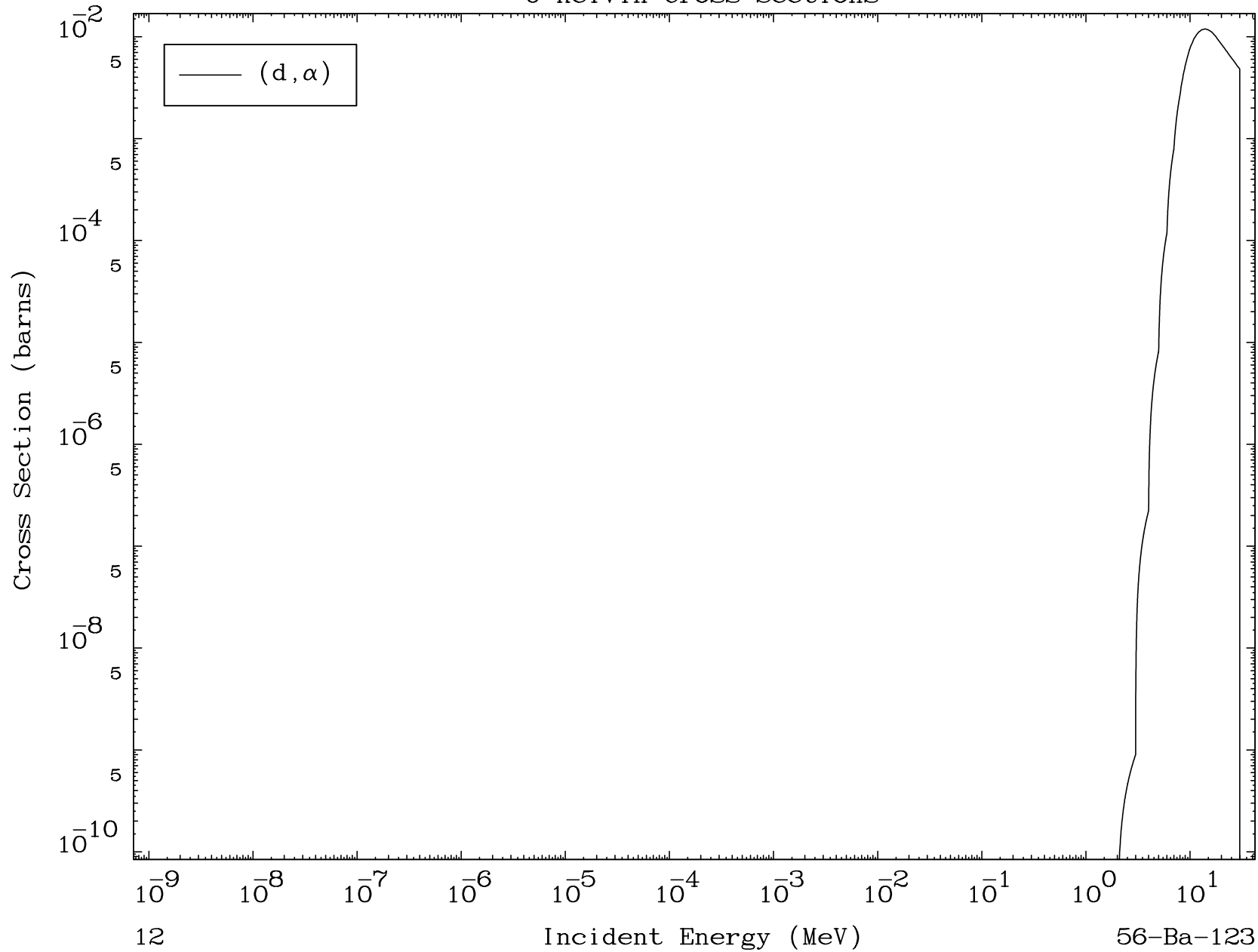


MAT 5604

(d, α) Levels
0 Kelvin Cross Sections

56-Ba-123



12

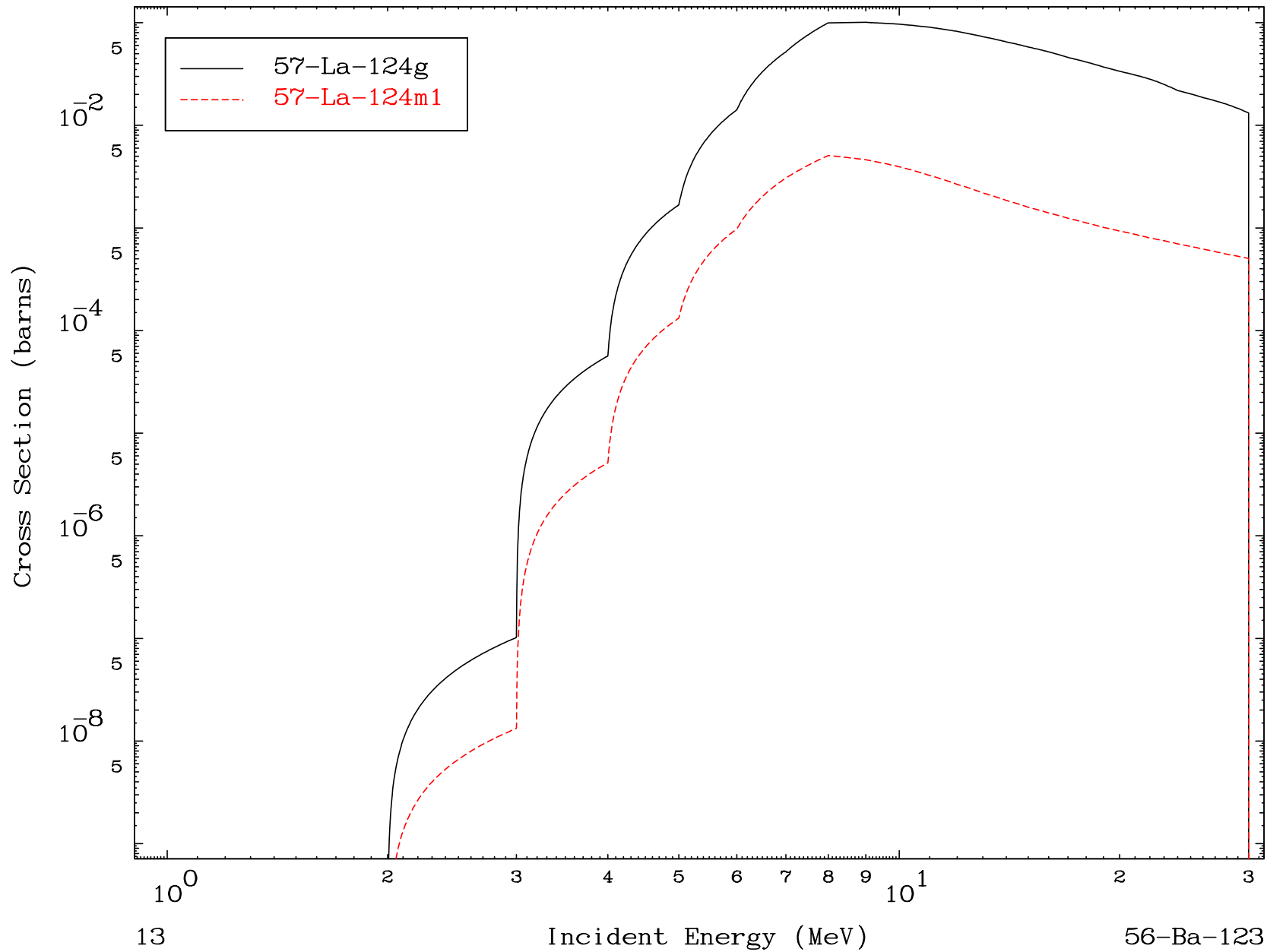
Incident Energy (MeV)

56-Ba-123

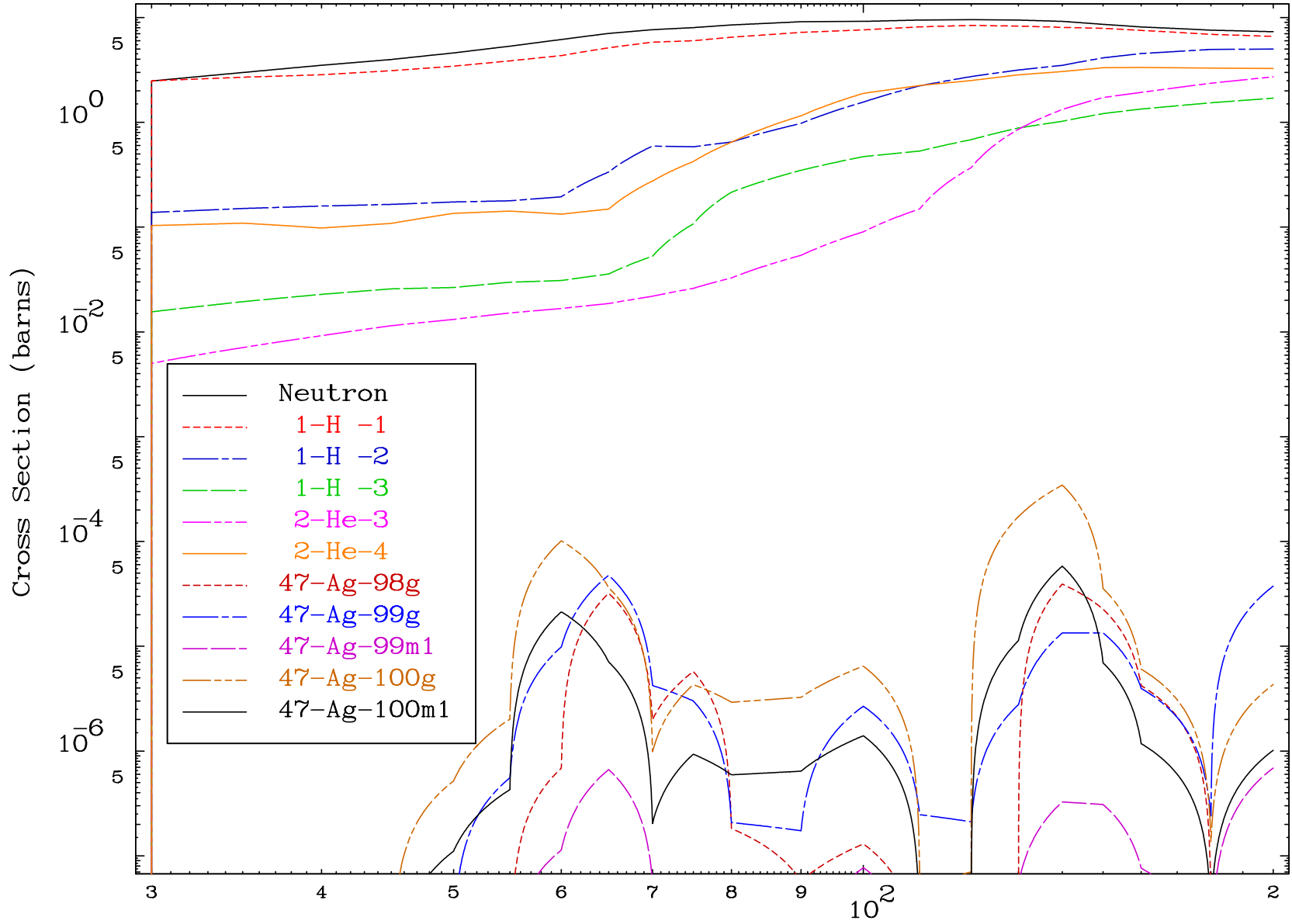
MAT 5604

Deuteron Inelastic
Radionuclide Production Cross Section

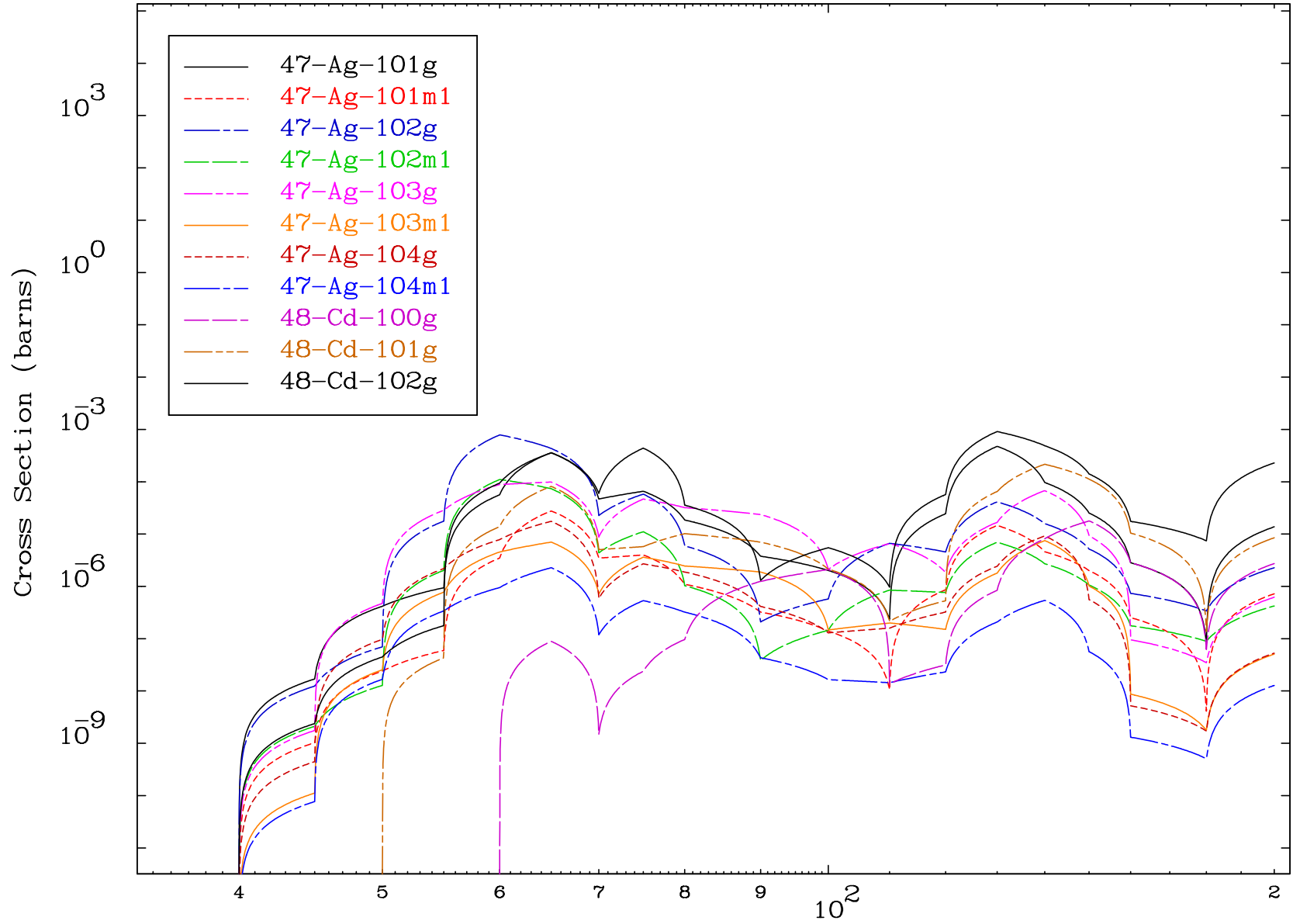
56-Ba-123



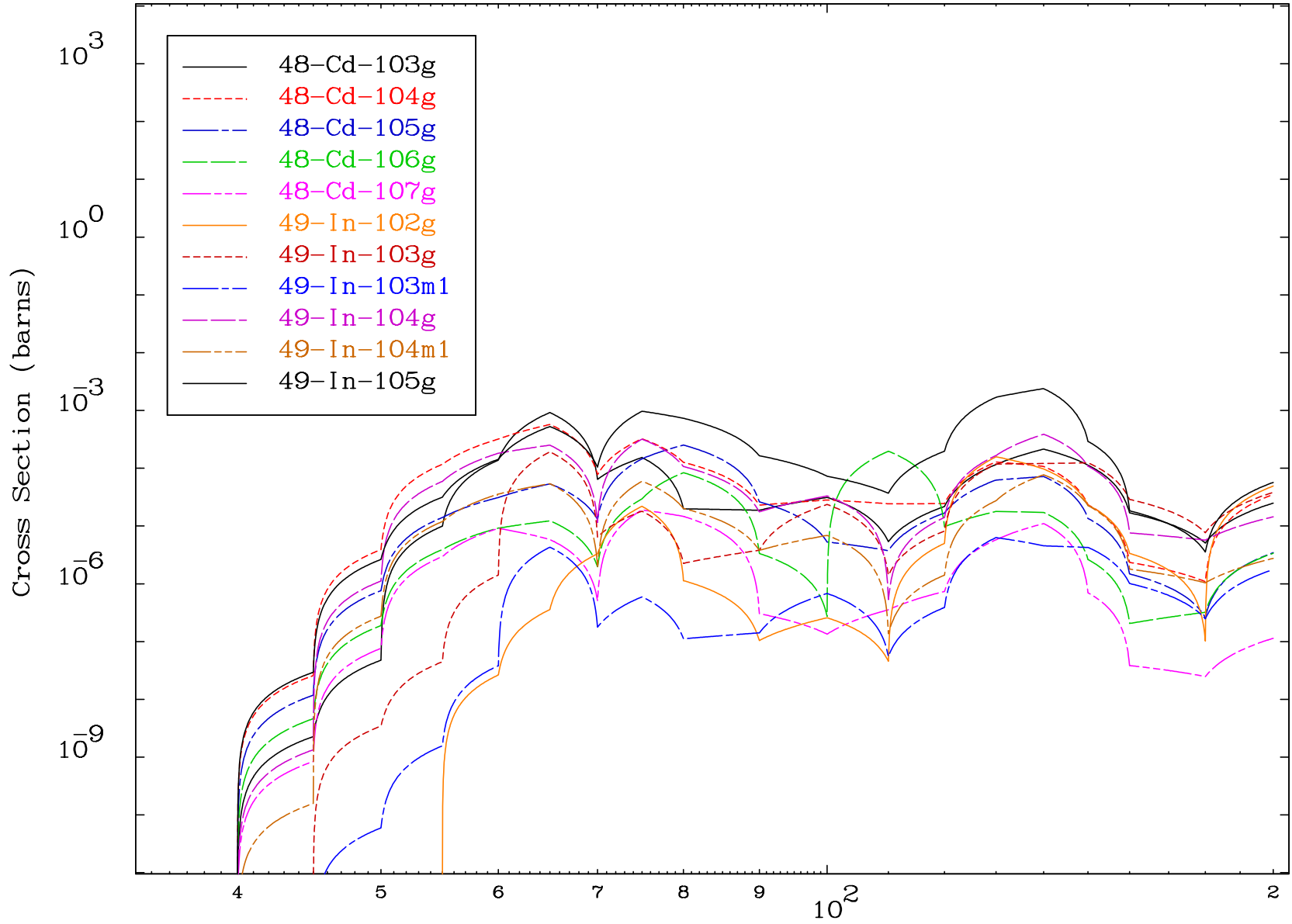
Radionuclide Production Cross Section



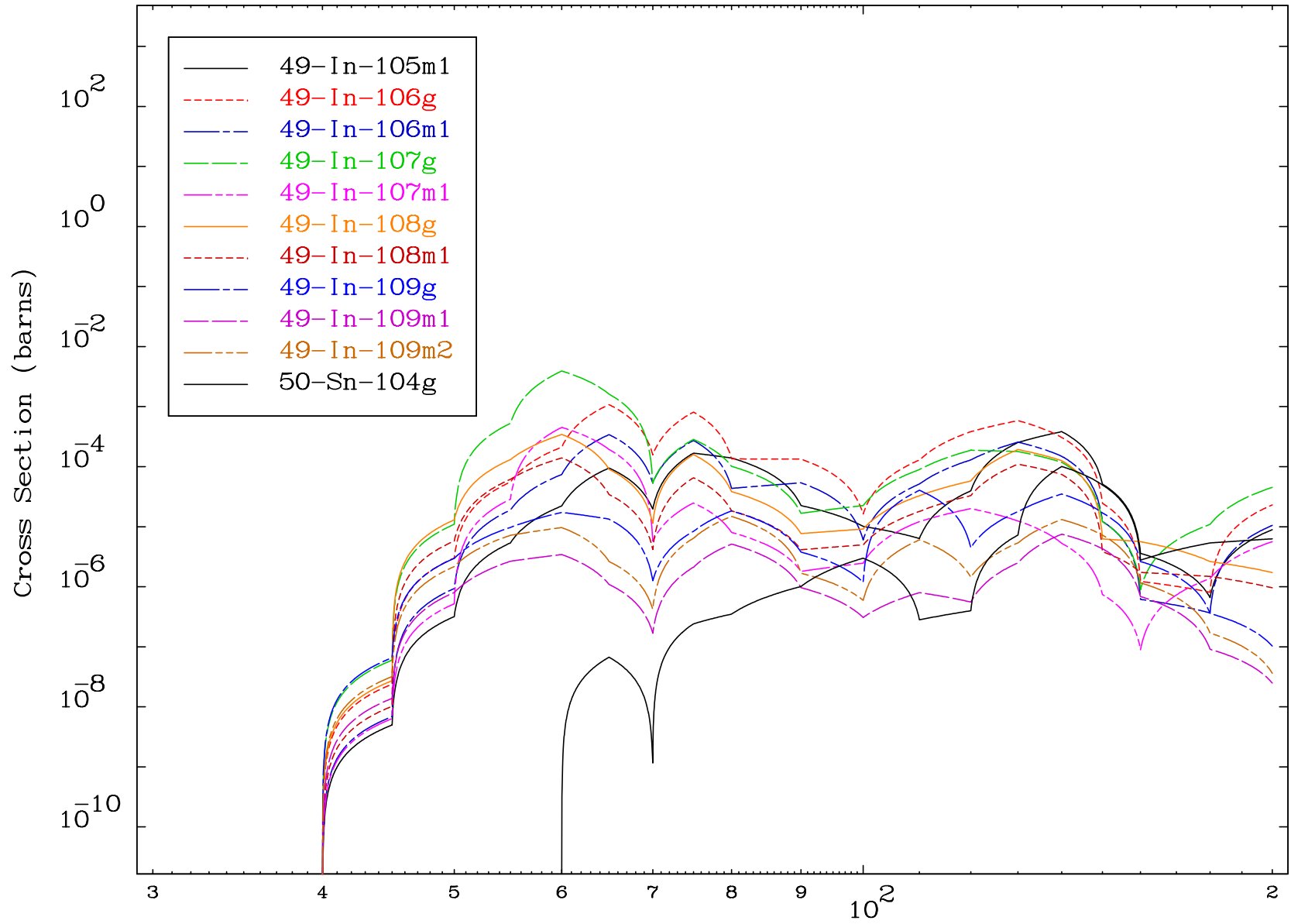
Radionuclide Production Cross Section



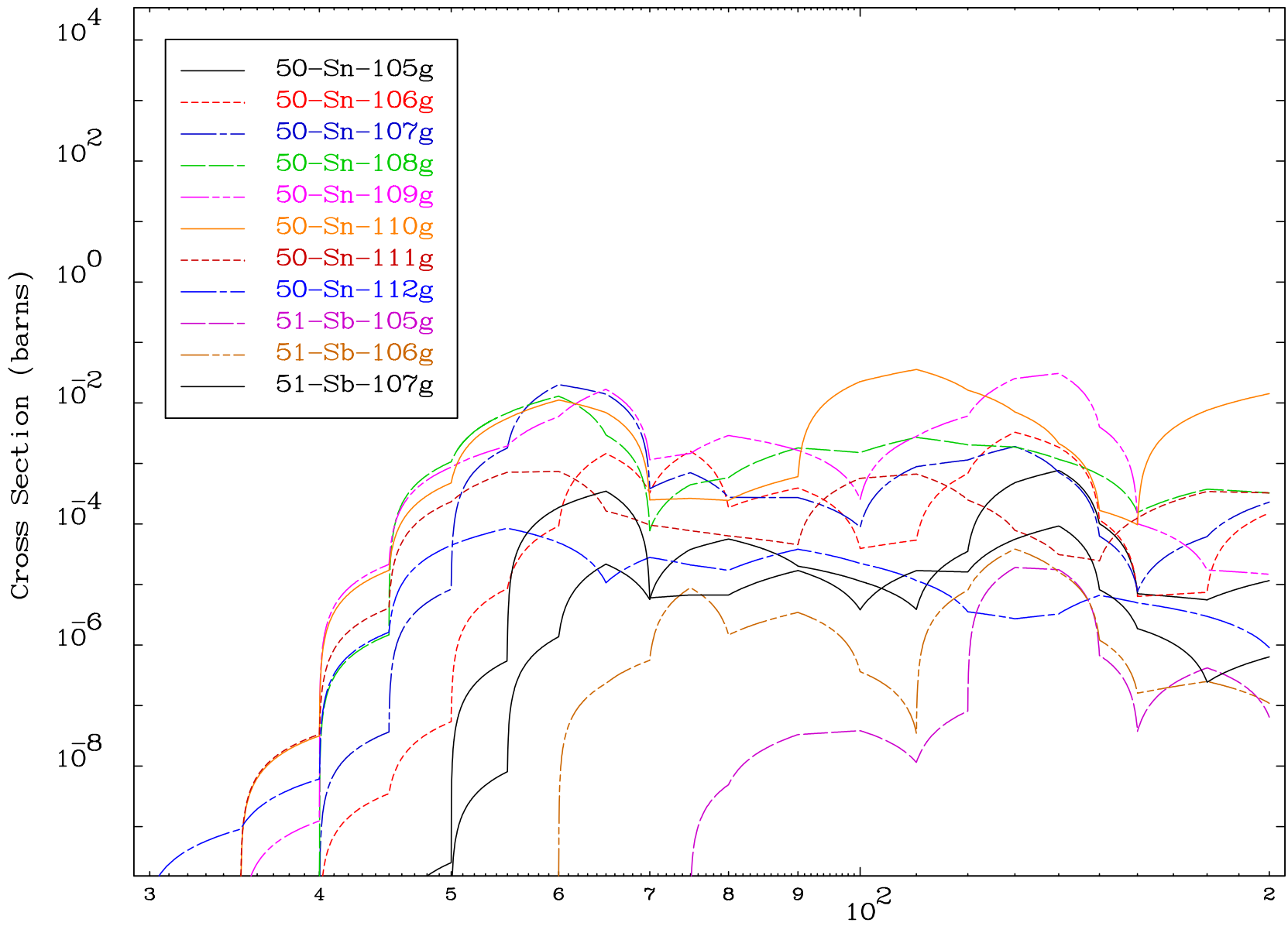
Radionuclide Production Cross Section



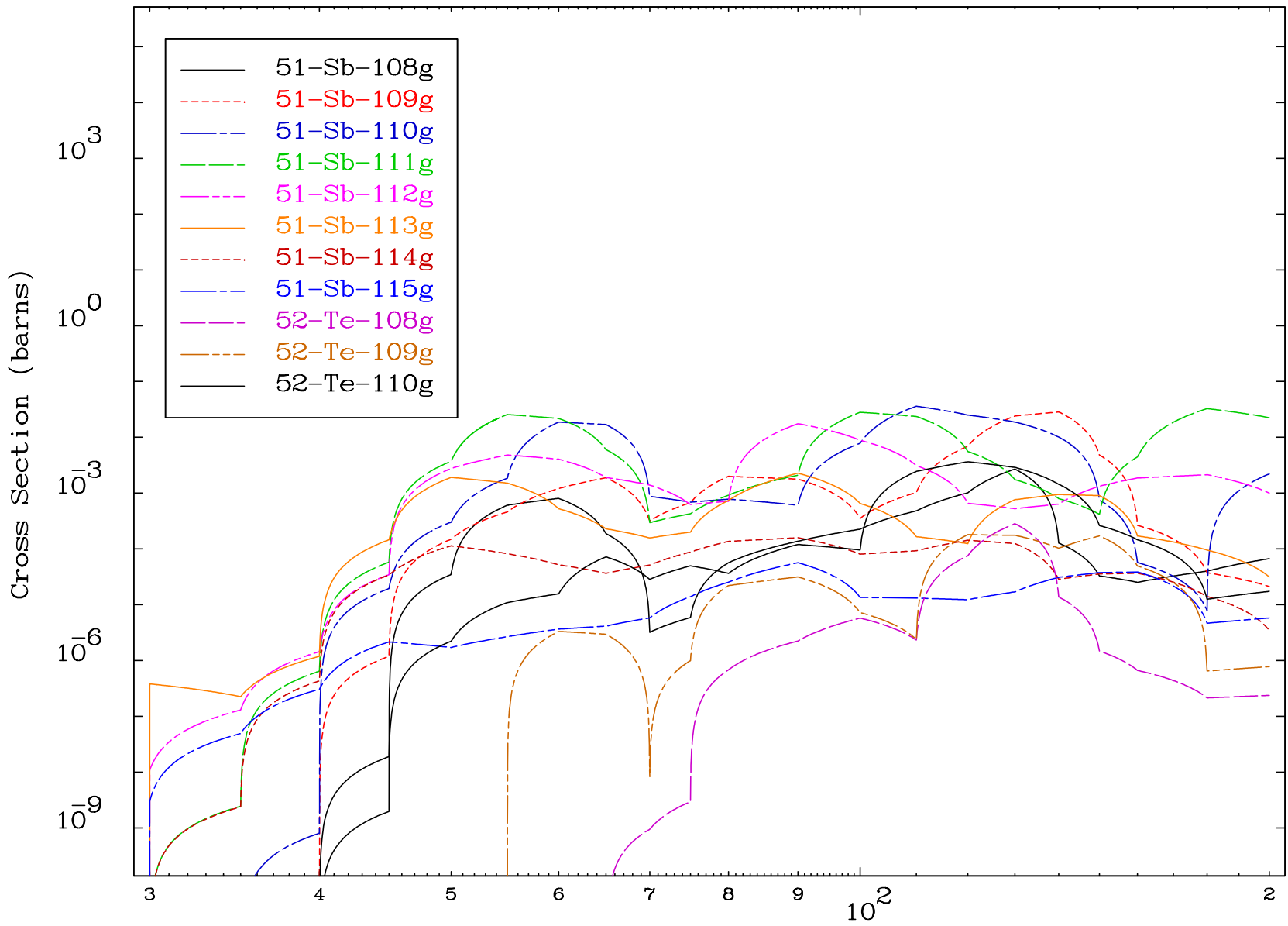
Radionuclide Production Cross Section



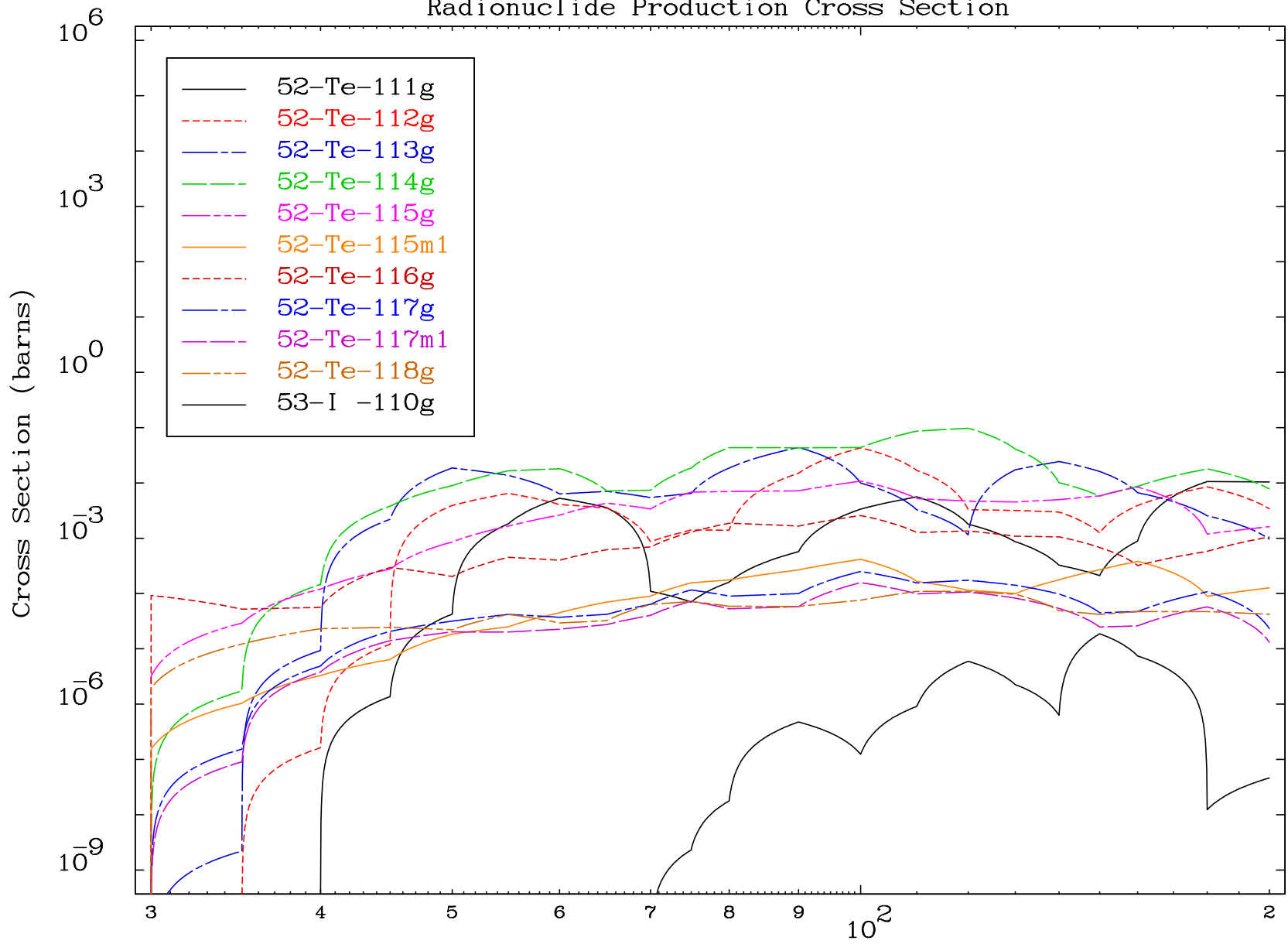
Radionuclide Production Cross Section



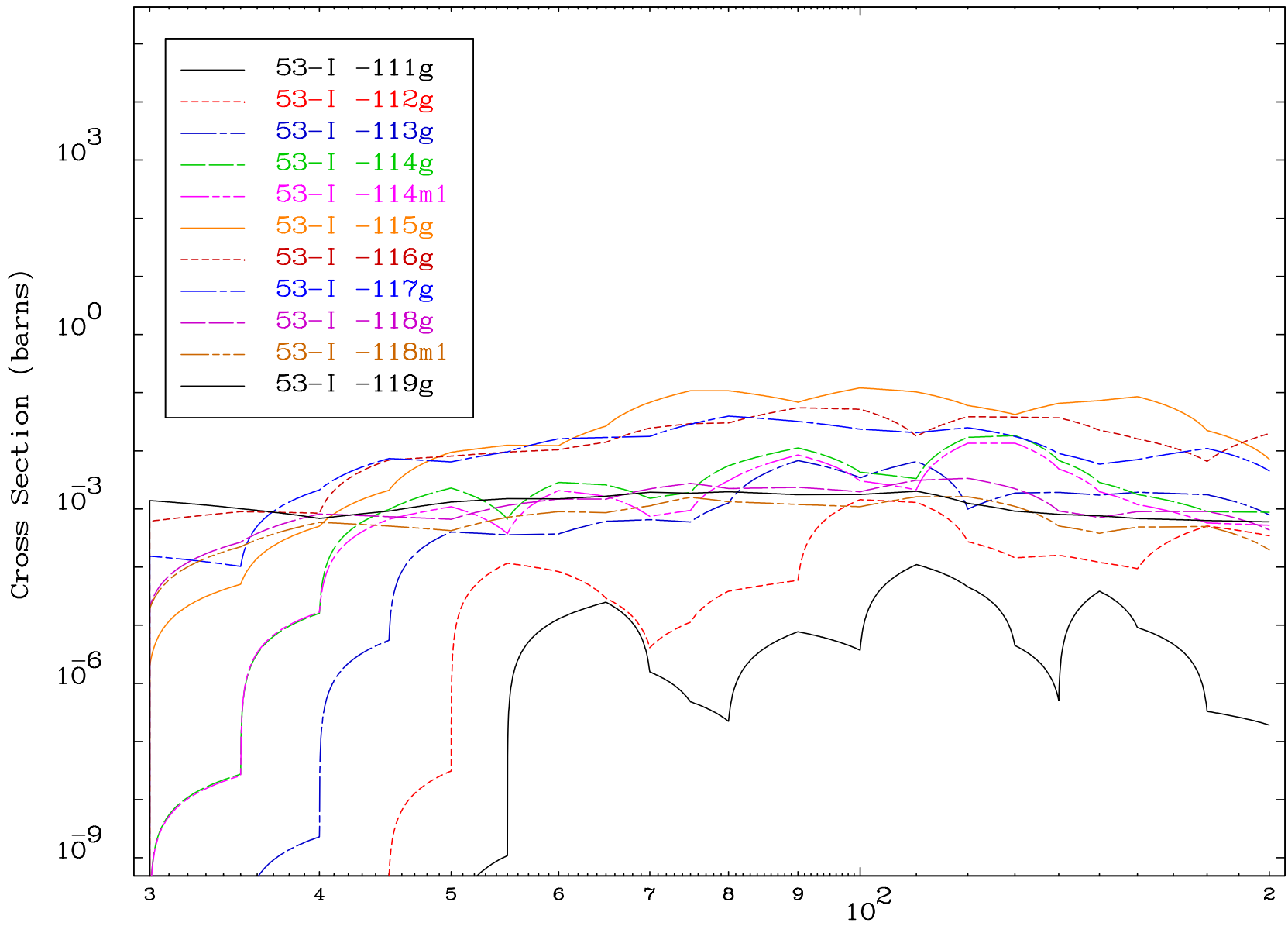
Radionuclide Production Cross Section

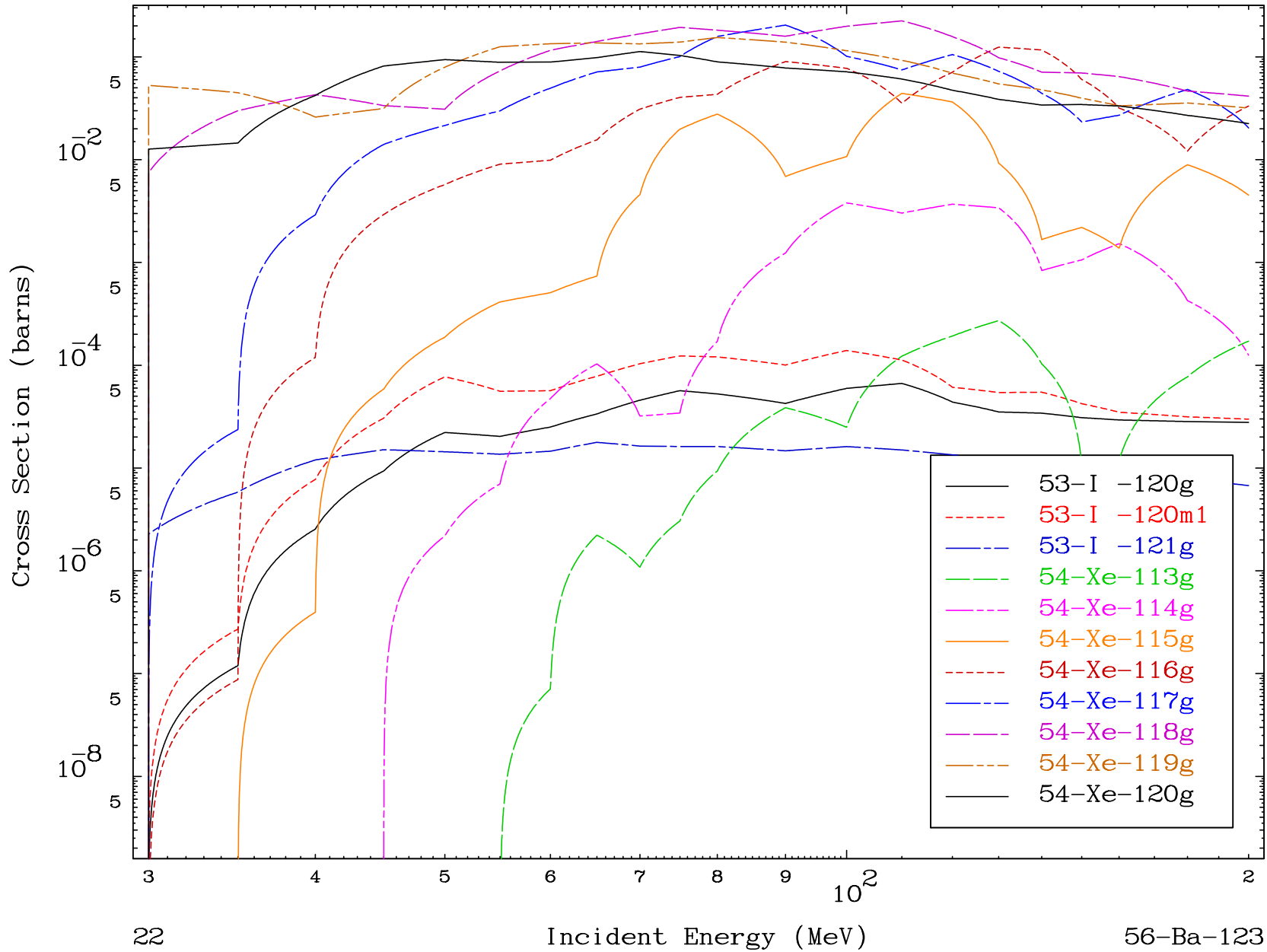


Radionuclide Production Cross Section

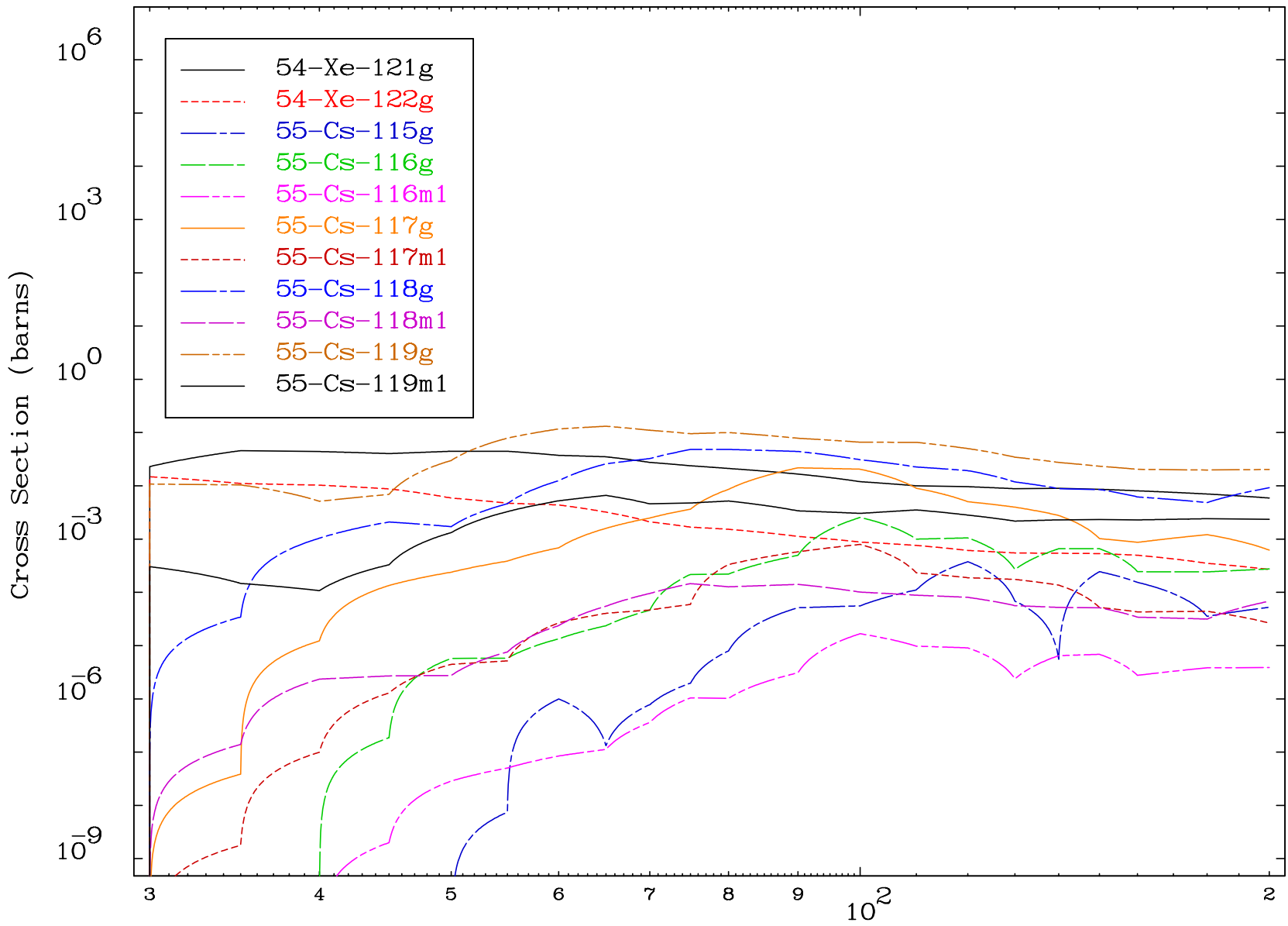


Radionuclide Production Cross Section

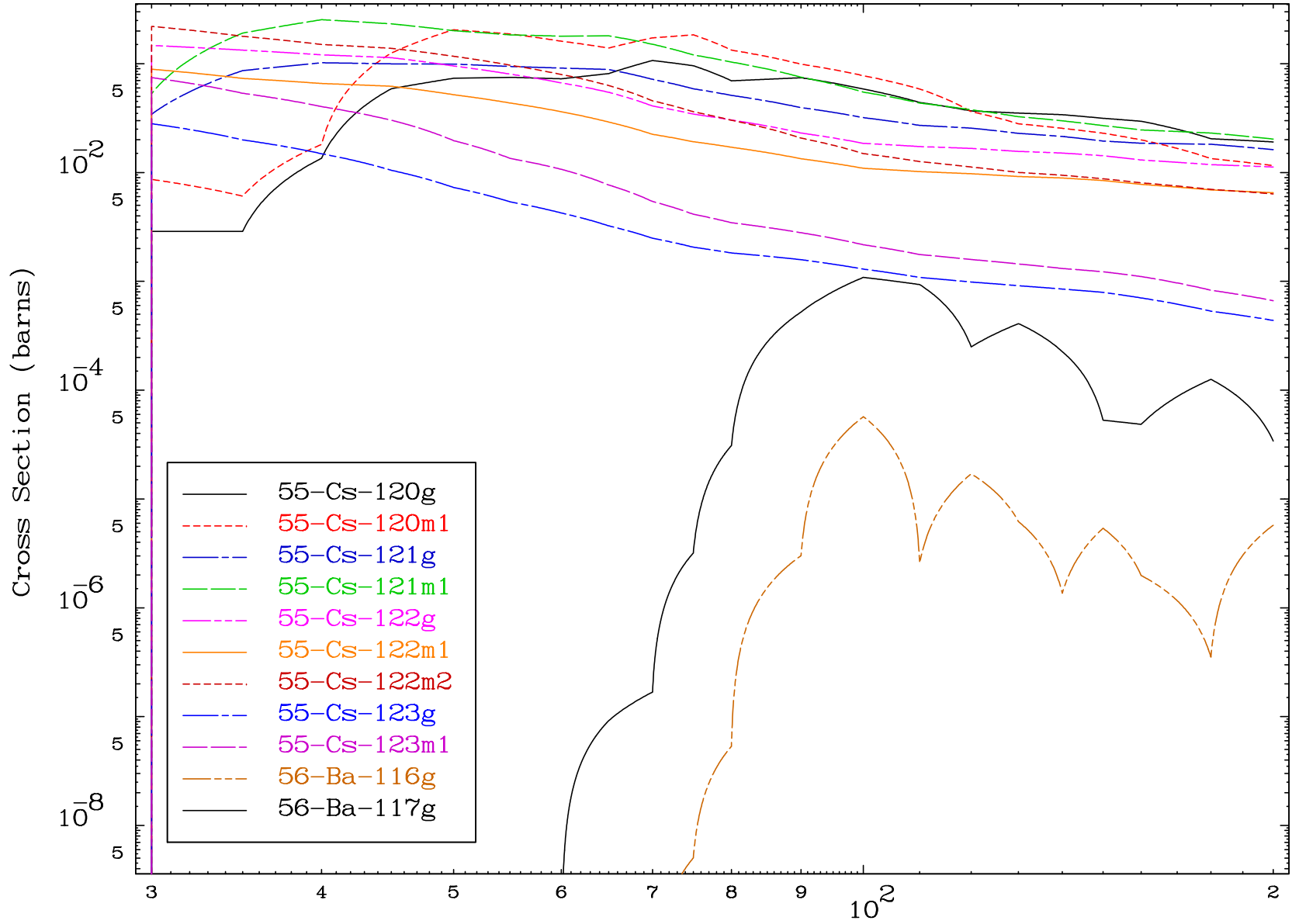




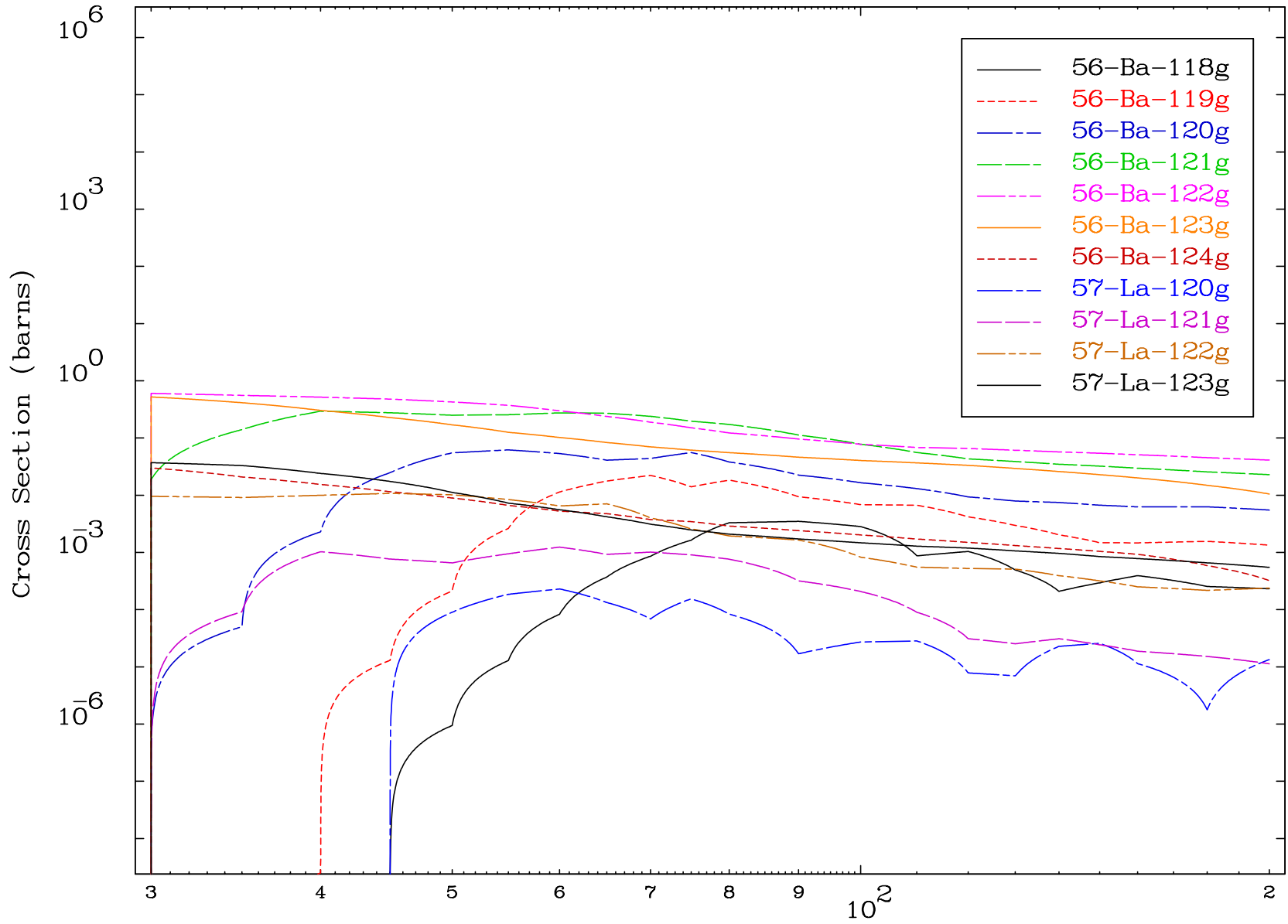
Radionuclide Production Cross Section



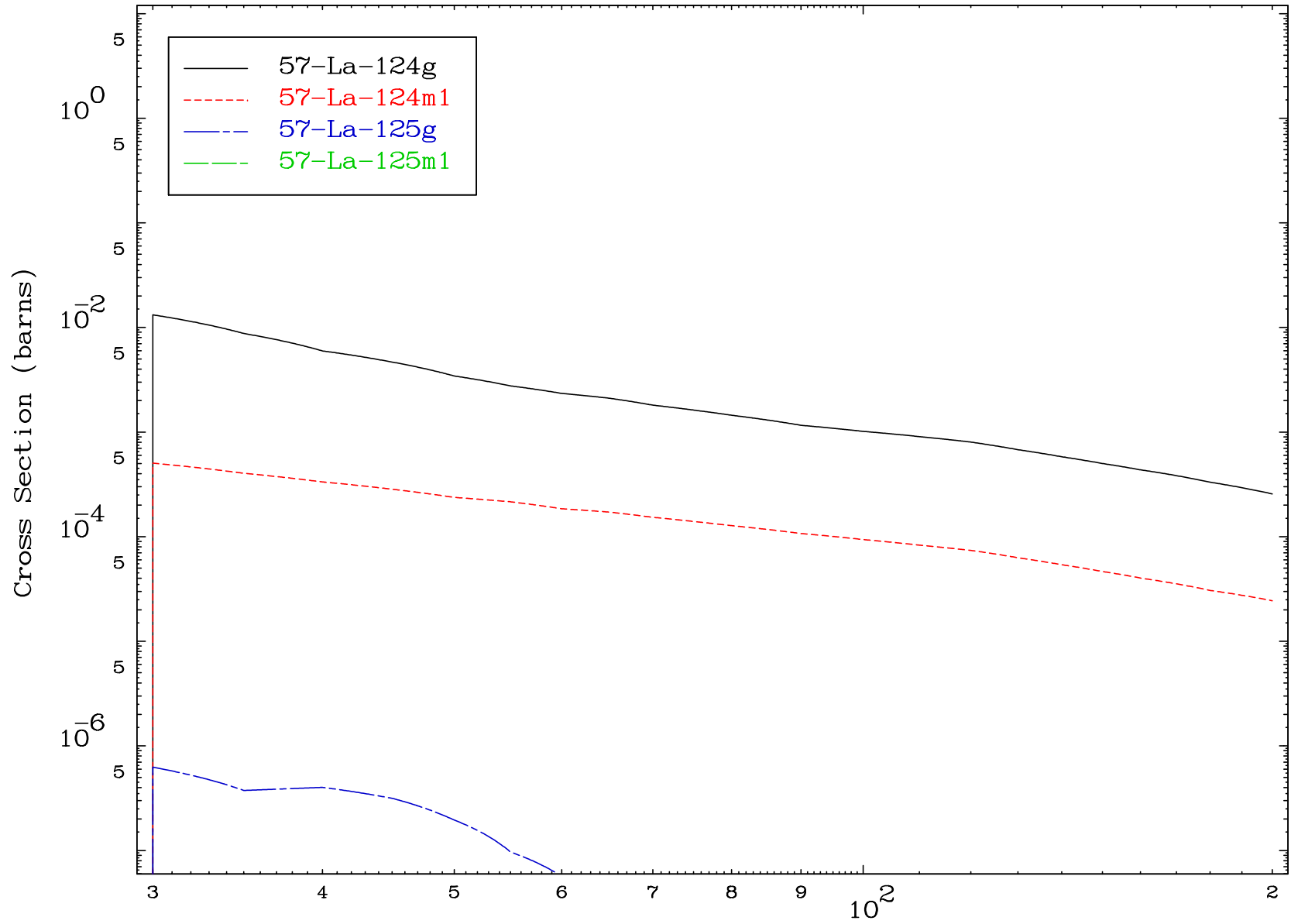
Radionuclide Production Cross Section



Radionuclide Production Cross Section



Radionuclide Production Cross Section

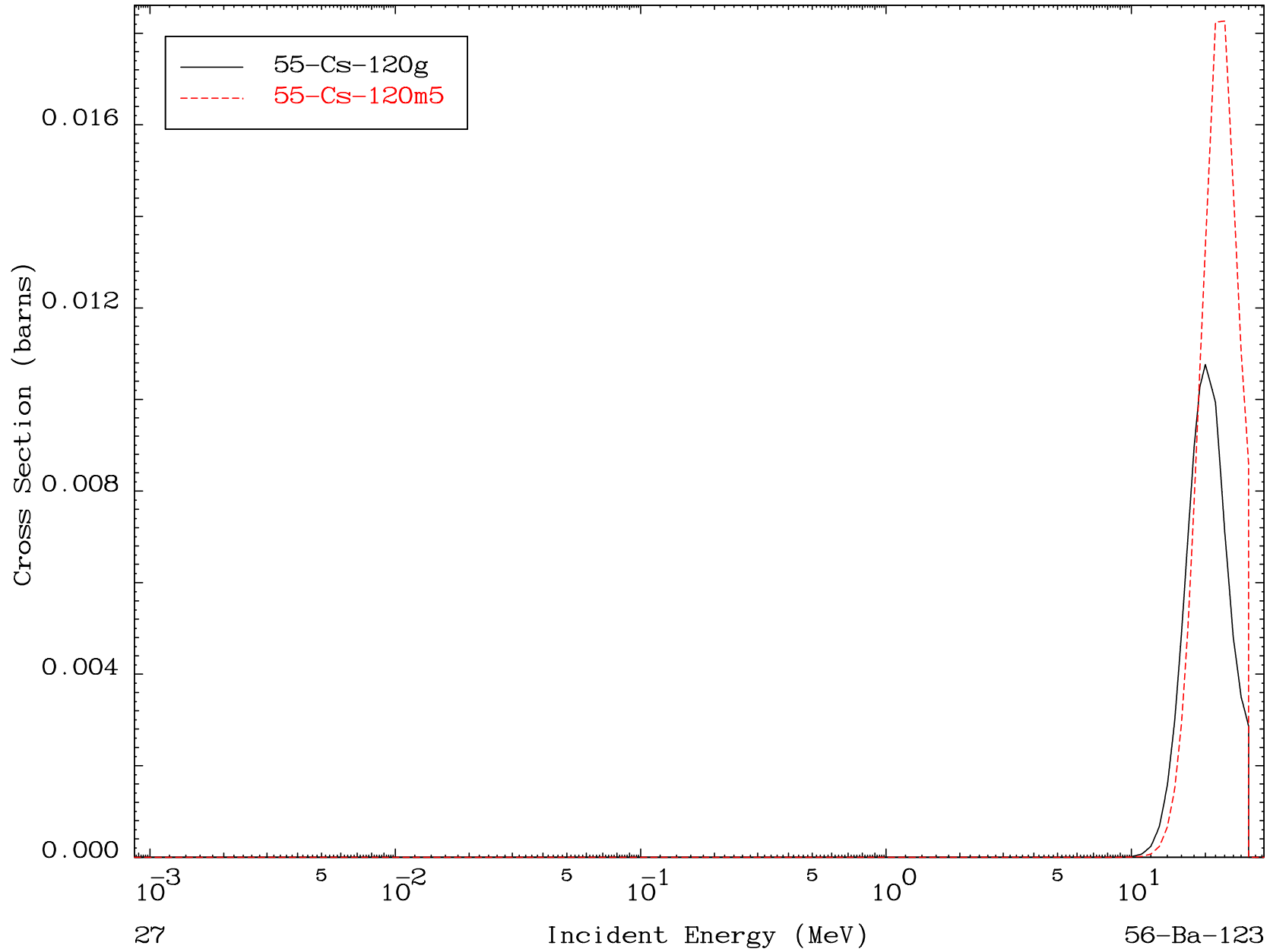


MAT 5604

(d,n') α

56-Ba-123

Radionuclide Production Cross Section

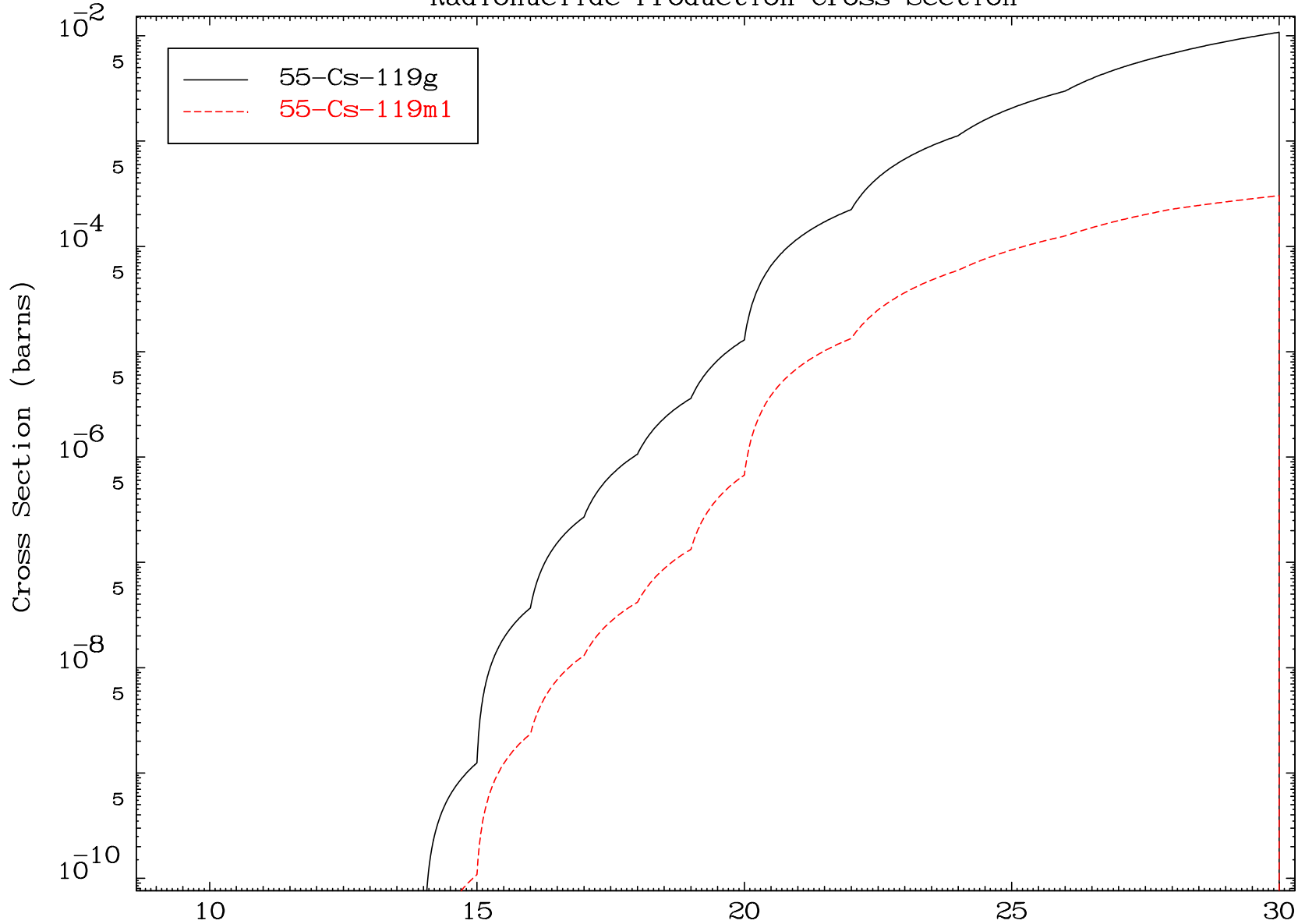


MAT 5604

(d,2n) α

56-Ba-123

Radionuclide Production Cross Section



28

Incident Energy (MeV)

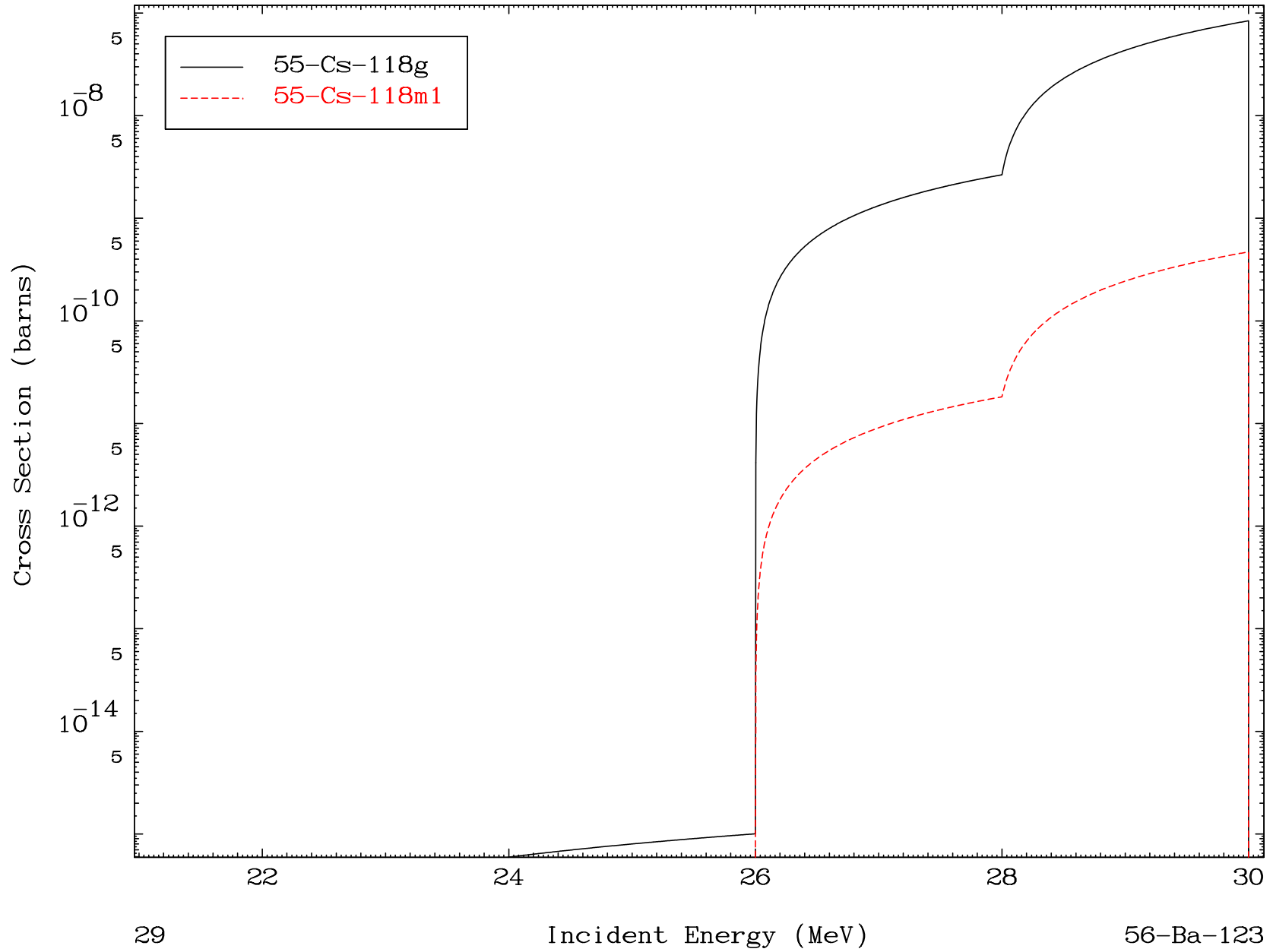
56-Ba-123

MAT 5604

(d,3n) α

56-Ba-123

Radionuclide Production Cross Section

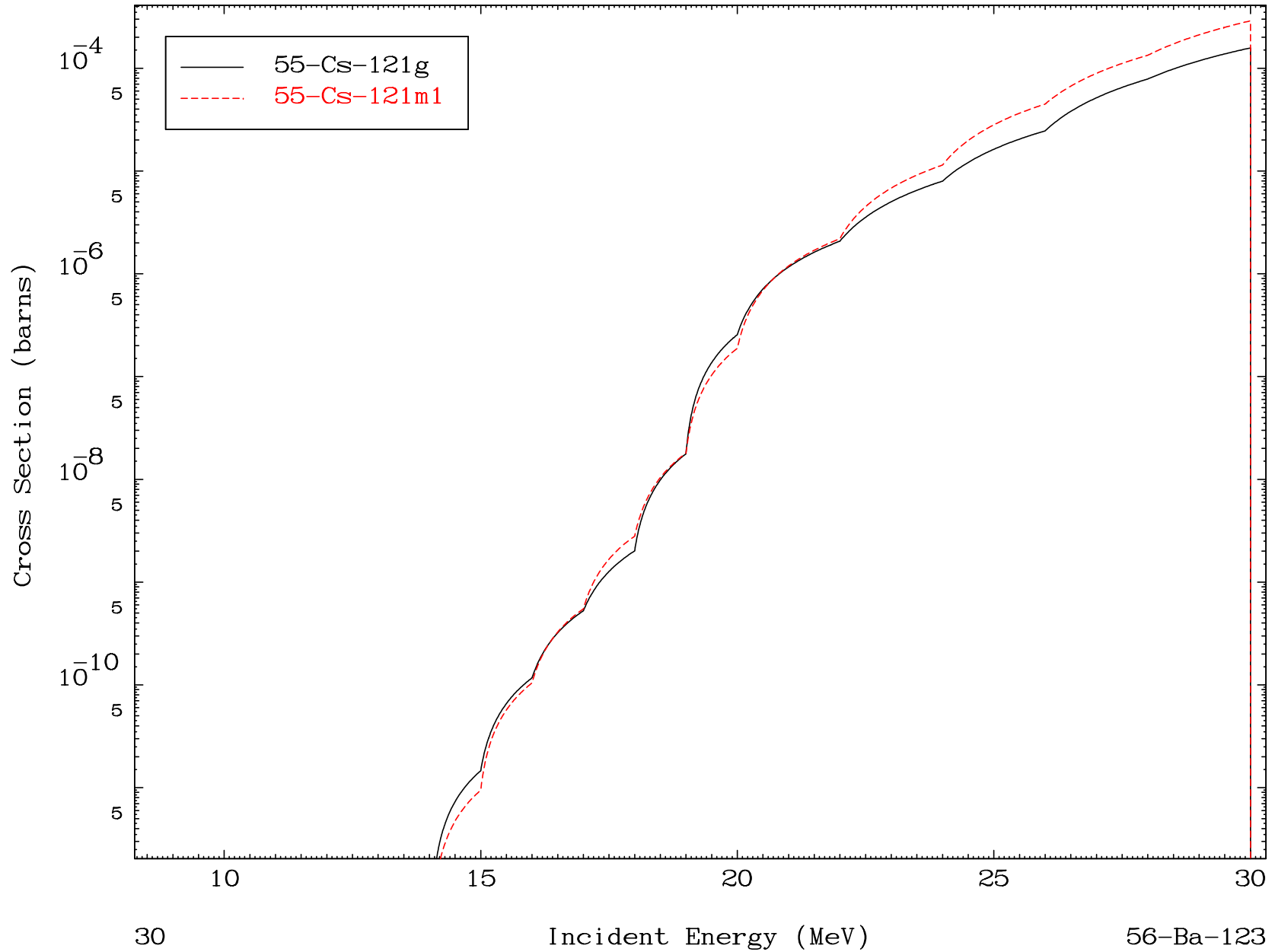


MAT 5604

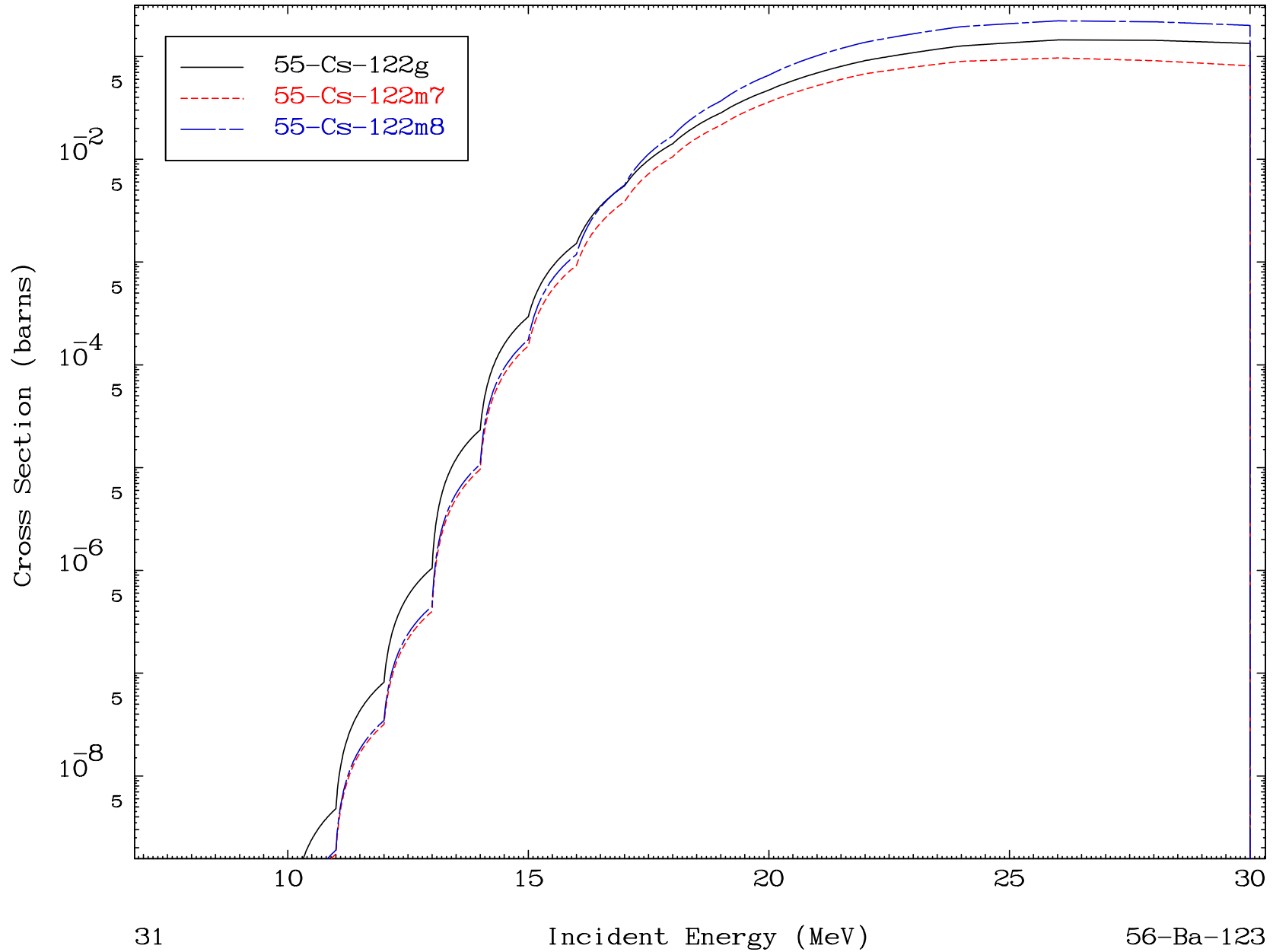
(d,n') He-3

56-Ba-123

Radionuclide Production Cross Section



Radionuclide Production Cross Section

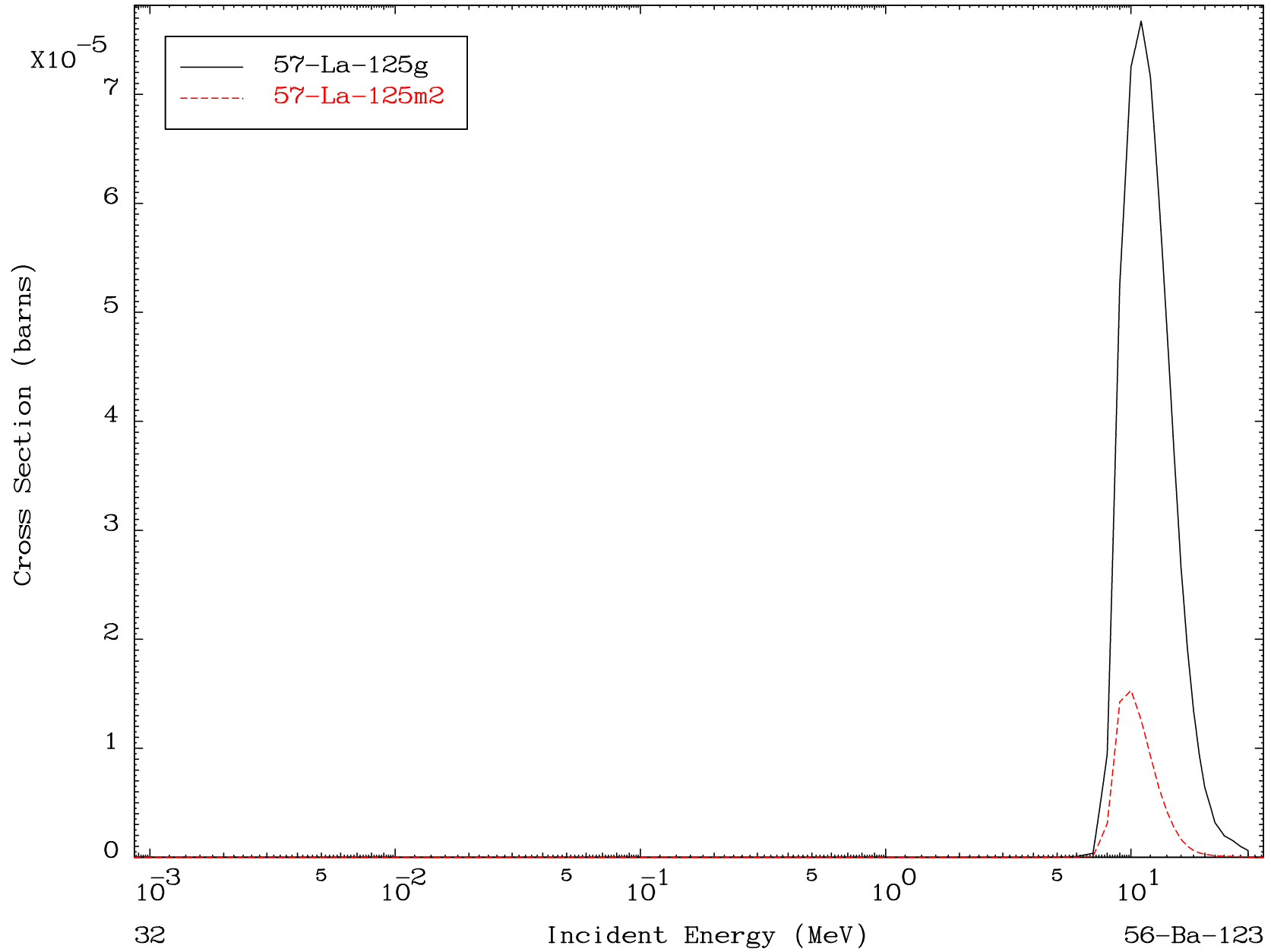


MAT 5604

(d, γ)

56-Ba-123

Radionuclide Production Cross Section

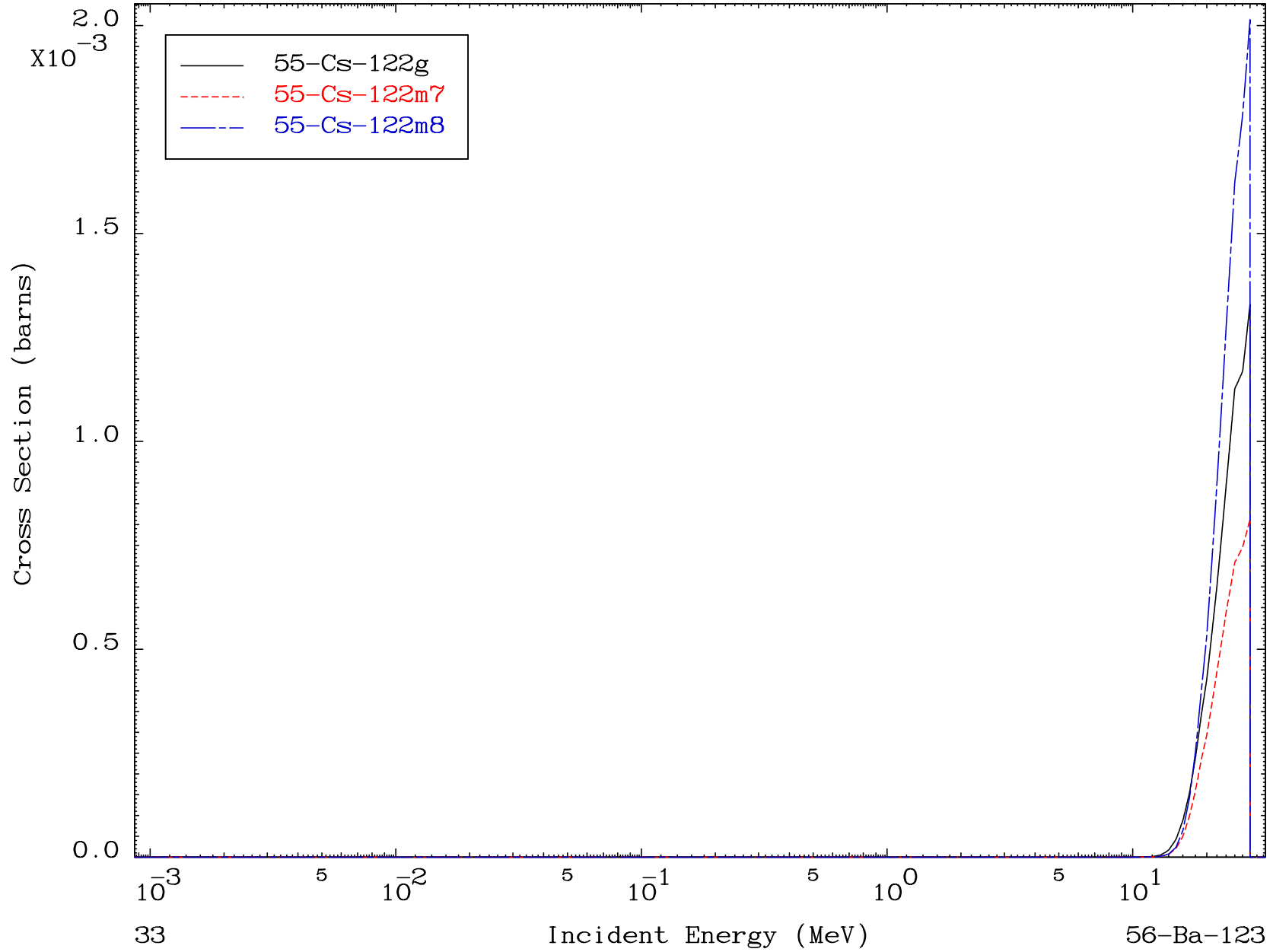


MAT 5604

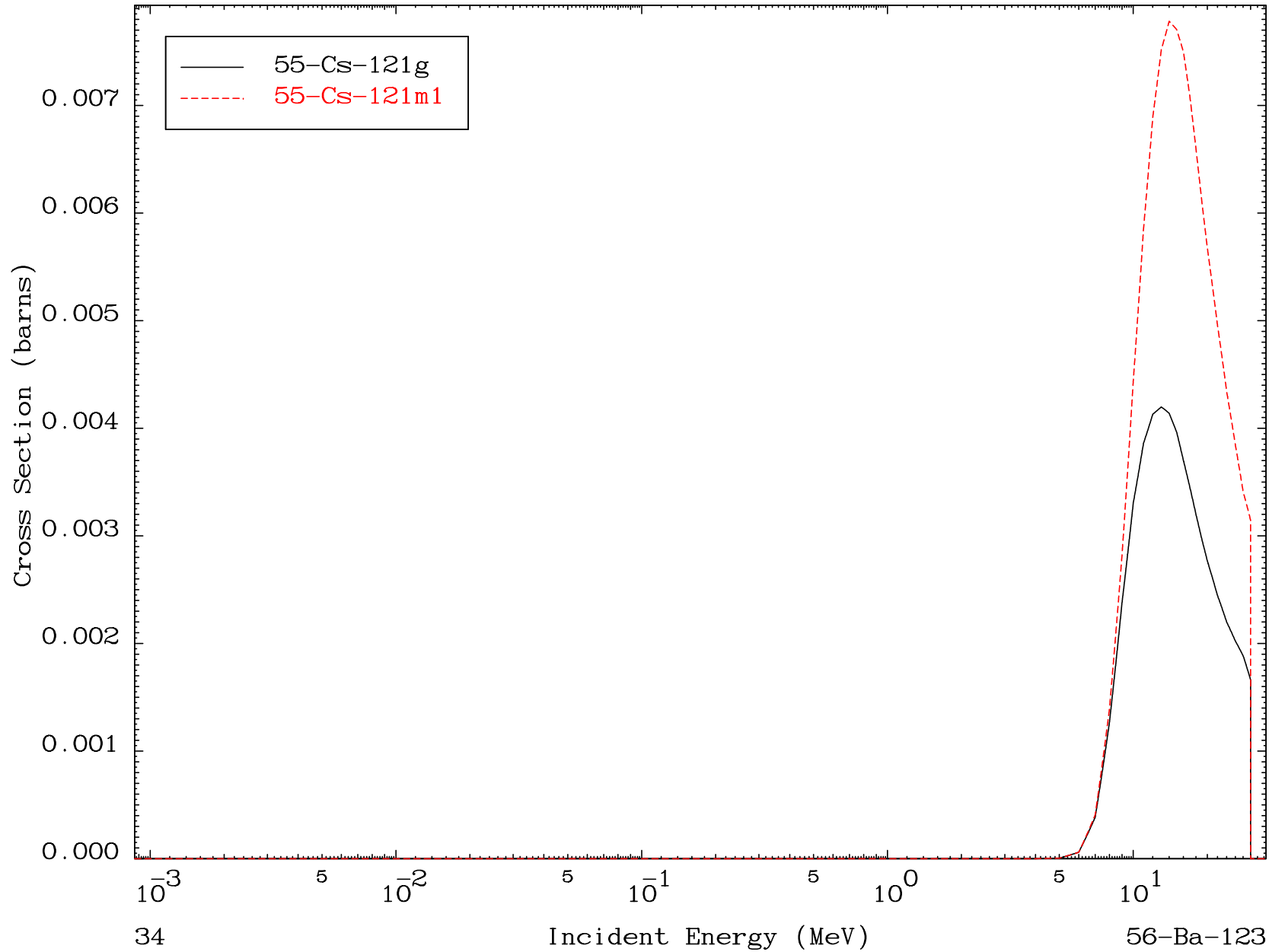
(d,He-3)

56-Ba-123

Radionuclide Production Cross Section



Radionuclide Production Cross Section

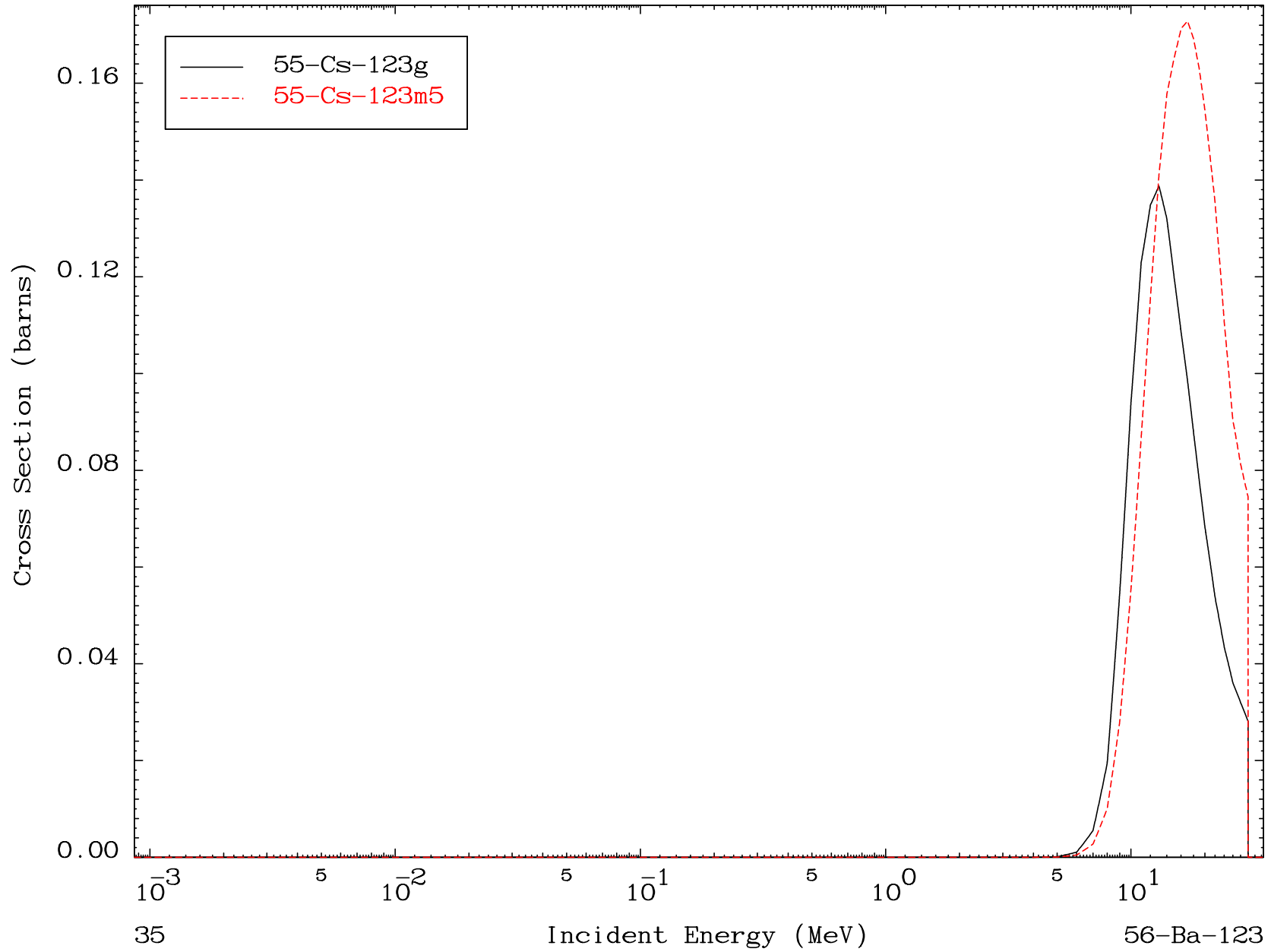


MAT 5604

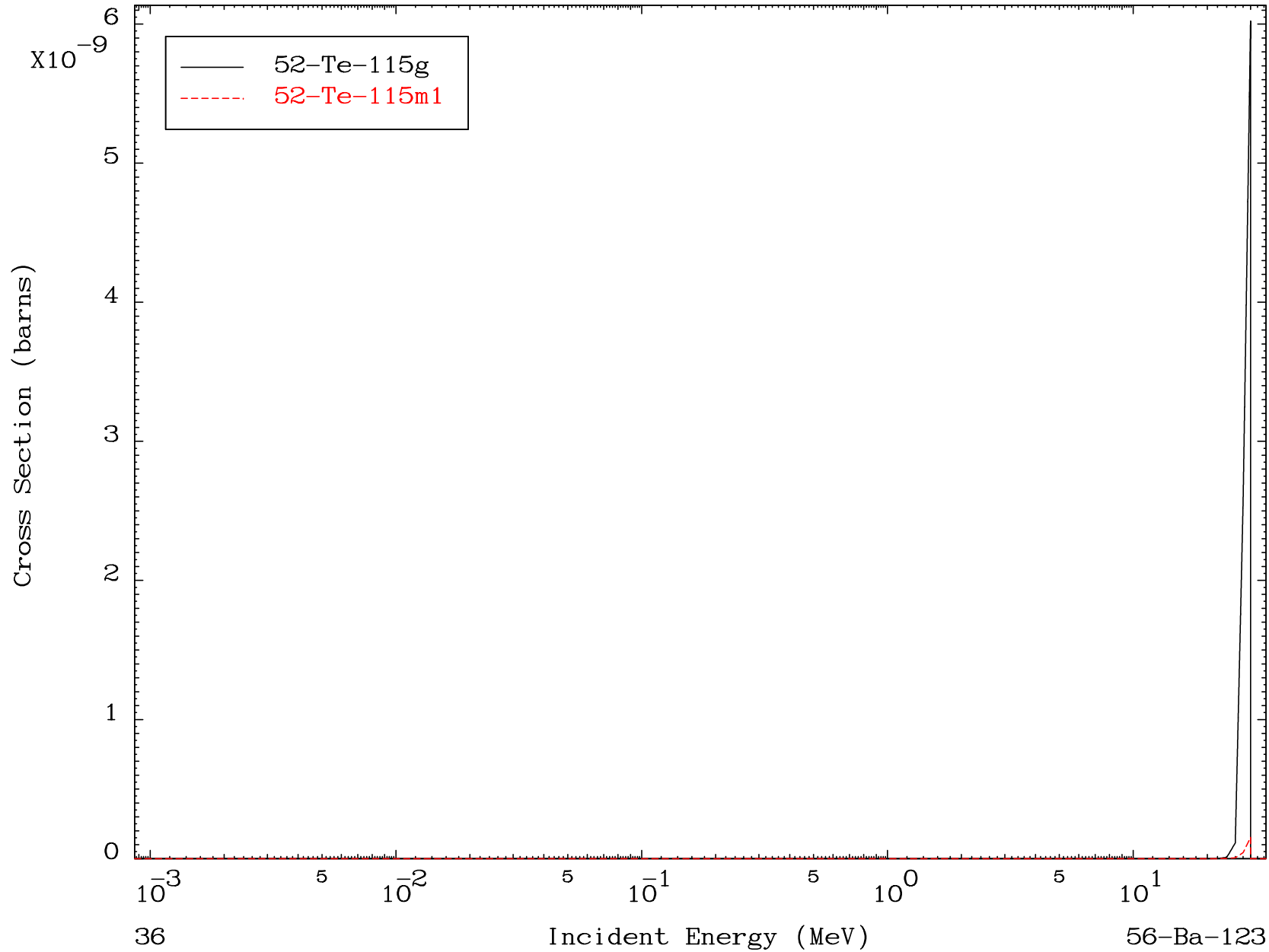
(d,2p)

56-Ba-123

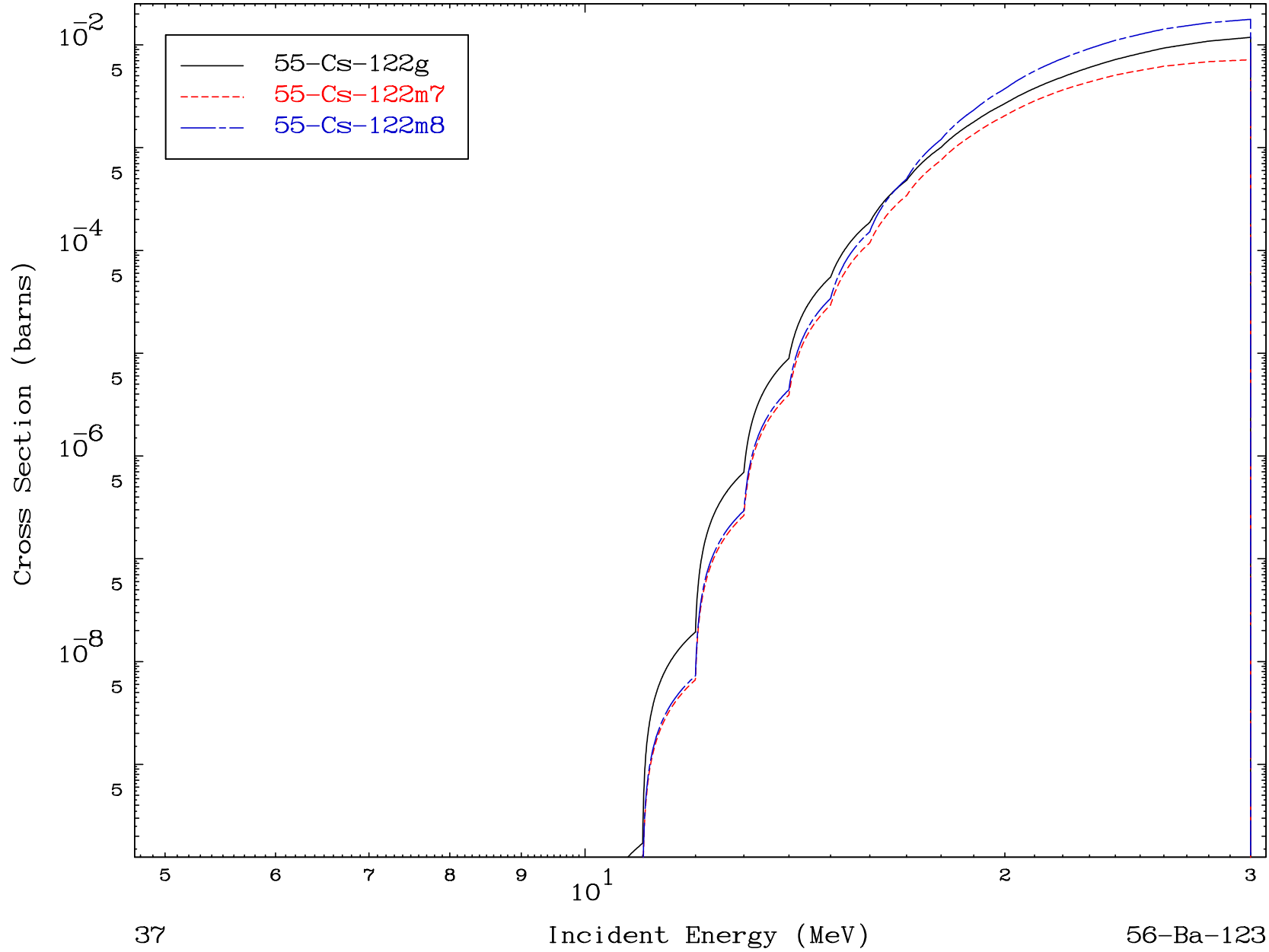
Radionuclide Production Cross Section



Radionuclide Production Cross Section



Radionuclide Production Cross Section



MAT 5604

(d,p) t

56-Ba-123

Radionuclide Production Cross Section

