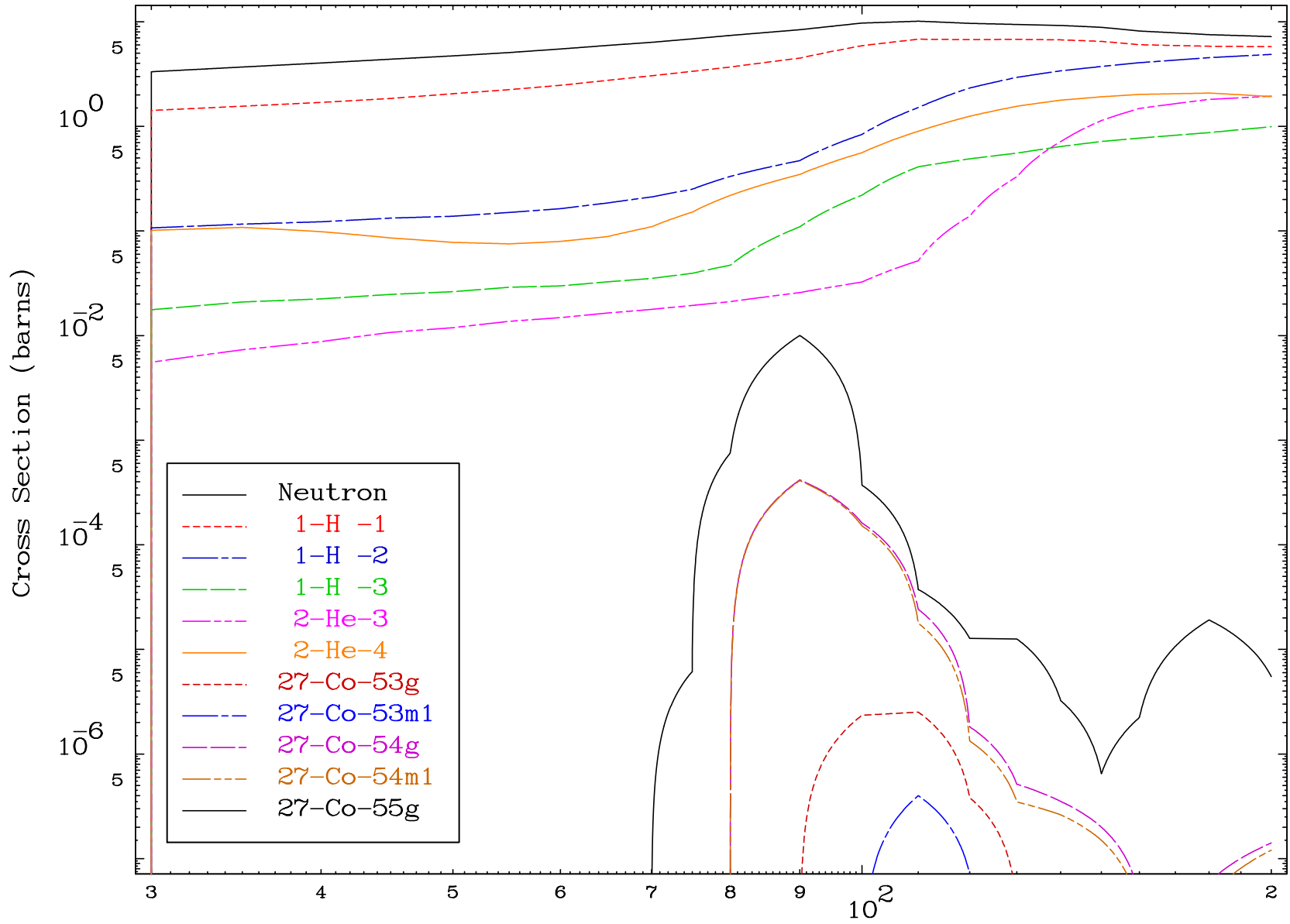
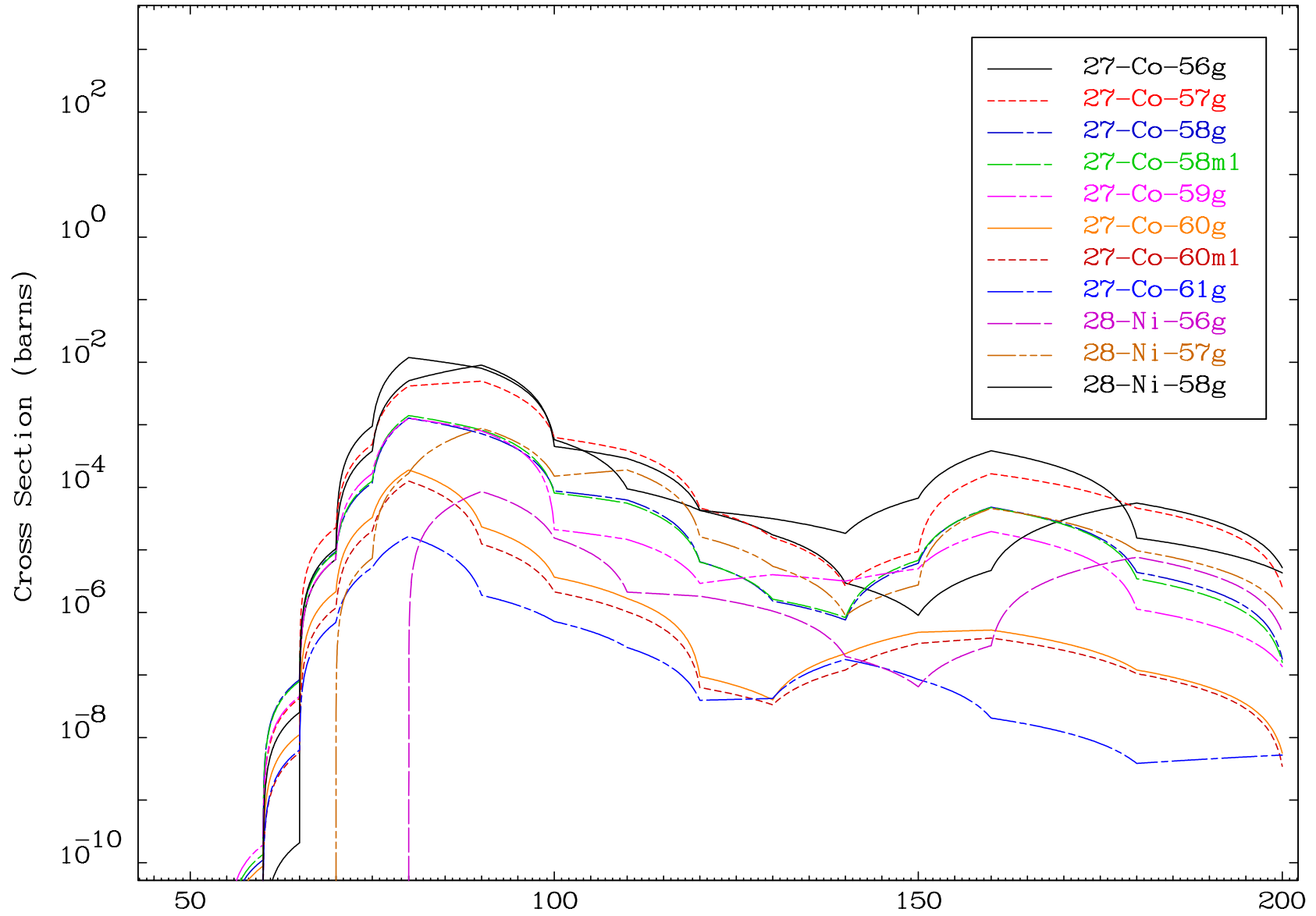


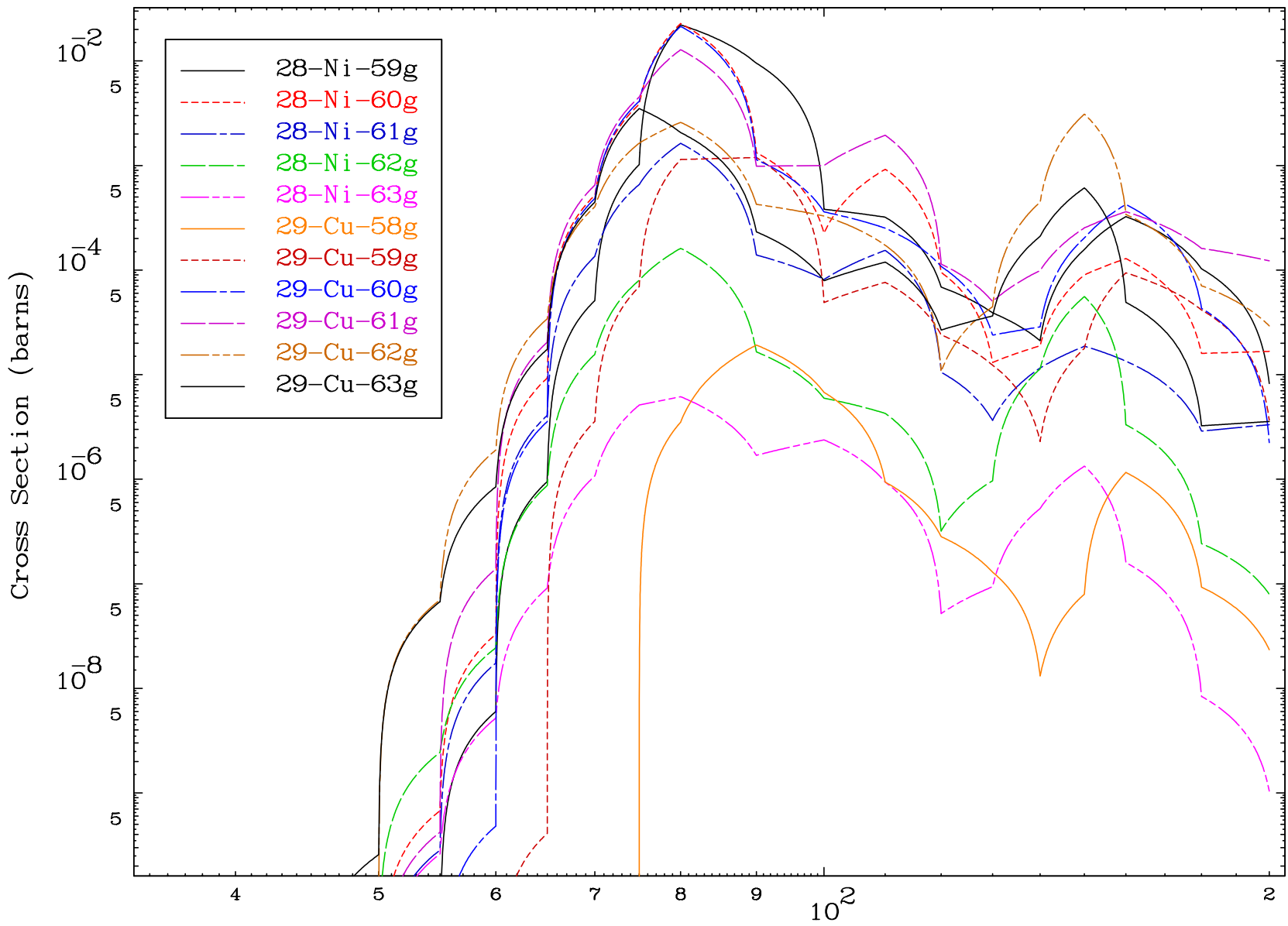
Radionuclide Production Cross Section



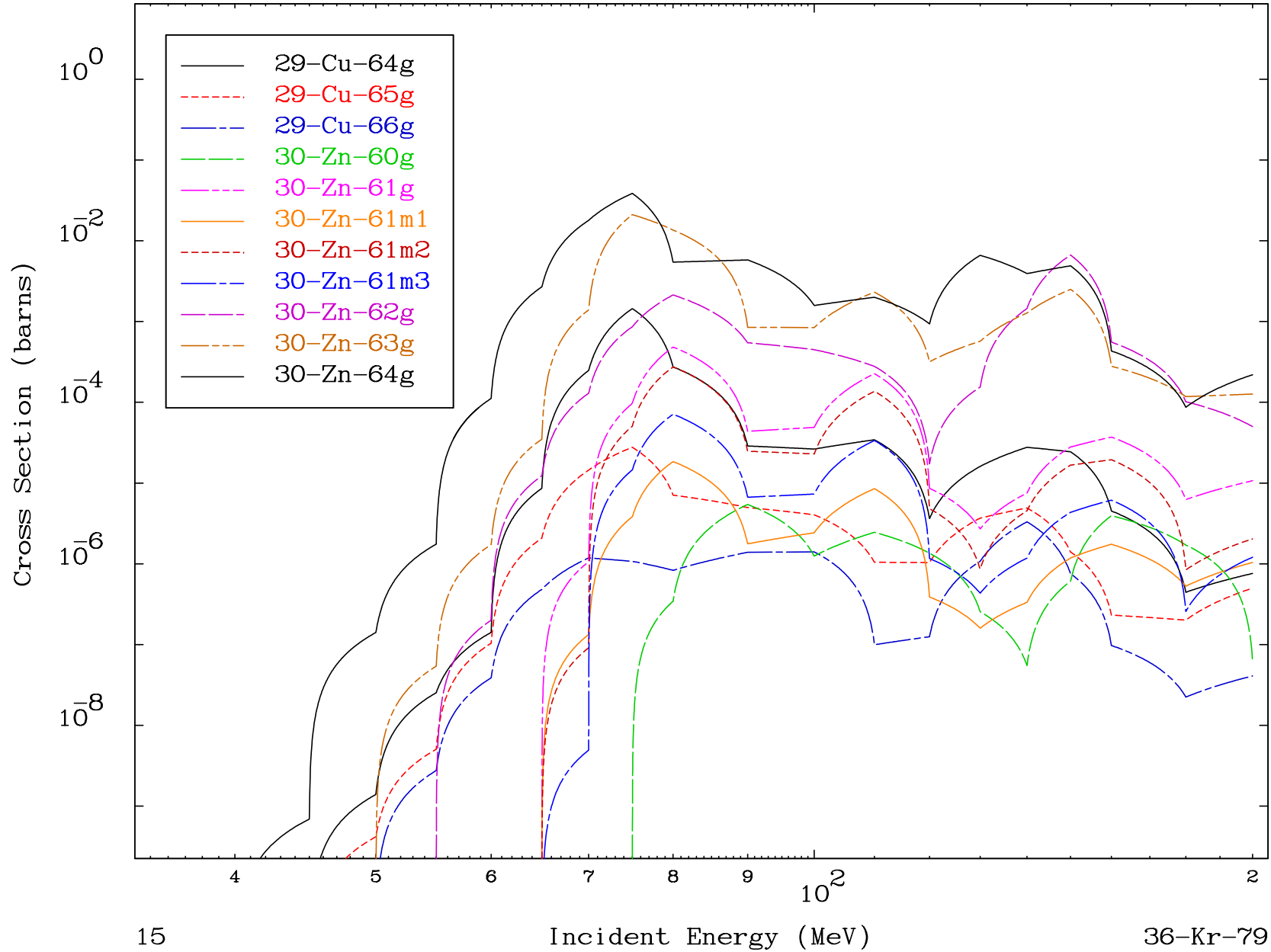
Radionuclide Production Cross Section



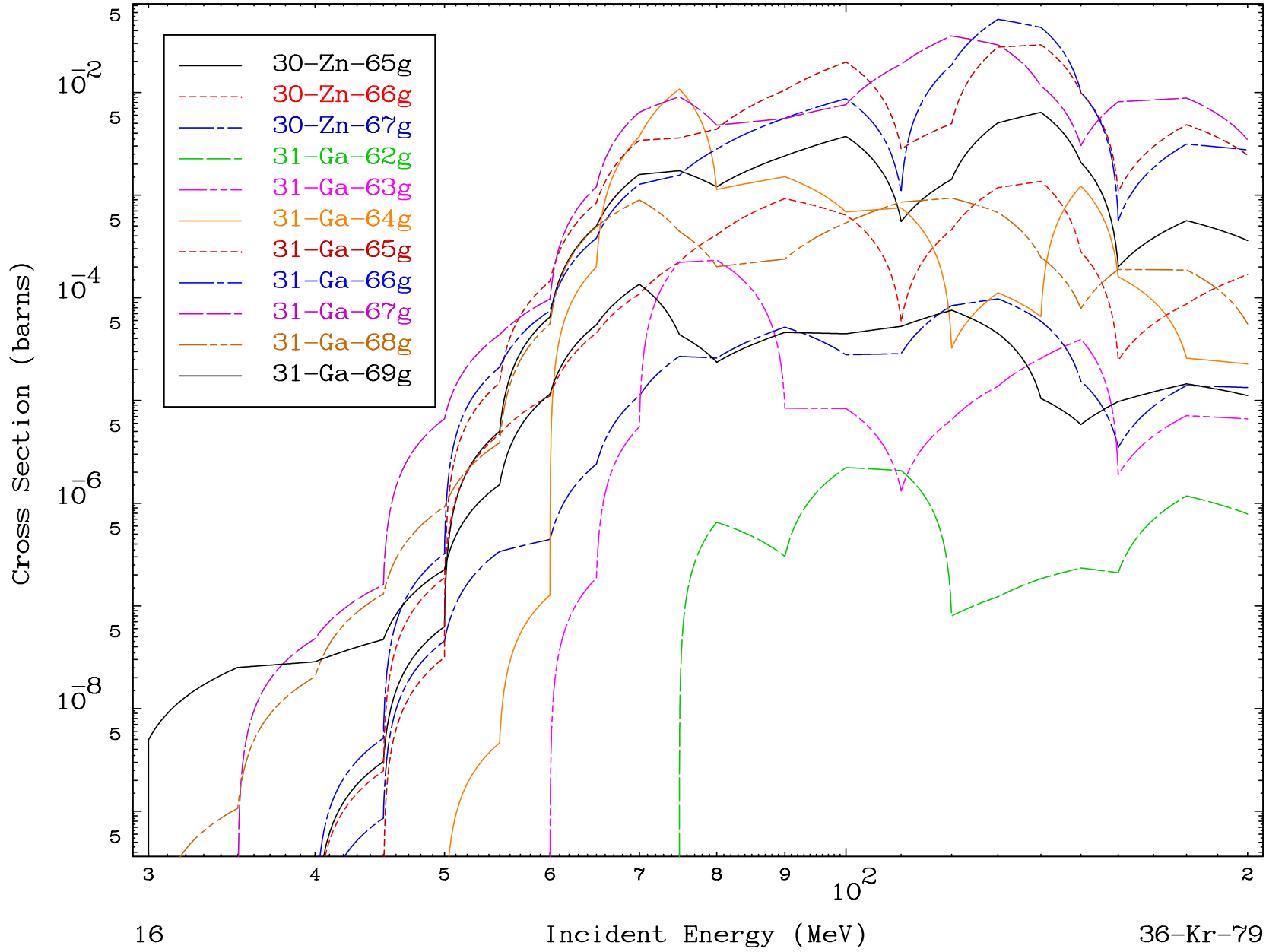
Radionuclide Production Cross Section



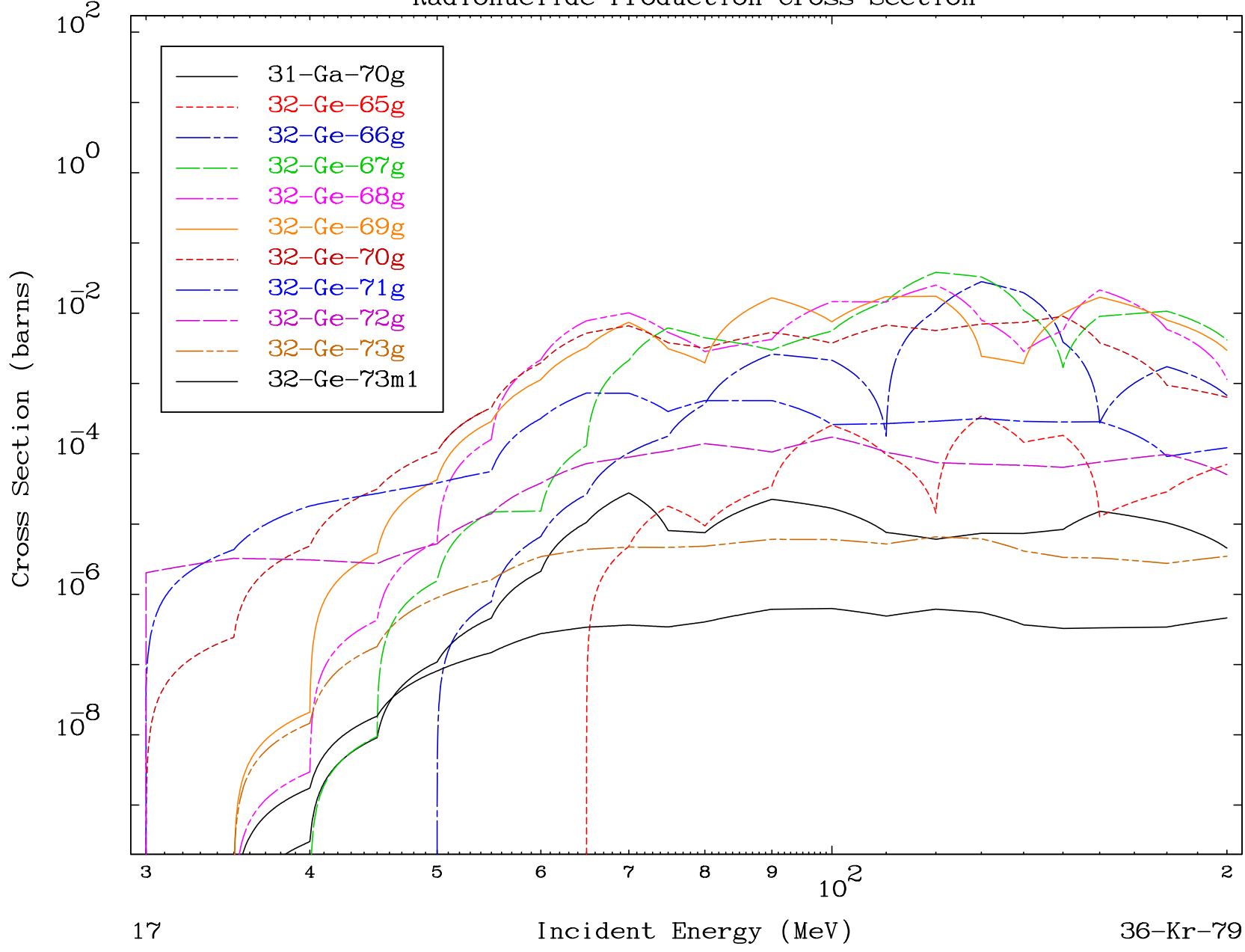
Radionuclide Production Cross Section



Radionuclide Production Cross Section



Radionuclide Production Cross Section

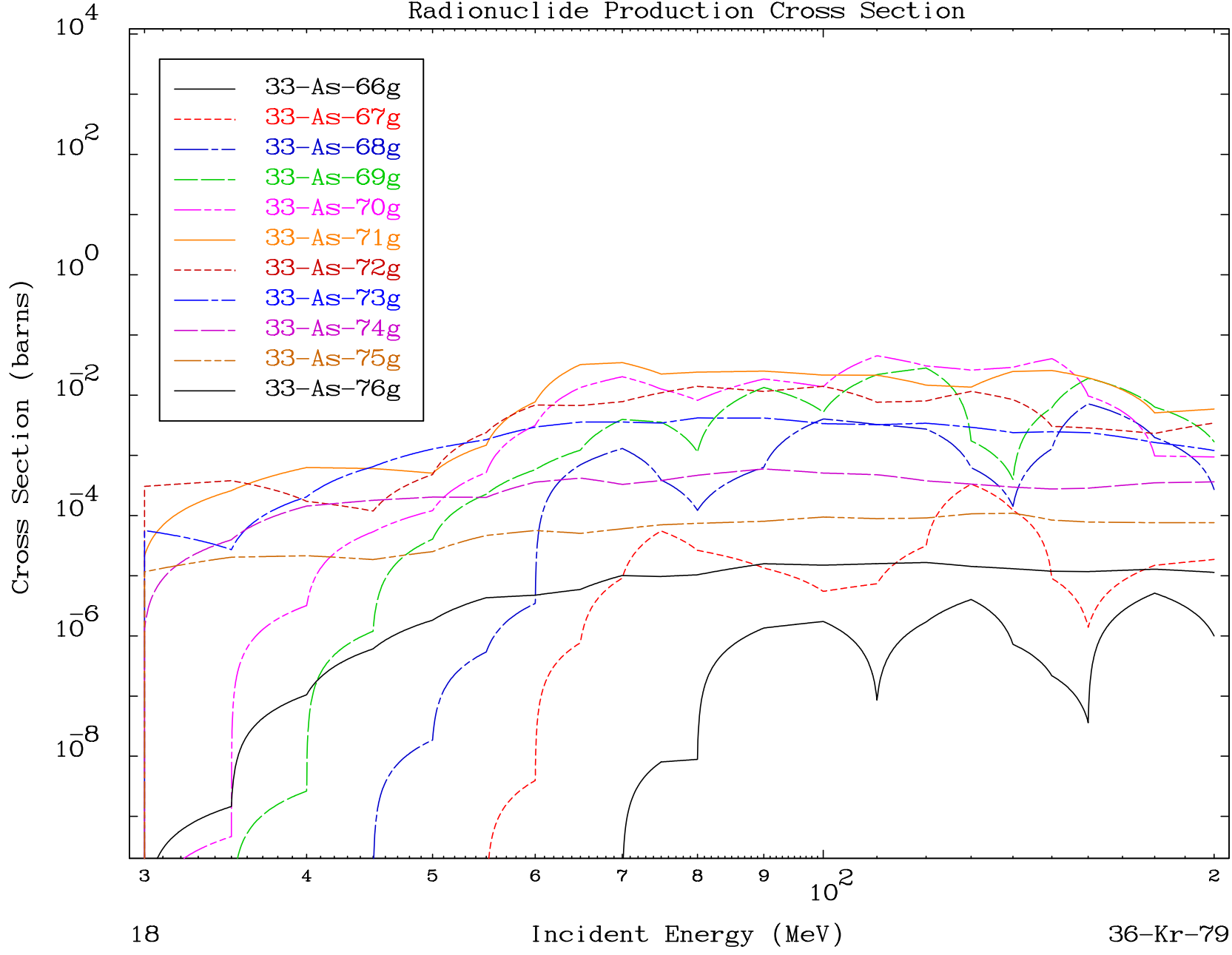


MAT 3629

(d,remainder)

36-Kr-79

Radionuclide Production Cross Section

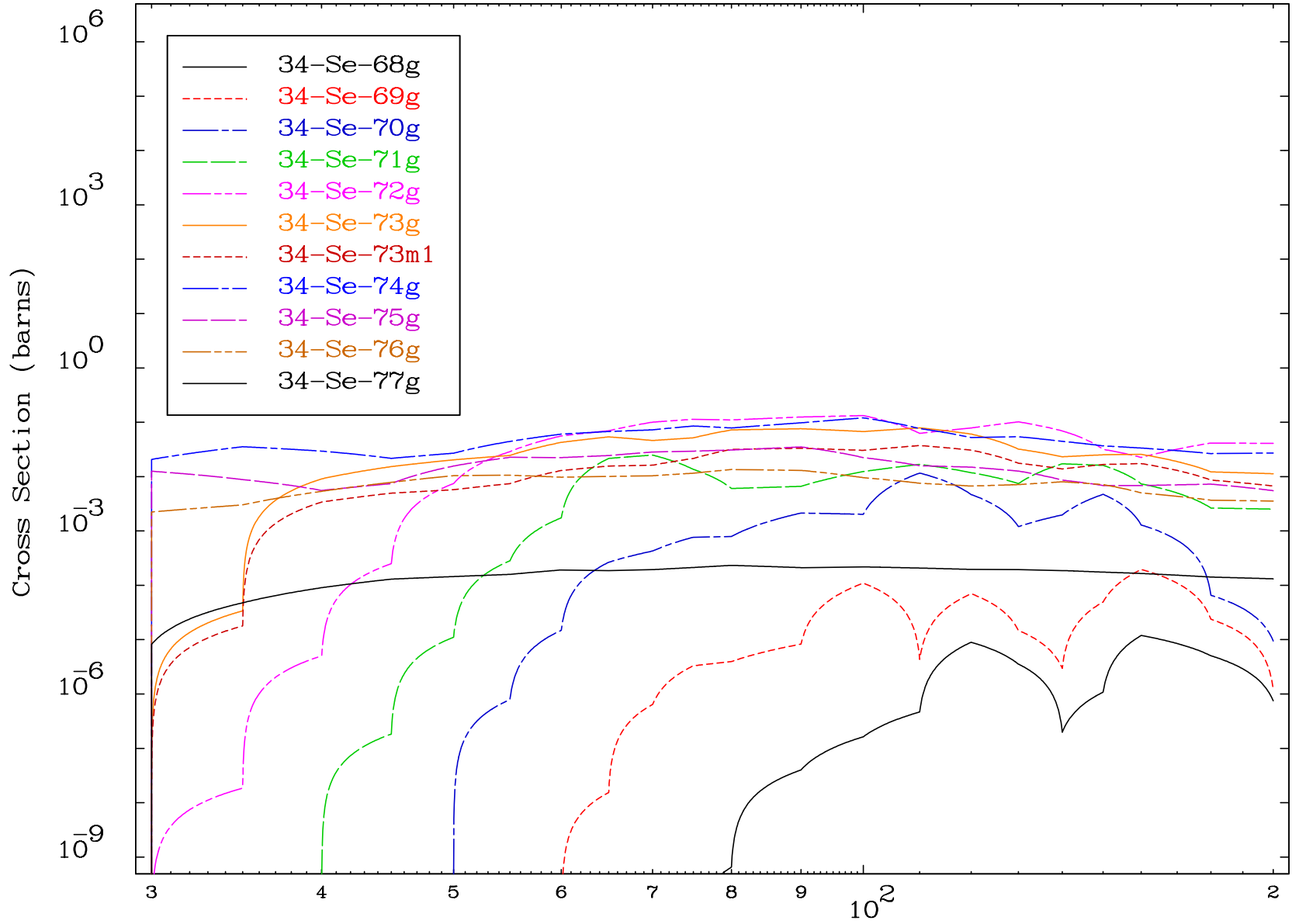


18

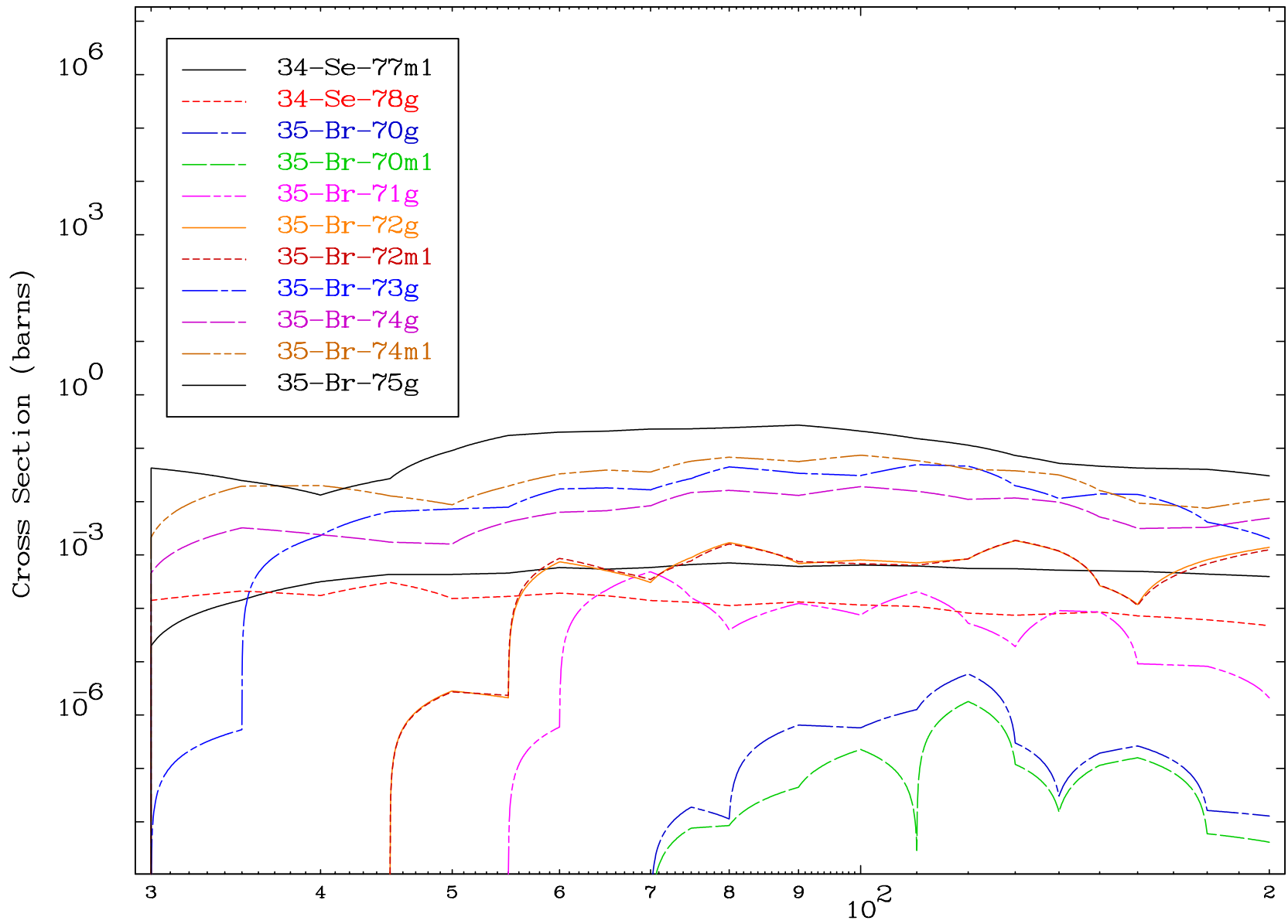
Incident Energy (MeV)

36-Kr-79

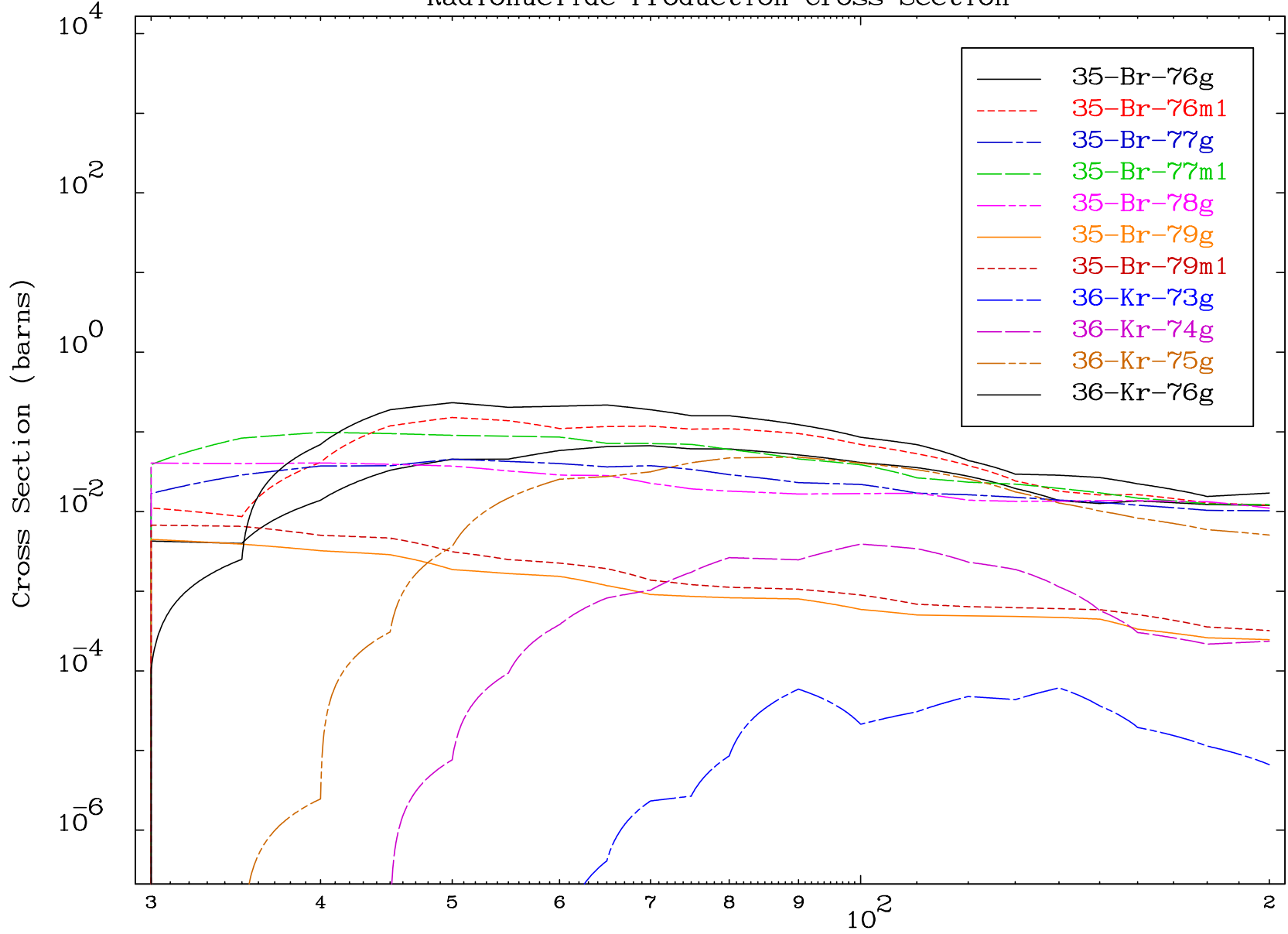
Radionuclide Production Cross Section

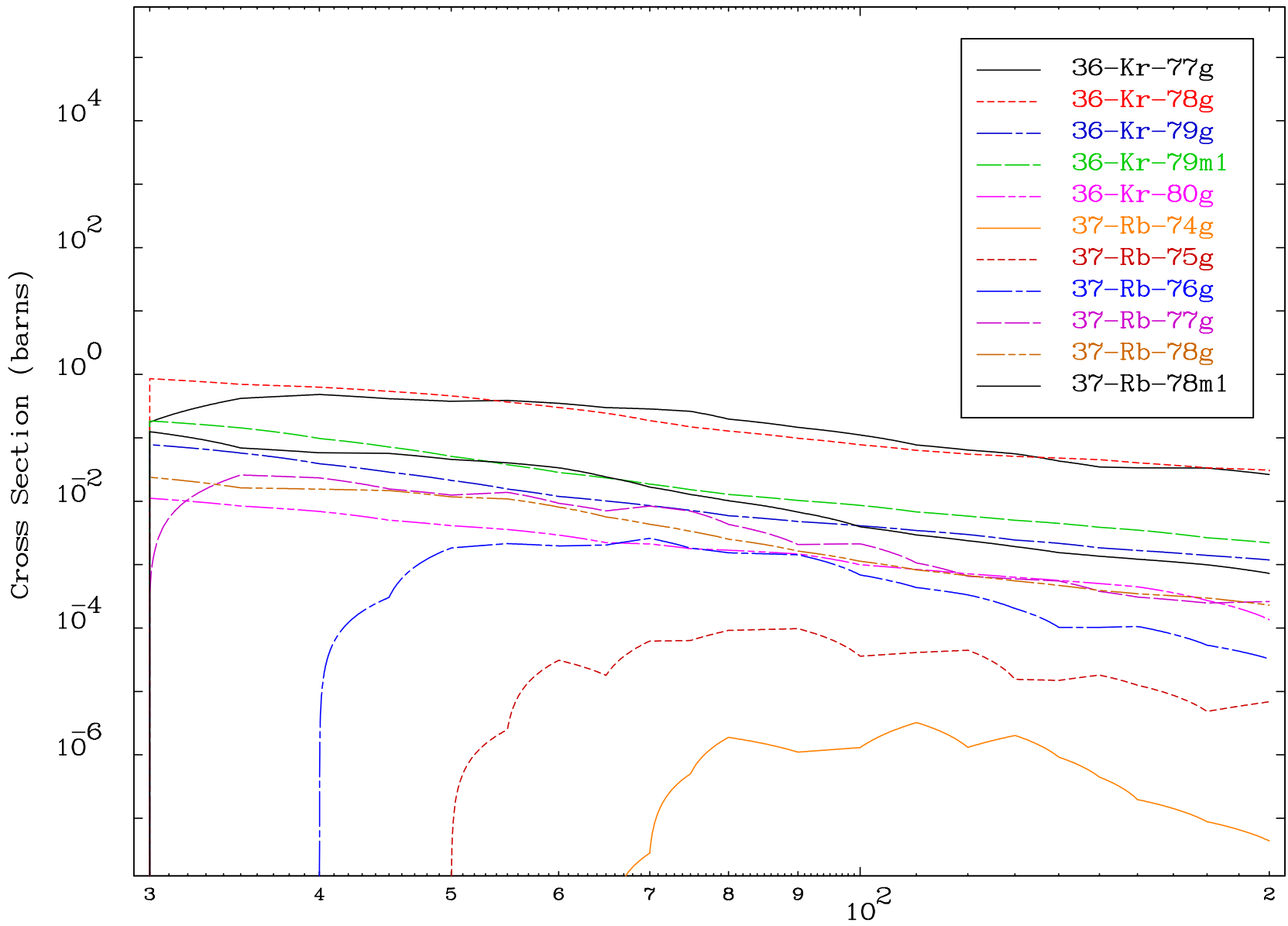


Radionuclide Production Cross Section



Radionuclide Production Cross Section



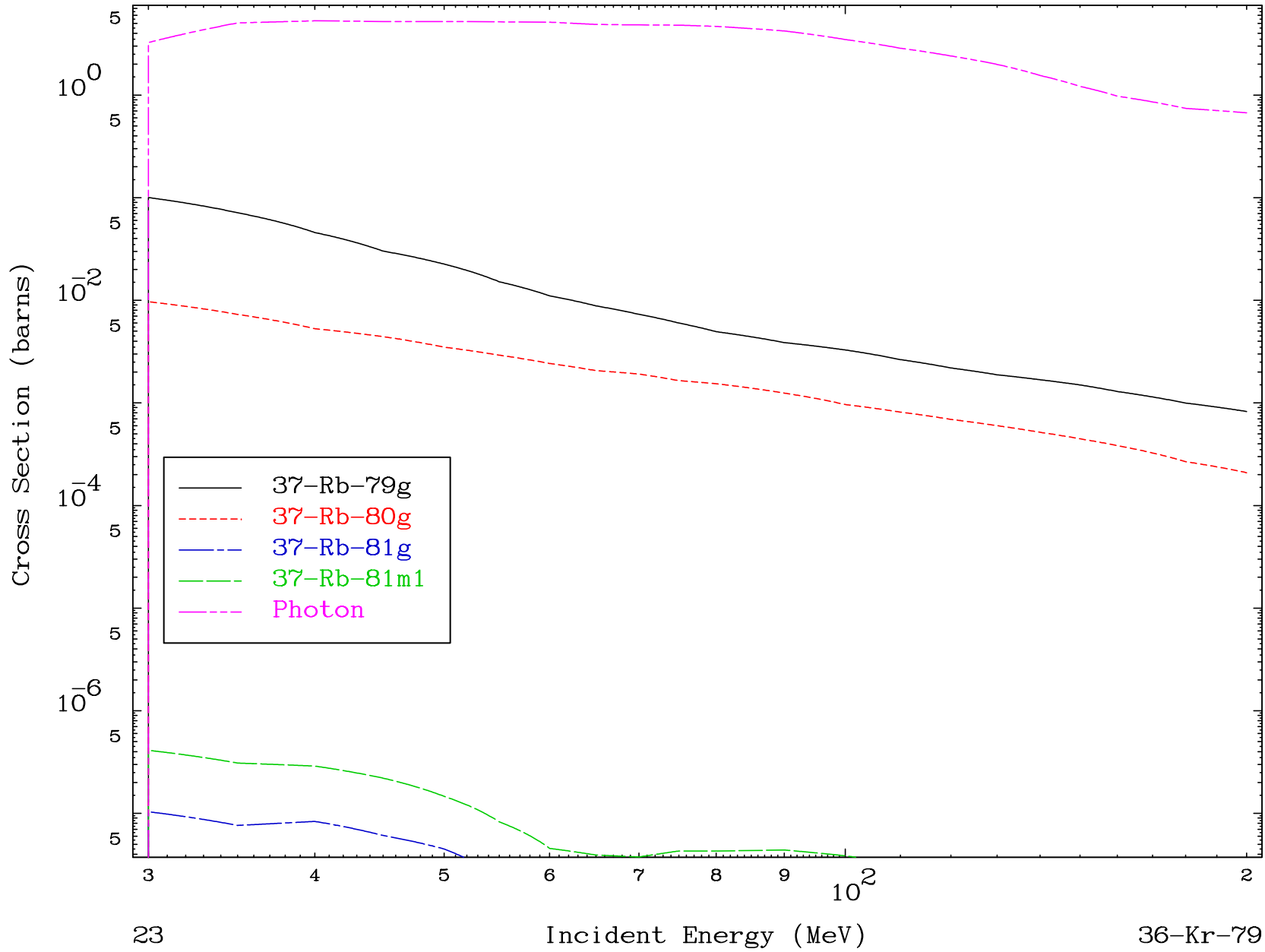


MAT 3629

(d,remainder)

36-Kr-79

Radionuclide Production Cross Section

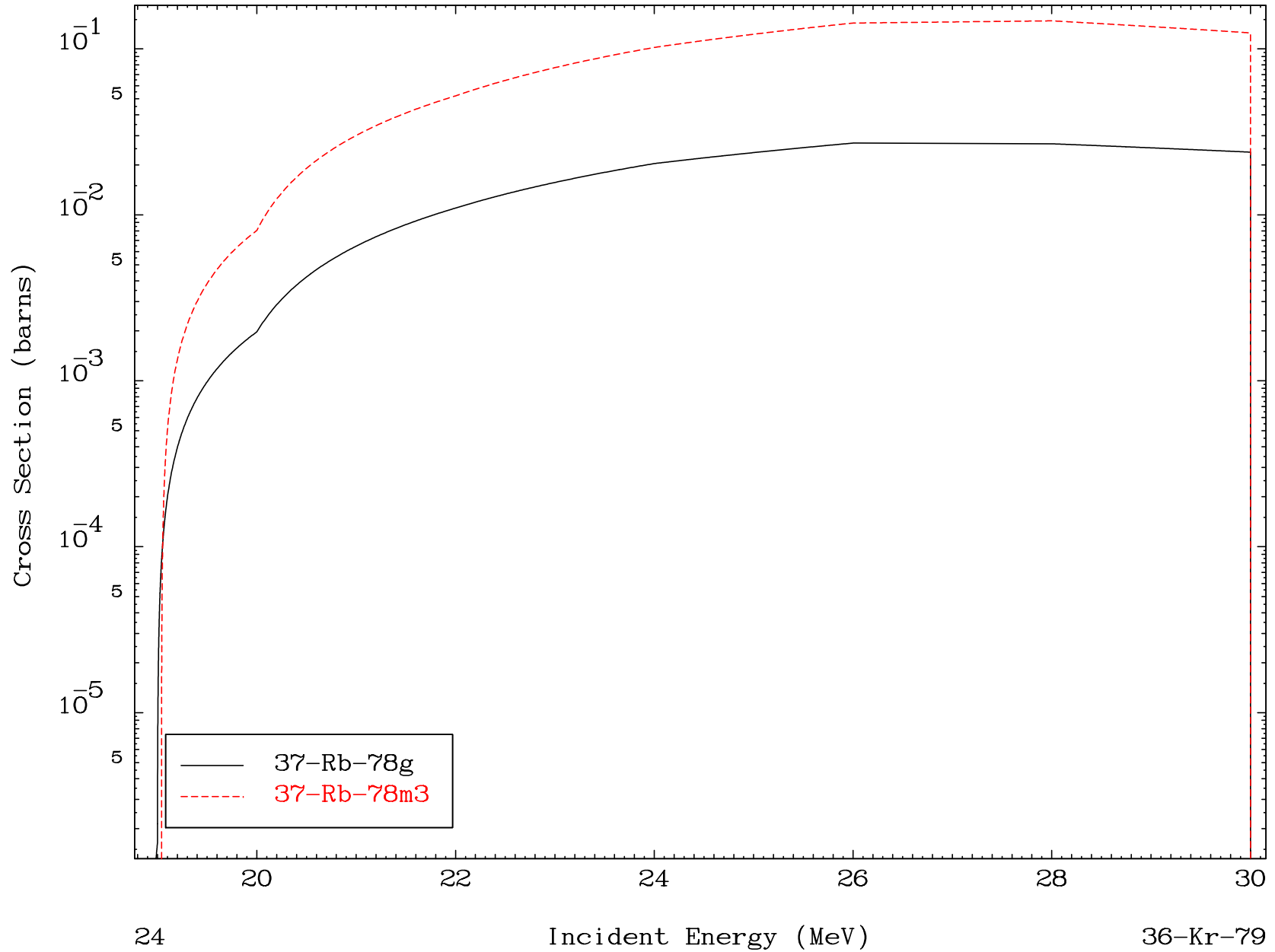


MAT 3629

(d,3n)

36-Kr-79

Radionuclide Production Cross Section

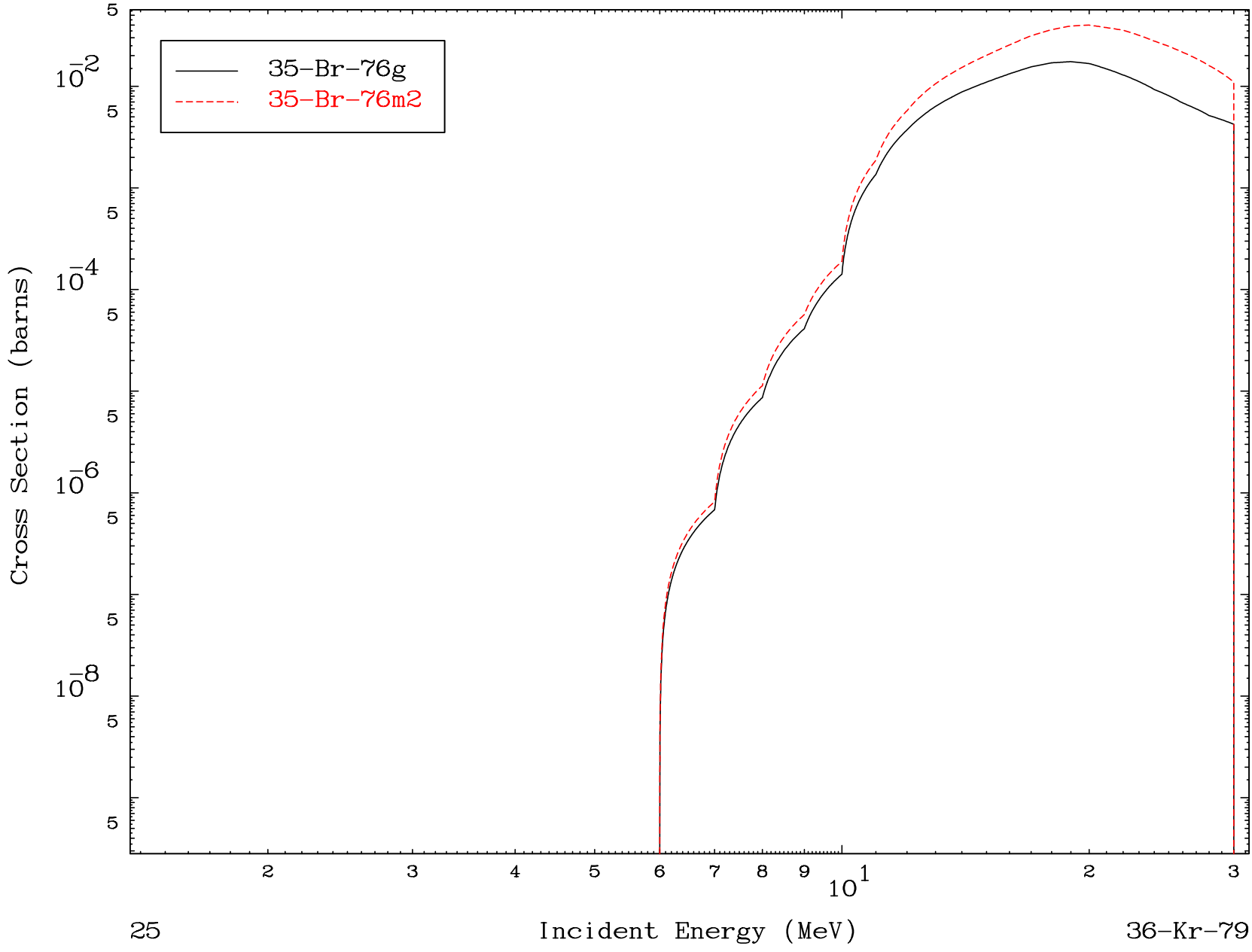


MAT 3629

(d,n') α

36-Kr-79

Radionuclide Production Cross Section



25

Incident Energy (MeV)

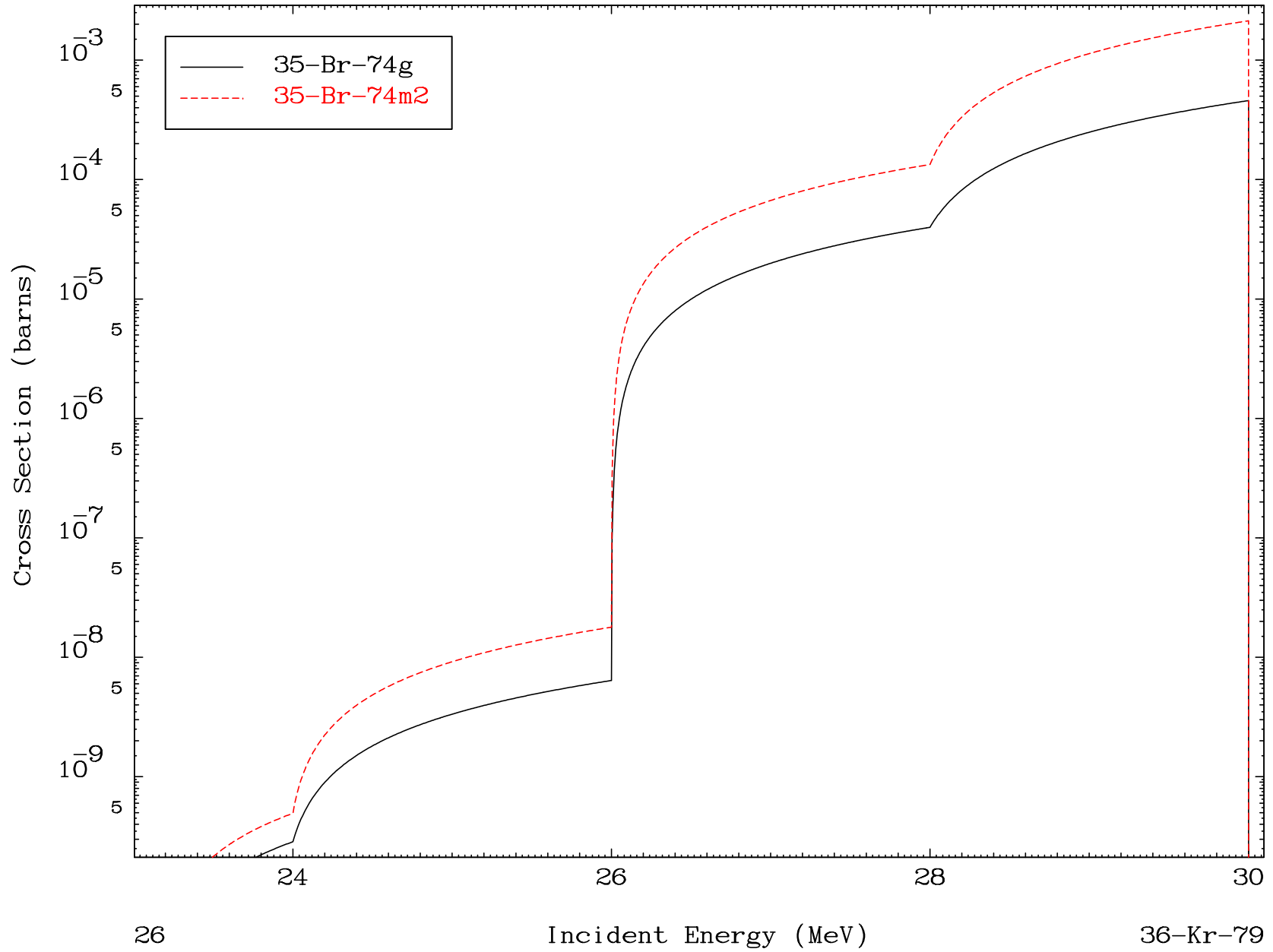
36-Kr-79

MAT 3629

(d,3n) α

36-Kr-79

Radionuclide Production Cross Section

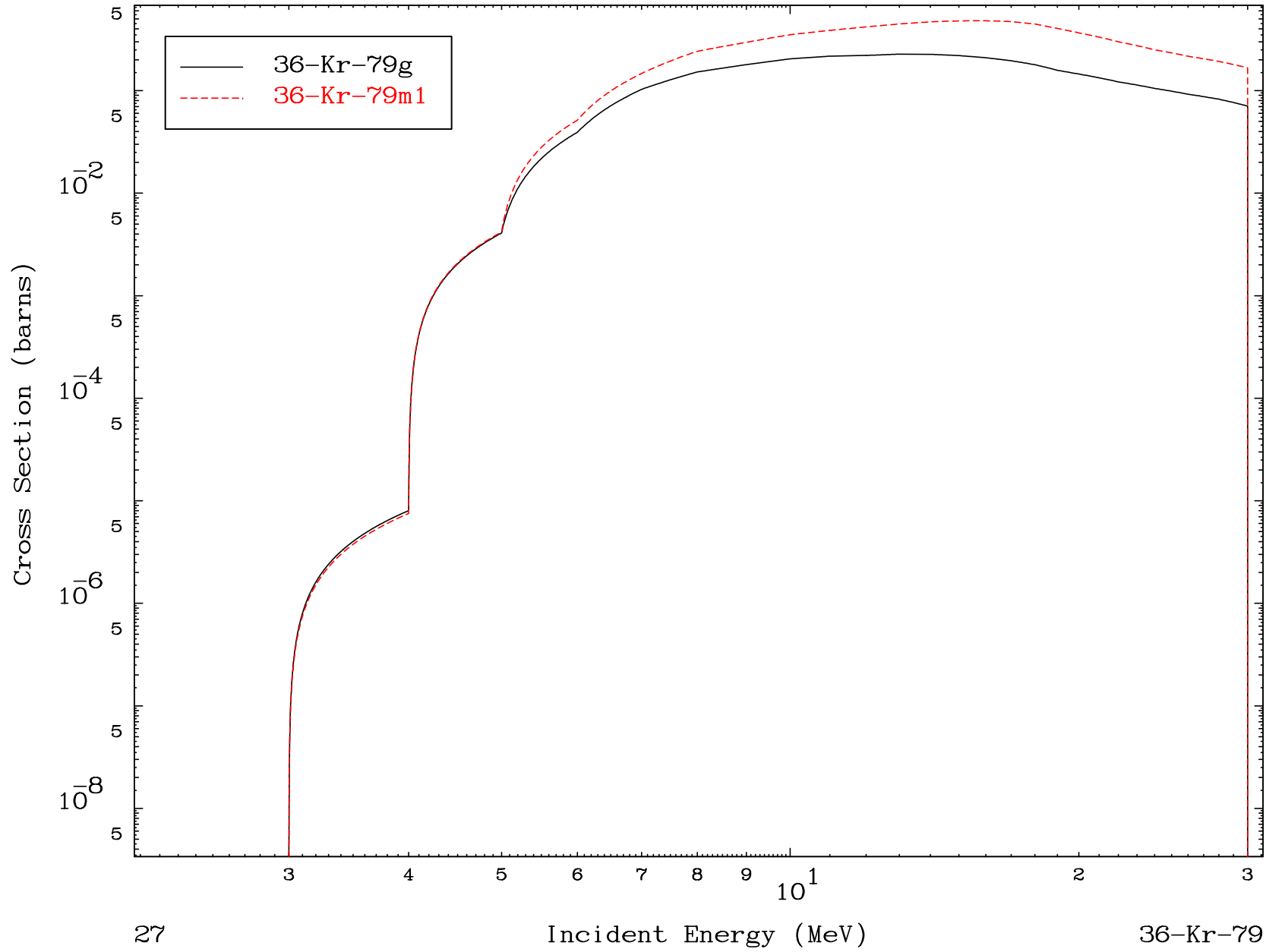


MAT 3629

(d,n') p

36-Kr-79

Radionuclide Production Cross Section

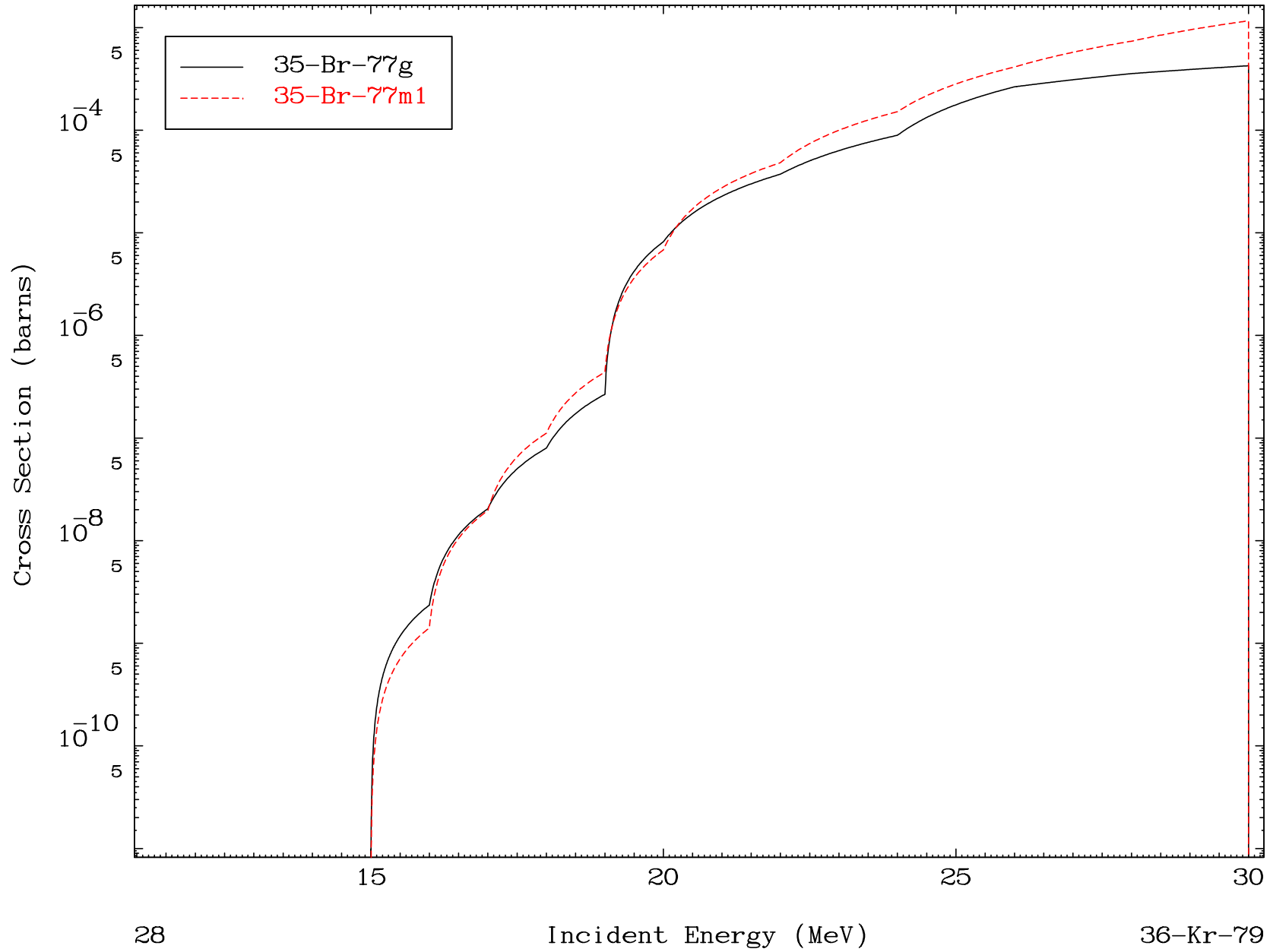


MAT 3629

(d,n') He-3

36-Kr-79

Radionuclide Production Cross Section

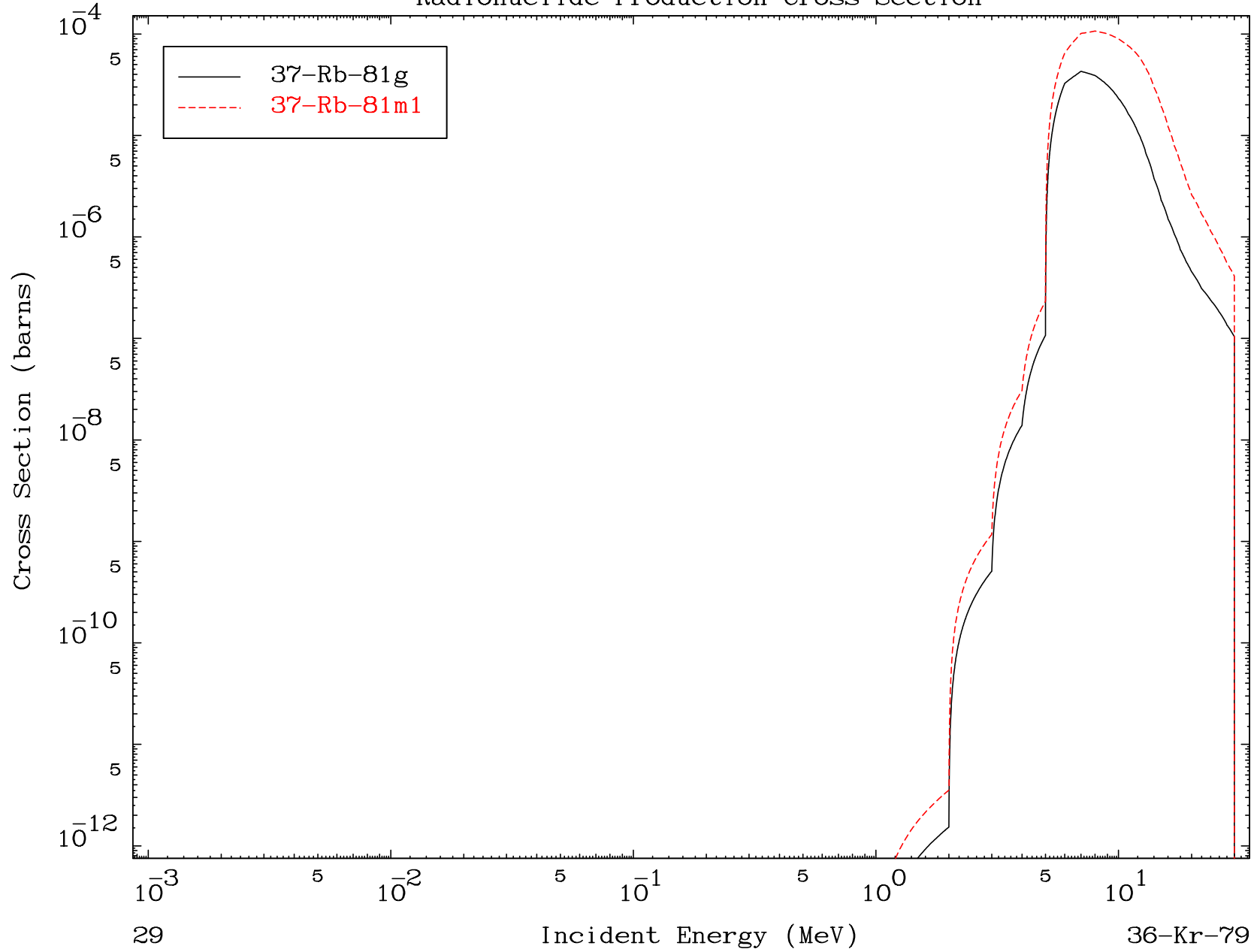


MAT 3629

(d, γ)

36-Kr-79

Radionuclide Production Cross Section

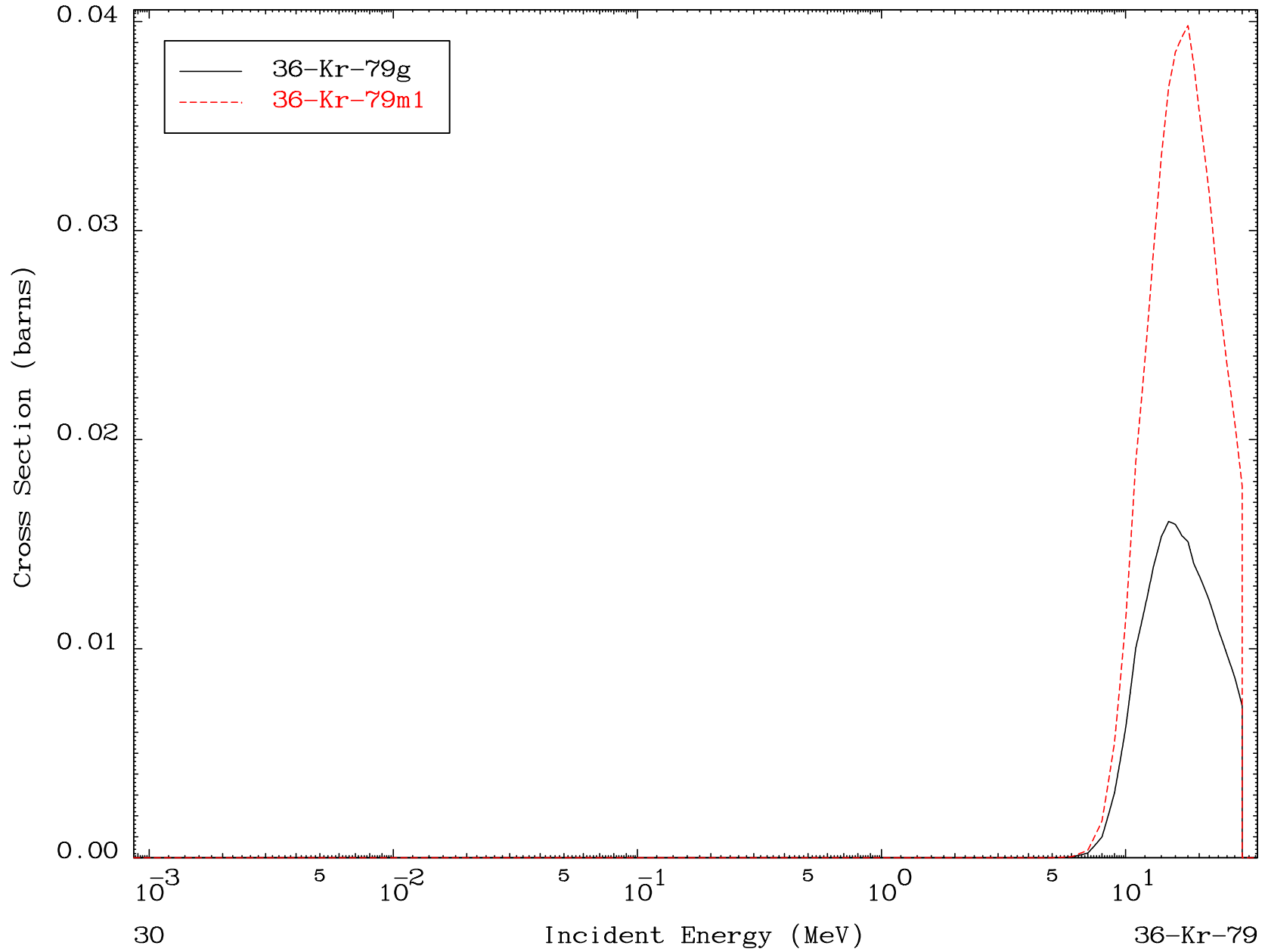


MAT 3629

(d,d)

36-Kr-79

Radionuclide Production Cross Section

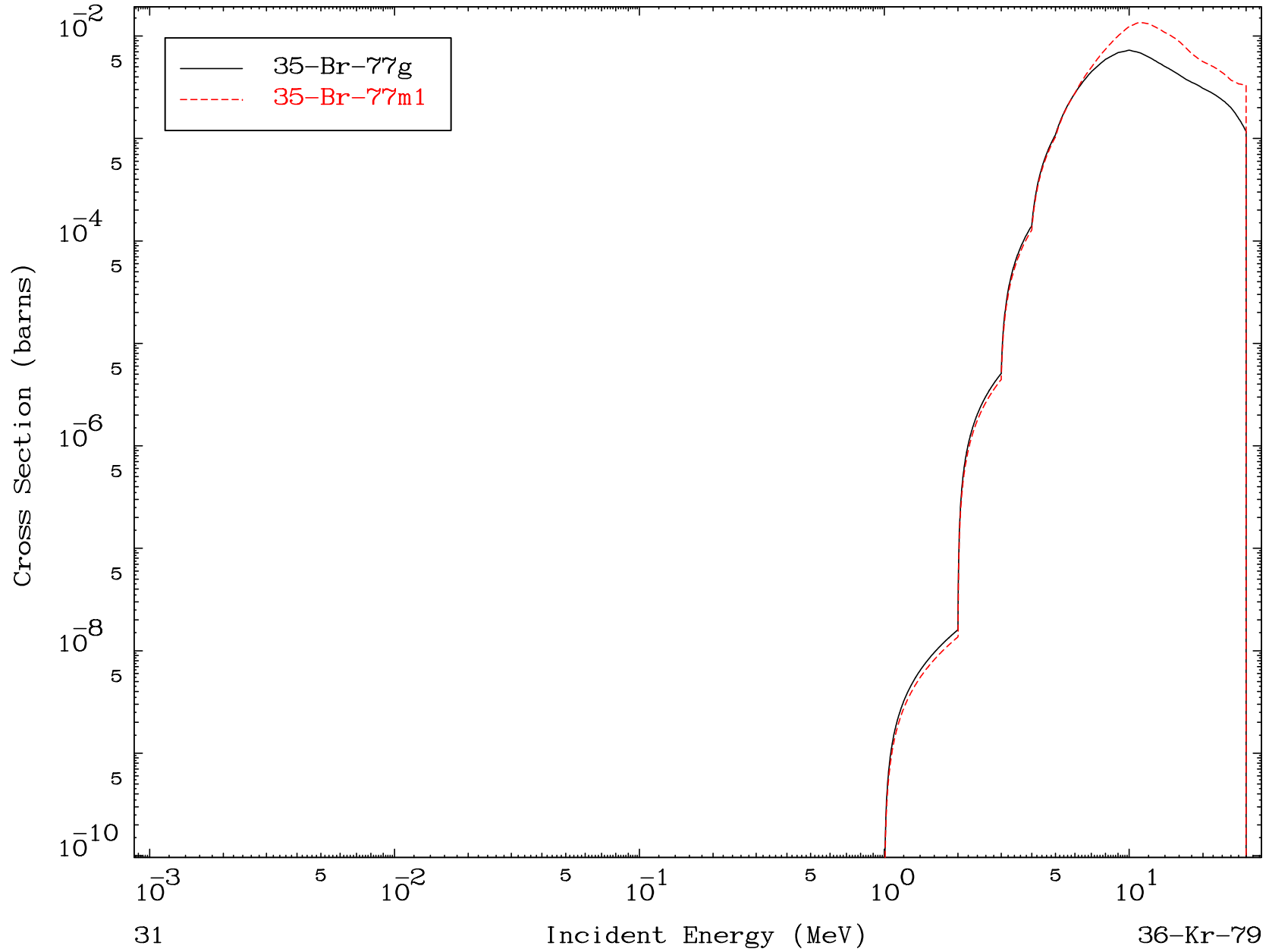


MAT 3629

(d, α)

36-Kr-79

Radionuclide Production Cross Section

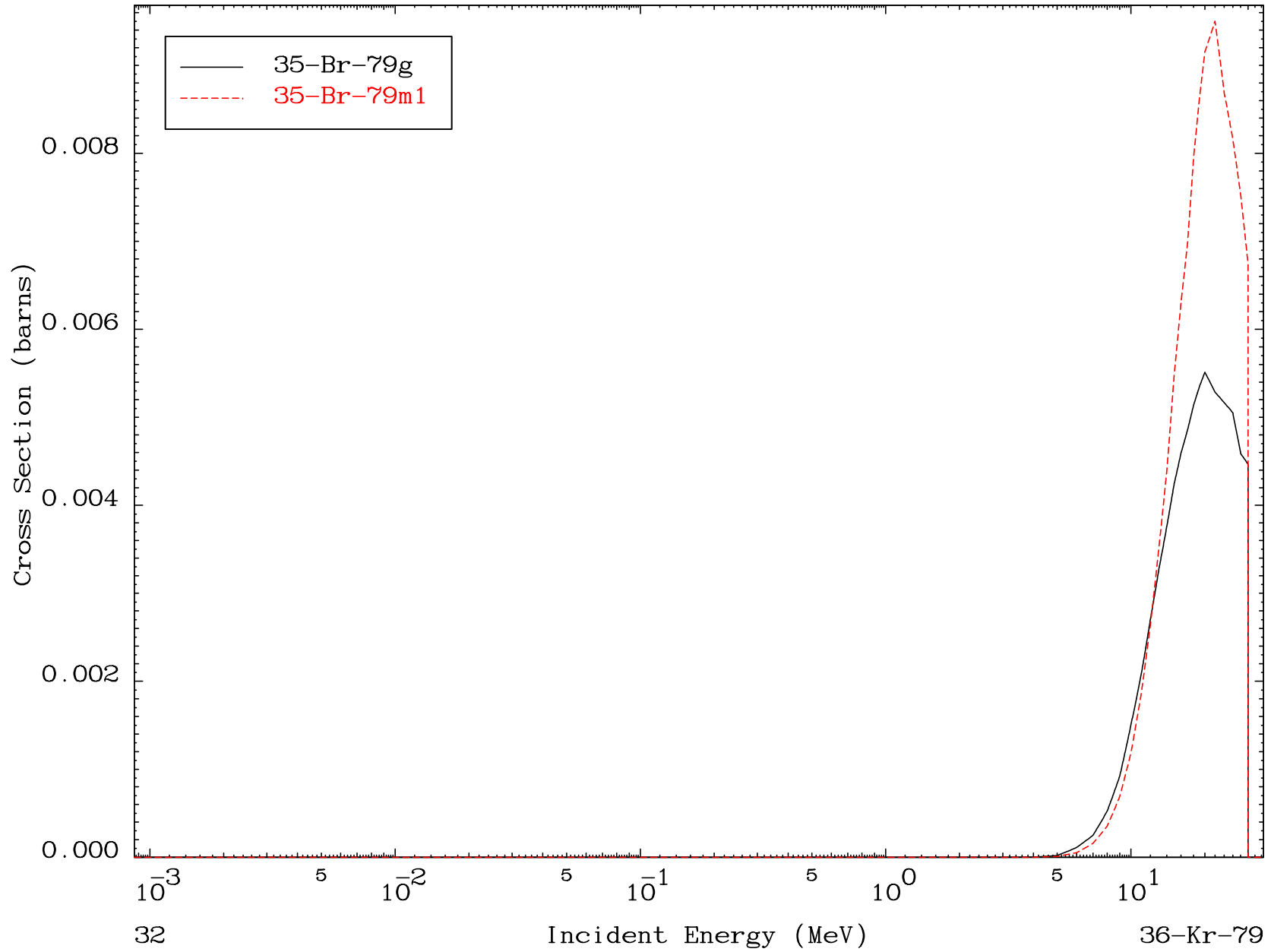


MAT 3629

(d,2p)

36-Kr-79

Radionuclide Production Cross Section



MAT 3629

(d,p) t

36-Kr-79

Radionuclide Production Cross Section

