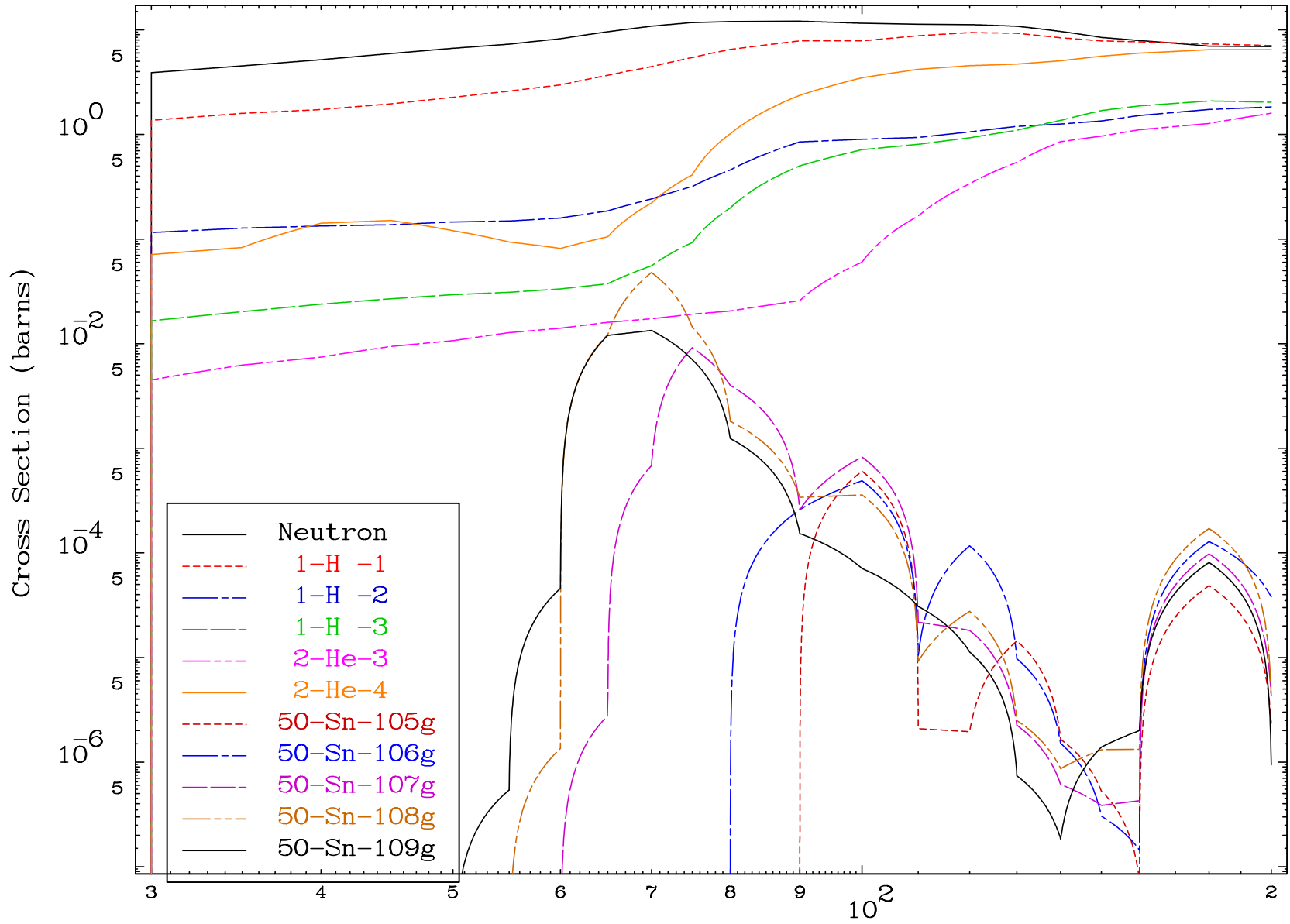
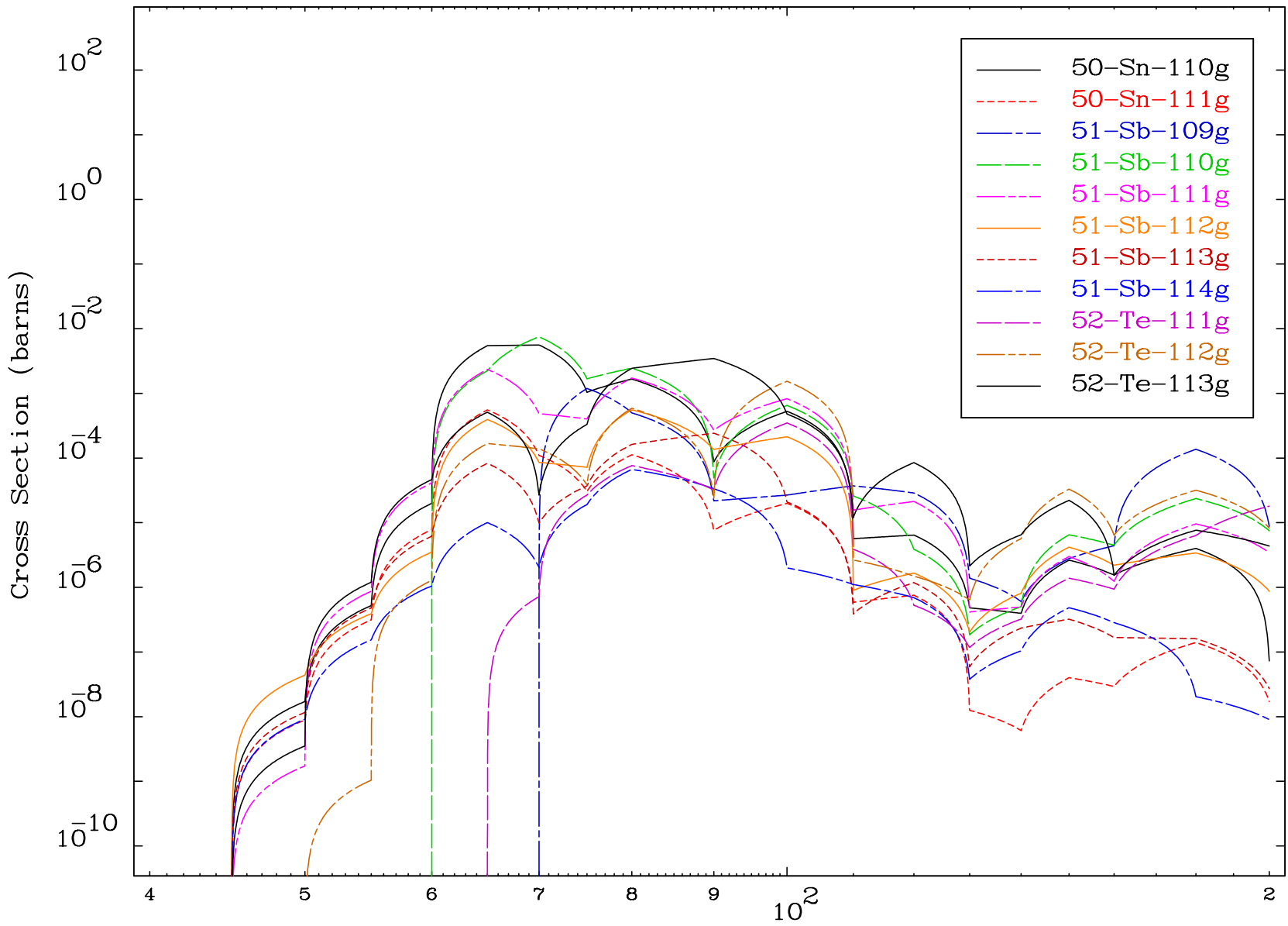


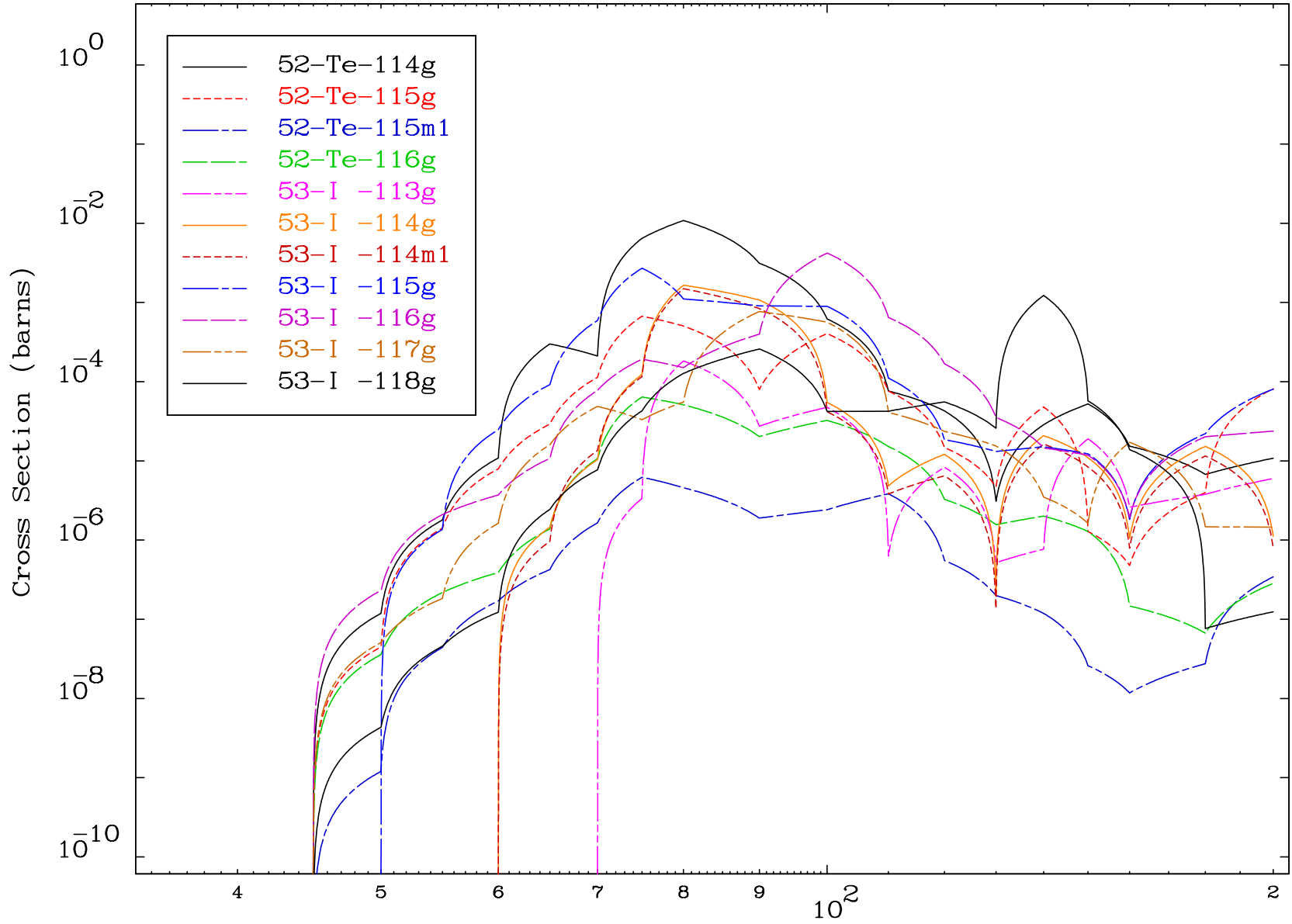
Radionuclide Production Cross Section



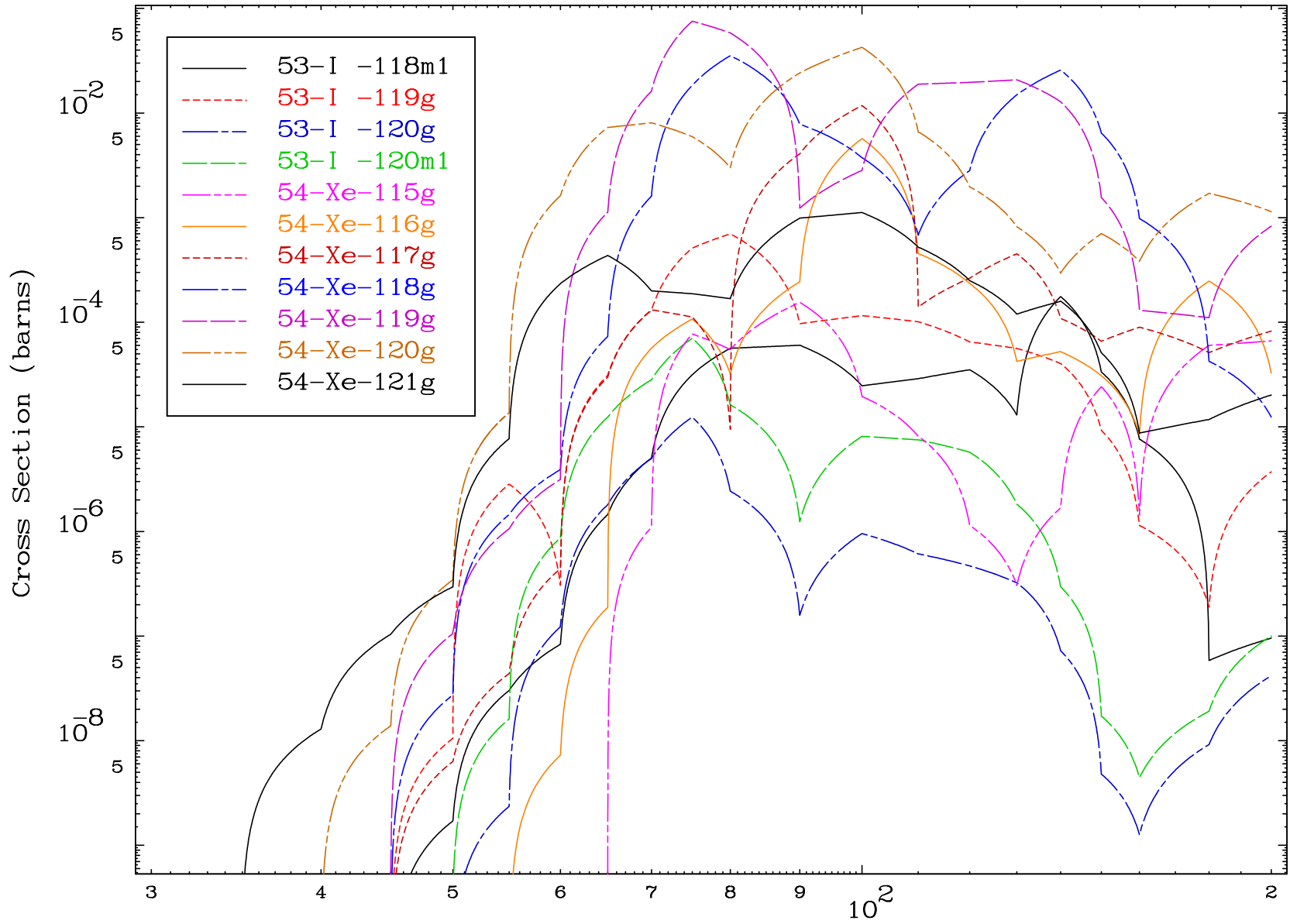
Radionuclide Production Cross Section



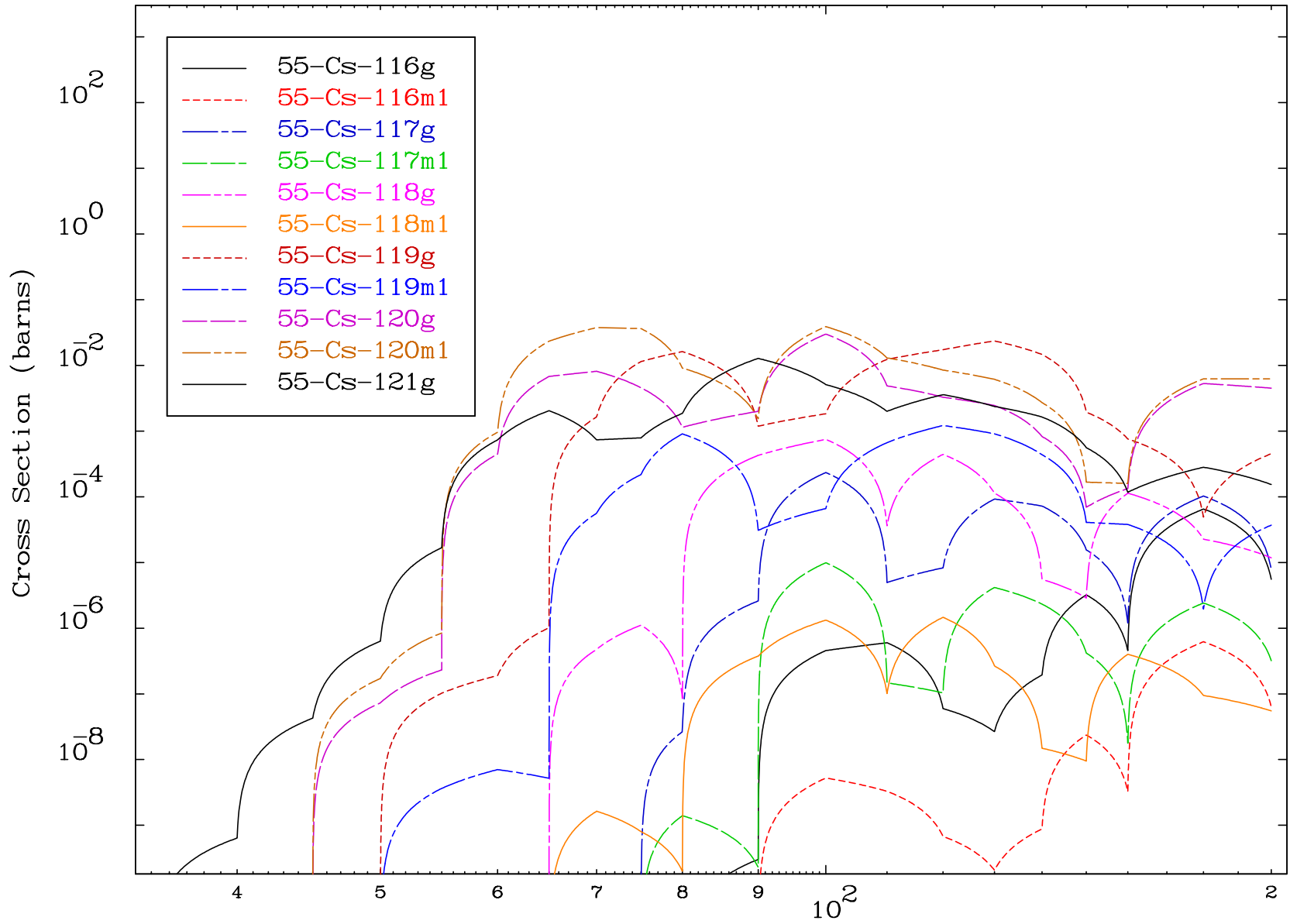
Radionuclide Production Cross Section



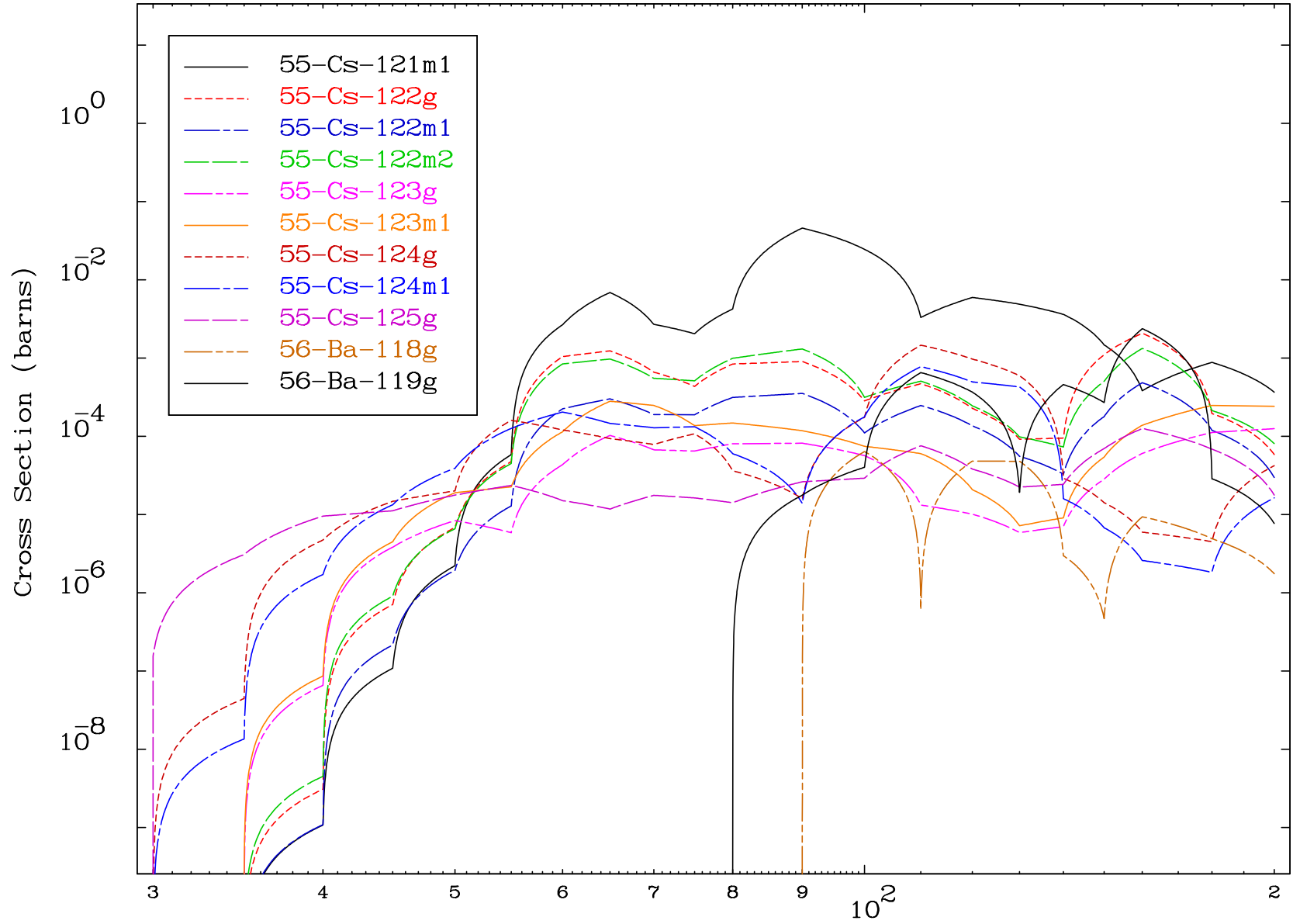
Radionuclide Production Cross Section

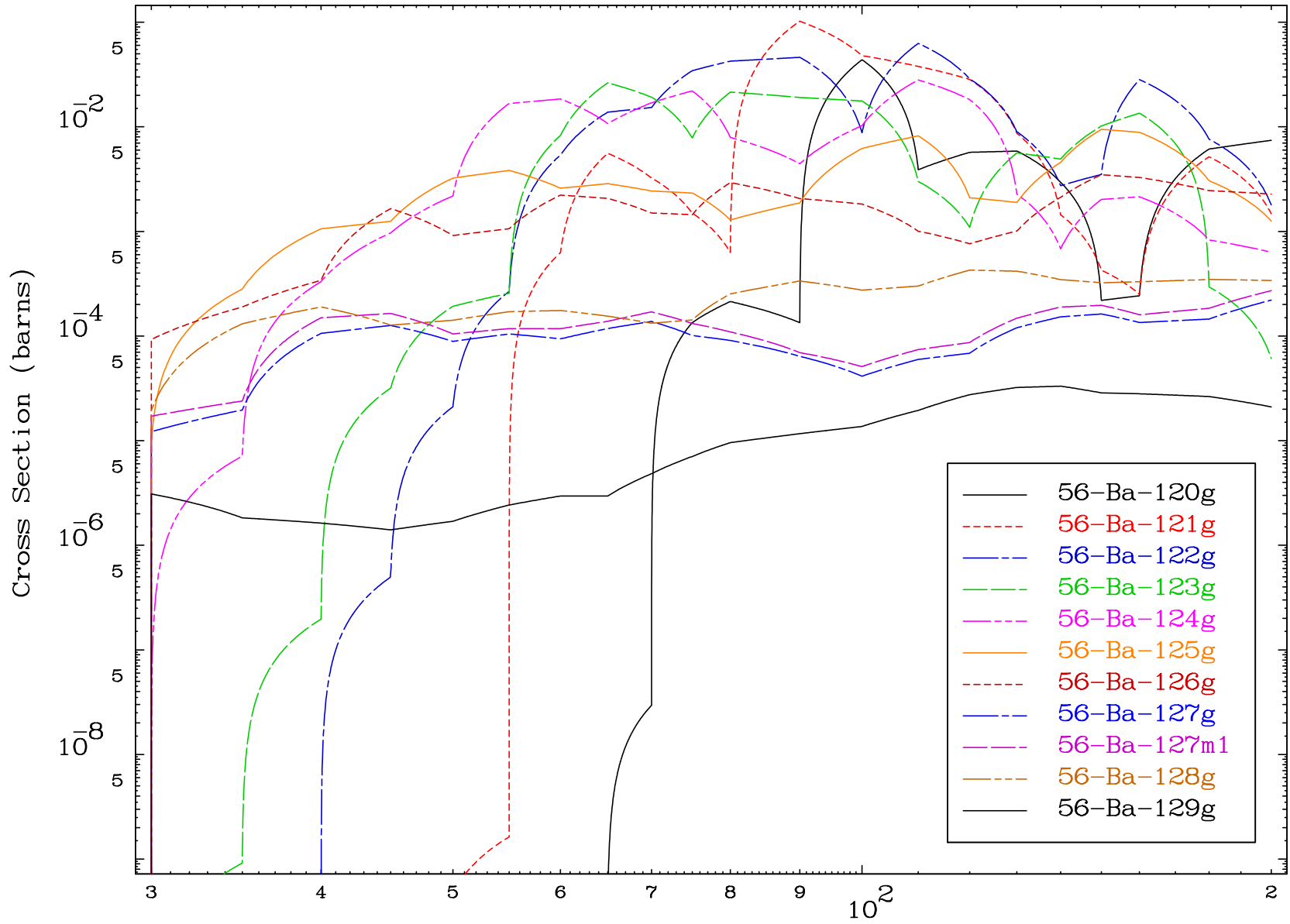


Radionuclide Production Cross Section

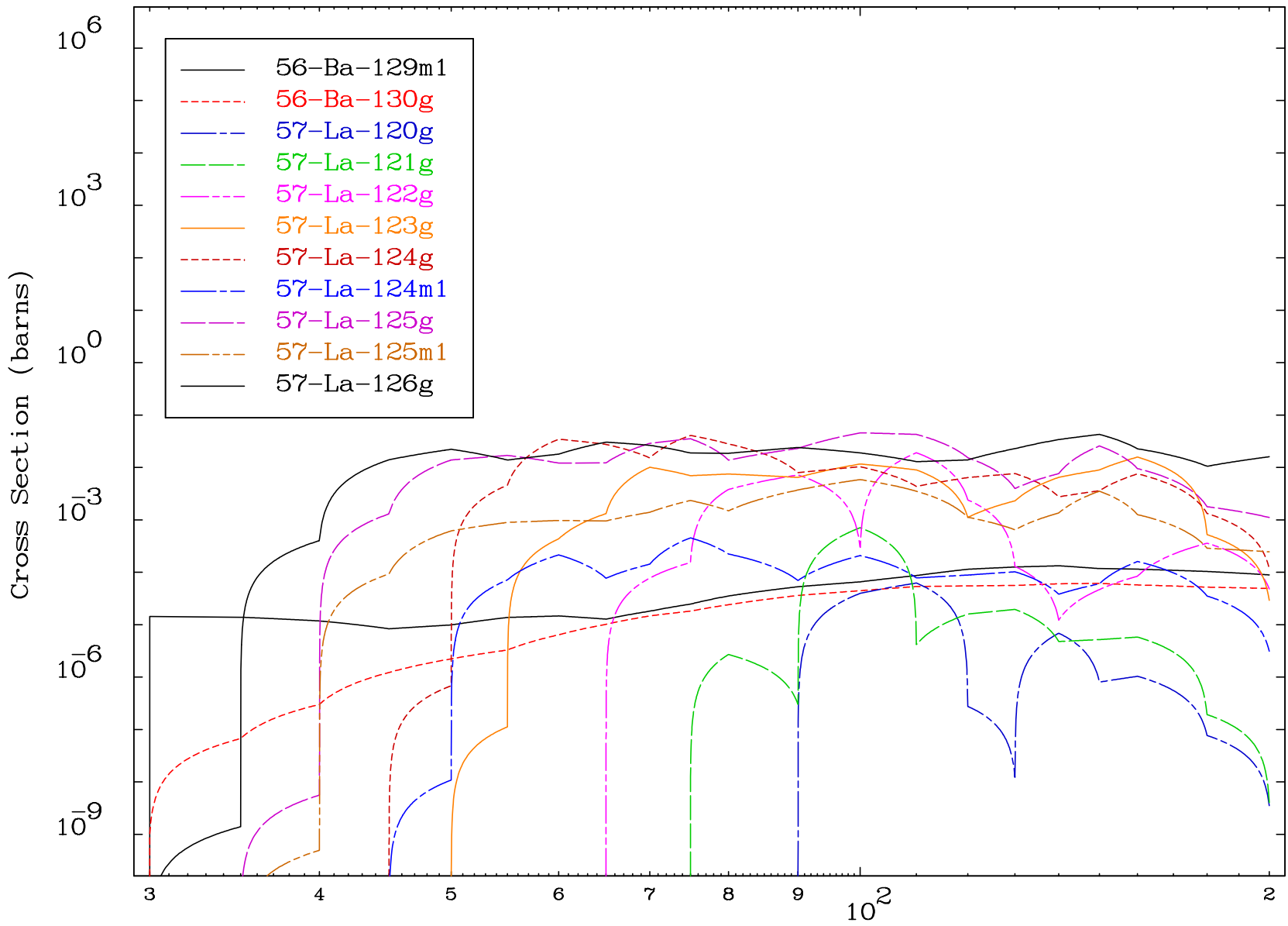


Radionuclide Production Cross Section

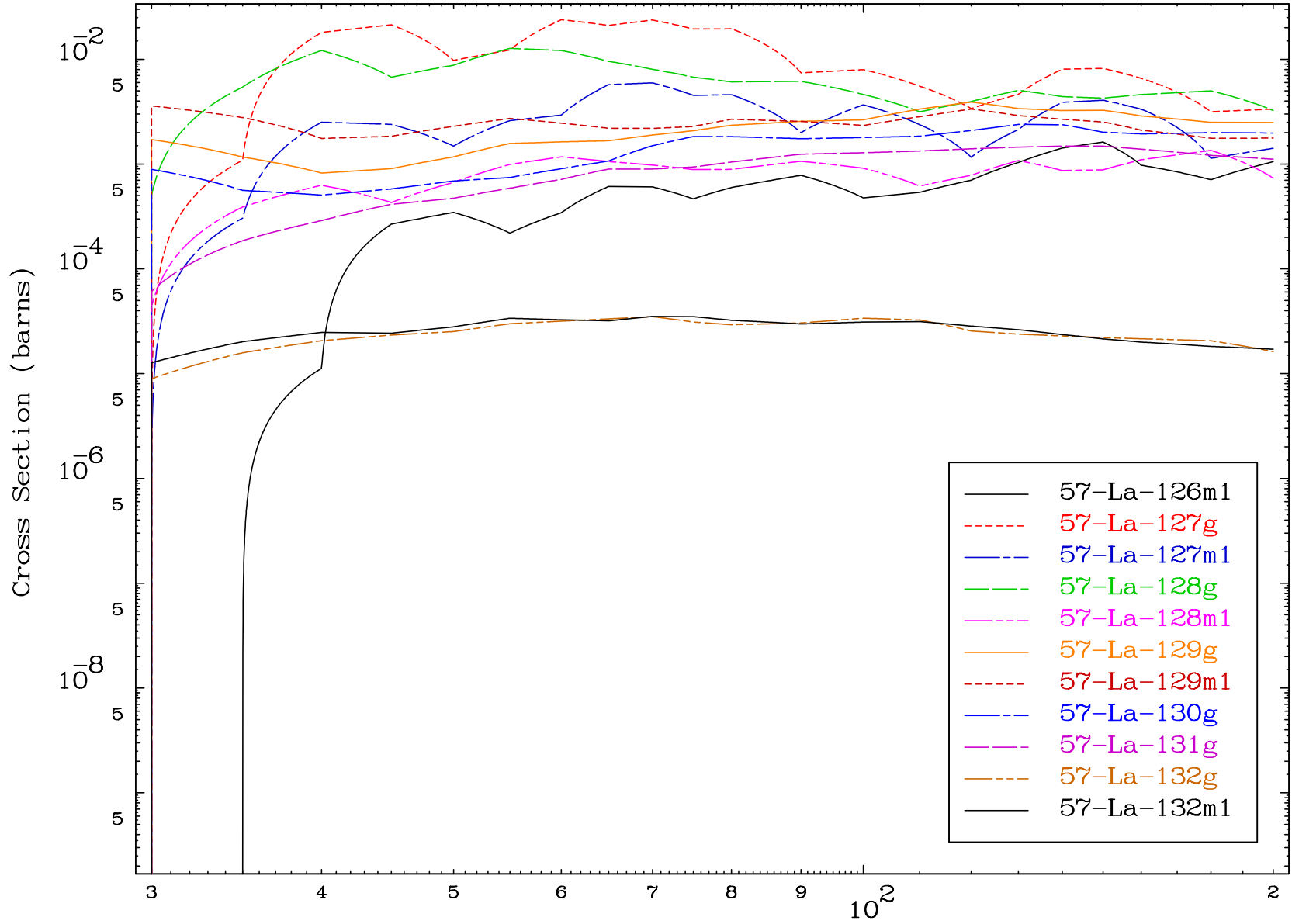




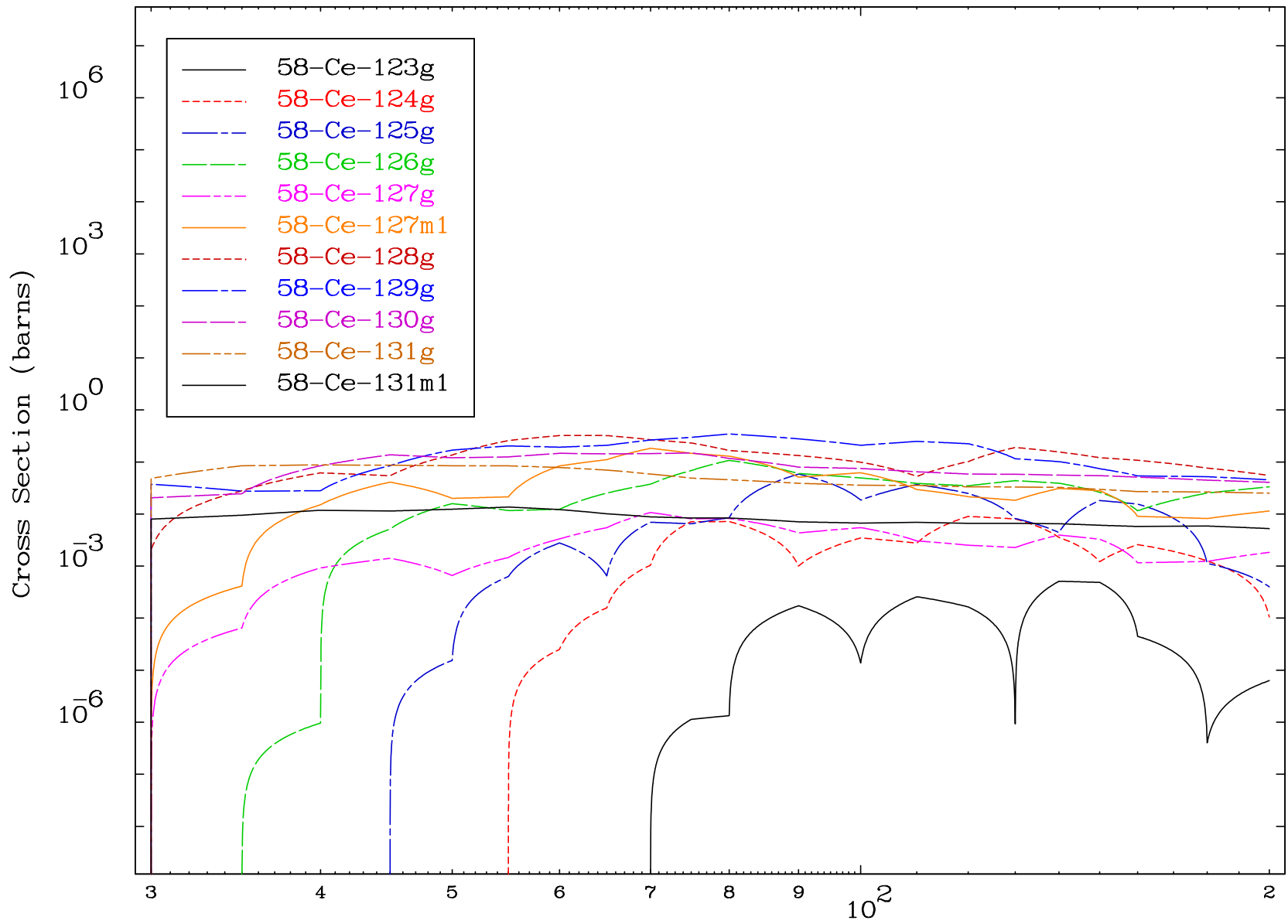
Radionuclide Production Cross Section



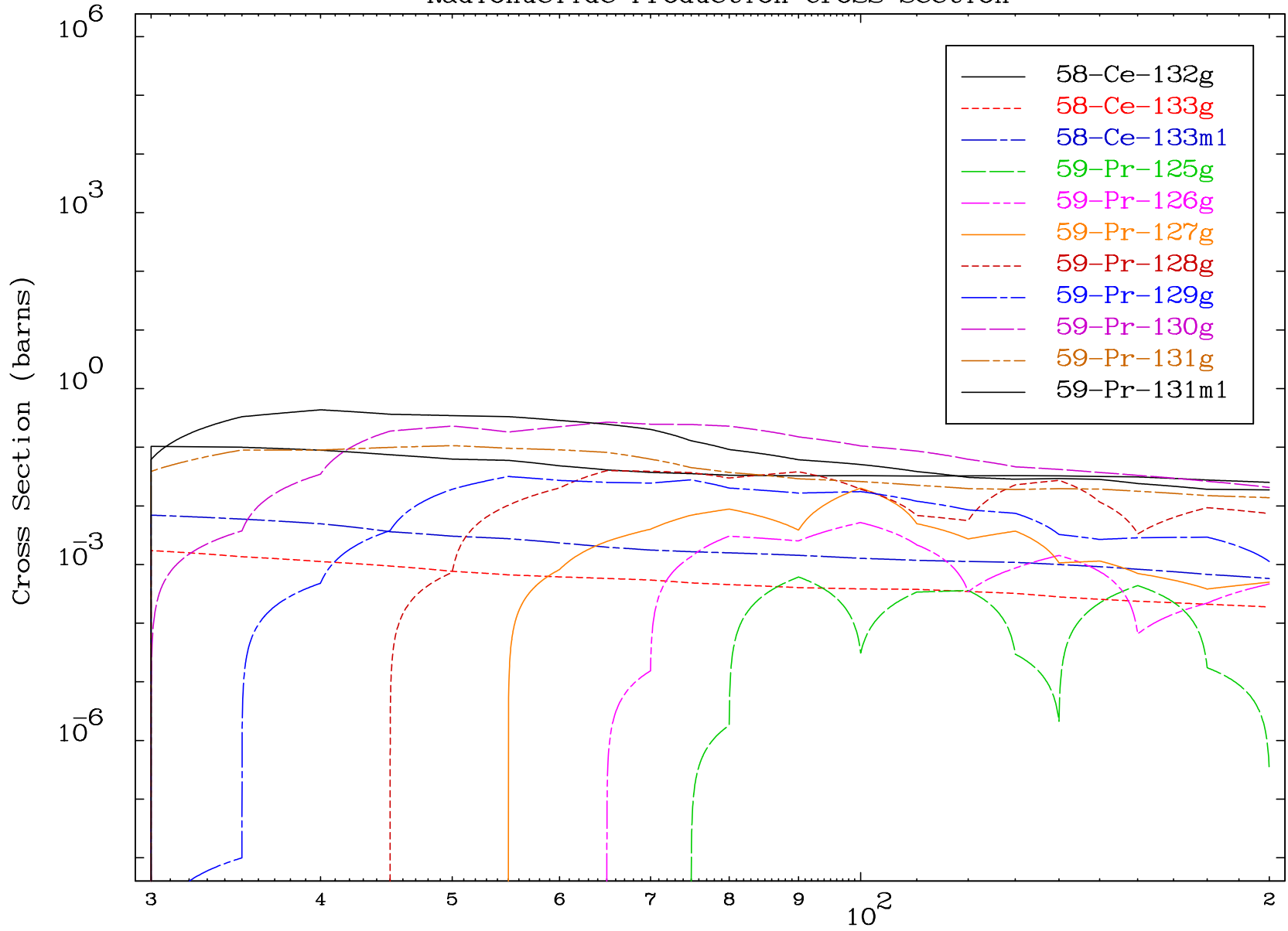
Radionuclide Production Cross Section



Radionuclide Production Cross Section



Radionuclide Production Cross Section

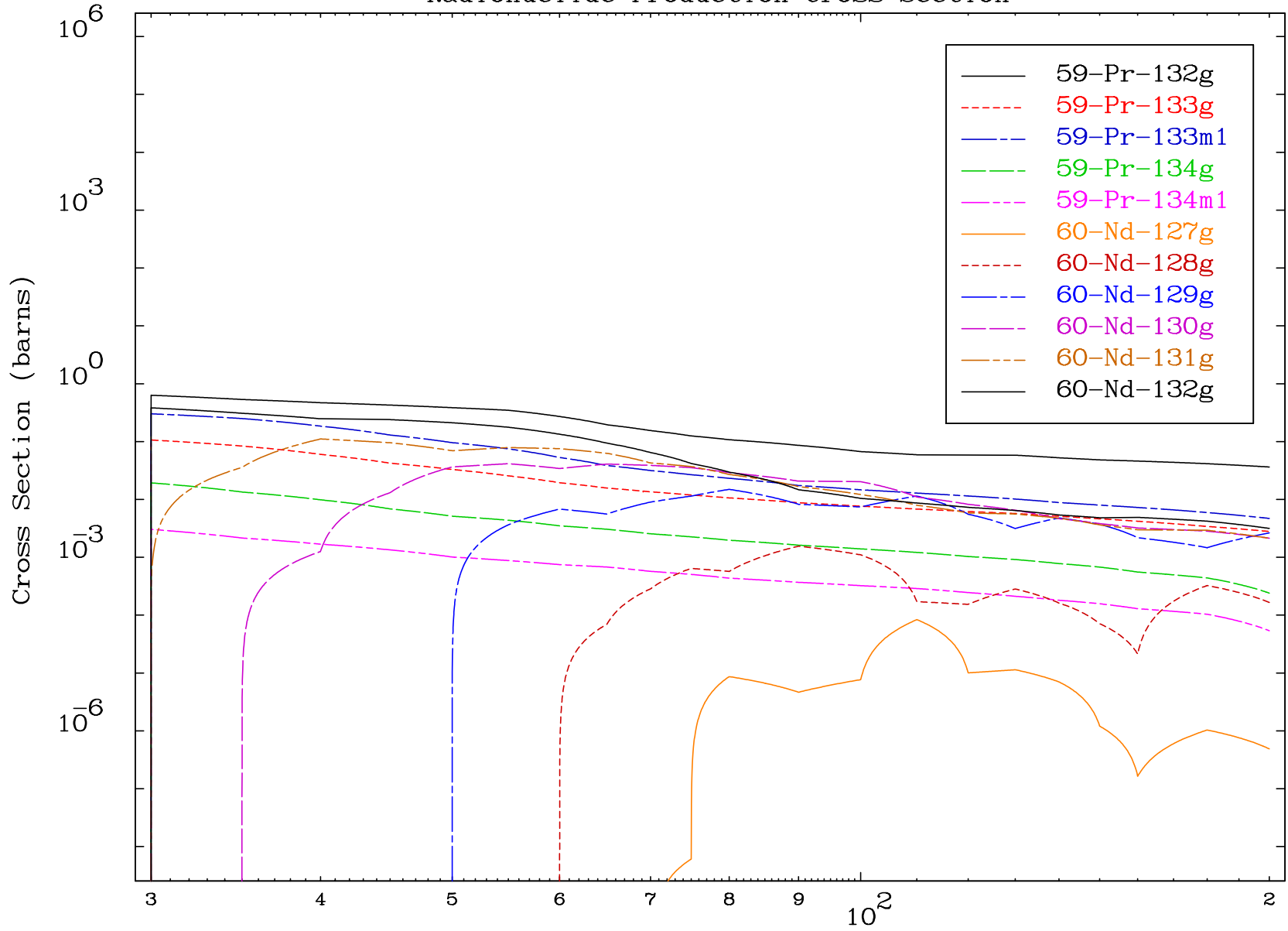


MAT 5902

(d,remainder)

59-Pr-133

Radionuclide Production Cross Section

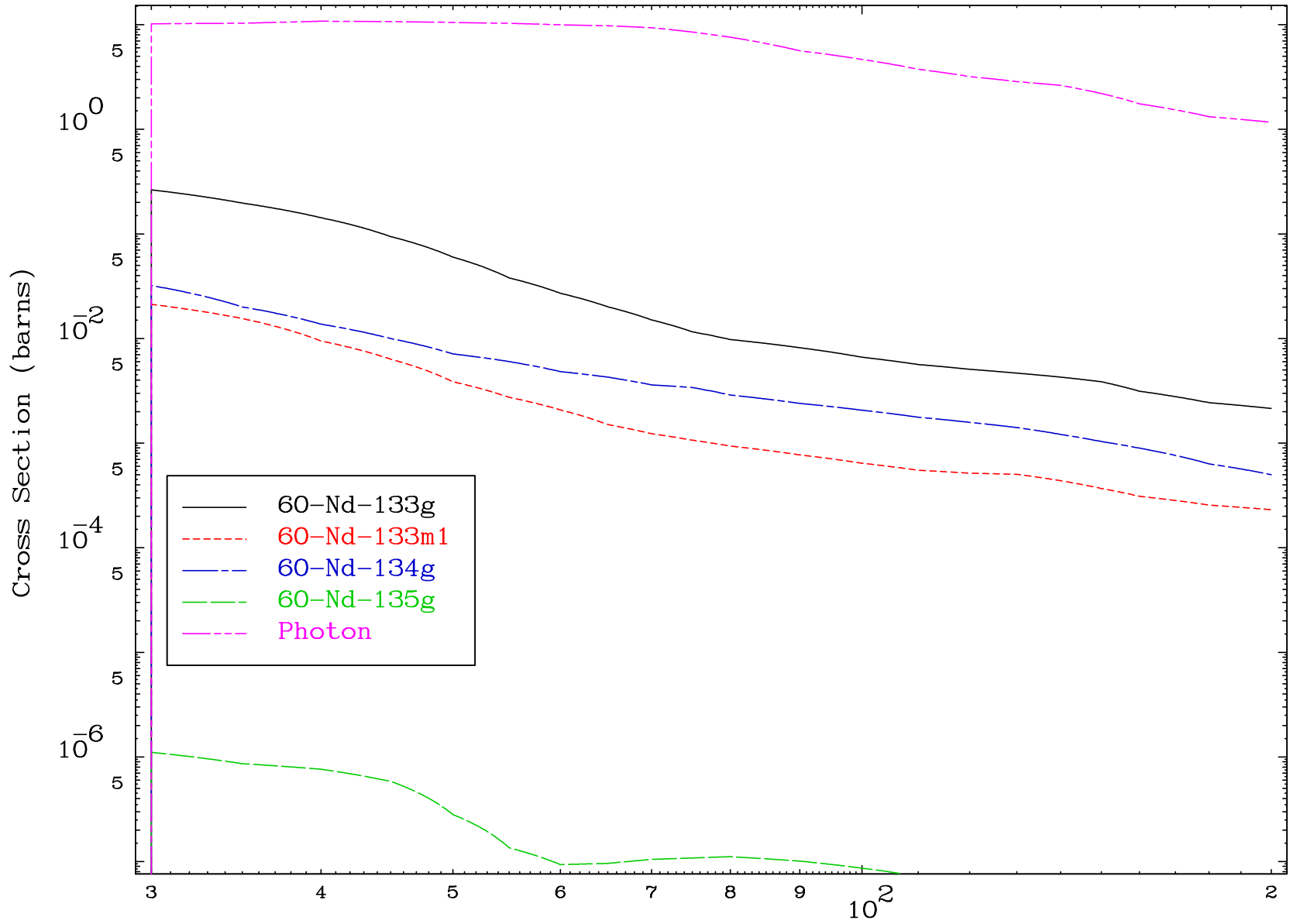


23

Incident Energy (MeV)

59-Pr-133

Radionuclide Production Cross Section

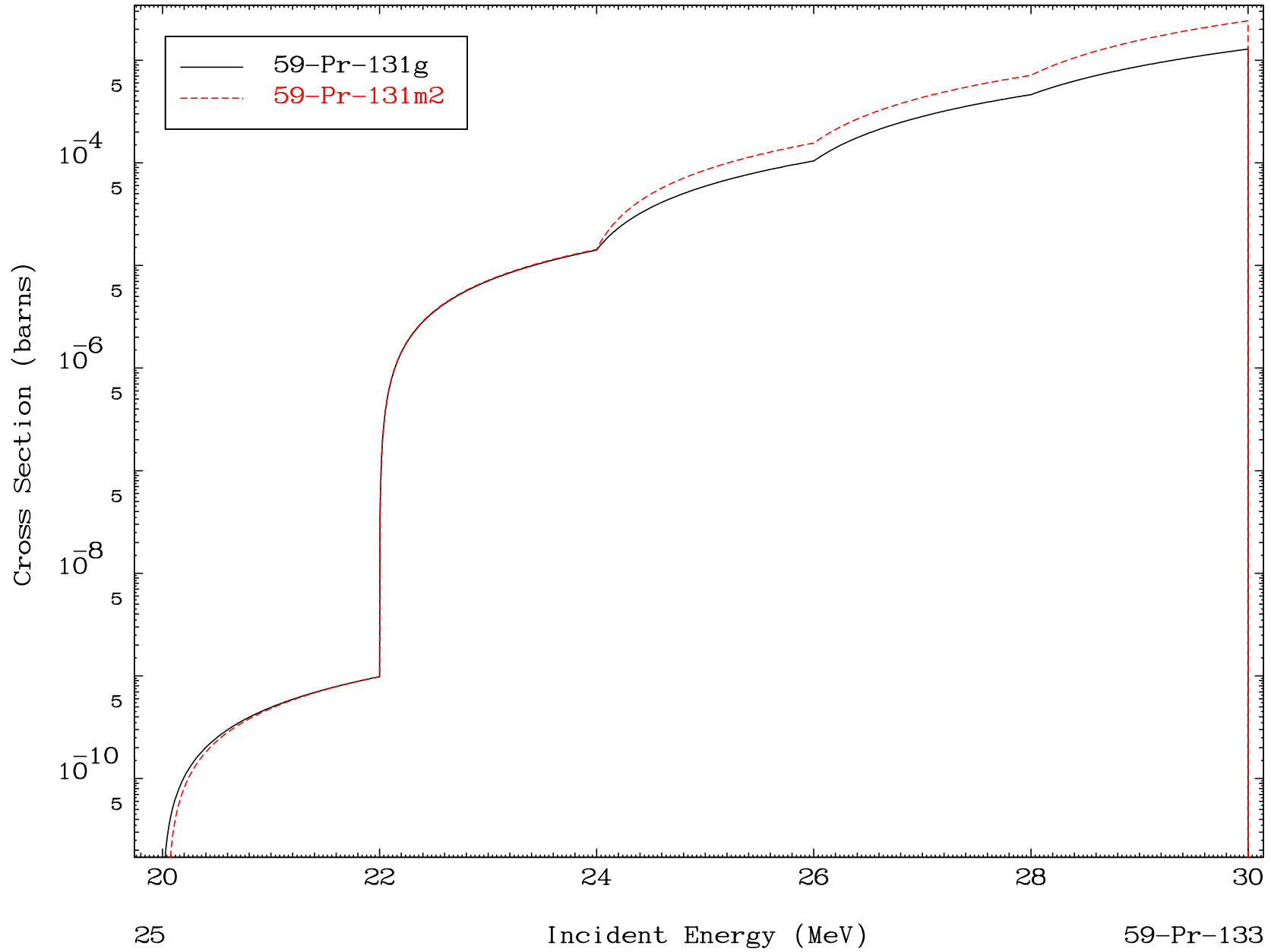


MAT 5902

(d,2n) d

59-Pr-133

Radionuclide Production Cross Section



25

Incident Energy (MeV)

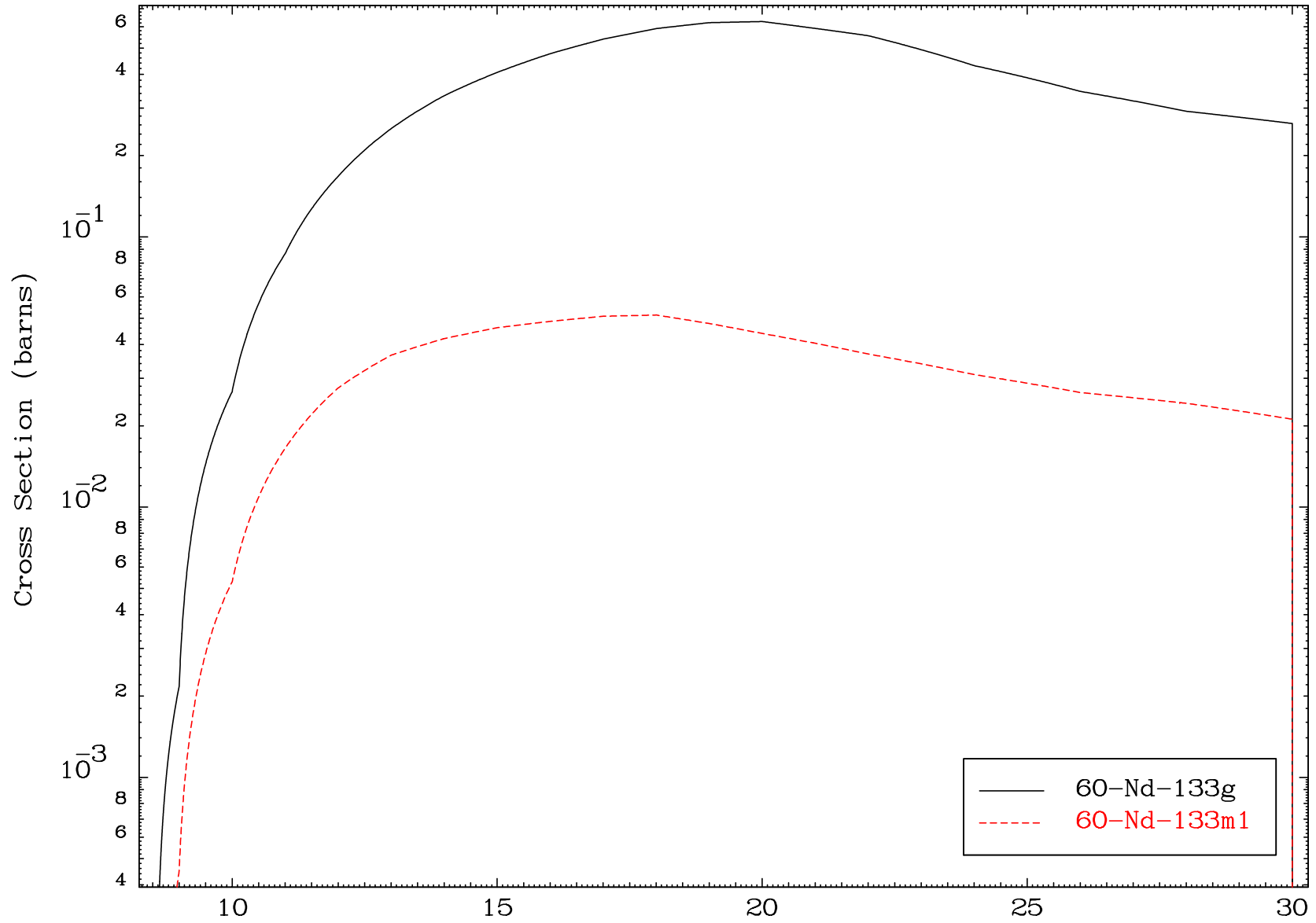
59-Pr-133

MAT 5902

(d,2n)

59-Pr-133

Radionuclide Production Cross Section

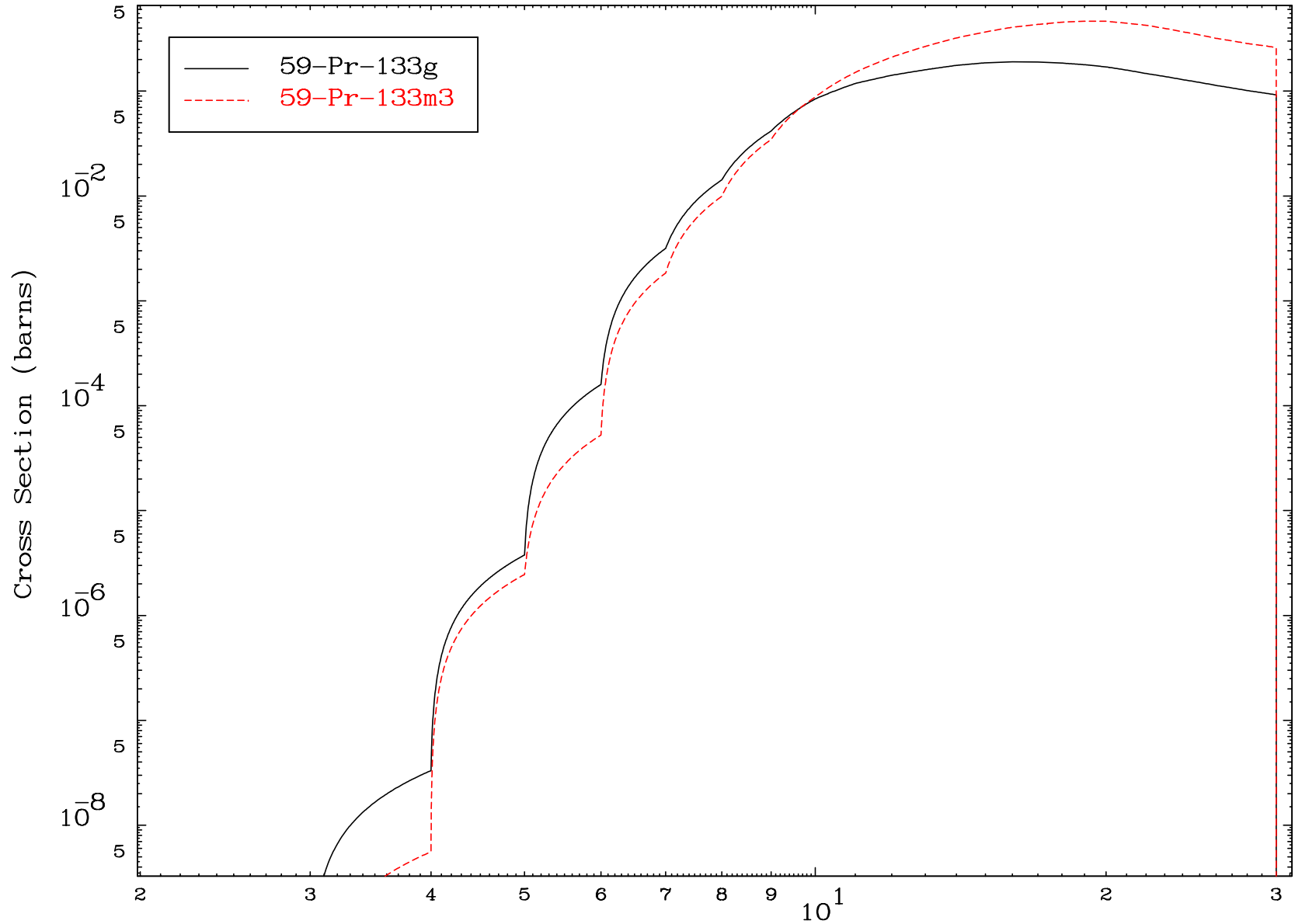


26

Incident Energy (MeV)

59-Pr-133

Radionuclide Production Cross Section

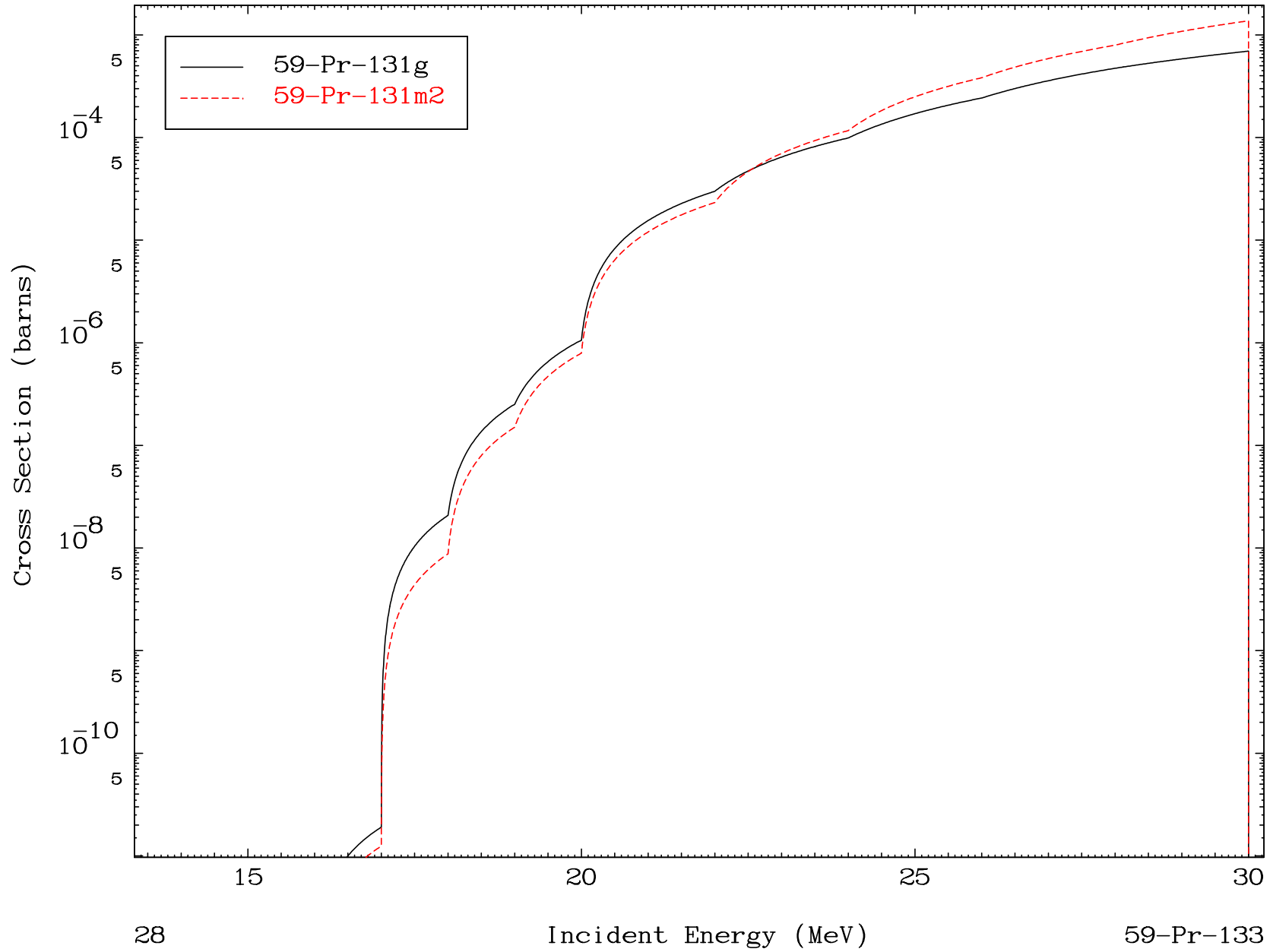


MAT 5902

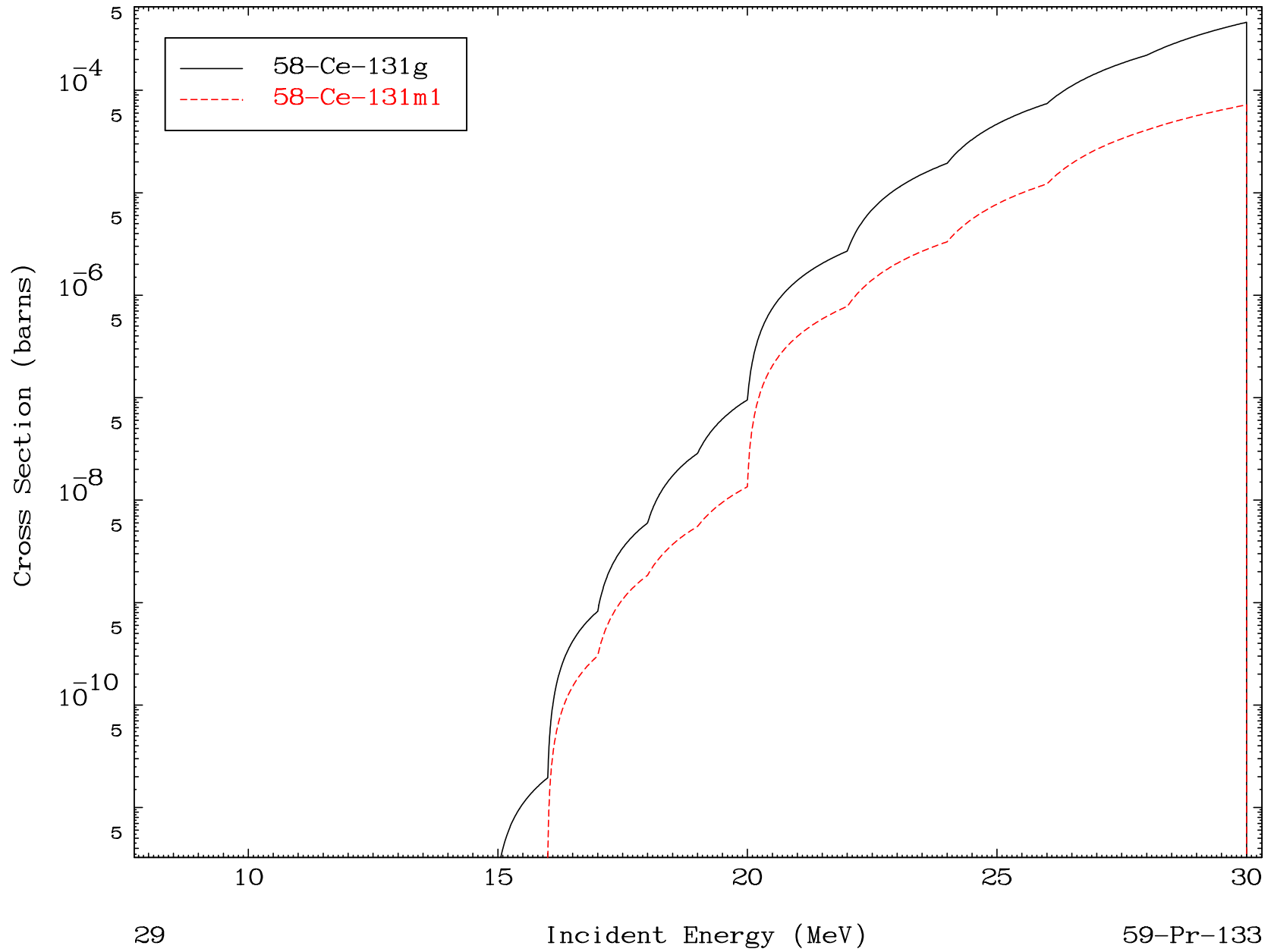
(d,n') t

59-Pr-133

Radionuclide Production Cross Section



Radionuclide Production Cross Section

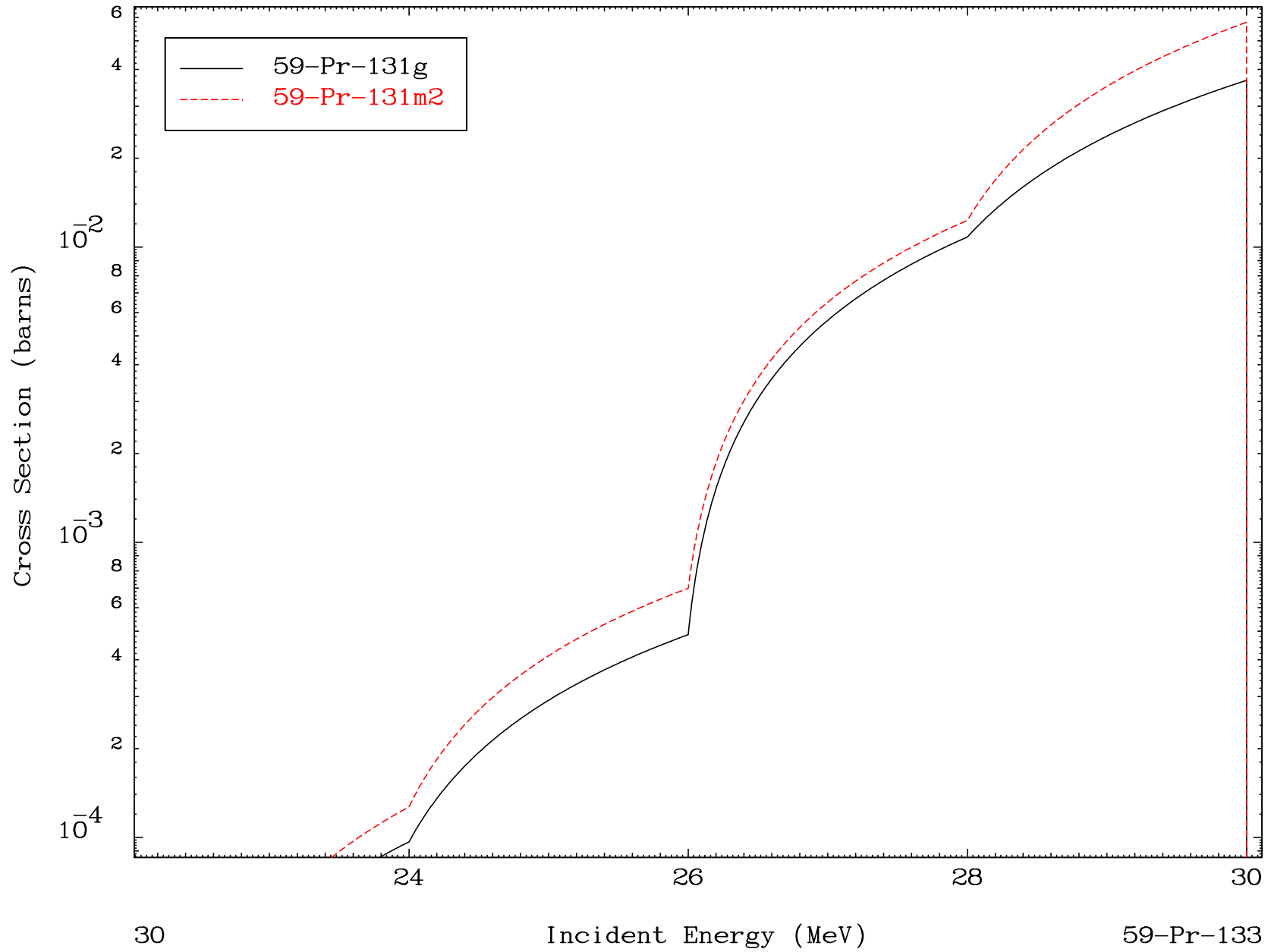


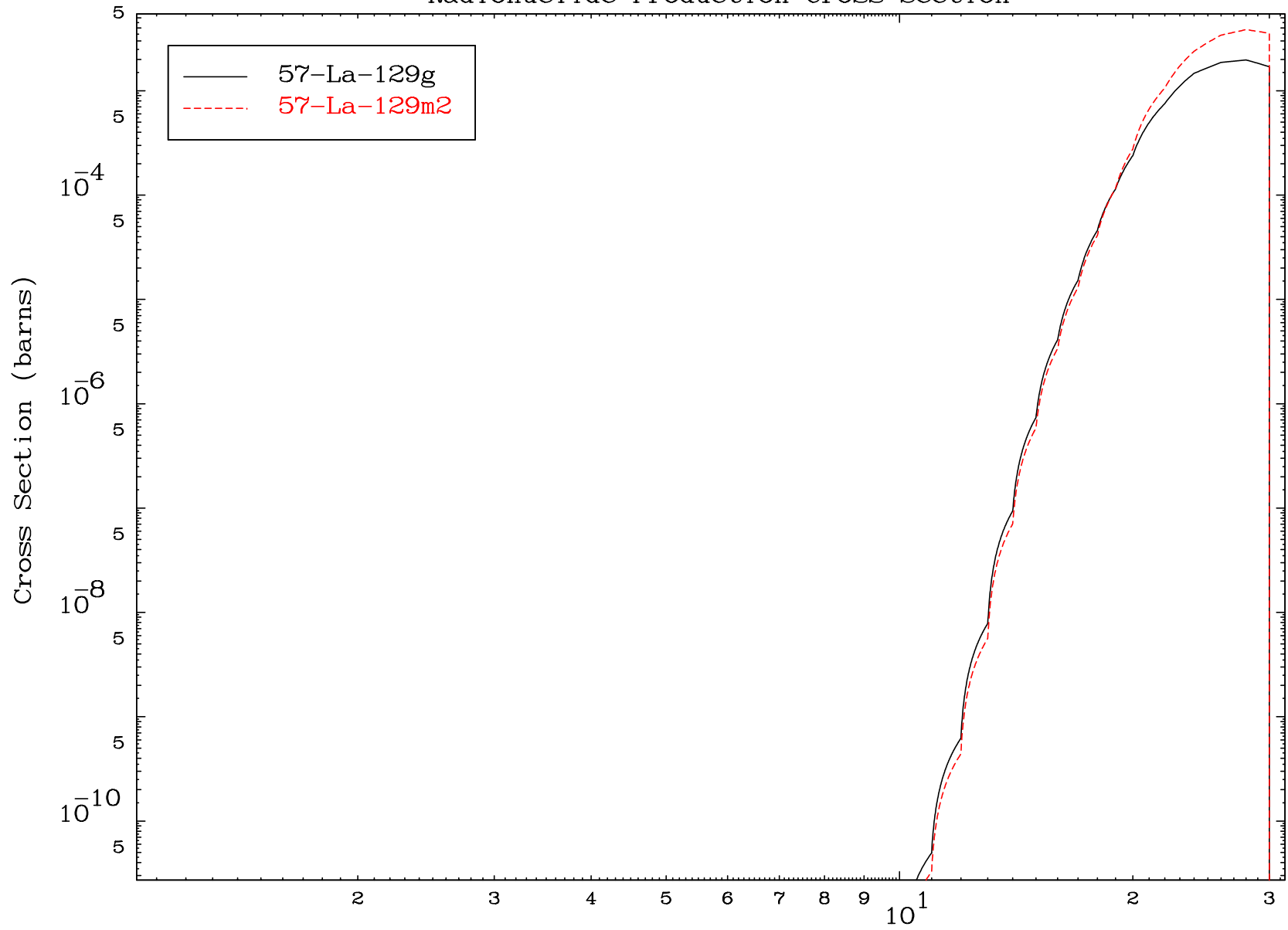
MAT 5902

(d,3n) p

59-Pr-133

Radionuclide Production Cross Section



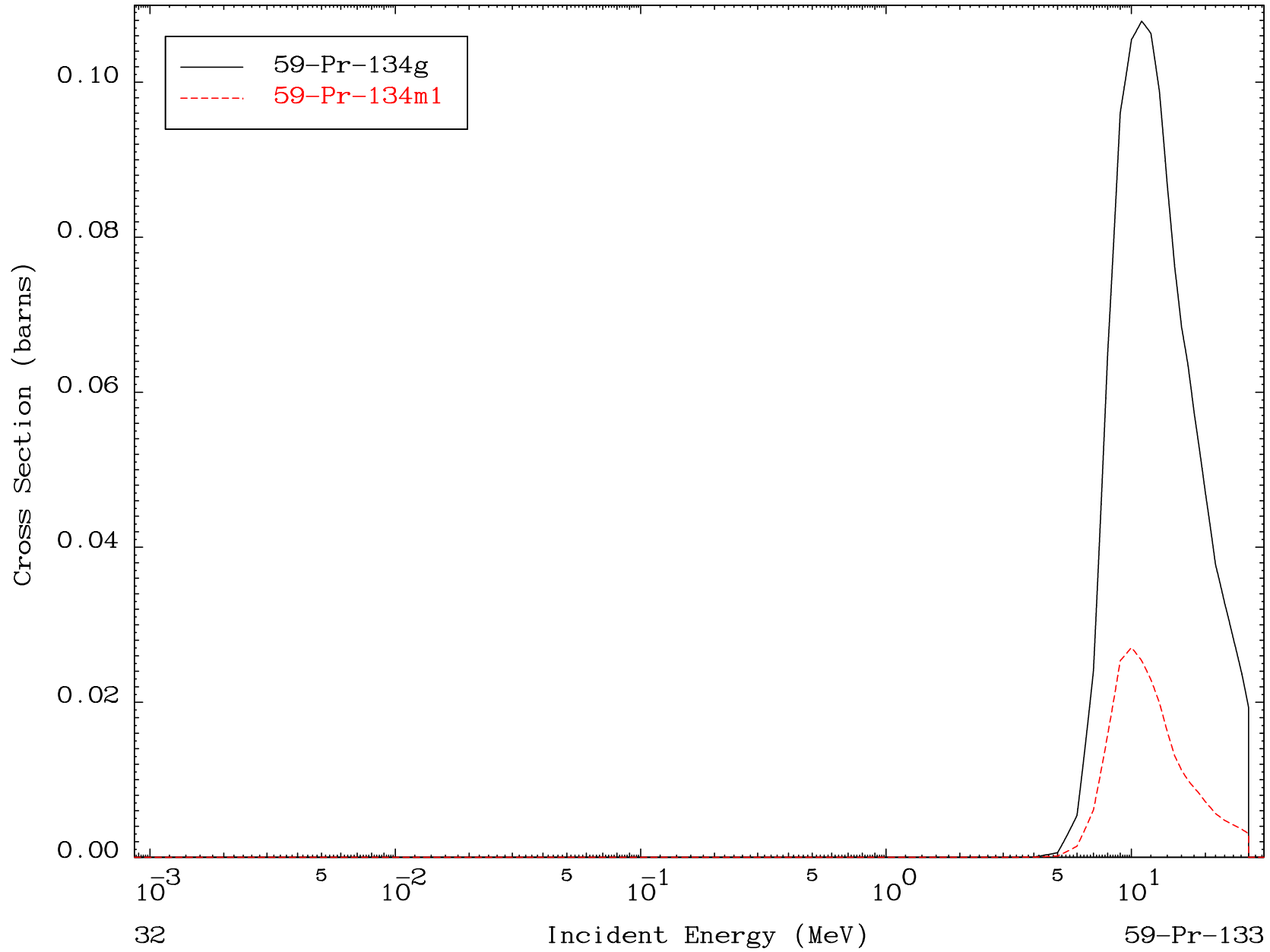


MAT 5902

(d,p)

59-Pr-133

Radionuclide Production Cross Section



32

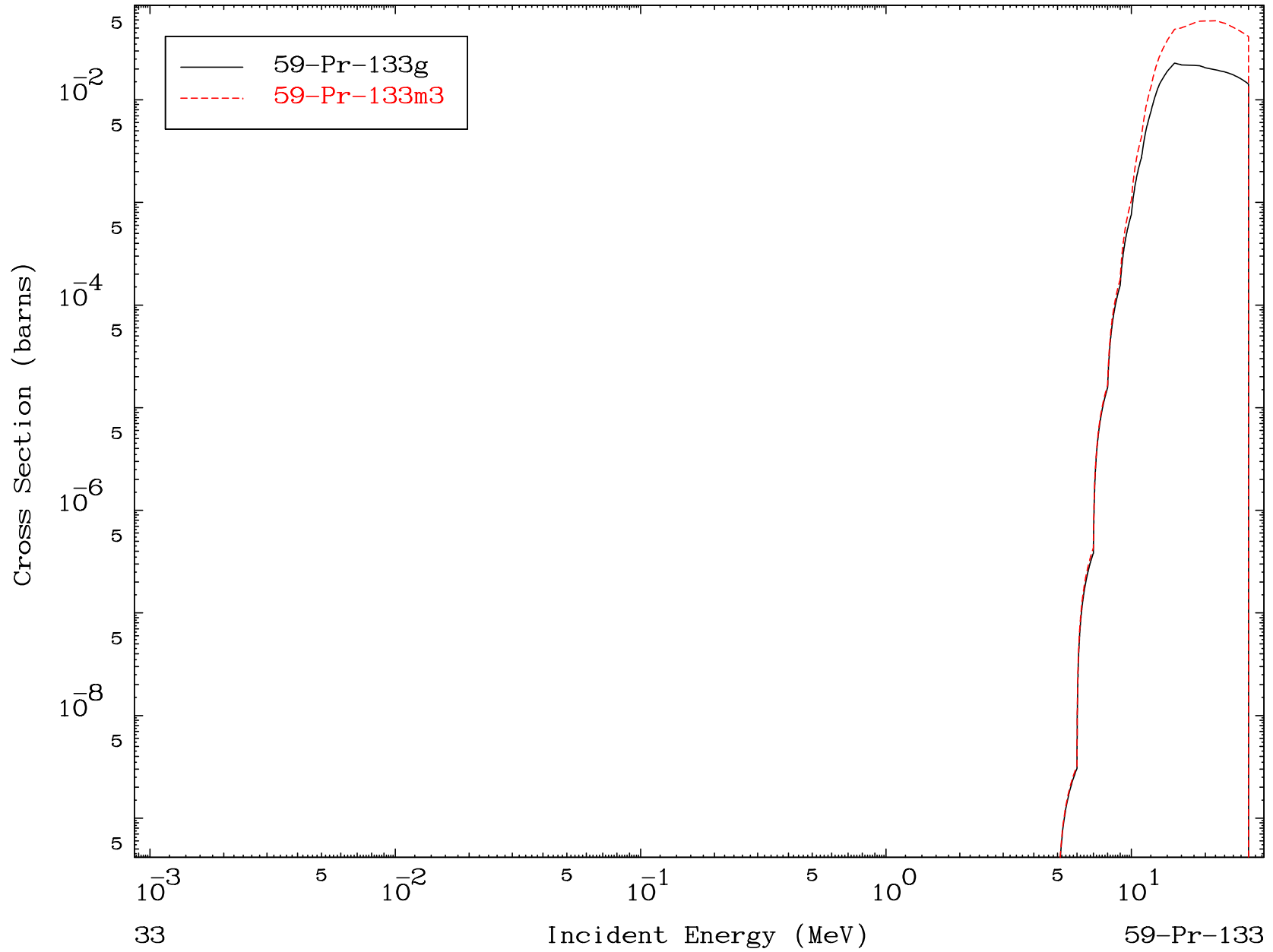
59-Pr-133

MAT 5902

(d,d)

59-Pr-133

Radionuclide Production Cross Section

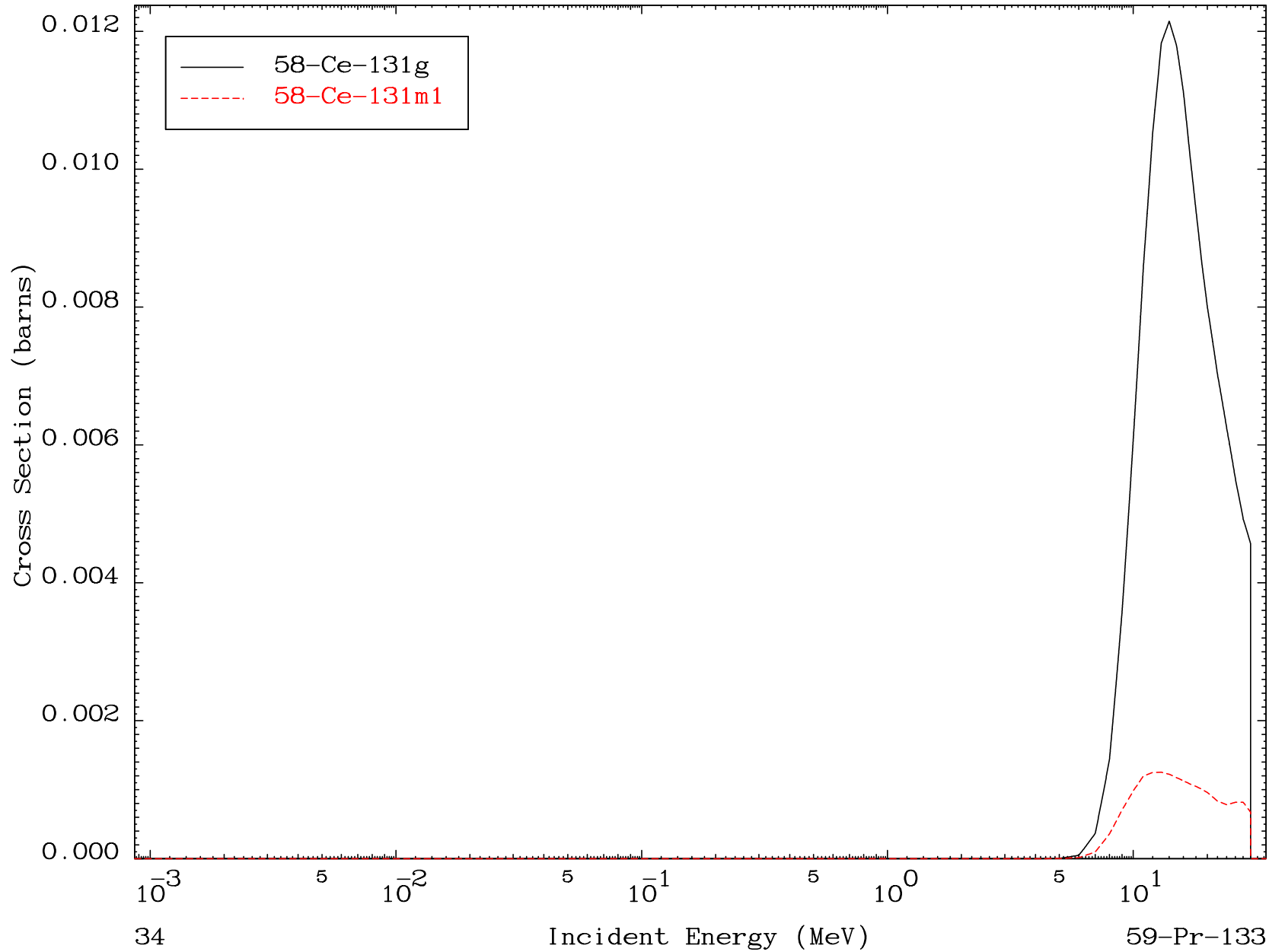


MAT 5902

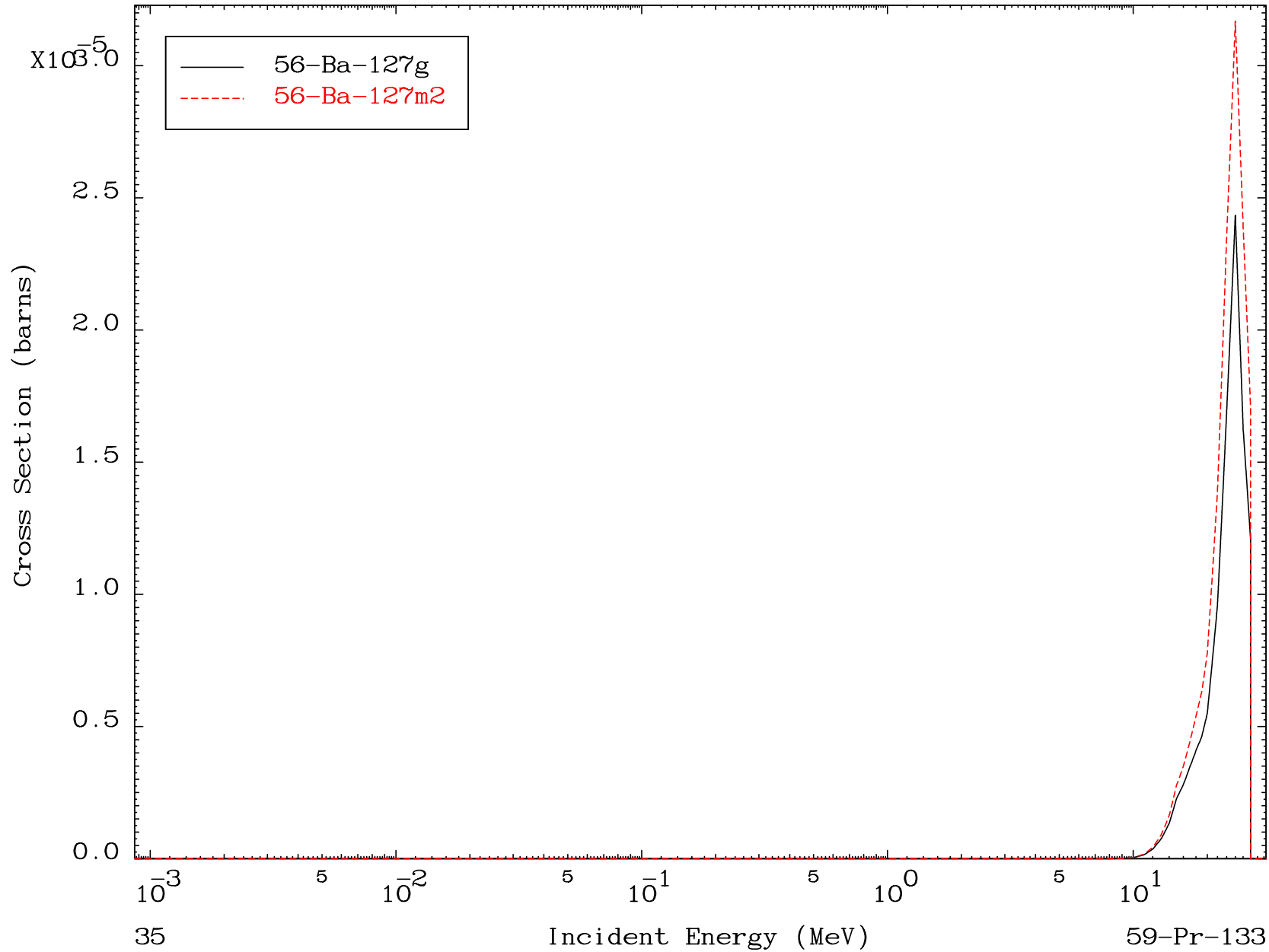
(d, α)

59-Pr-133

Radionuclide Production Cross Section



Radionuclide Production Cross Section

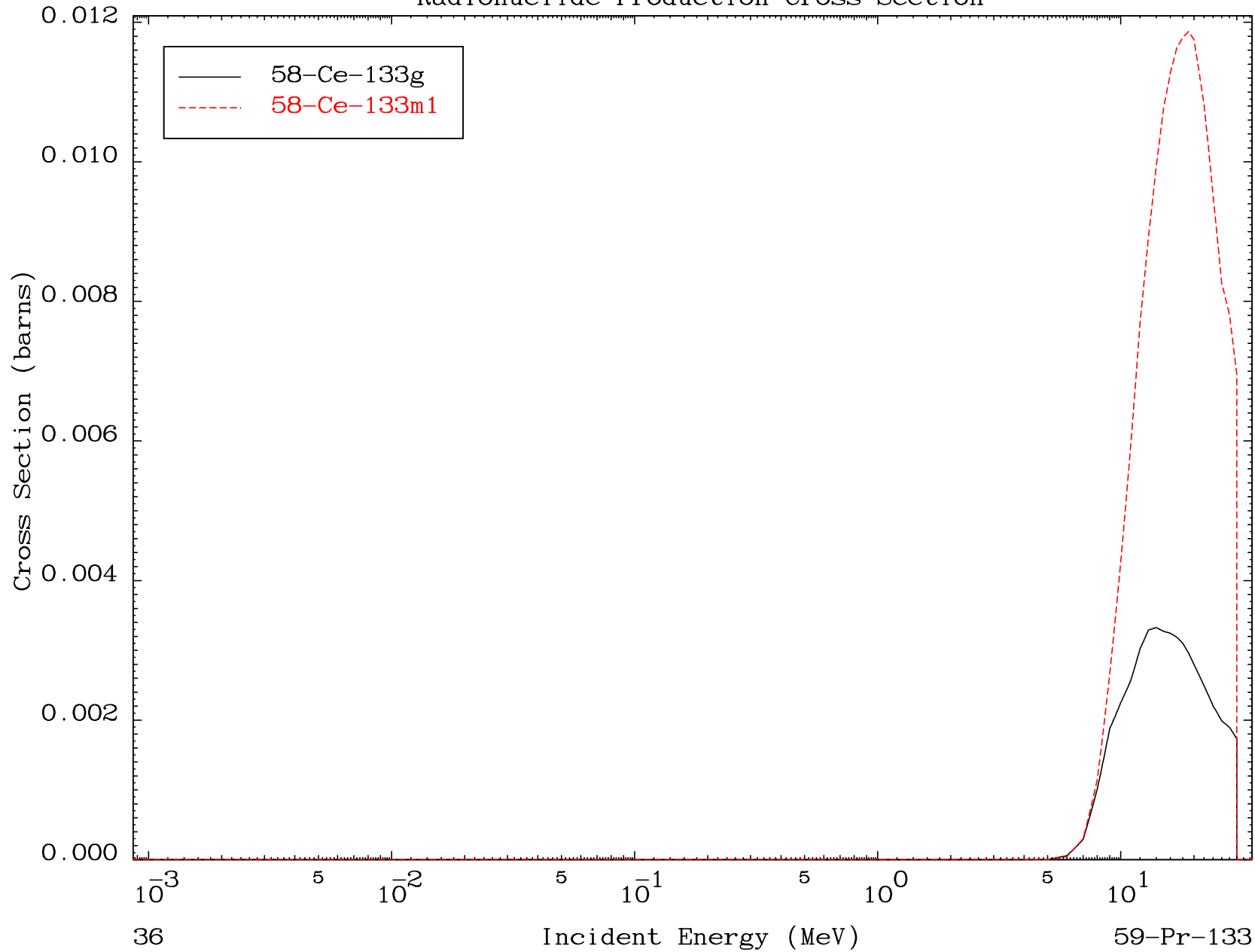


MAT 5902

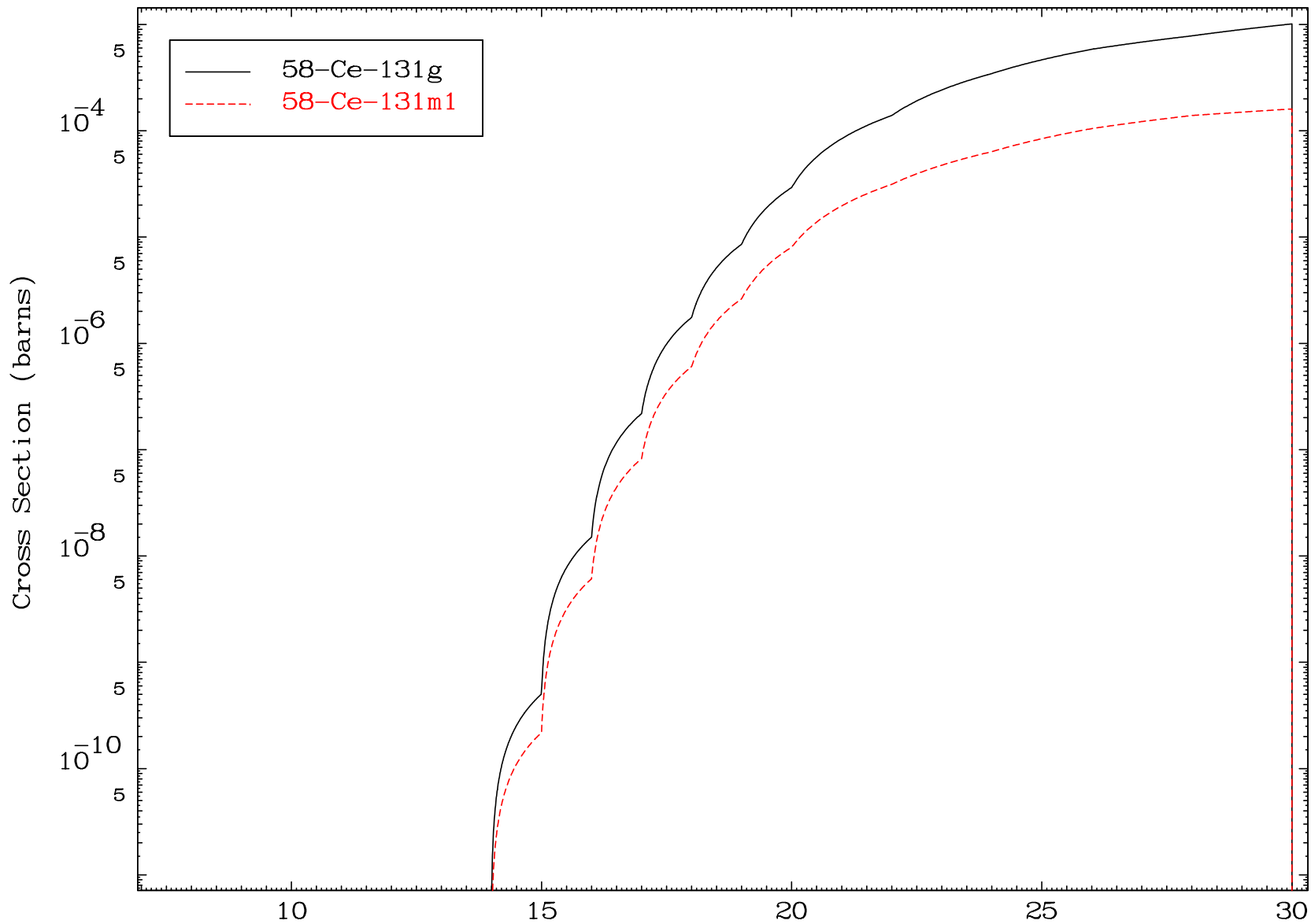
(d,2p)

59-Pr-133

Radionuclide Production Cross Section



Radionuclide Production Cross Section



MAT 5902

(d,d) α

59-Pr-133

Radionuclide Production Cross Section

