

Program EVALPLOT
(Version 2018-1)

by

Dermott E. Cullen
(Present Contact Information)

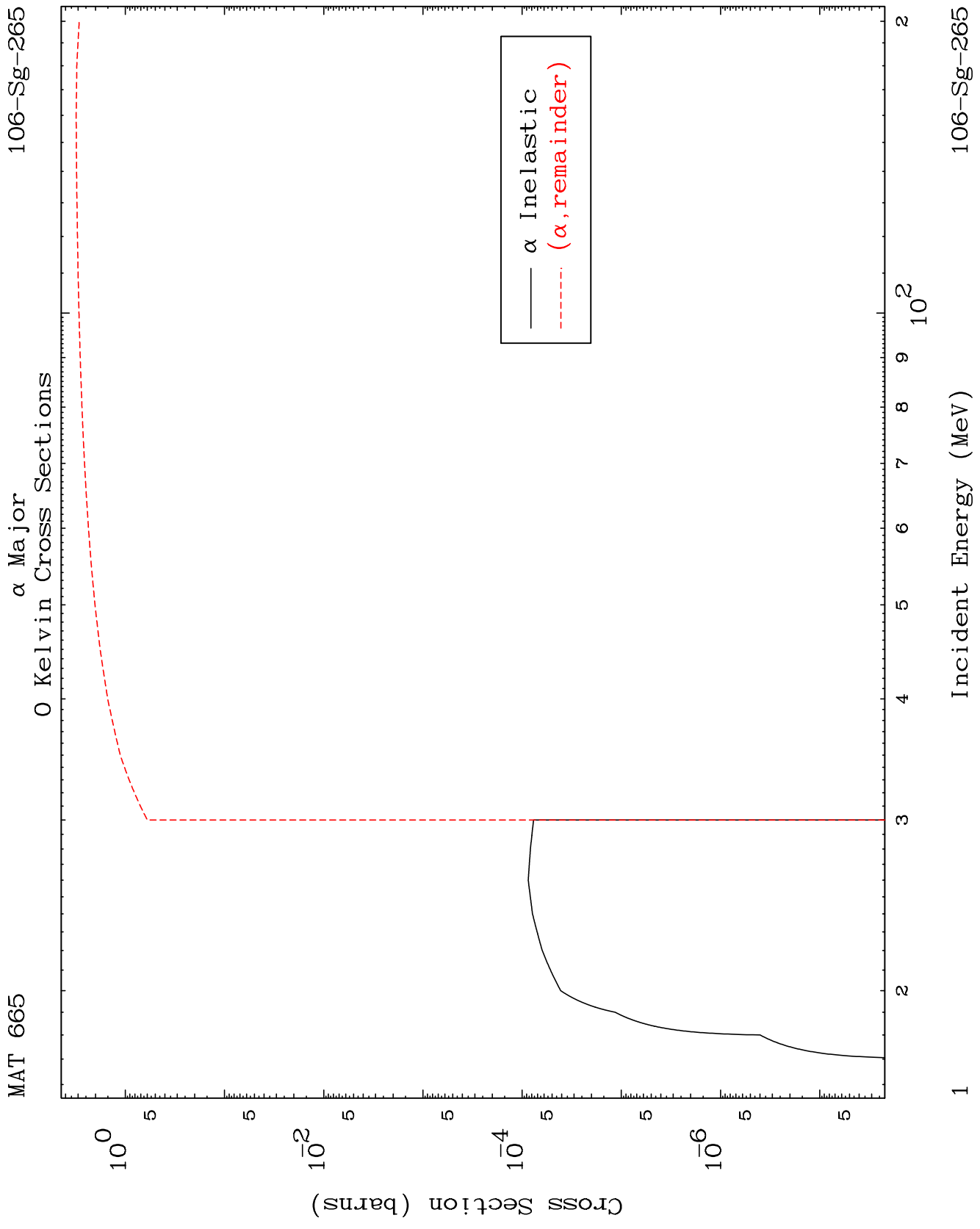
Dermott E. Cullen
1466 Hudson Way
Livermore, CA 94550
U.S.A.

Tele: 925-443-1911

E.Mail:redcullen1@comcast.net

Web:redcullen1.net/HOMEPAGE.NEW

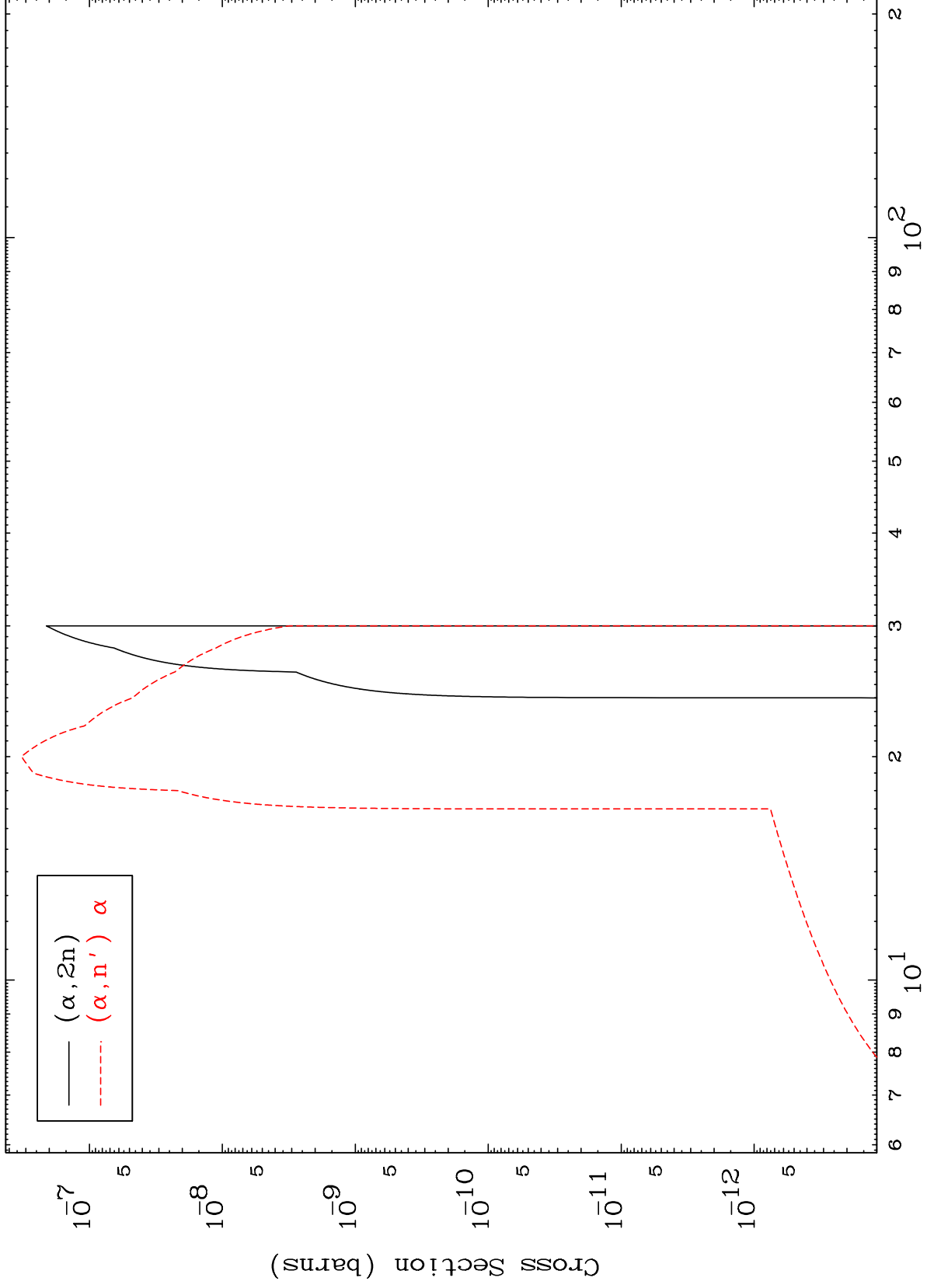
Press Mouse Button to Start



MAT 665

α Neutron Production
0 Kelvin Cross Sections

106-Sg-265



2

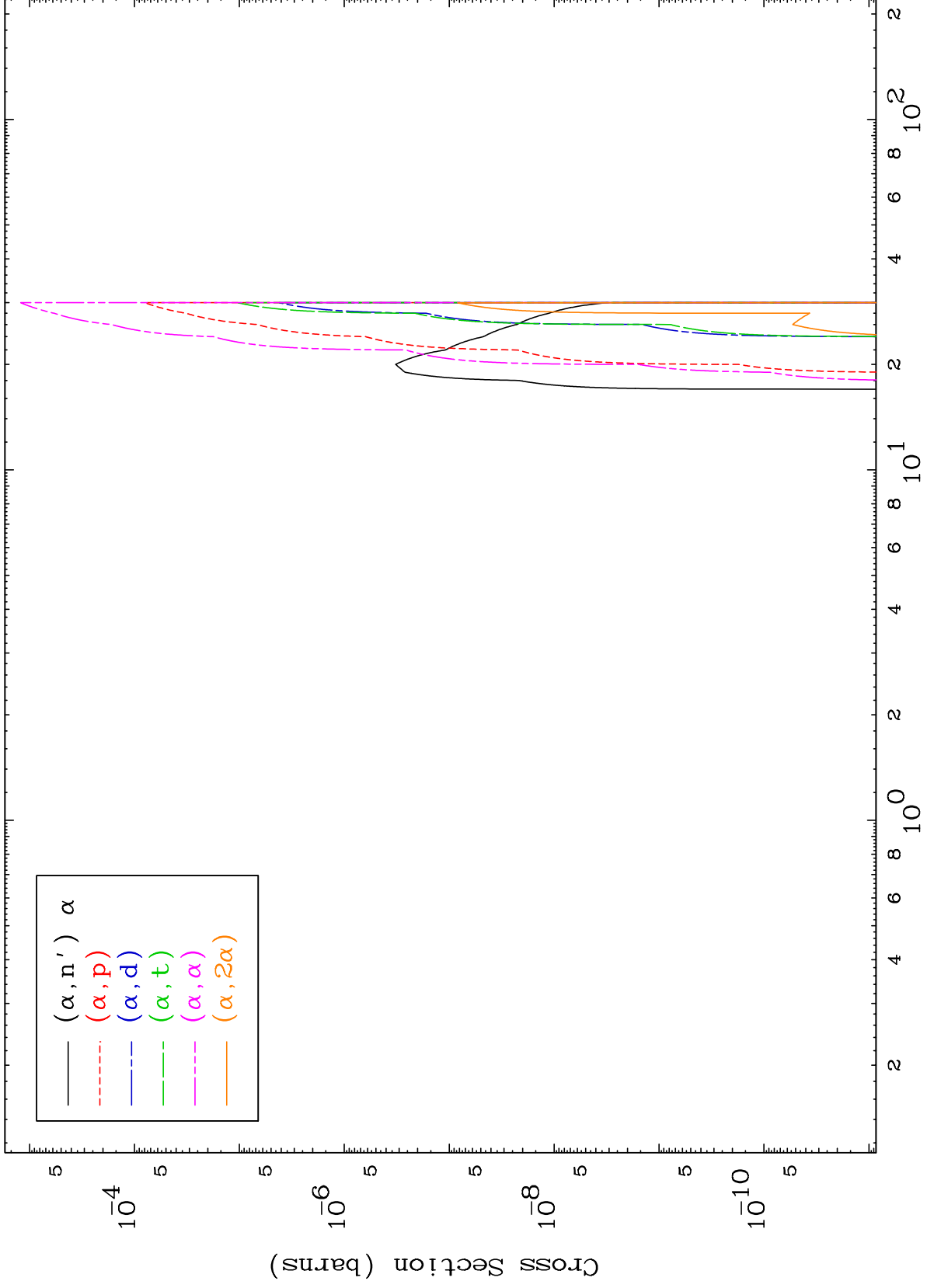
Incident Energy (MeV)

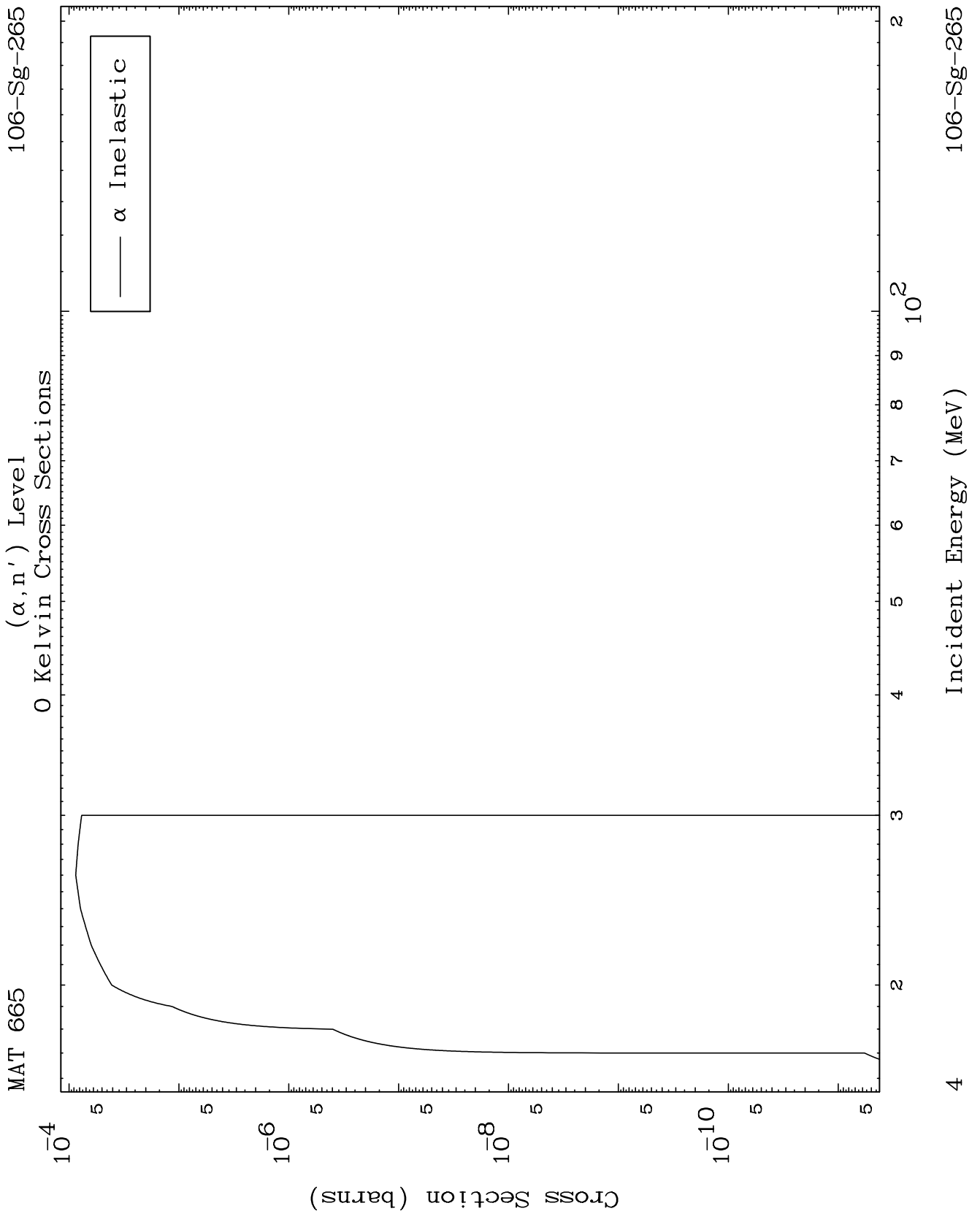
106-Sg-265

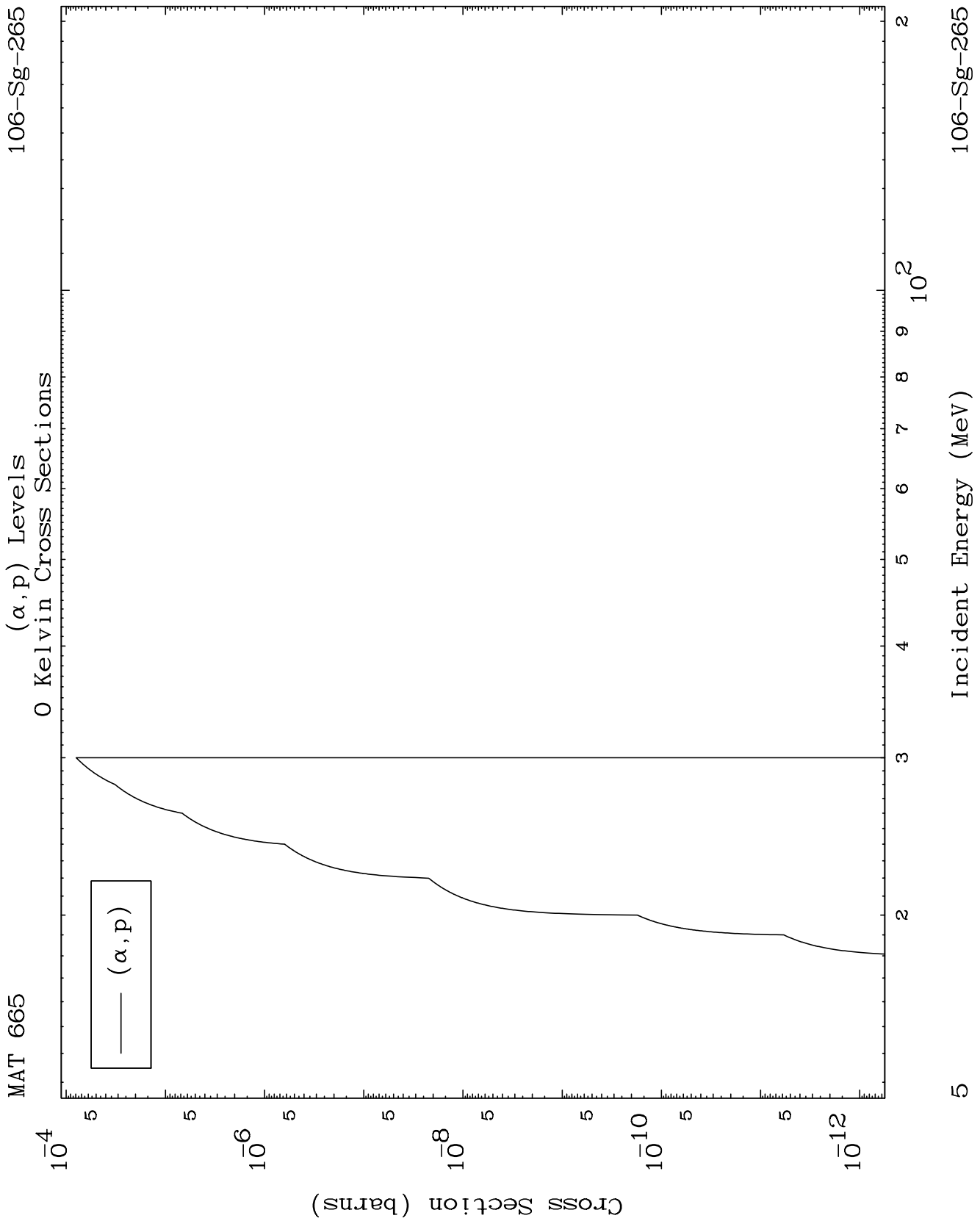
MAT 665

α Charged Particle
0 Kelvin Cross Sections

106-Sg-265





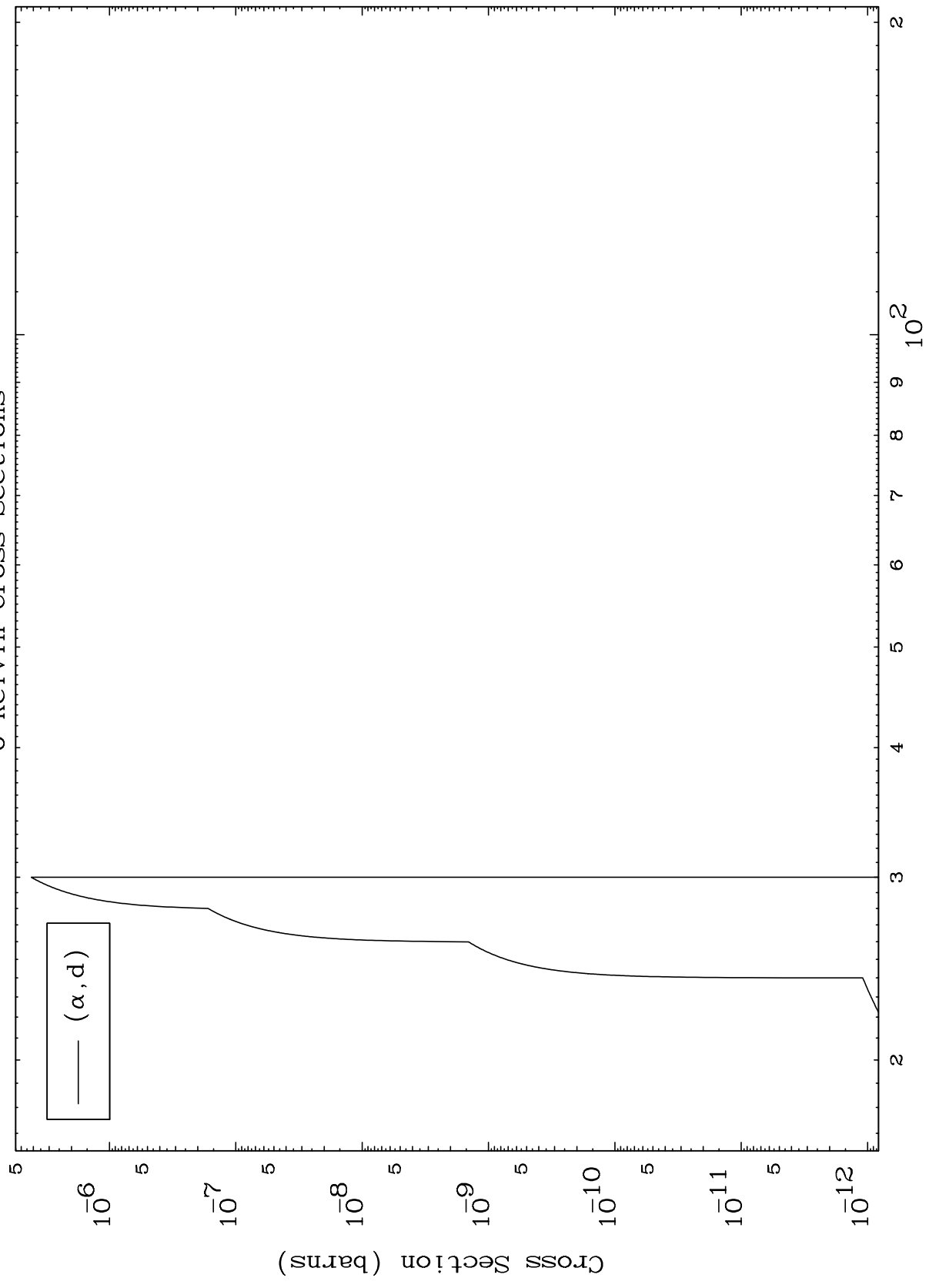


MAT 665

(α, d) Levels

106-Sg-265

0 Kelvin Cross Sections



6

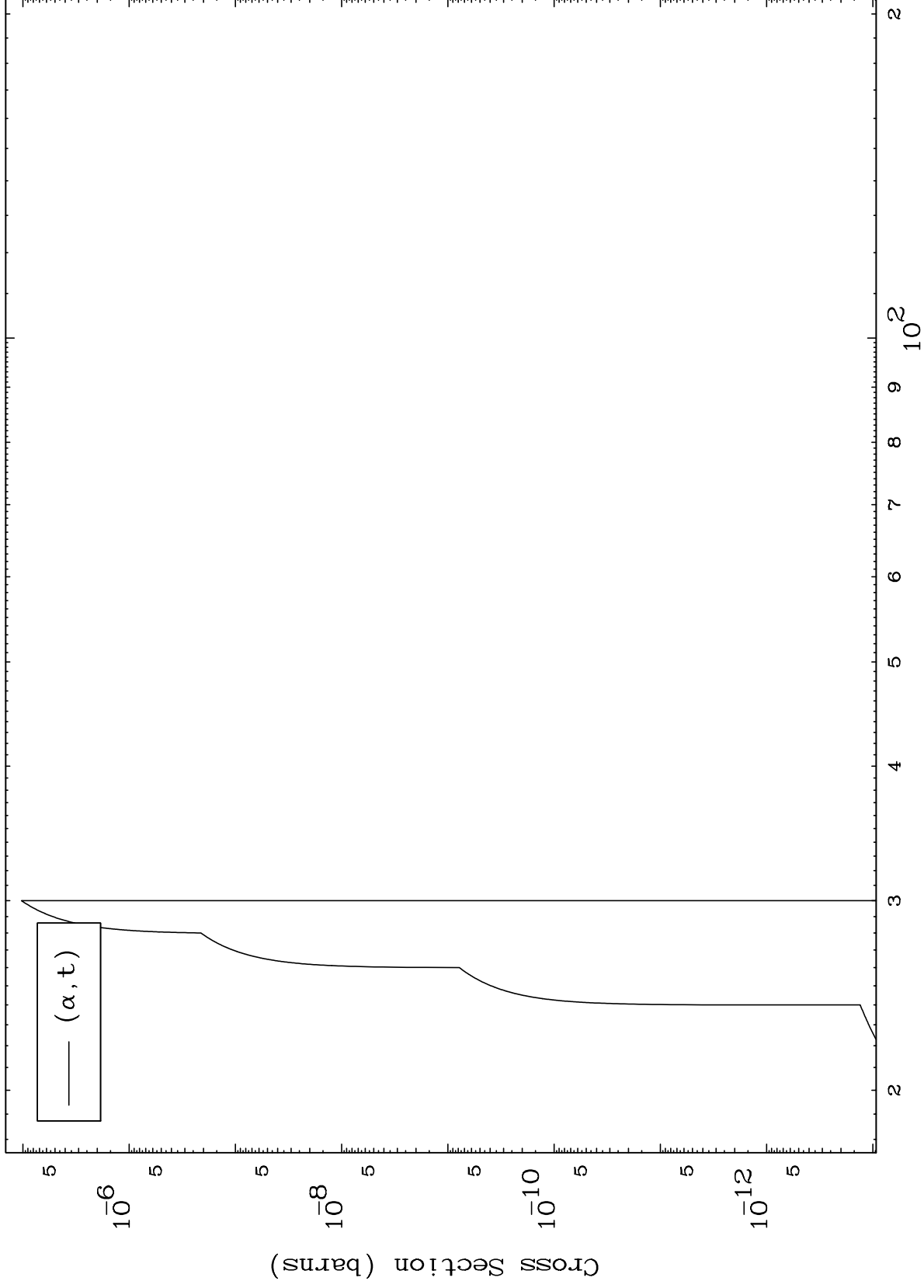
Incident Energy (MeV)

106-Sg-265

MAT 665

(α, t) Levels
0 Kelvin Cross Sections

106-Sg-265



7

Incident Energy (MeV)

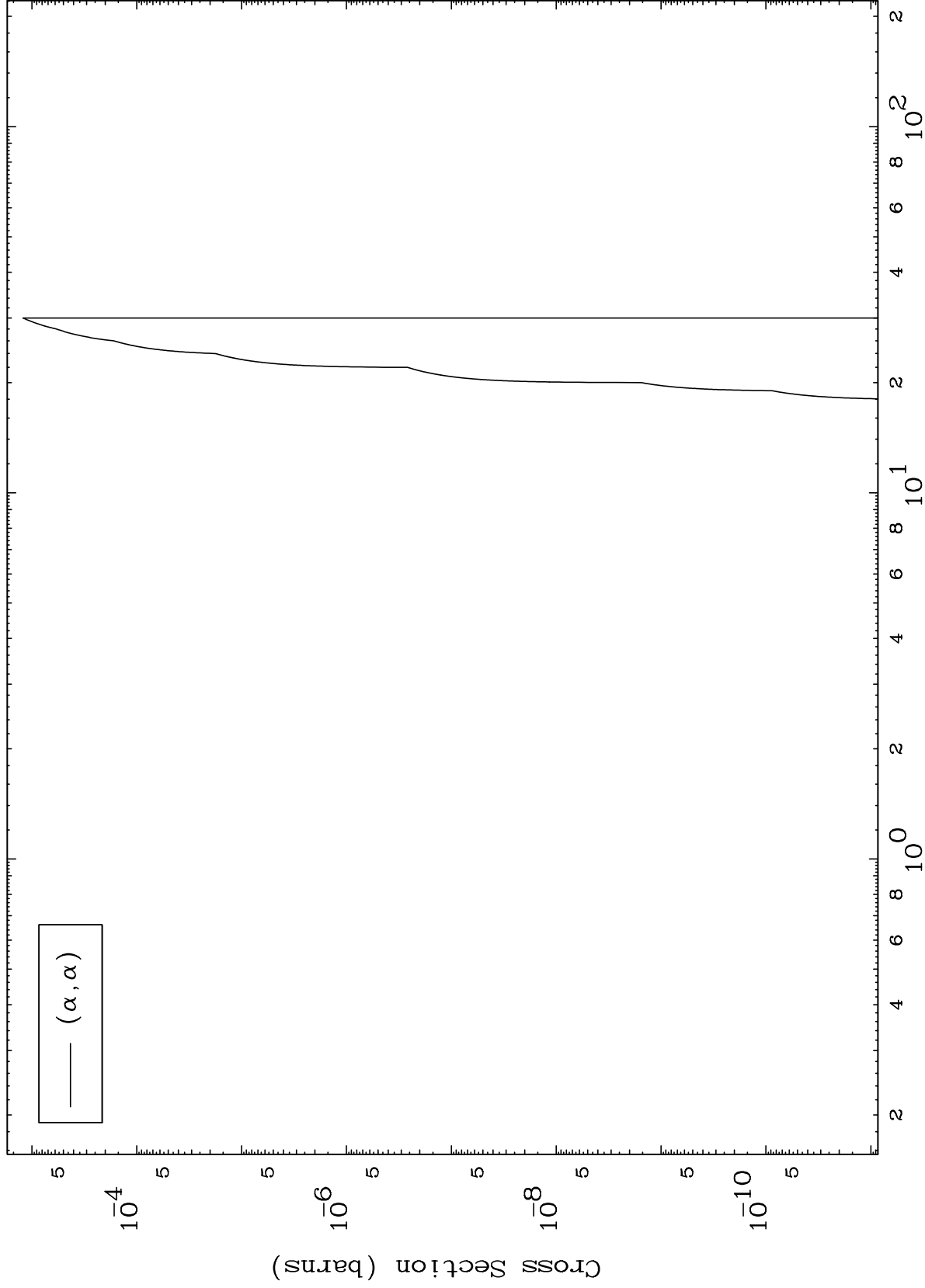
106-Sg-265

MAT 665

(α, α) Levels

106-Sg-265

0 Kelvin Cross Sections



8

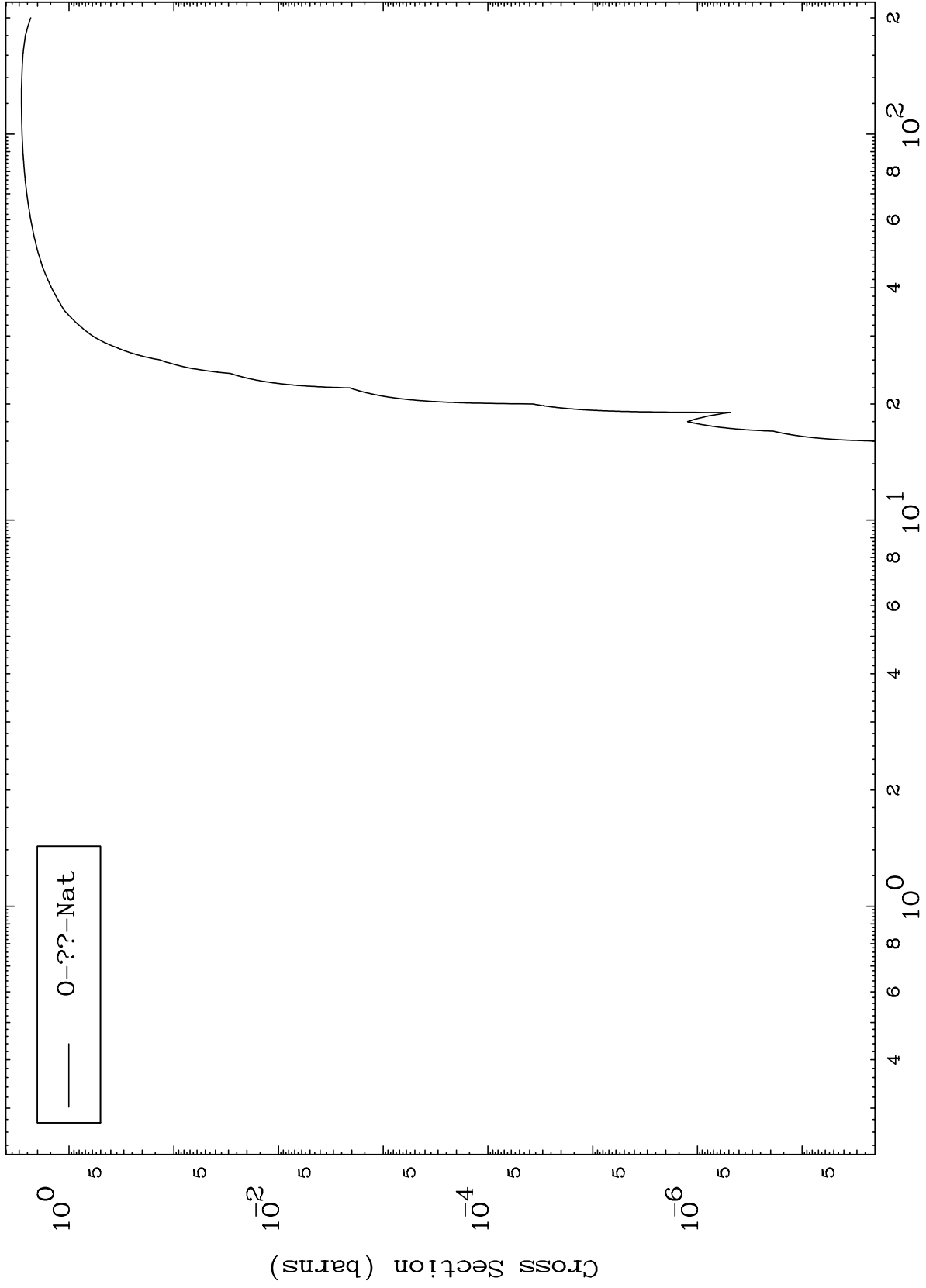
Incident Energy (MeV)

106-Sg-265

MAT 665

106-Sg-265

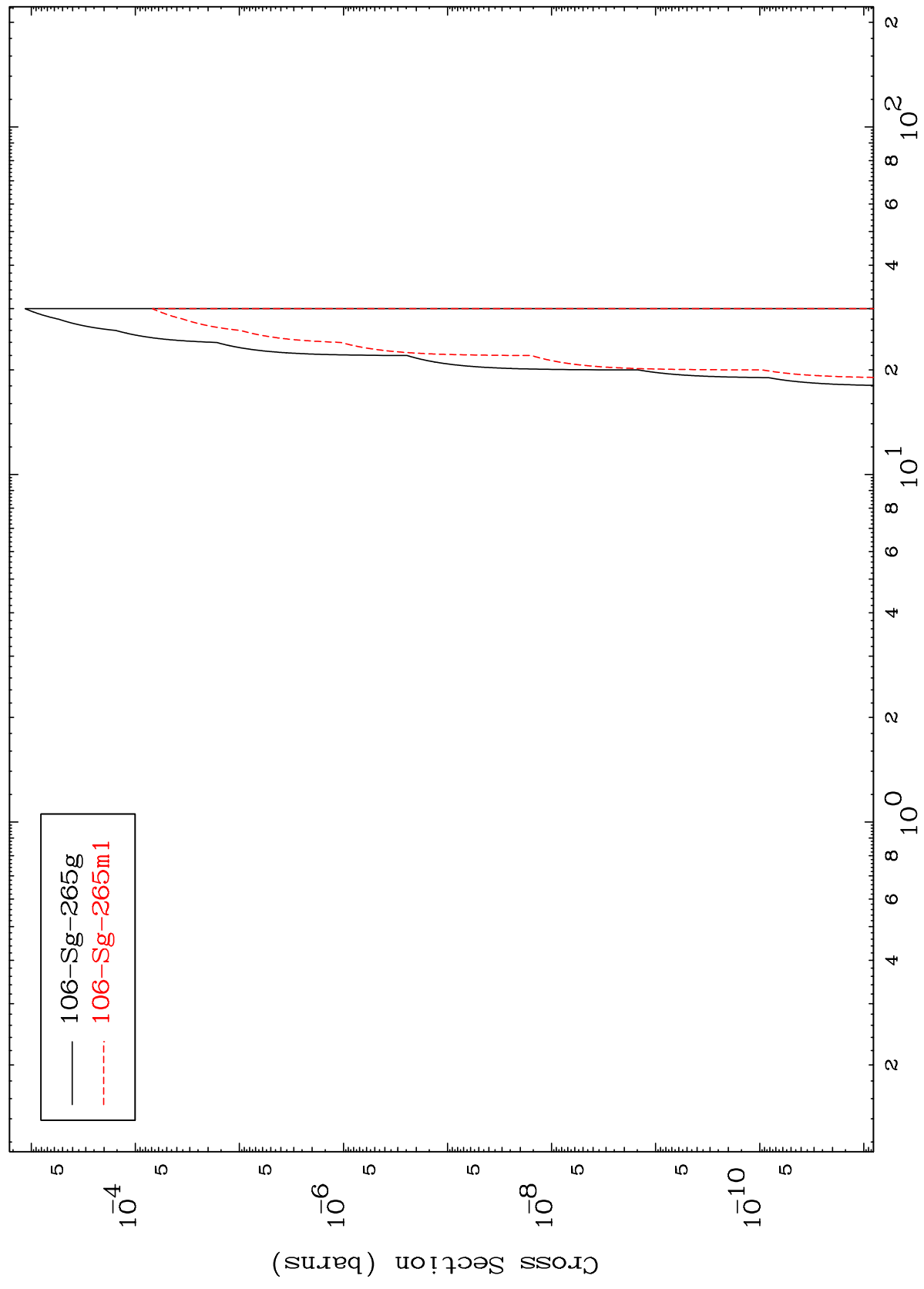
α Fission
Radionuclide Production Cross Section



MAT 665

106-Sg-265

Radionuclide Production Cross Section
(α, α)



10

106-Sg-265

Incident Energy (MeV)

MAT 665

$(\alpha, 2\alpha)$

106-Sg-265

Radionuclide Production Cross Section

