

Program EVALPLOT
(Version 2018-1)

by

Dermott E. Cullen
(Present Contact Information)

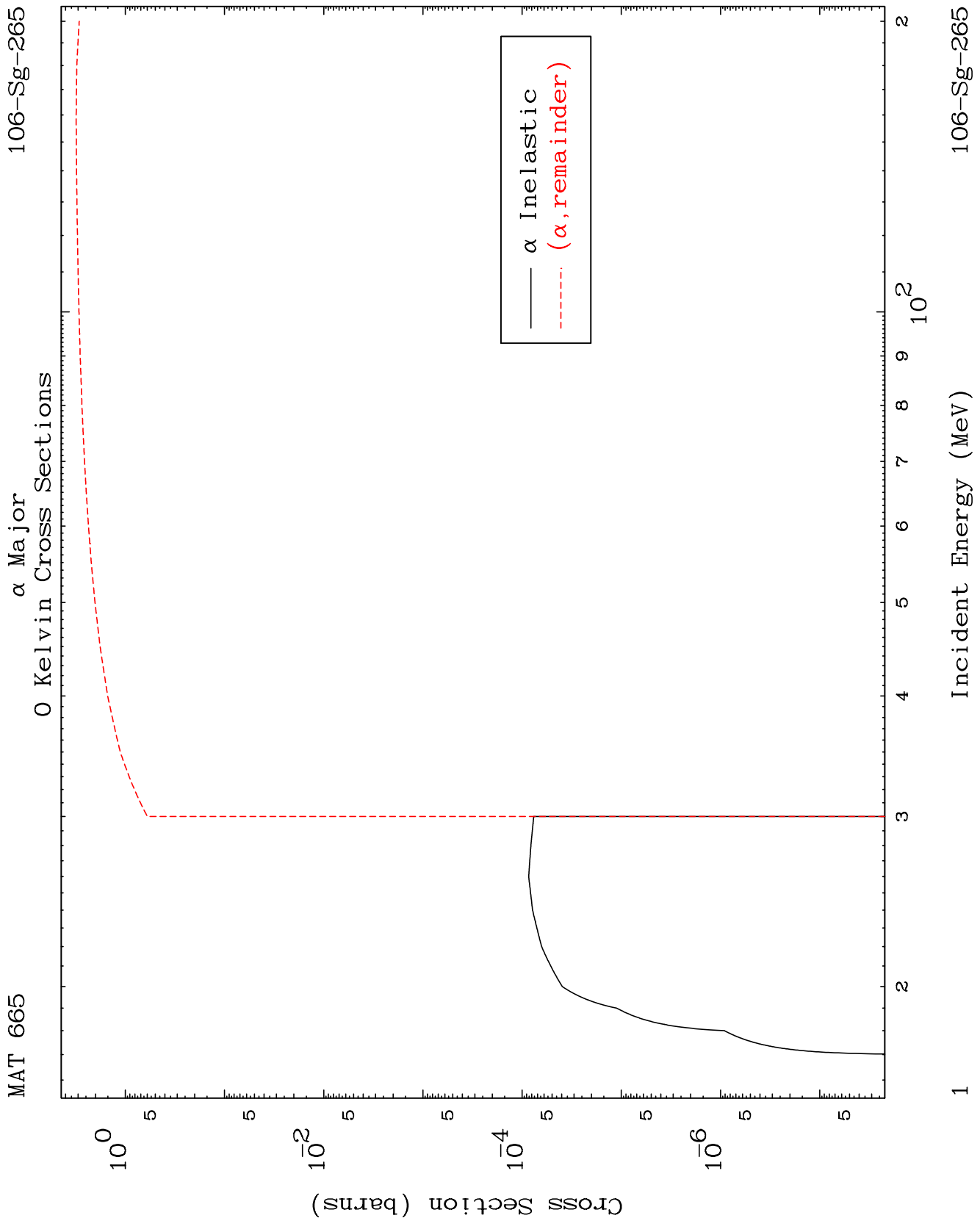
Dermott E. Cullen
1466 Hudson Way
Livermore, CA 94550
U.S.A.

Tele: 925-443-1911

E.Mail: redcullen1@comcast.net

Web: redcullen1.net/HOMEPAGE.NEW

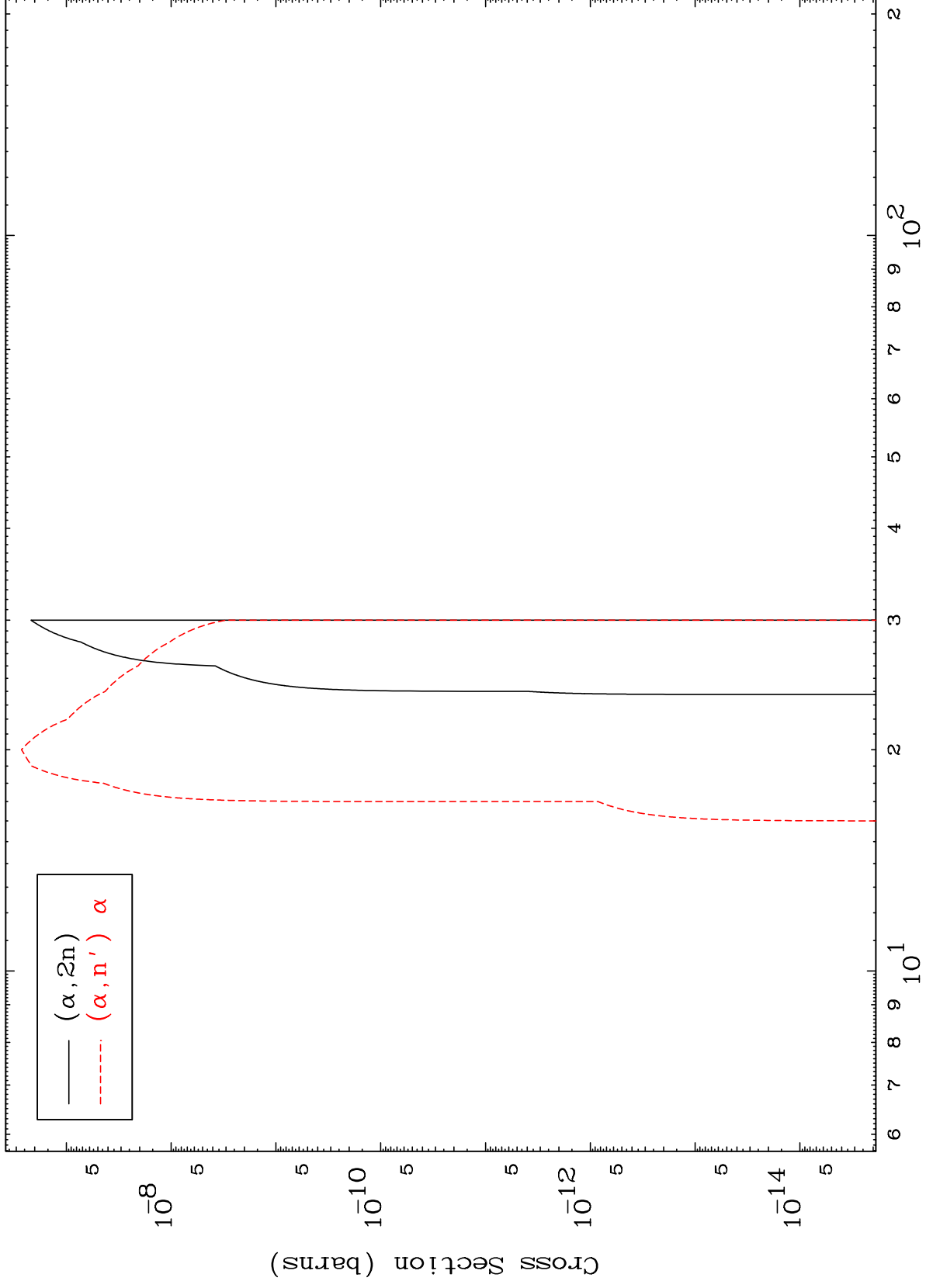
Press Mouse Button to Start



MAT 665

α Neutron Production
0 Kelvin Cross Sections

106-Sg-265



2

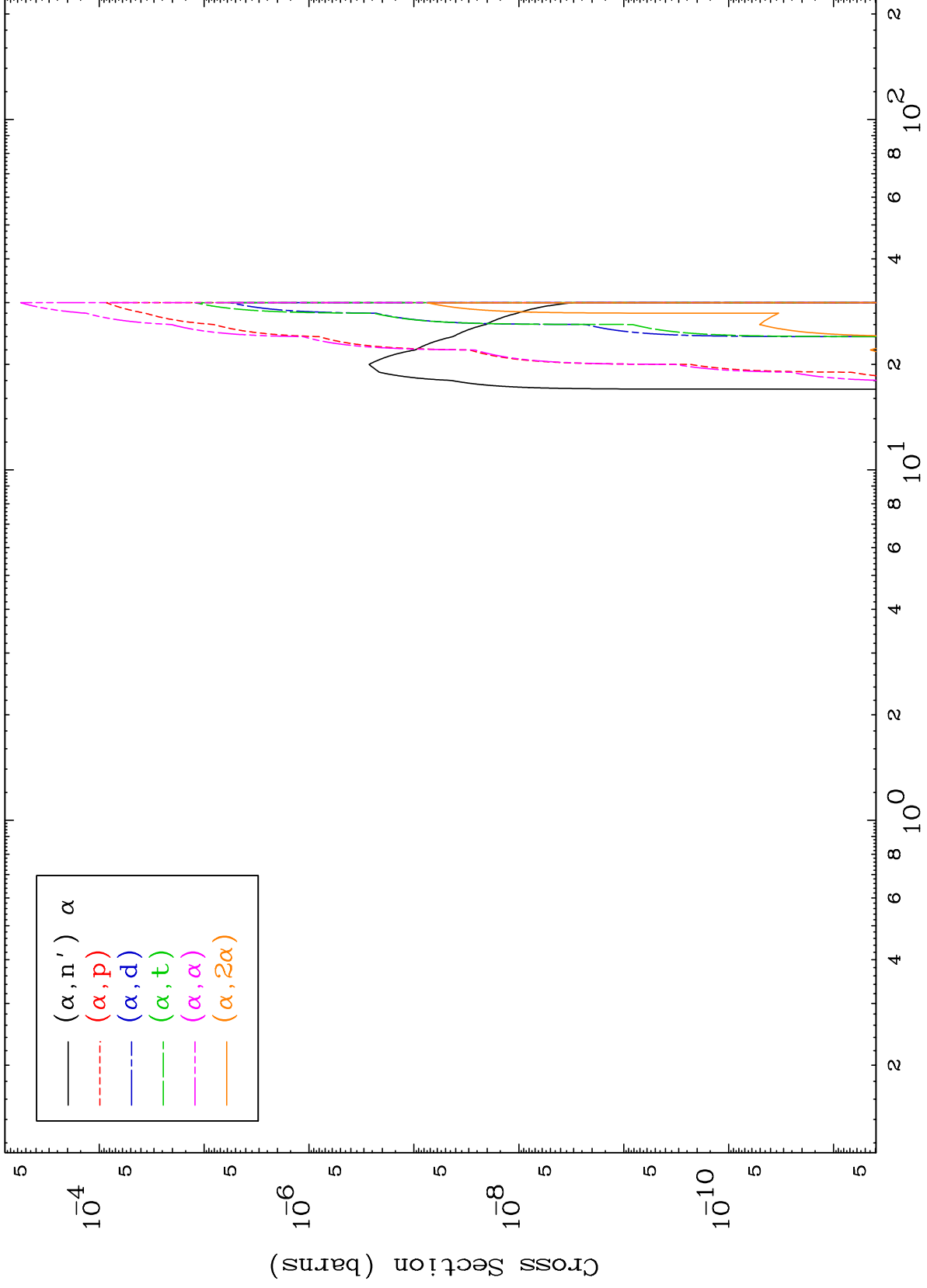
Incident Energy (MeV)

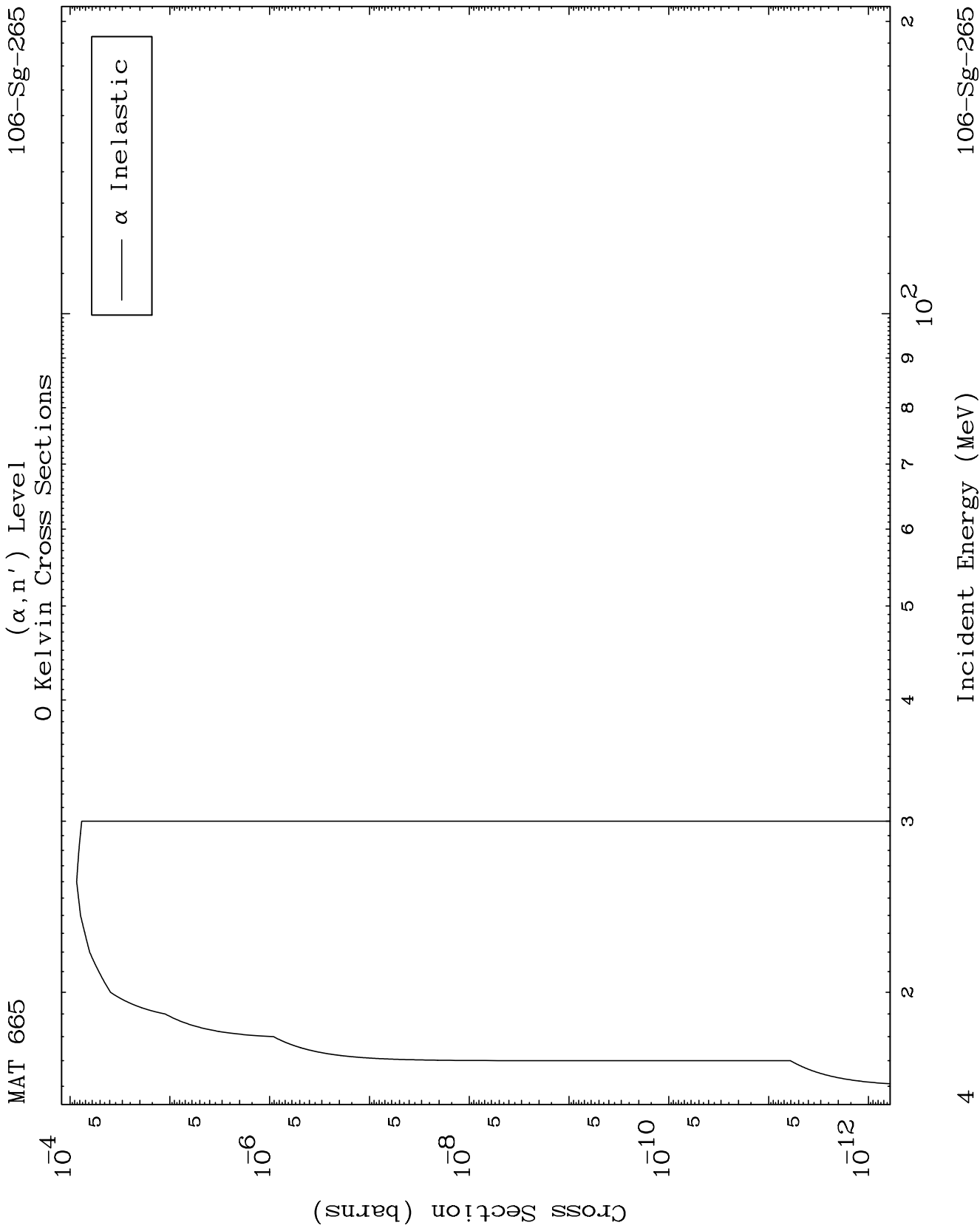
106-Sg-265

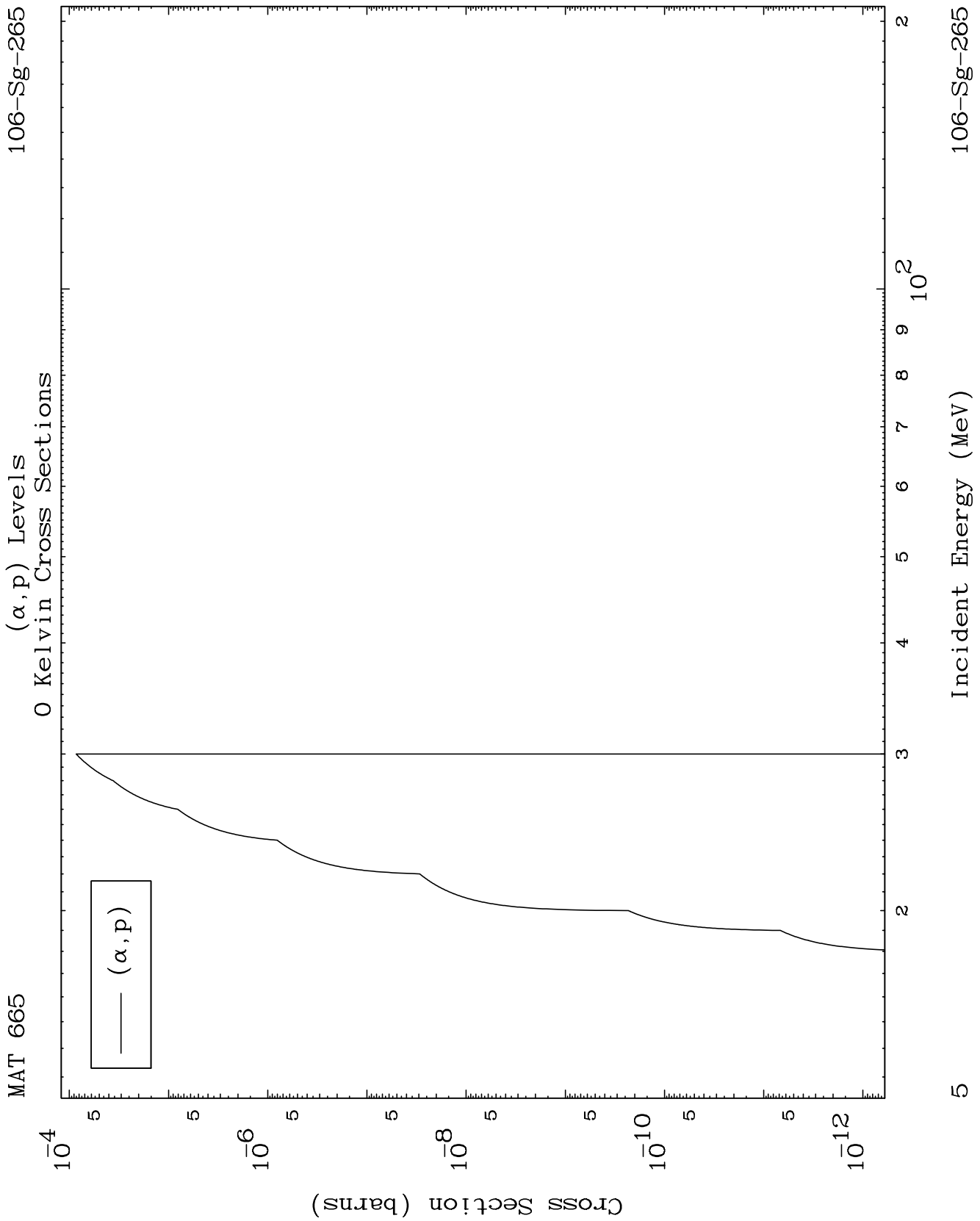
MAT 665

α Charged Particle
0 Kelvin Cross Sections

106-Sg-265



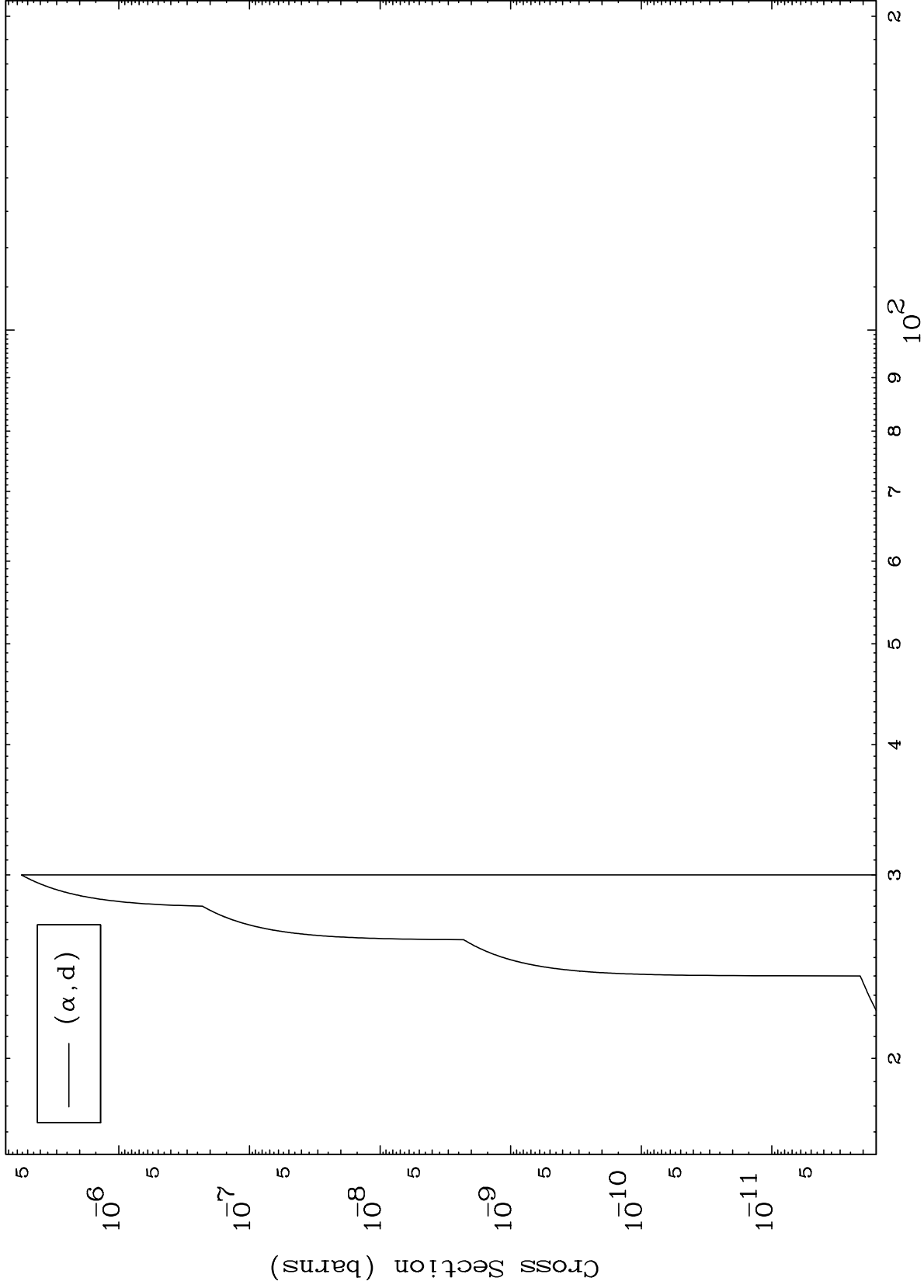




MAT 665

(α, d) Levels
0 Kelvin Cross Sections

106-Sg-265



6

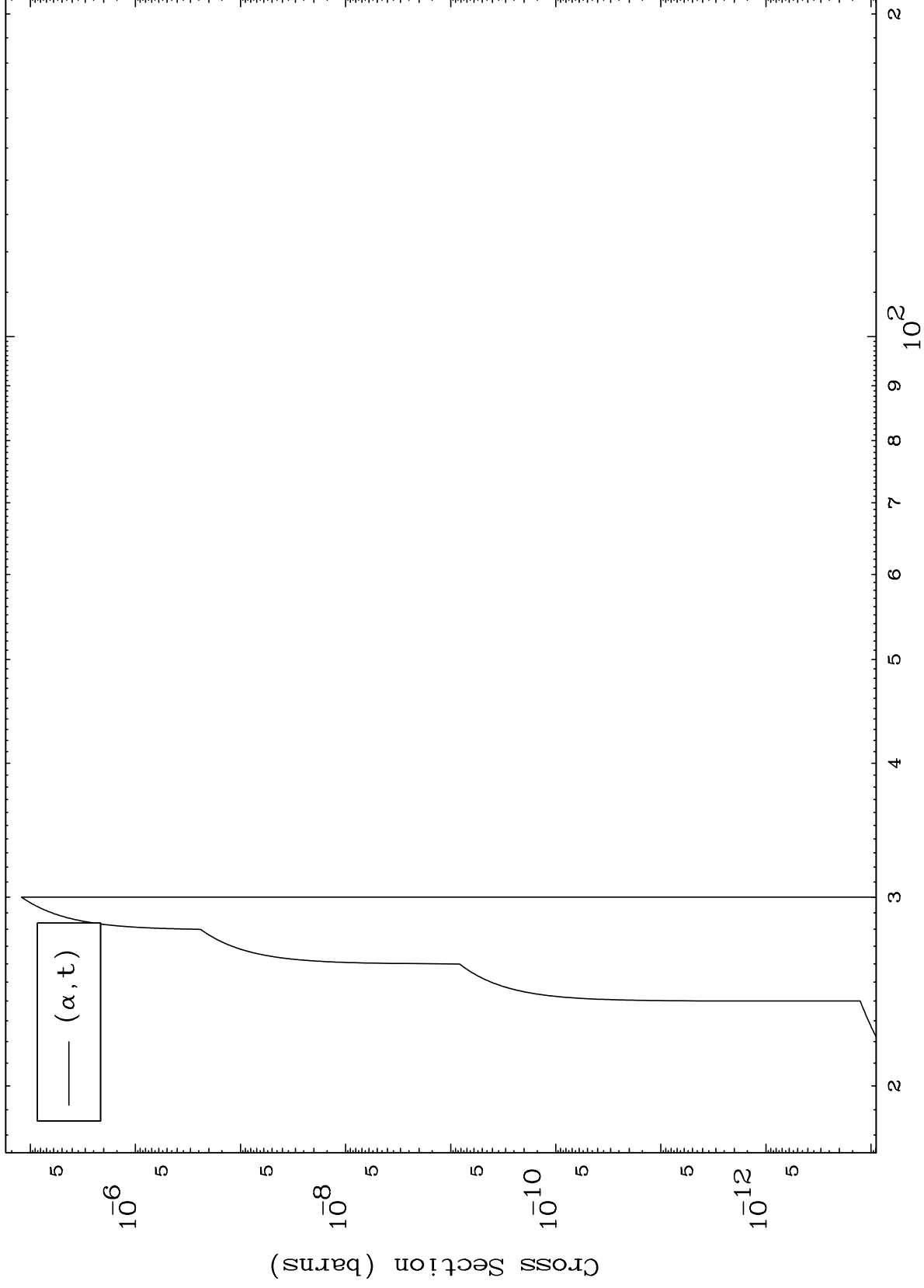
Incident Energy (MeV)

106-Sg-265

MAT 665

106-Sg-265

(α, t) Levels
0 Kelvin Cross Sections



106-Sg-265

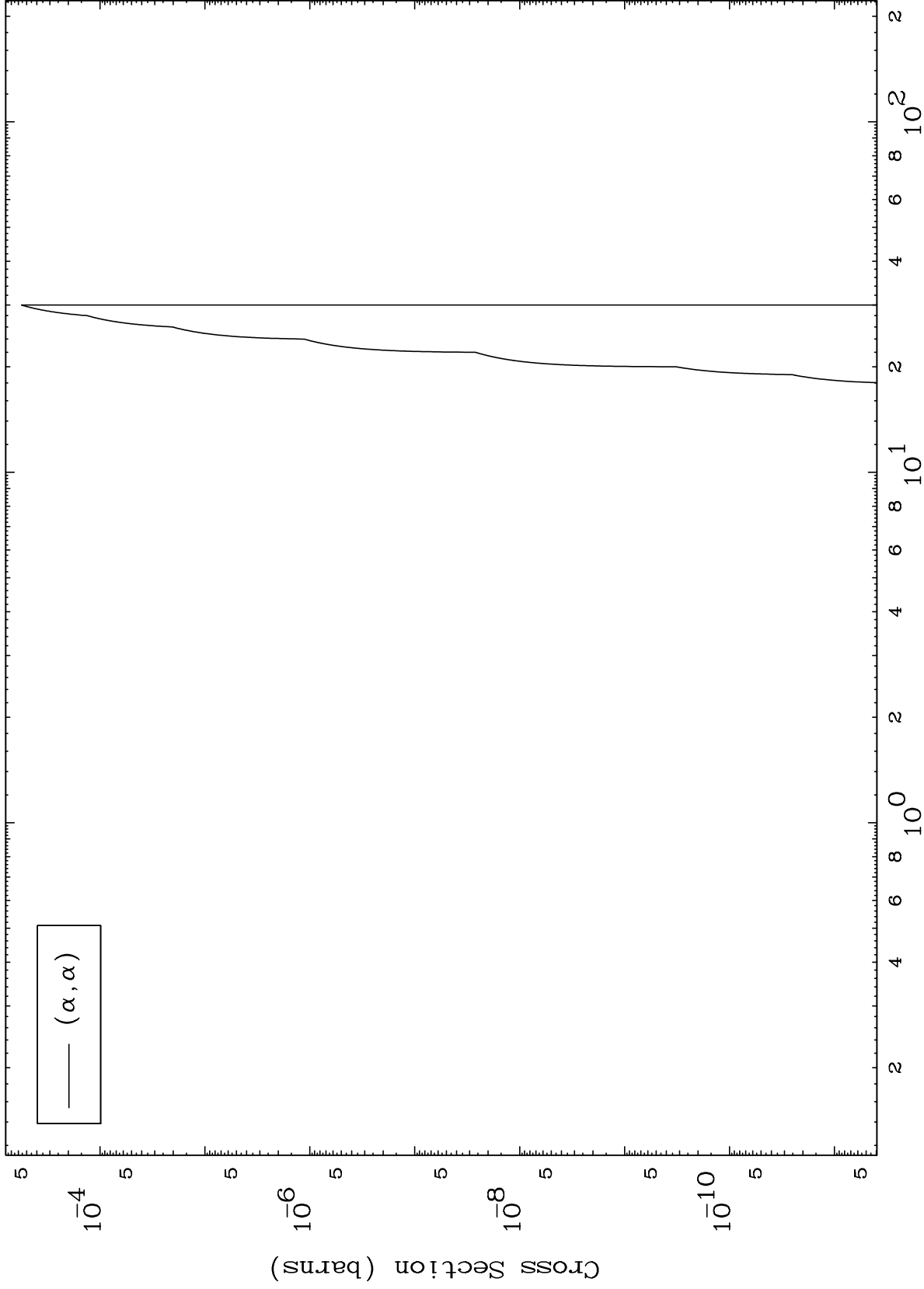
Incident Energy (MeV)

7

MAT 665

(α, α) Levels
0 Kelvin Cross Sections

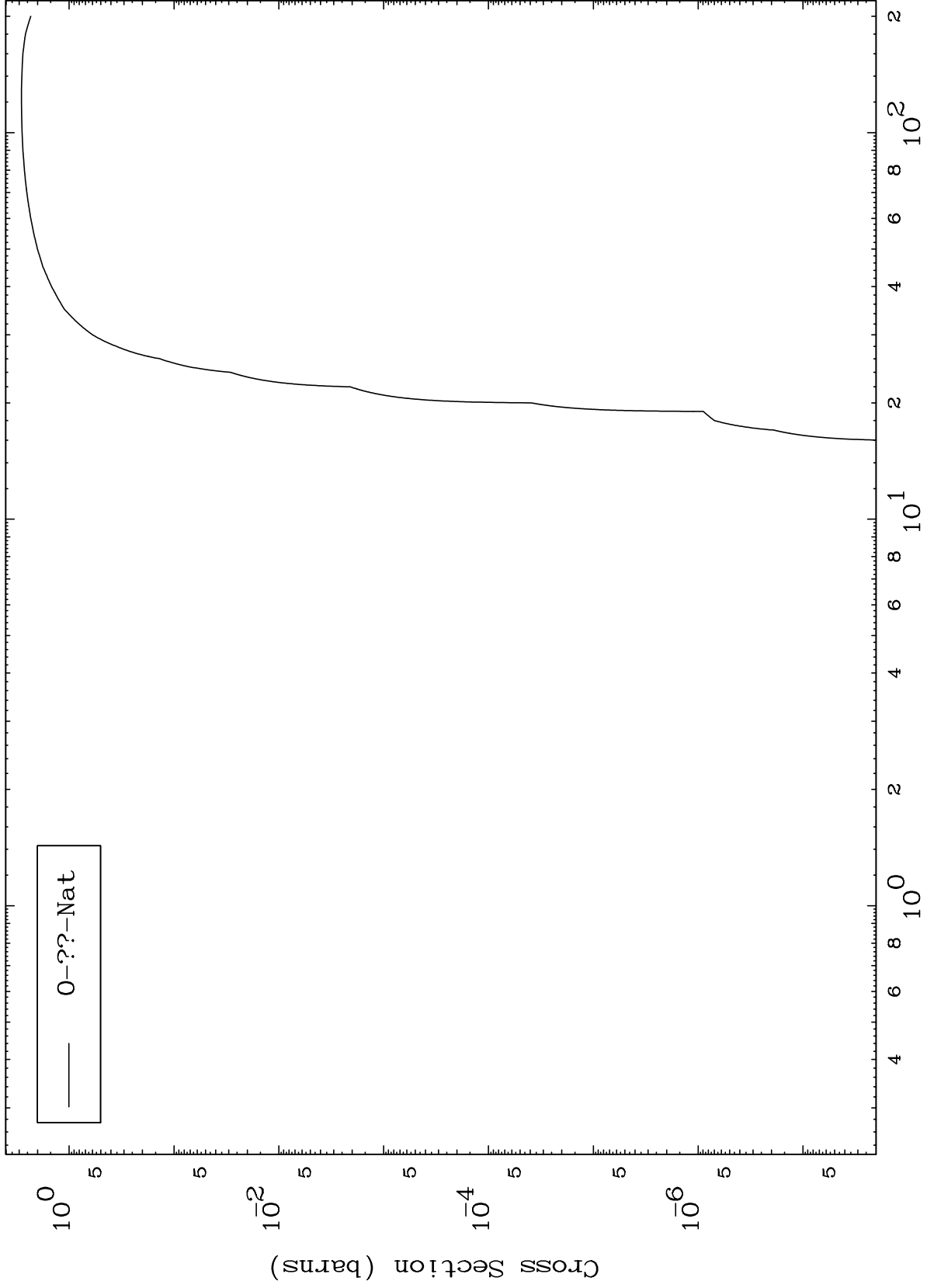
106-Sg-265



MAT 665

106-Sg-265

α Fission
Radionuclide Production Cross Section

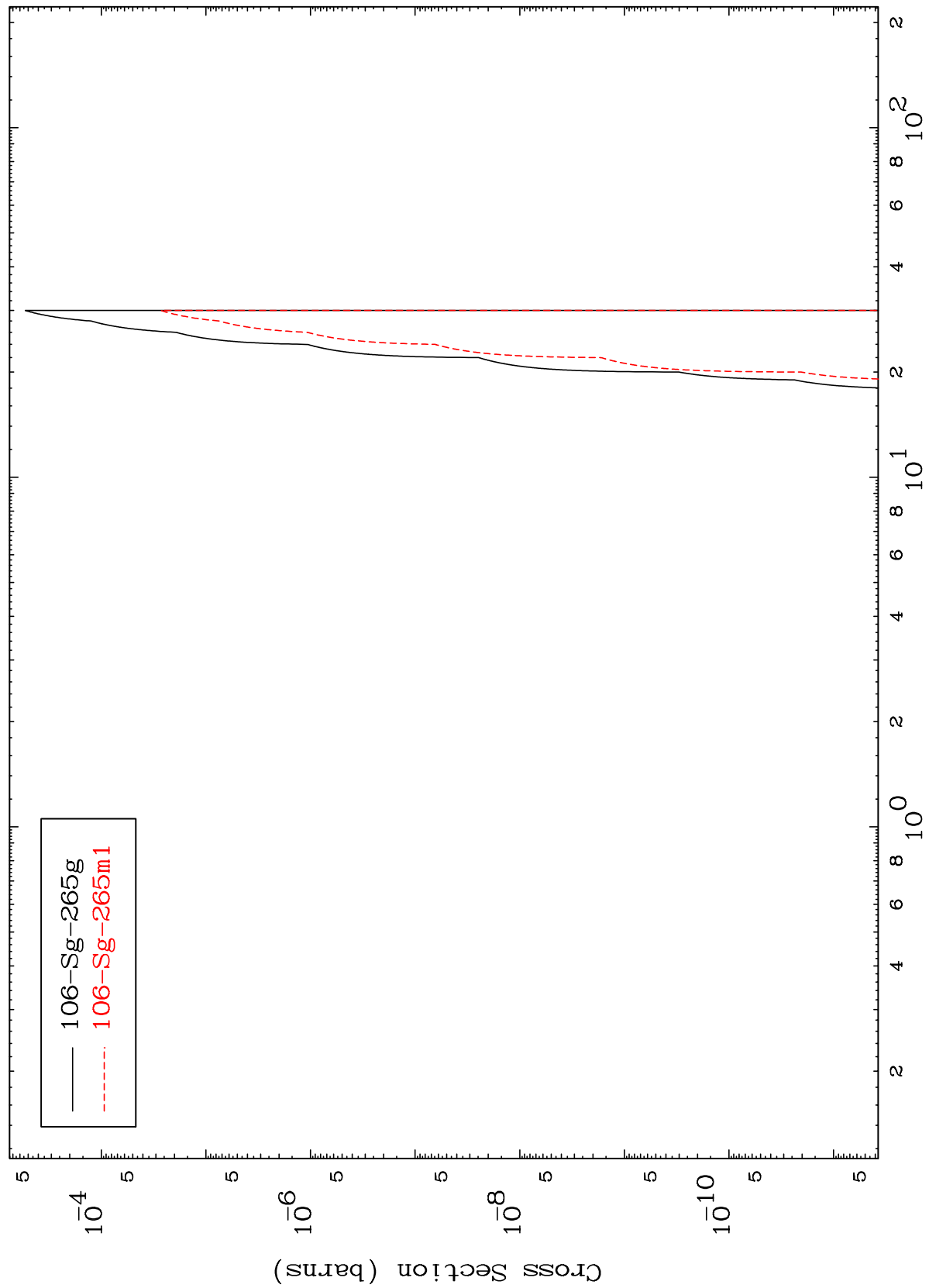


MAT 665

106-Sg-265

(α, α)

Radionuclide Production Cross Section



10

106-Sg-265

Incident Energy (MeV)

MAT 665

106-Sg-265

Radionuclide Production Cross Section
($\alpha, 2\alpha$)

