

Program EVALPLOT
(Version 2018-1)

by

Dermott E. Cullen
(Present Contact Information)

Dermott E. Cullen
1466 Hudson Way
Livermore, CA 94550
U.S.A.

Tele: 925-443-1911

E.Mail:redcullen1@comcast.net

Web:redcullen1.net/HOMEPAGE.NEW

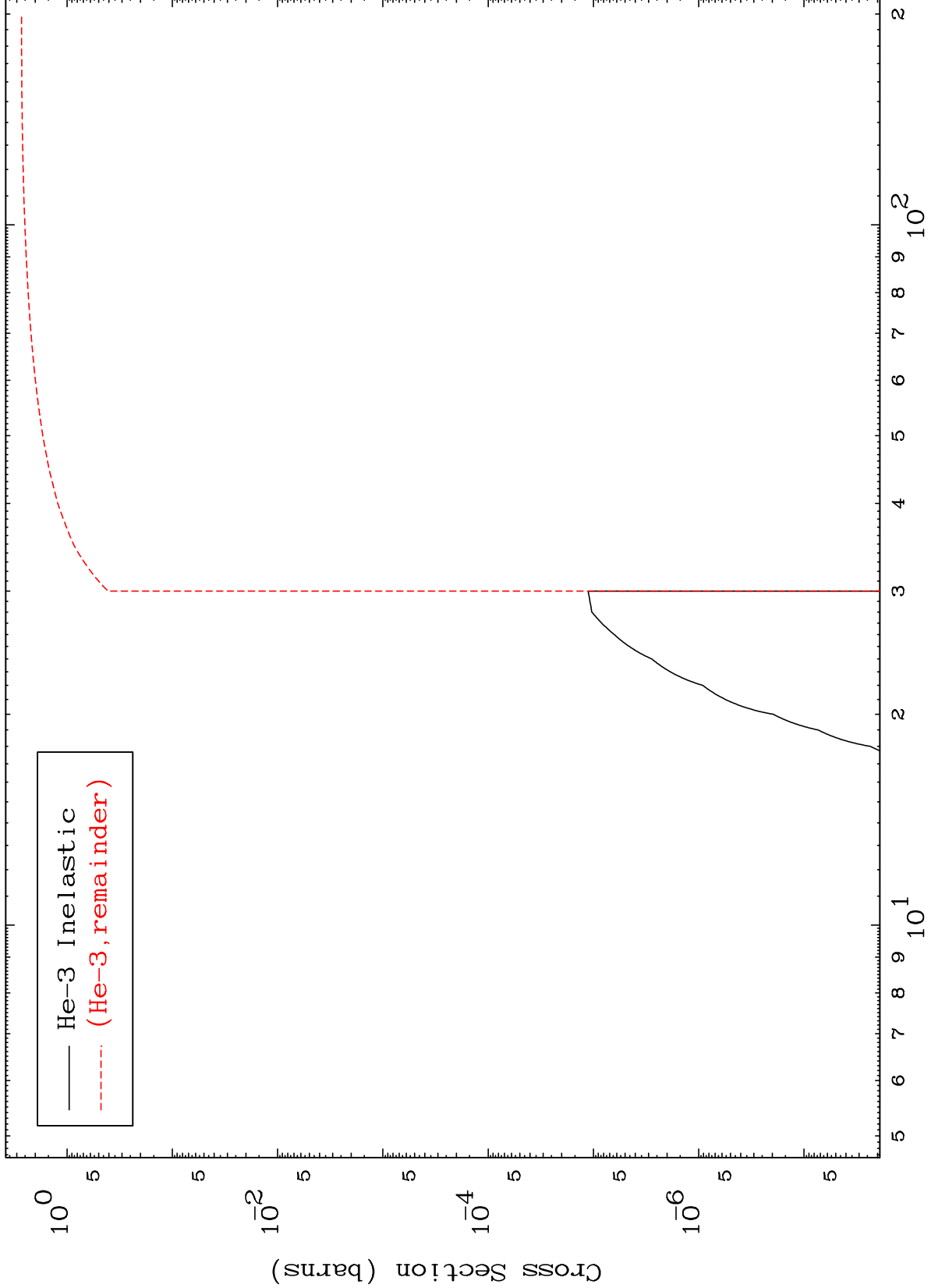
Press Mouse Button to Start

MAT 868

He-3 Major

108-Hs-268

0 Kelvin Cross Sections

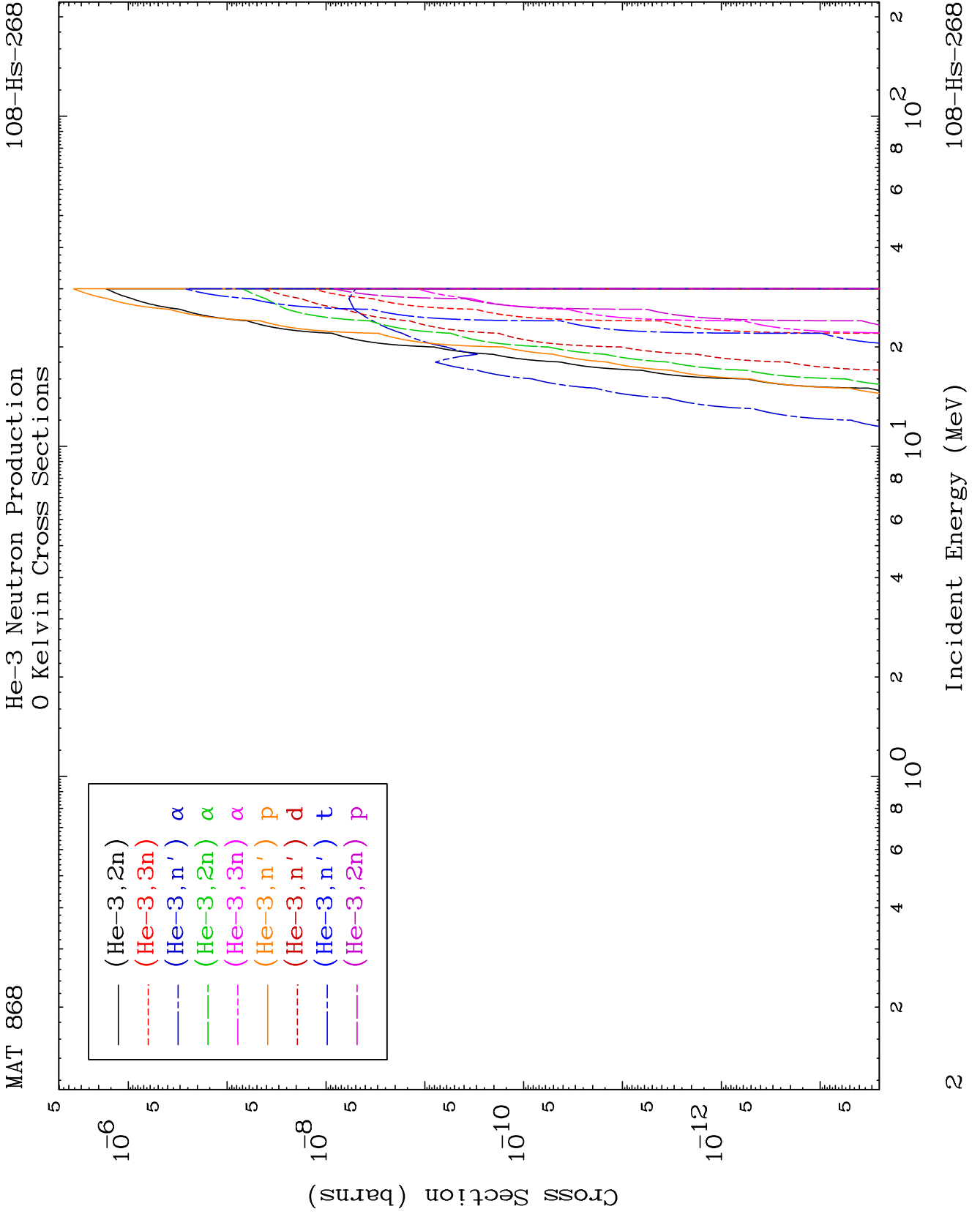


— He-3 Inelastic
- - - (He-3, remainder)

1

Incident Energy (MeV)

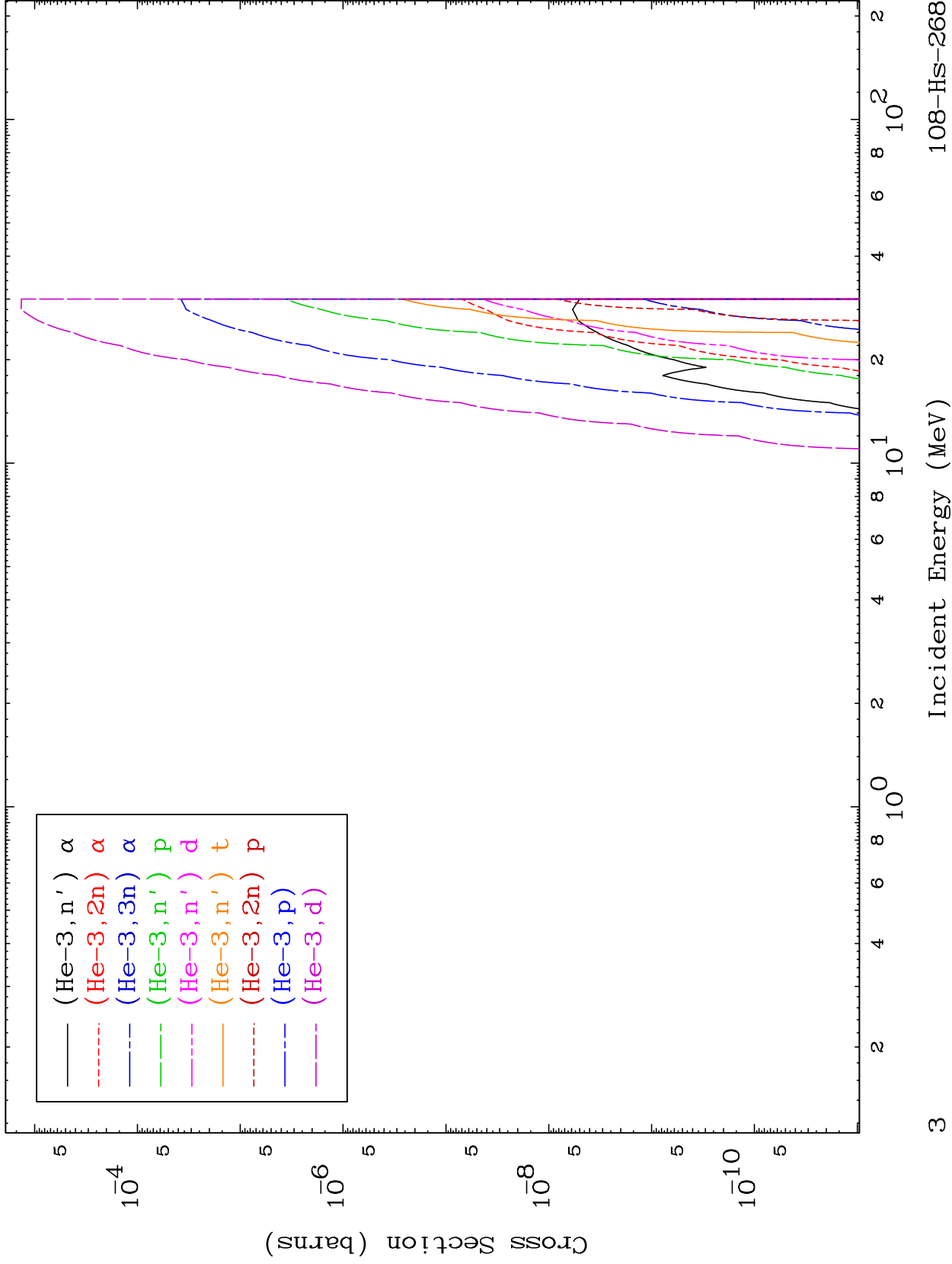
108-Hs-268



MAT 868

He-3 Charged Particle
0 Kelvin Cross Sections

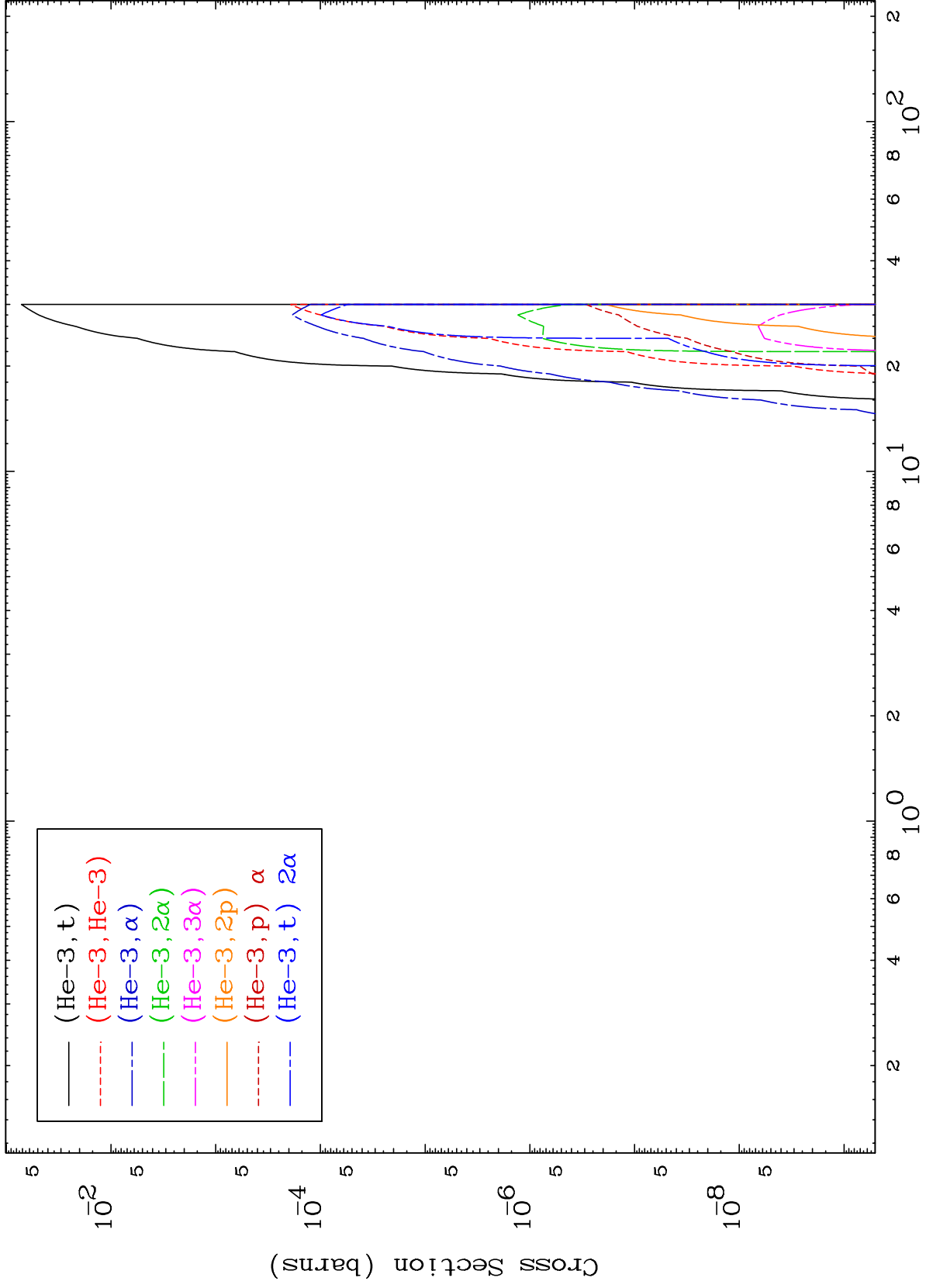
108-Hs-268



MAT 868

He-3 Charged Particle
0 Kelvin Cross Sections

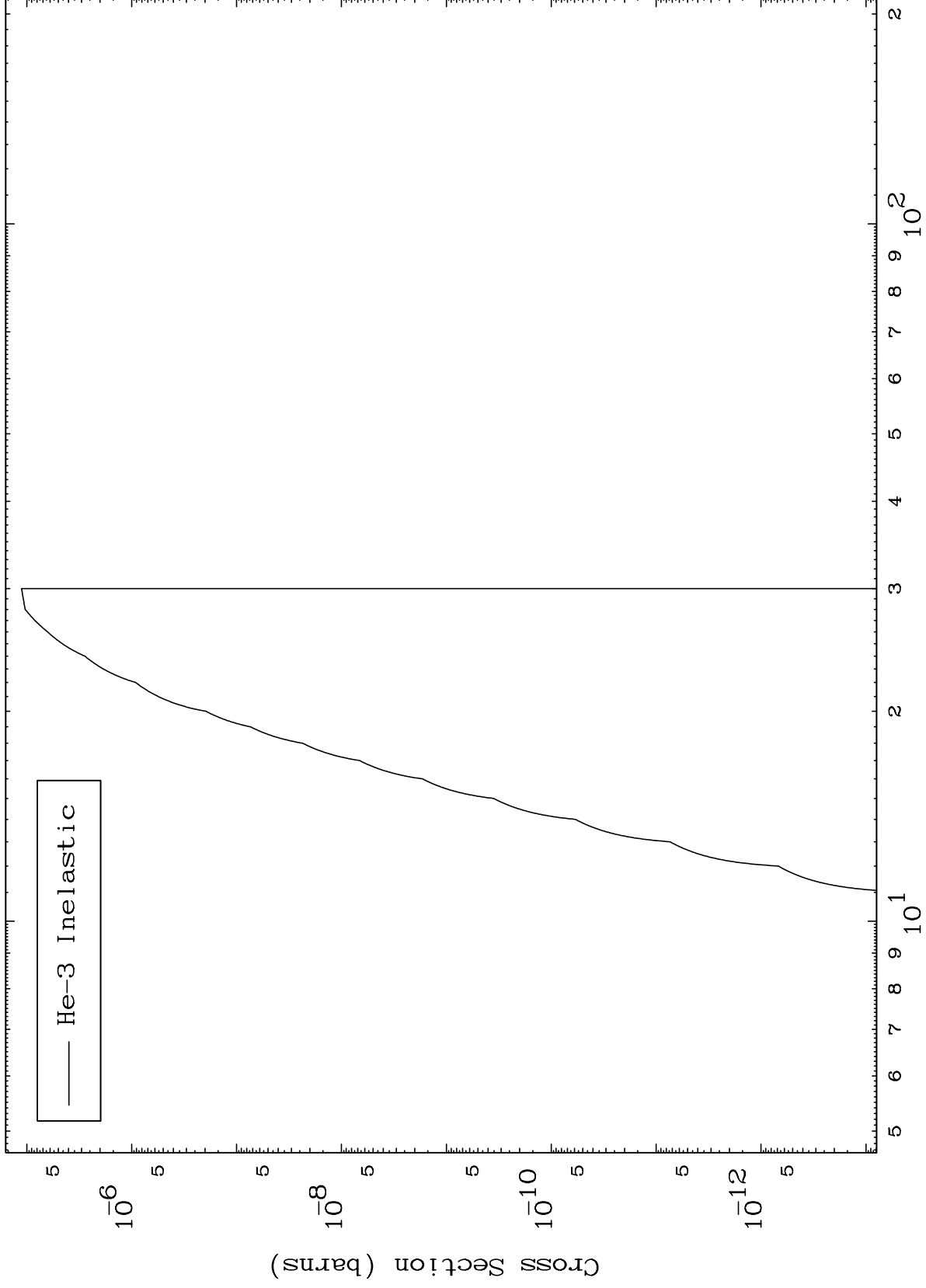
108-Hs-268



MAT 868

(He-3, n') Level
0 Kelvin Cross Sections

108-Hs-268



He-3 Inelastic

5

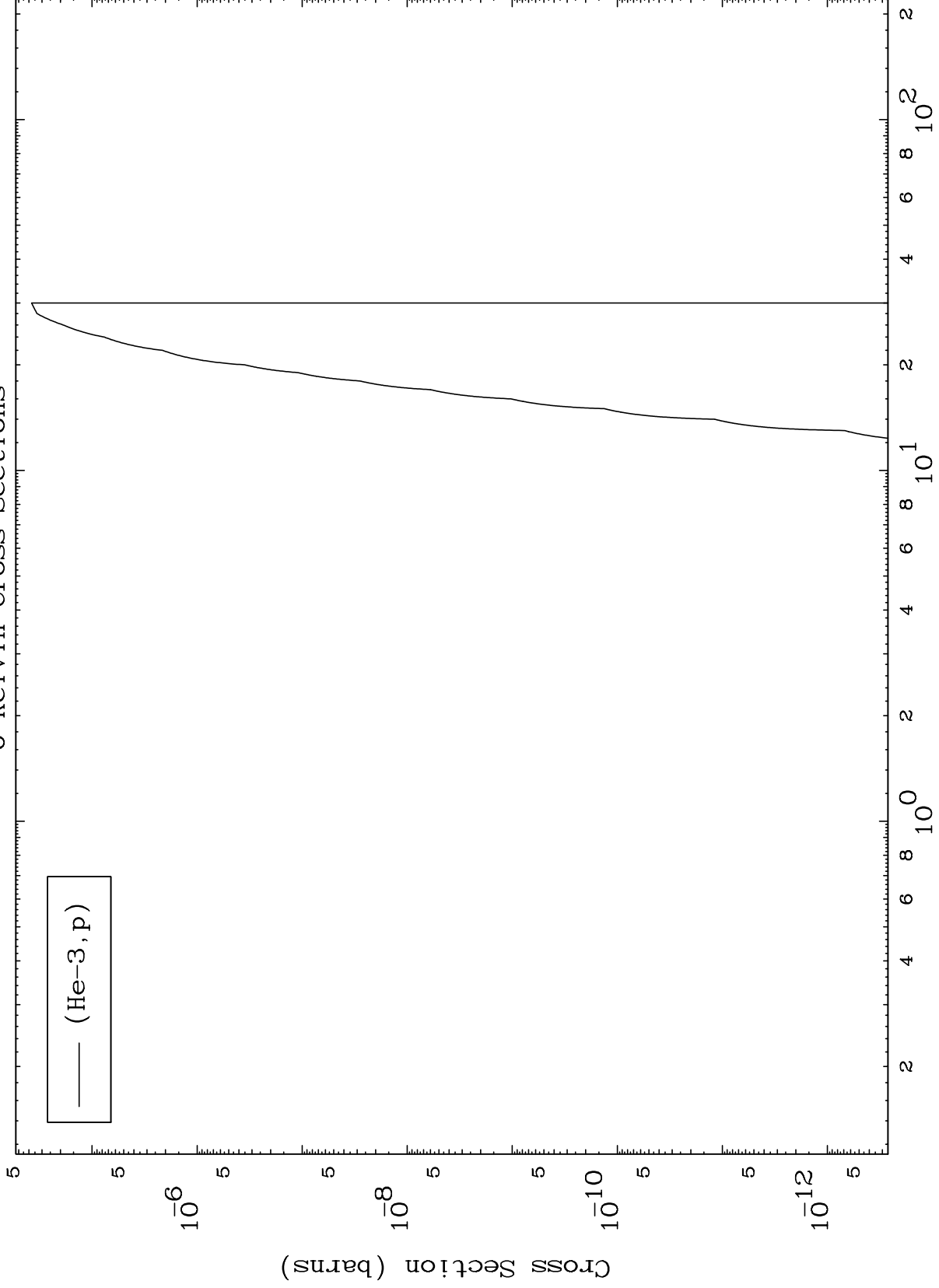
Incident Energy (MeV)

108-Hs-268

MAT 868

(He-3,p) Levels
0 Kelvin Cross Sections

108-Hs-268



6

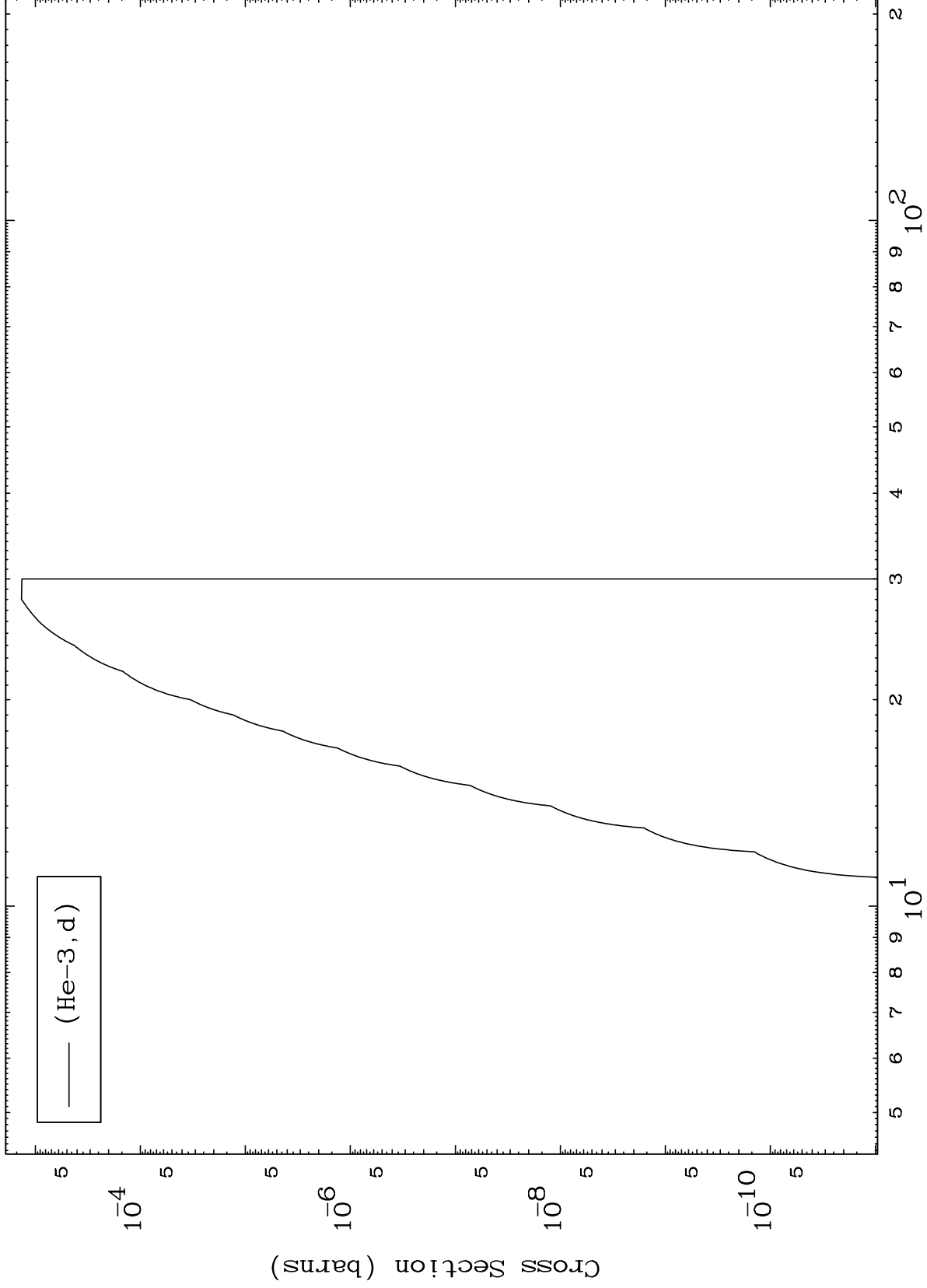
Incident Energy (MeV)

108-Hs-268

MAT 868

108-Hs-268

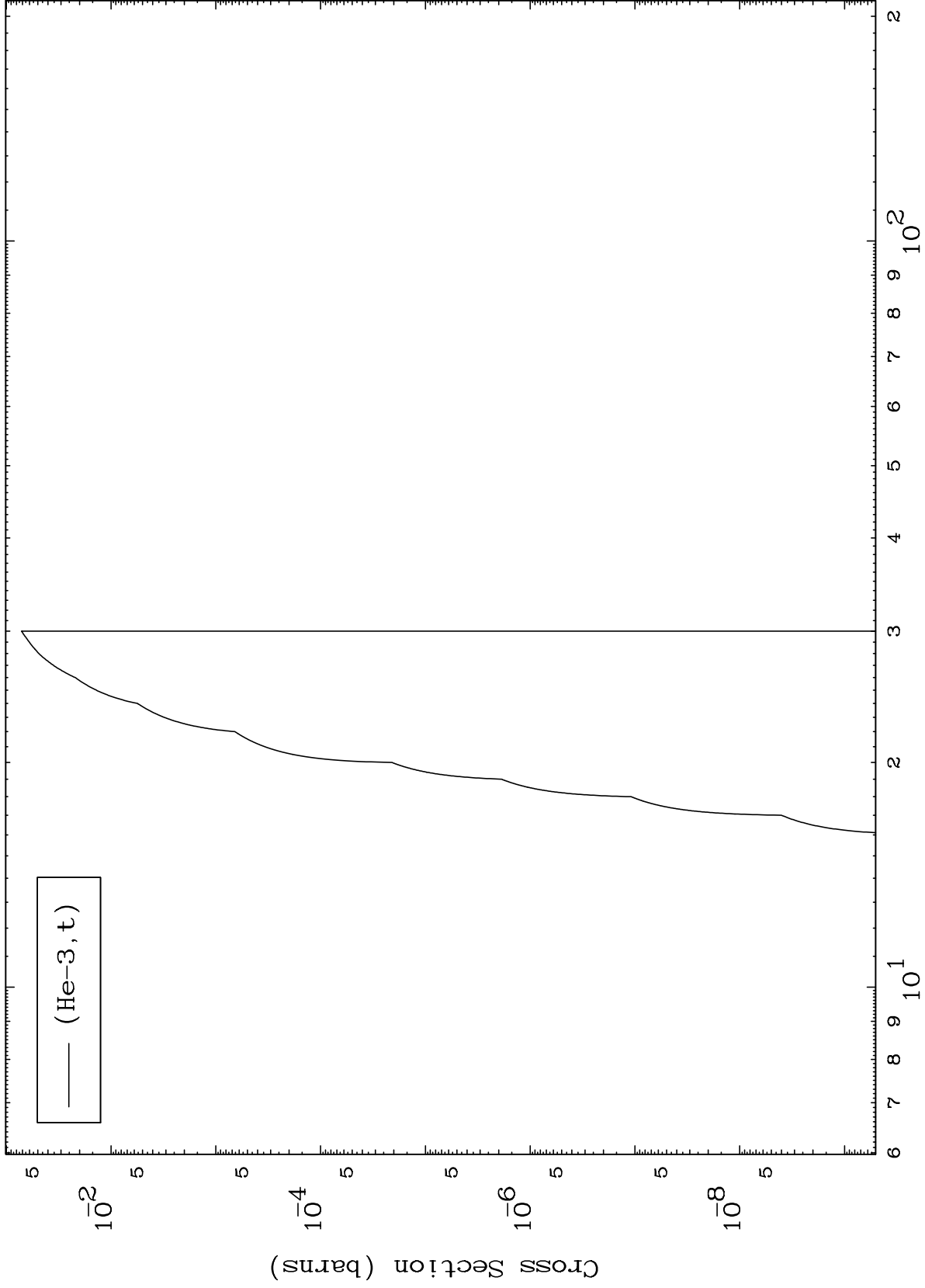
(He-3,d) Levels
0 Kelvin Cross Sections



7

Incident Energy (MeV)

108-Hs-268

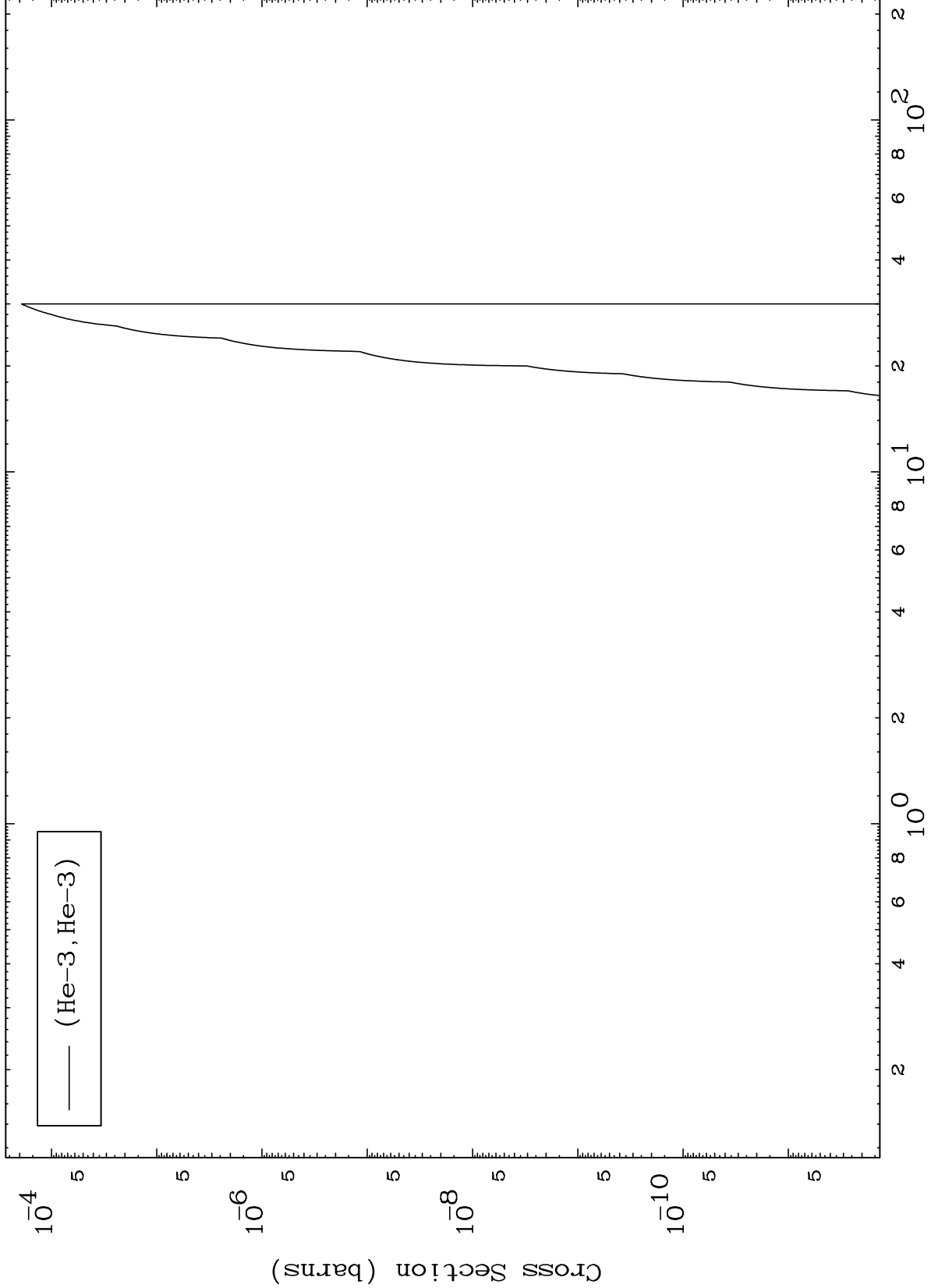


MAT 868

(He-3, He3) Levels

108-Hs-268

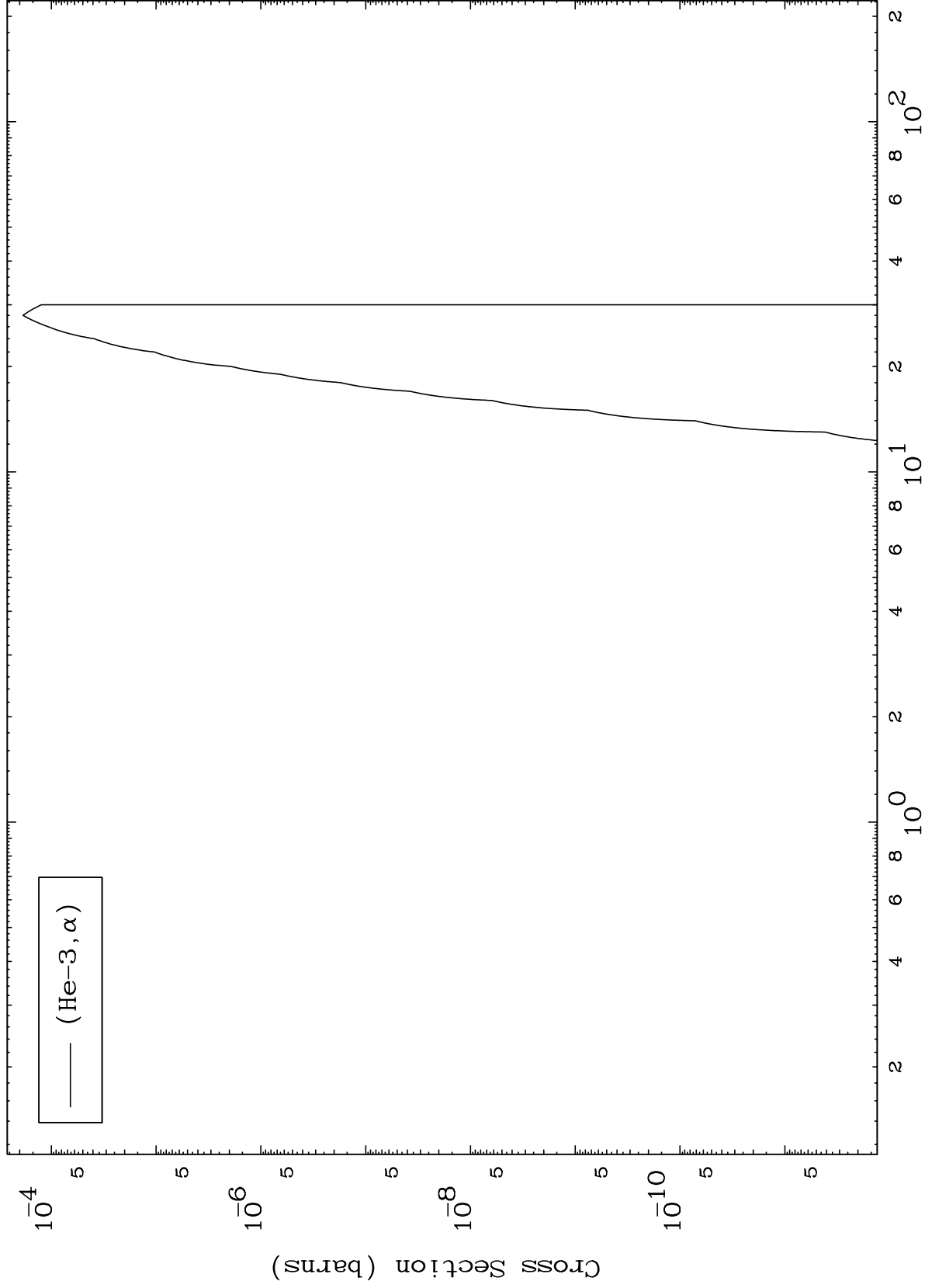
0 Kelvin Cross Sections



MAT 868

108-Hs-268

(He-3, α) Levels
0 Kelvin Cross Sections



10

108-Hs-268

Incident Energy (MeV)

MAT 868

He-3 Fission

108-Hs-268

Radionuclide Production Cross Section

