

Program EVALPLOT  
(Version 2018-1)

by

Dermott E. Cullen  
(Present Contact Information)

Dermott E. Cullen  
1466 Hudson Way  
Livermore, CA 94550  
U.S.A.

Tele: 925-443-1911

E.Mail:redcullen1@comcast.net

Web:redcullen1.net/HOMEPAGE.NEW

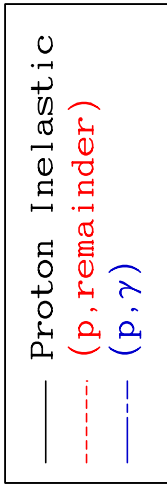
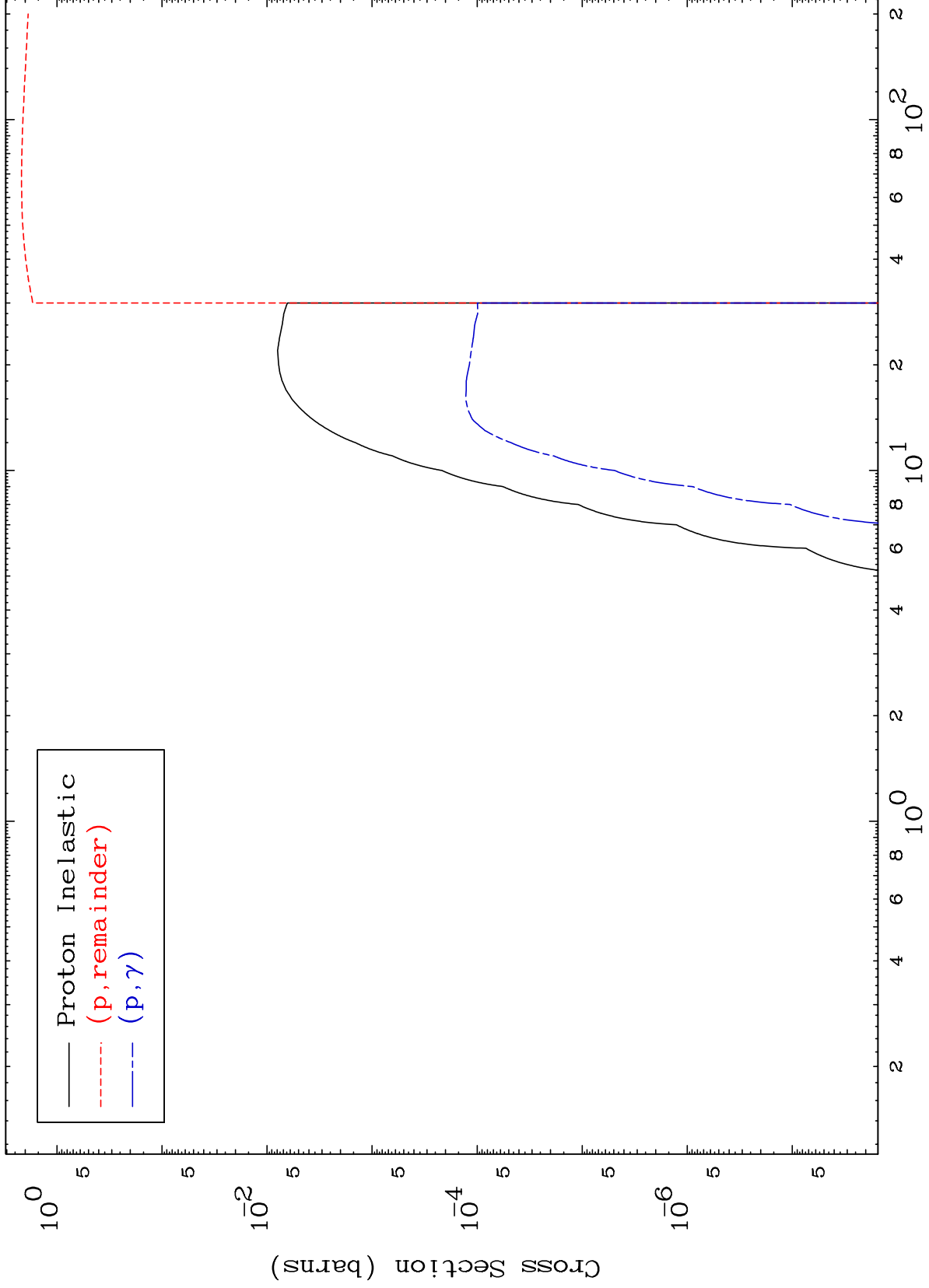
Press Mouse Button to Start

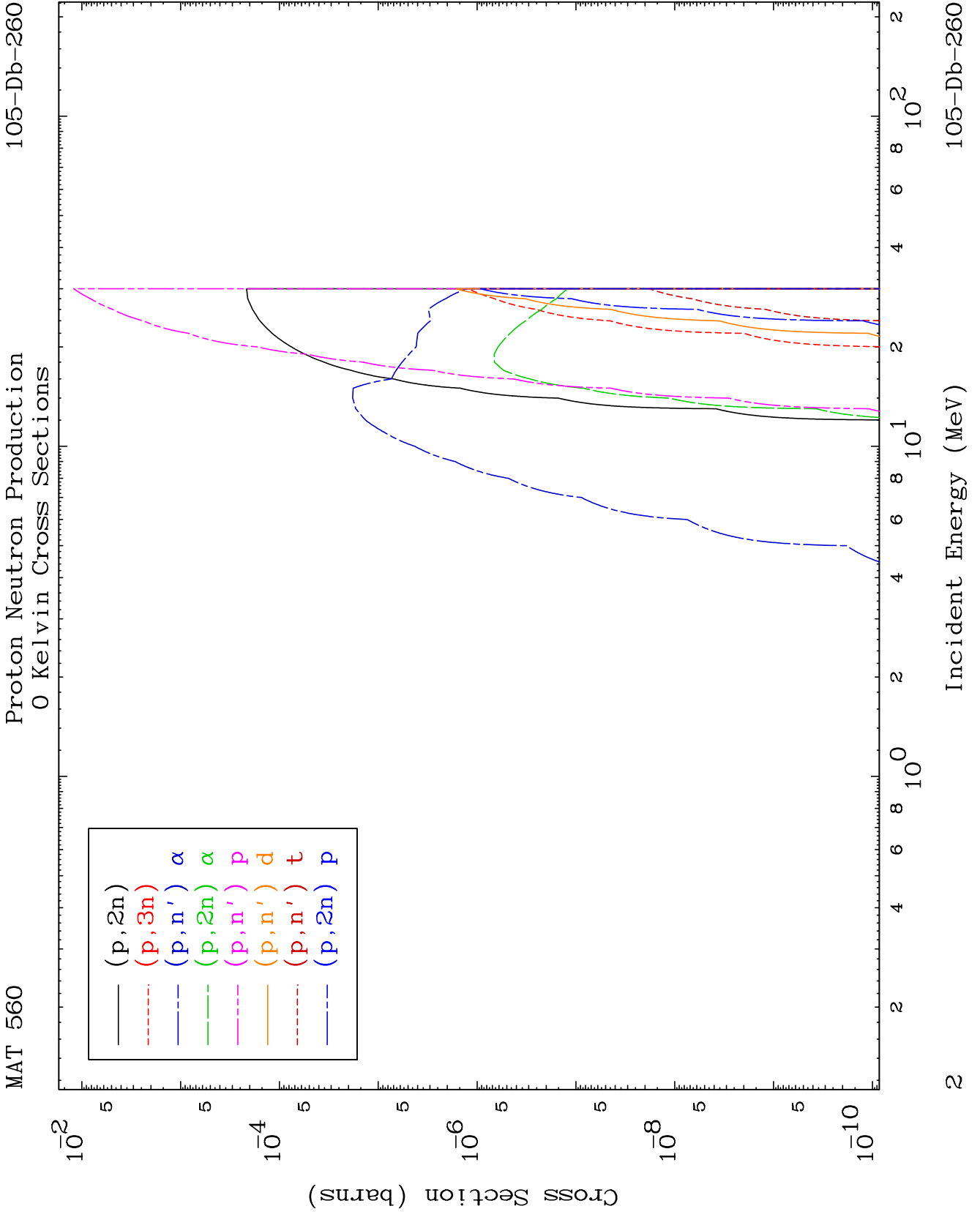
MAT 560

Proton Major

105-Db-260

0 Kelvin Cross Sections

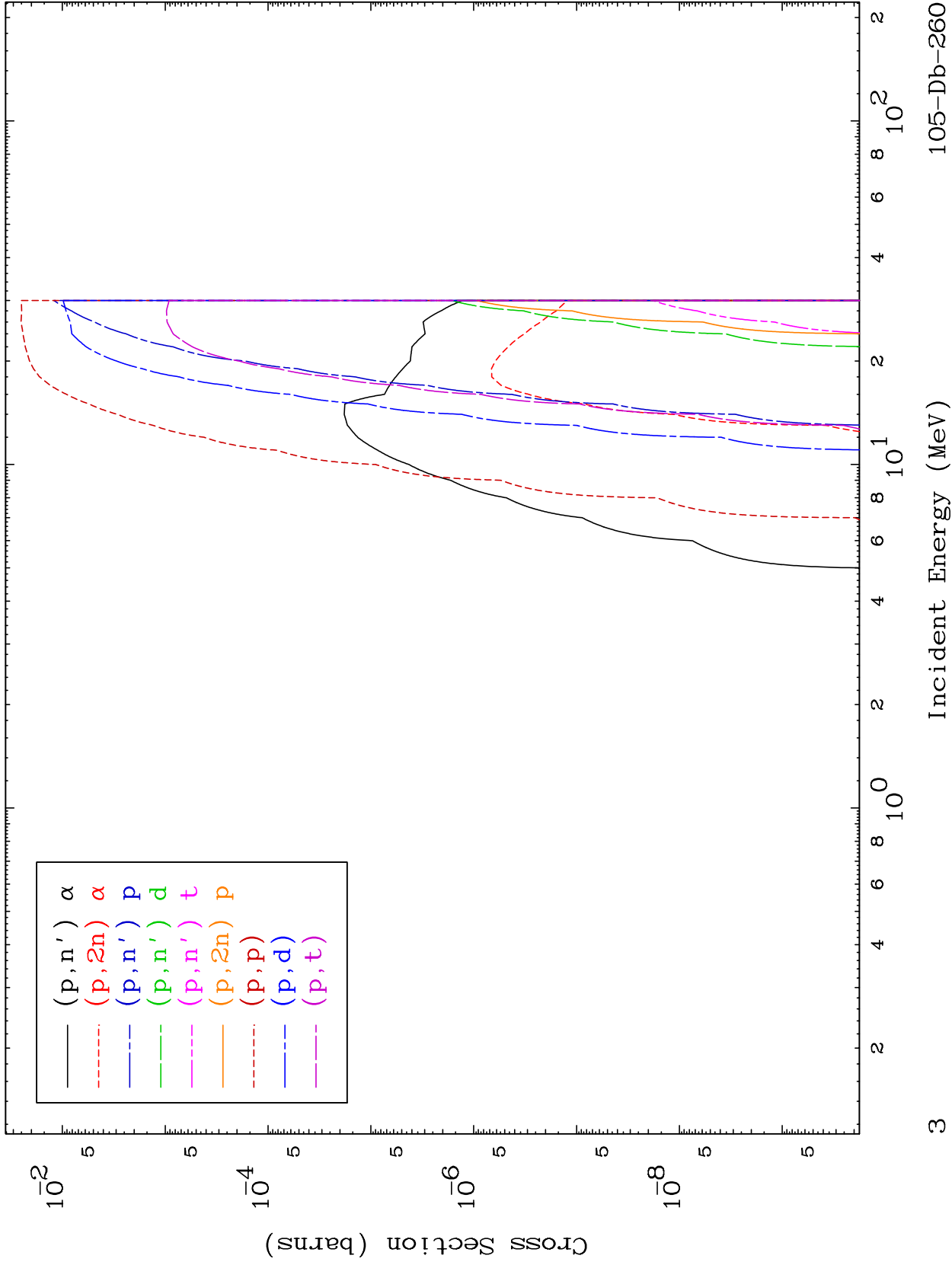


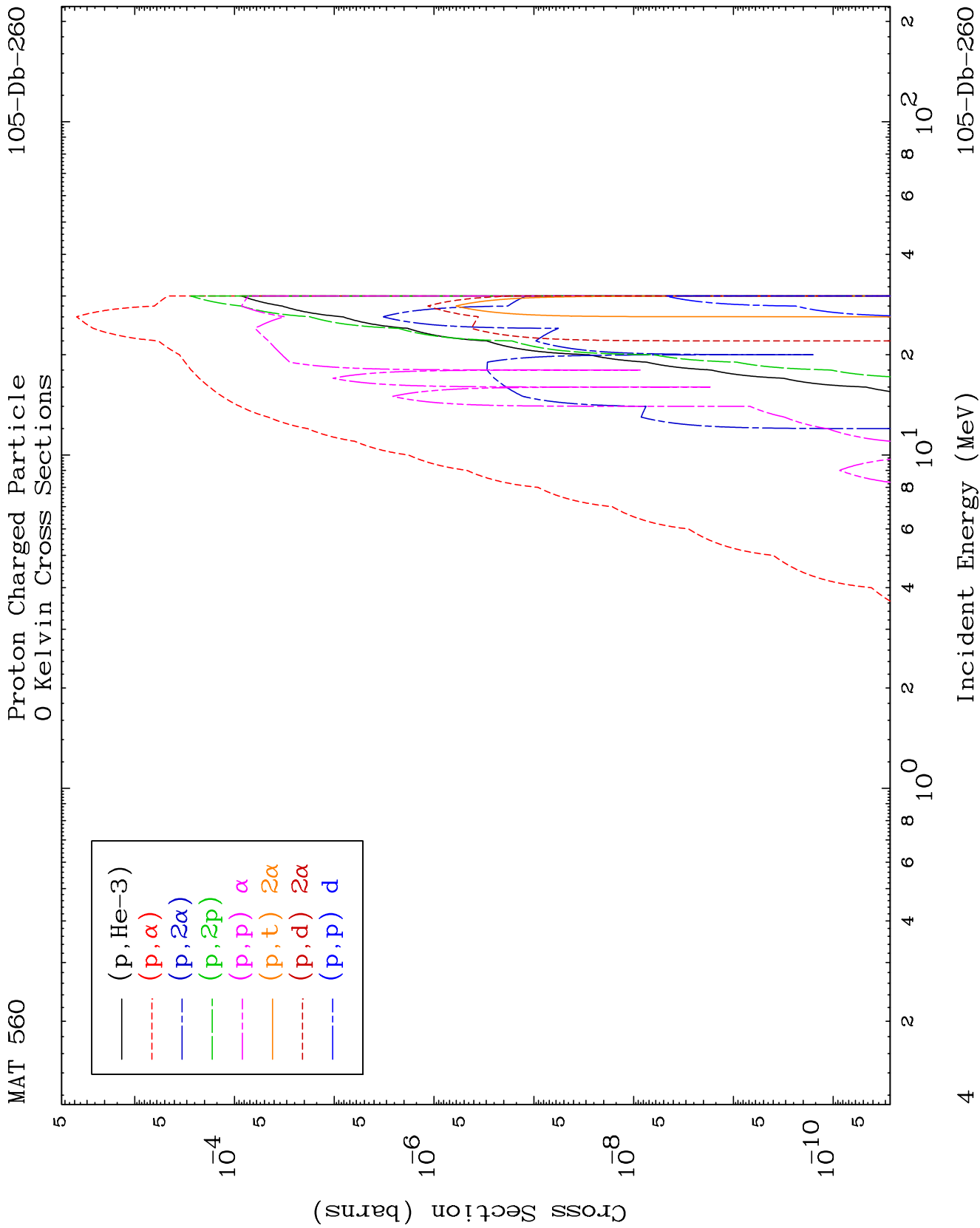


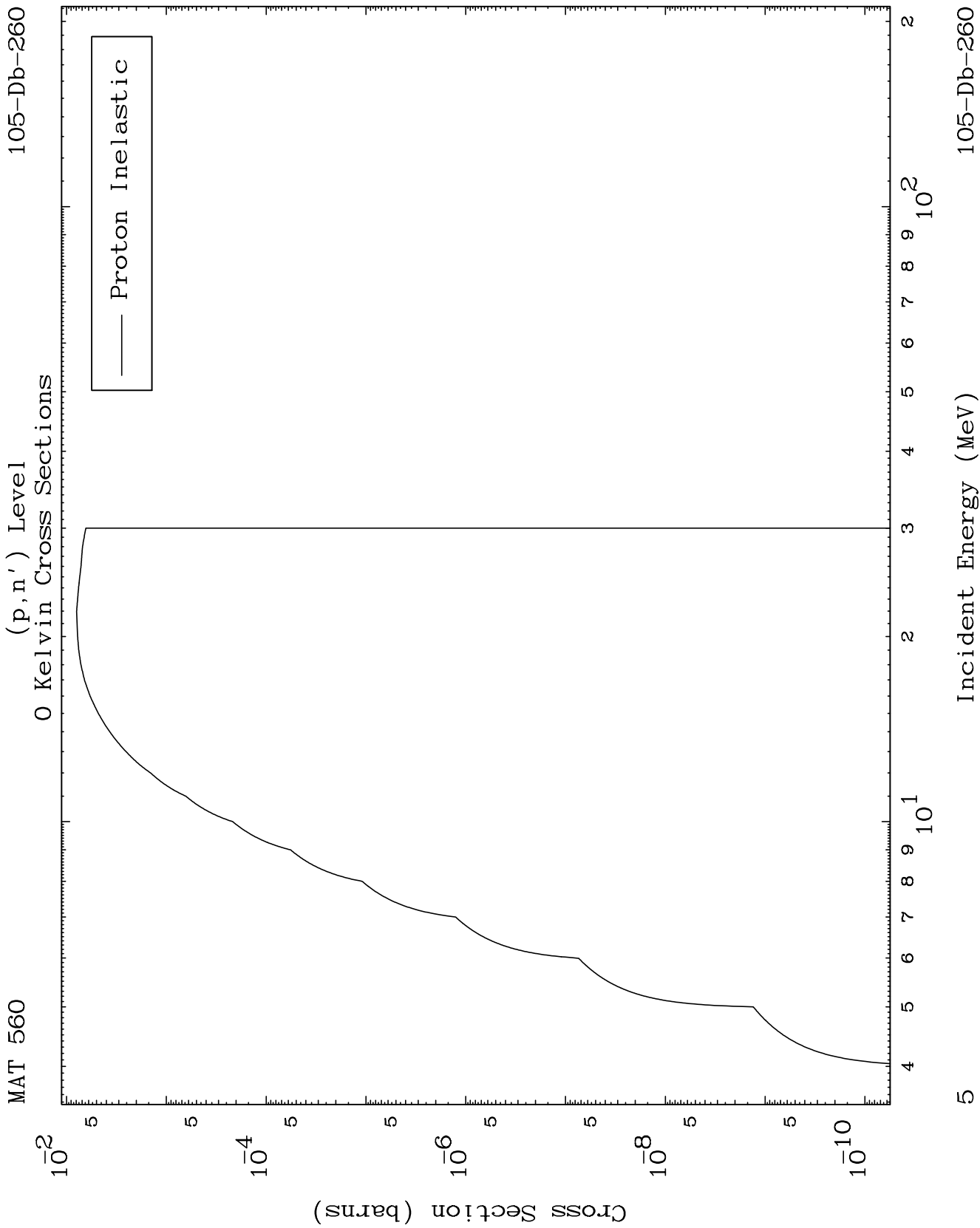
MAT 560

Proton Charged Particle  
0 Kelvin Cross Sections

105-Db-260



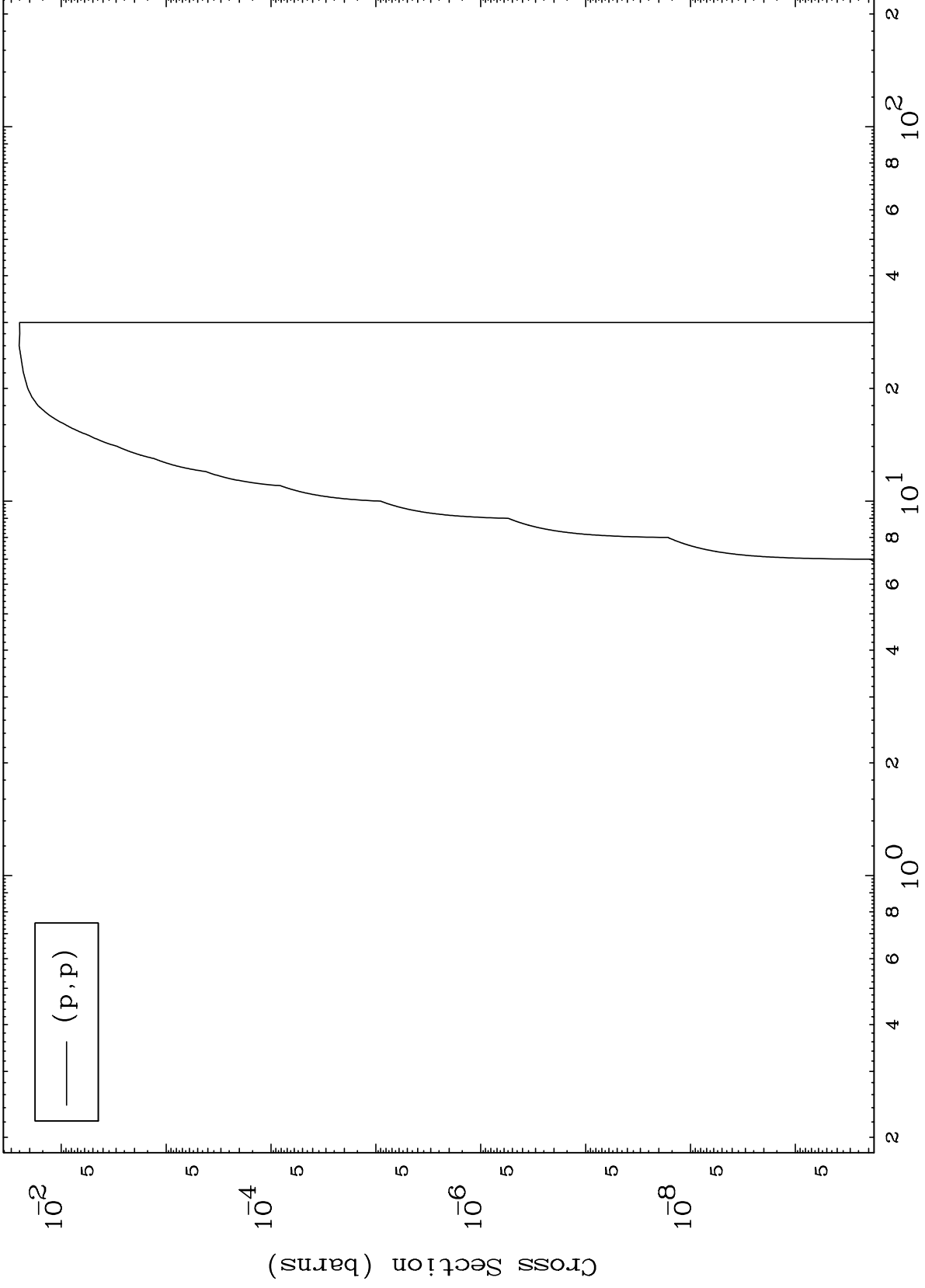




MAT 560

(p,p) Levels  
0 Kelvin Cross Sections

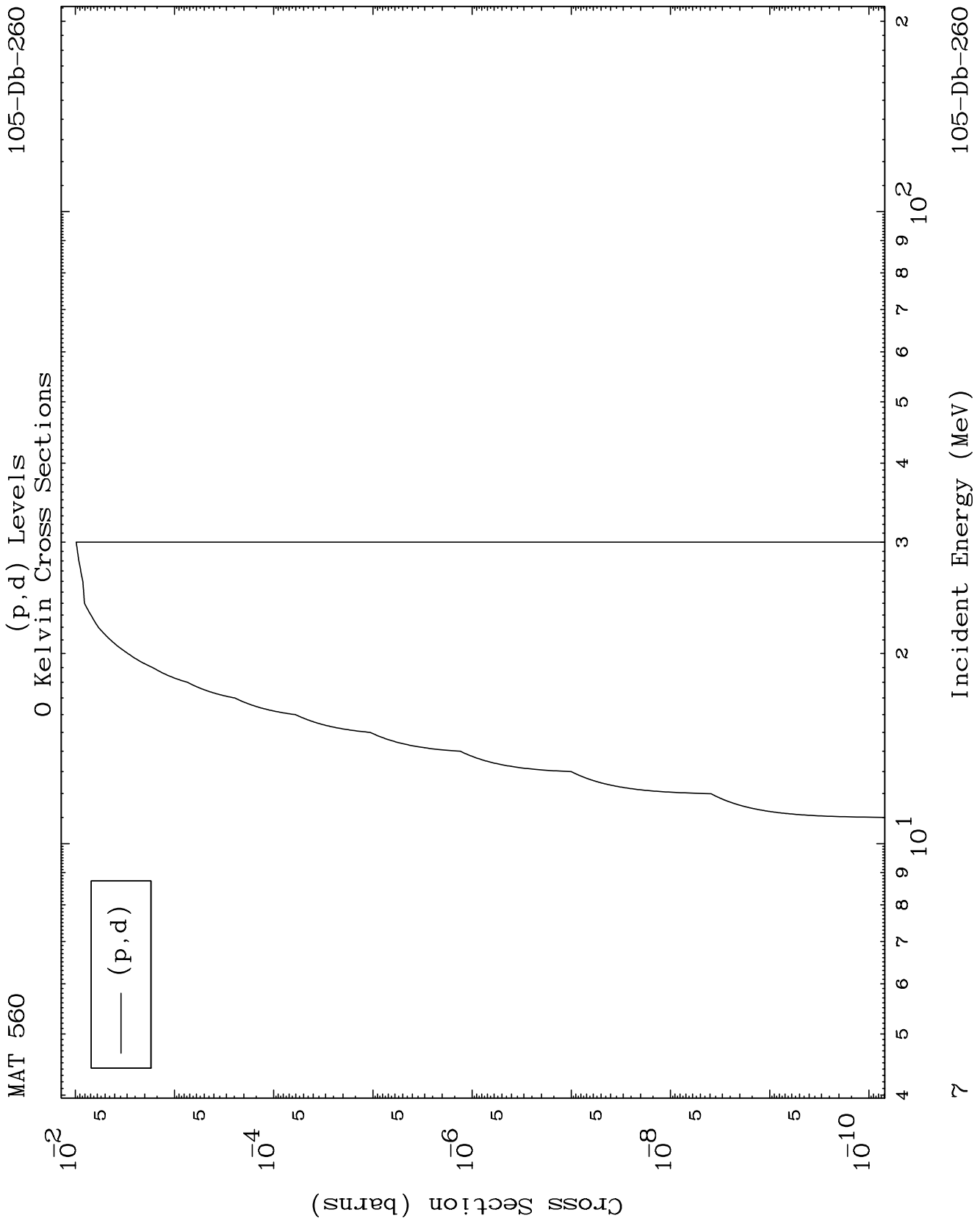
105-Db-260



6

Incident Energy (MeV)

105-Db-260

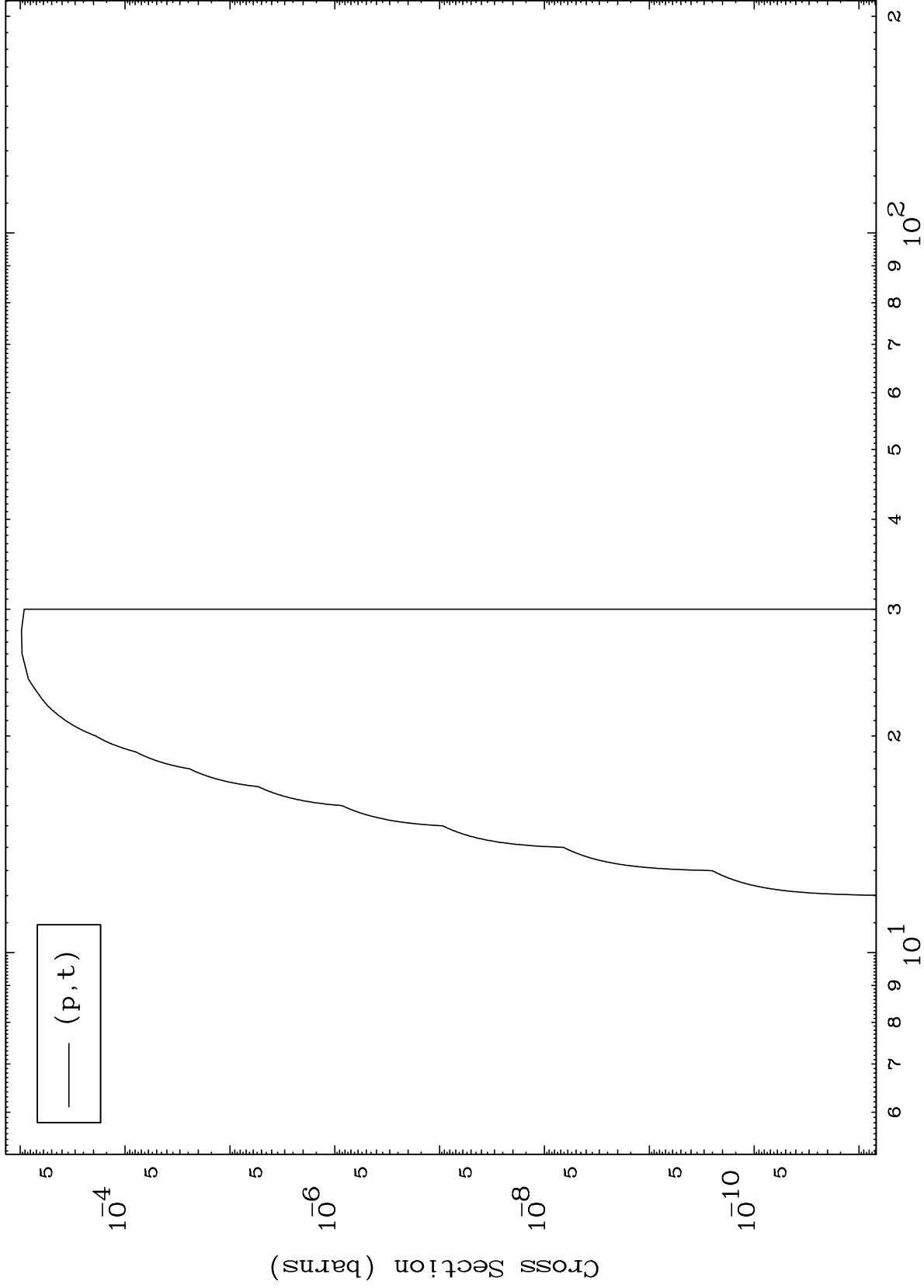




MAT 560

(p, t) Levels  
0 Kelvin Cross Sections

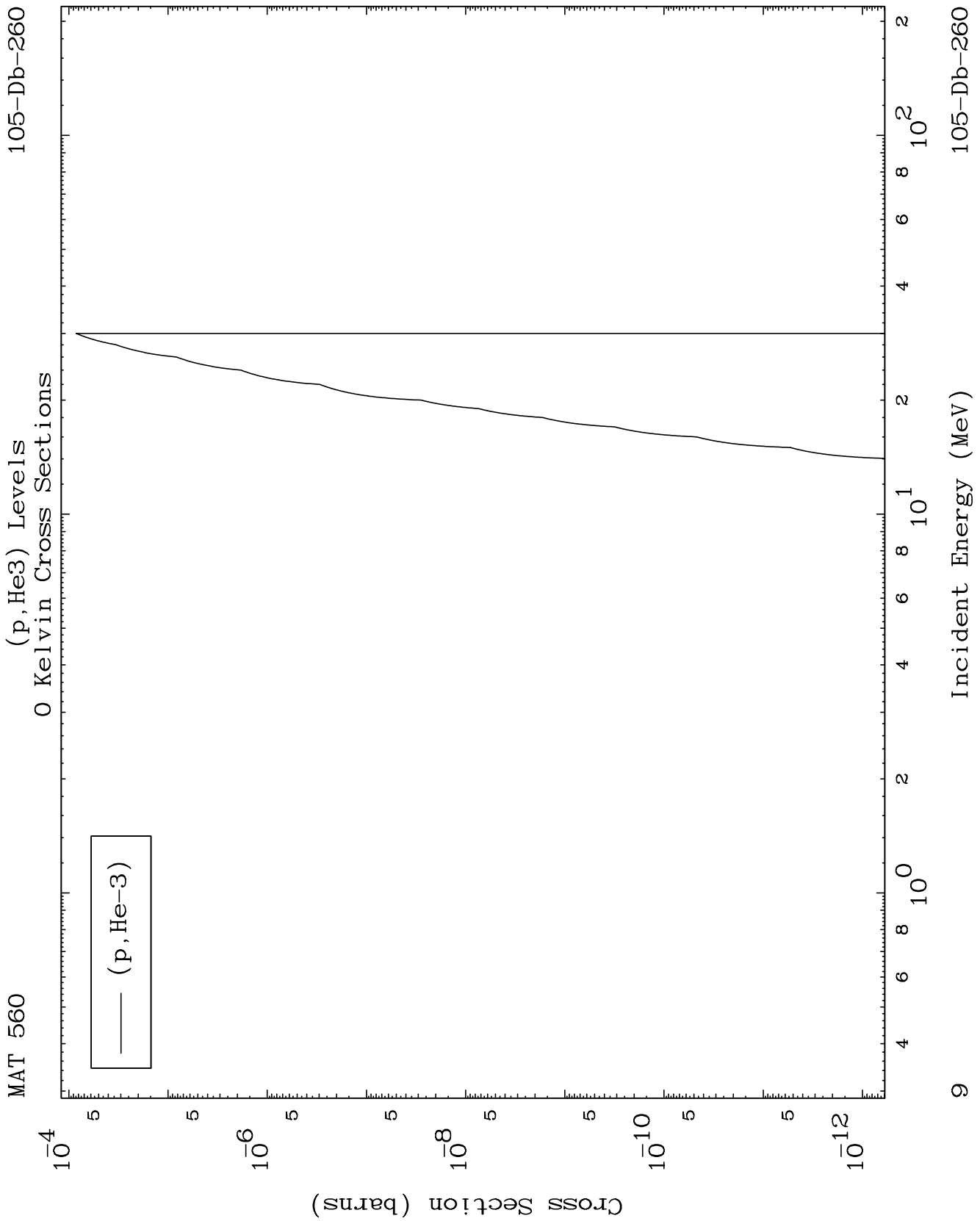
105-Db-260

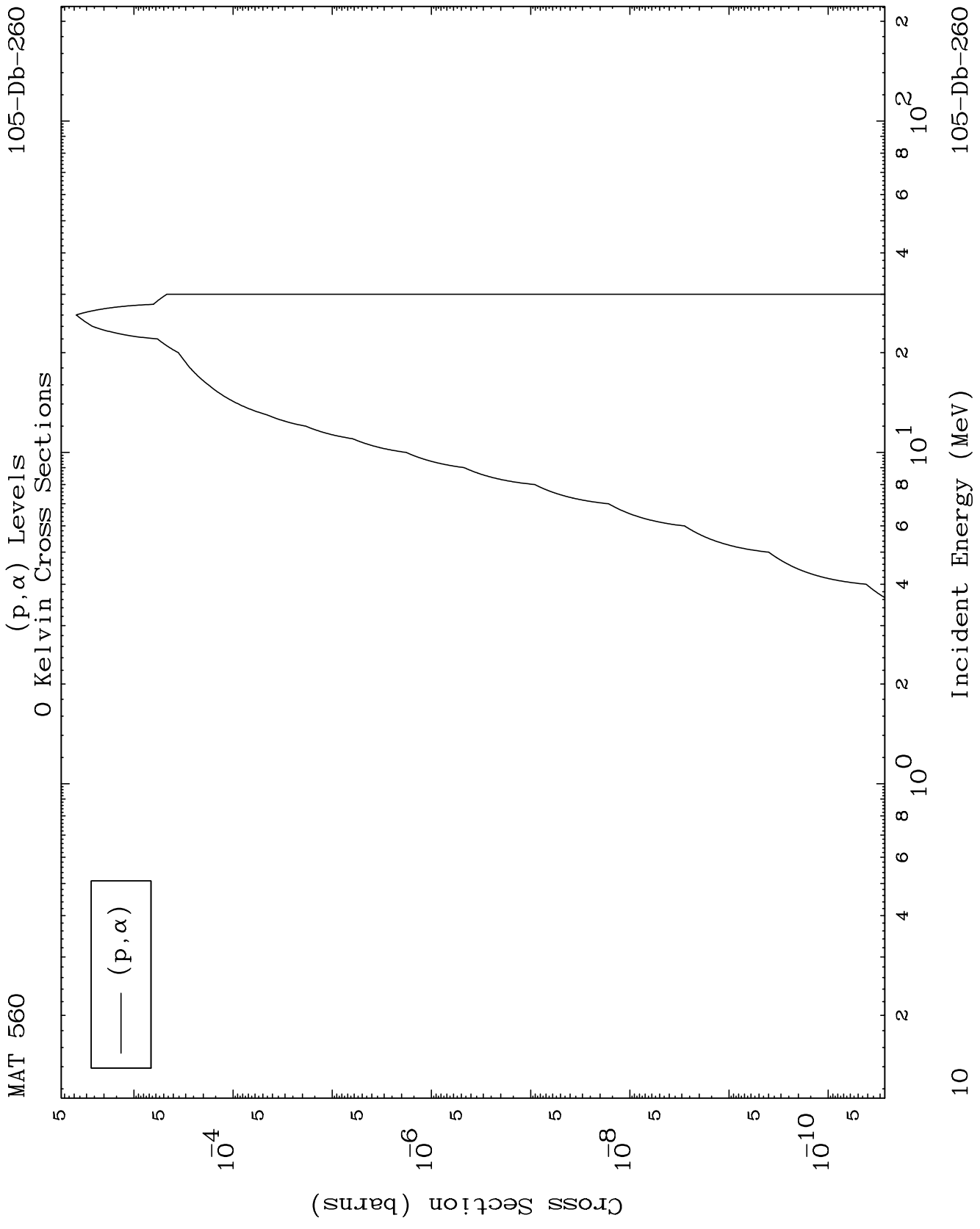


8

Incident Energy (MeV)

105-Db-260

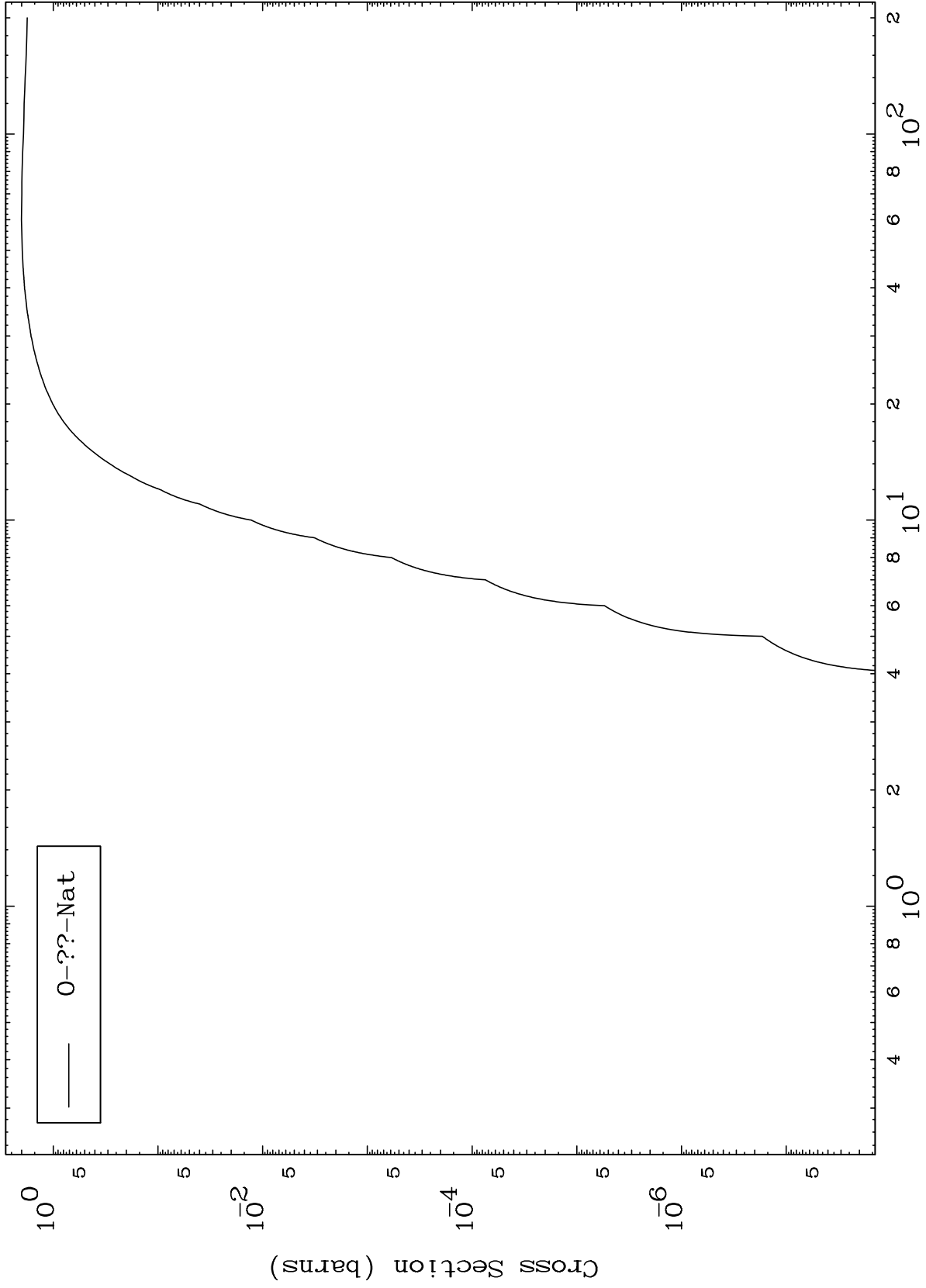


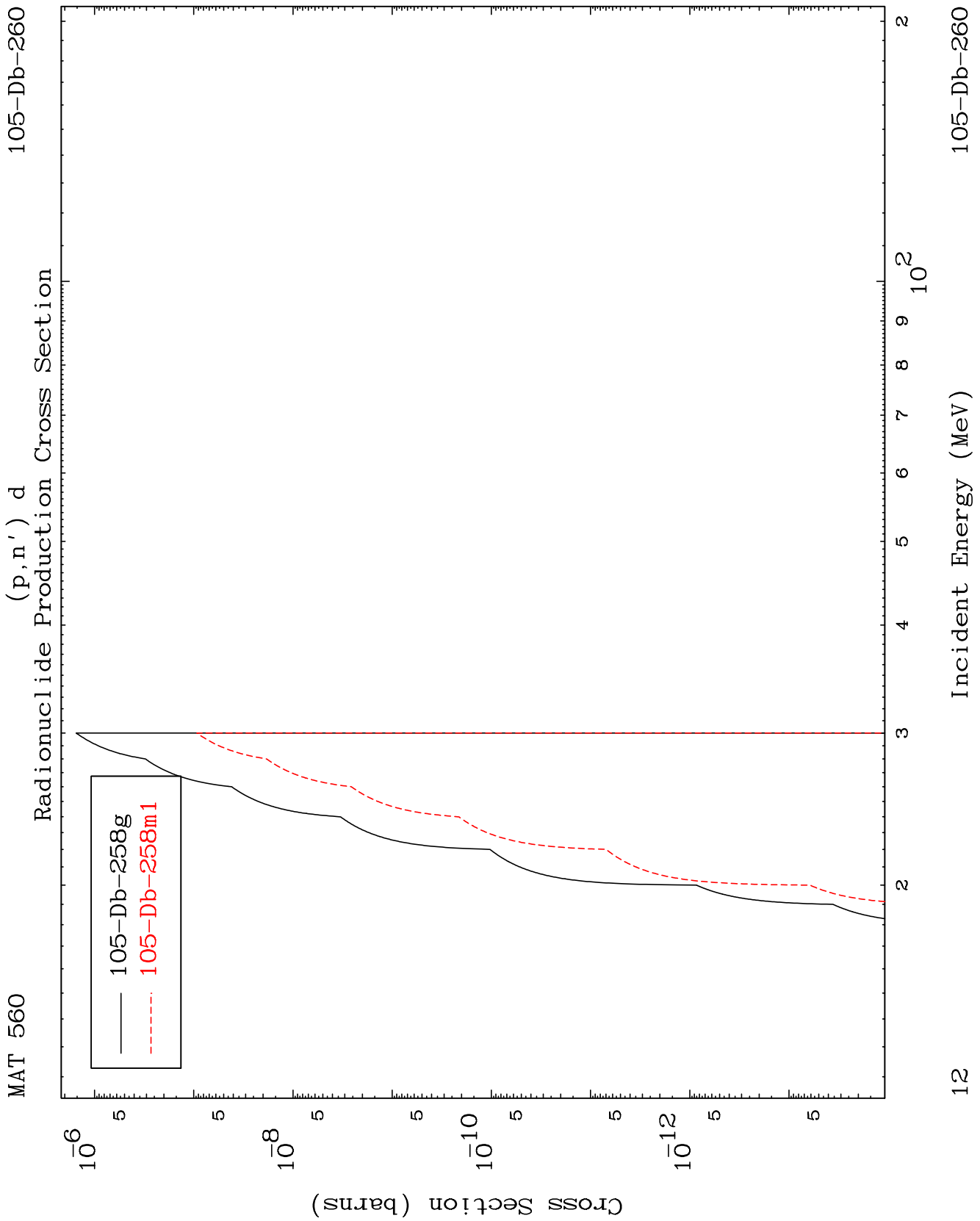


MAT 560

105-Db-260

Proton Fission  
Radionuclide Production Cross Section



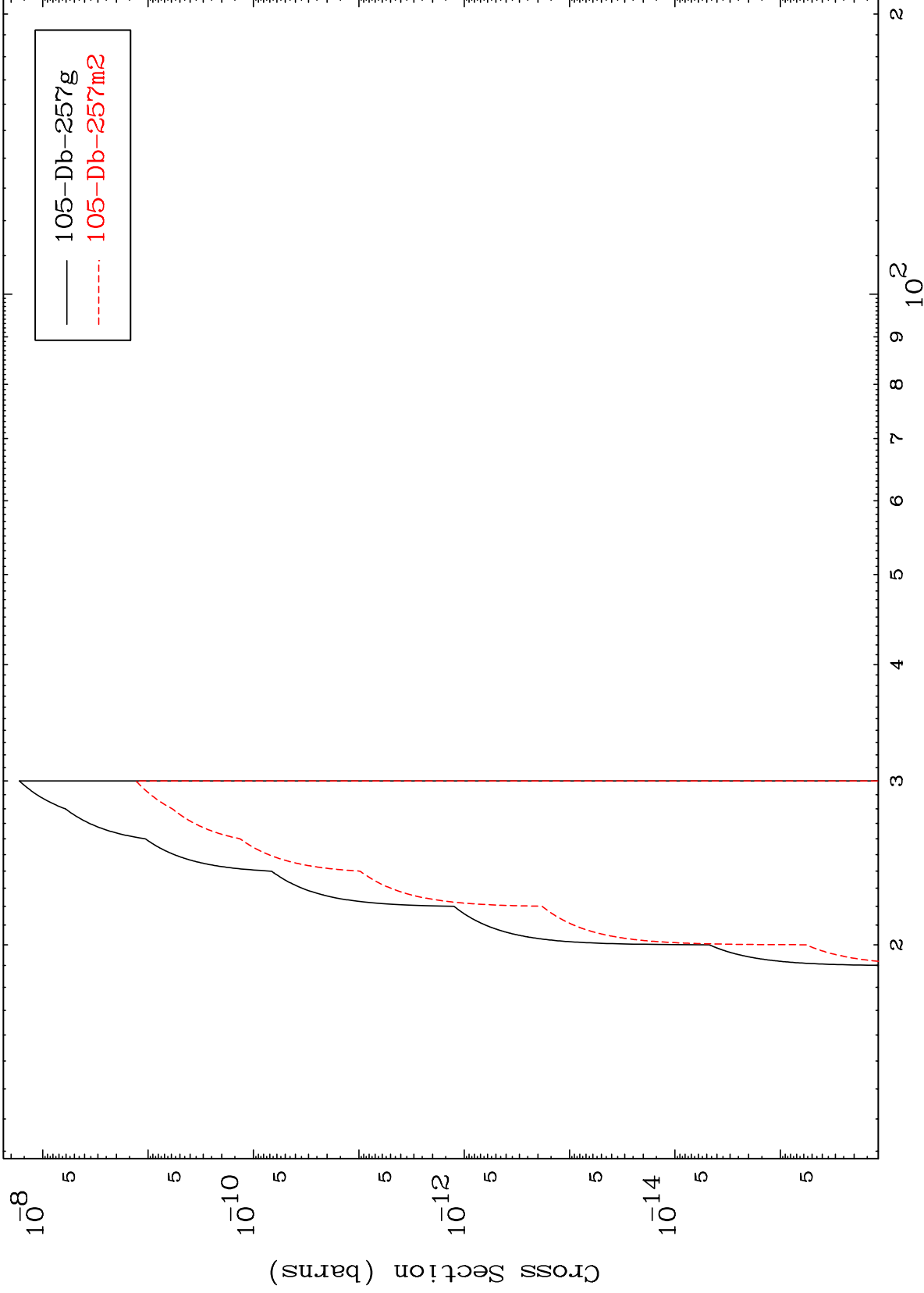


MAT 560

(p,n') t

105-Db-260

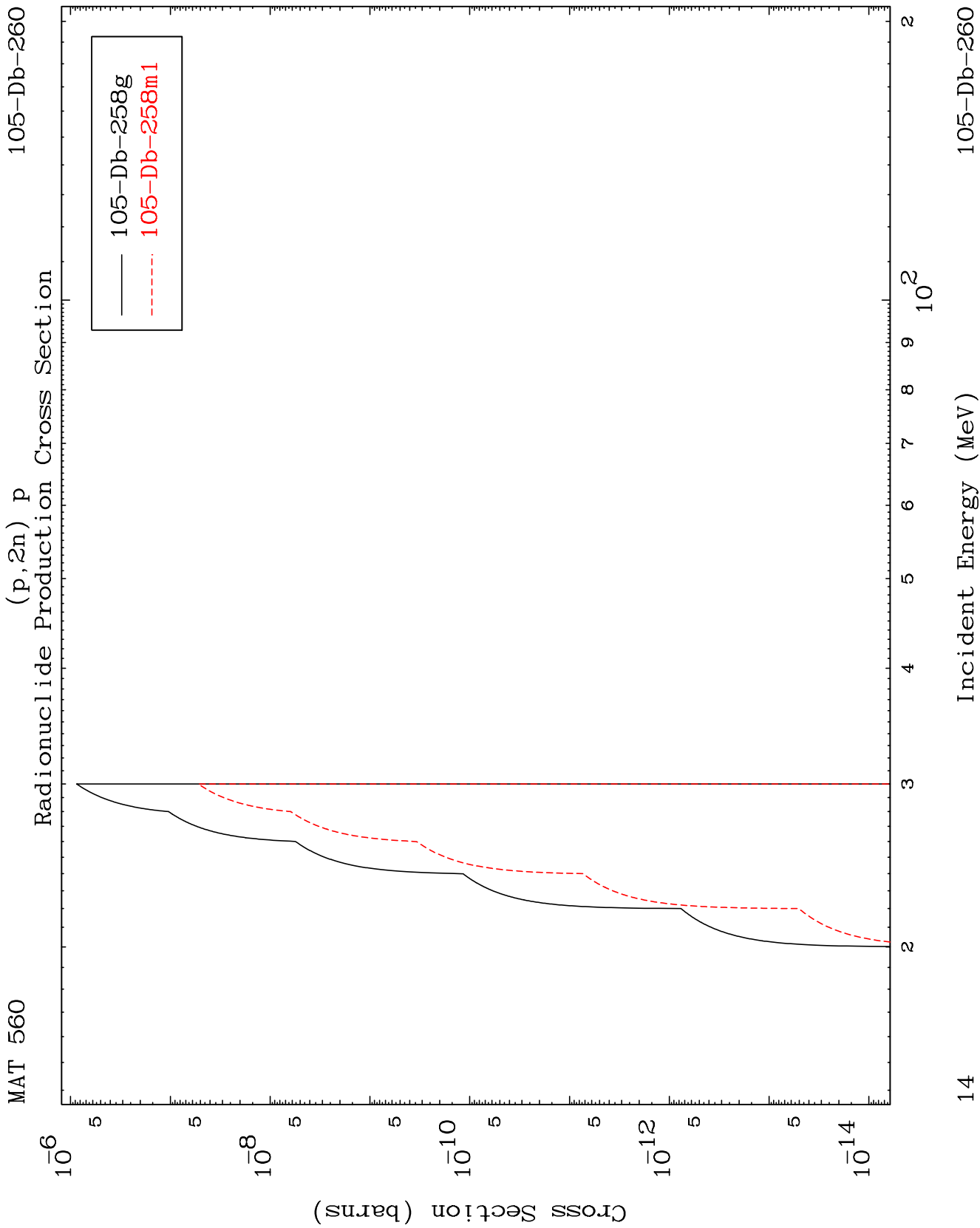
Radionuclide Production Cross Section

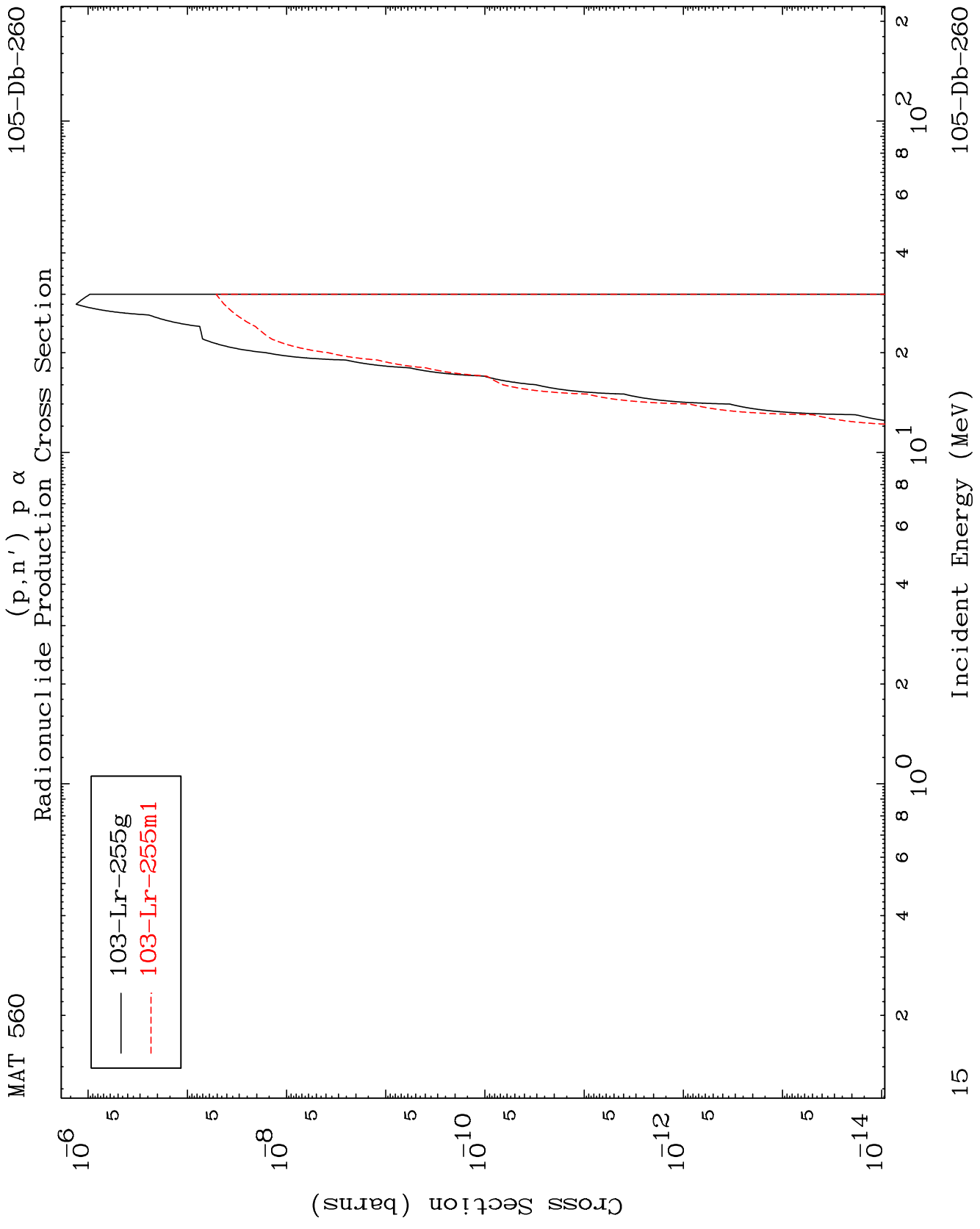


13

Incident Energy (MeV)

105-Db-260



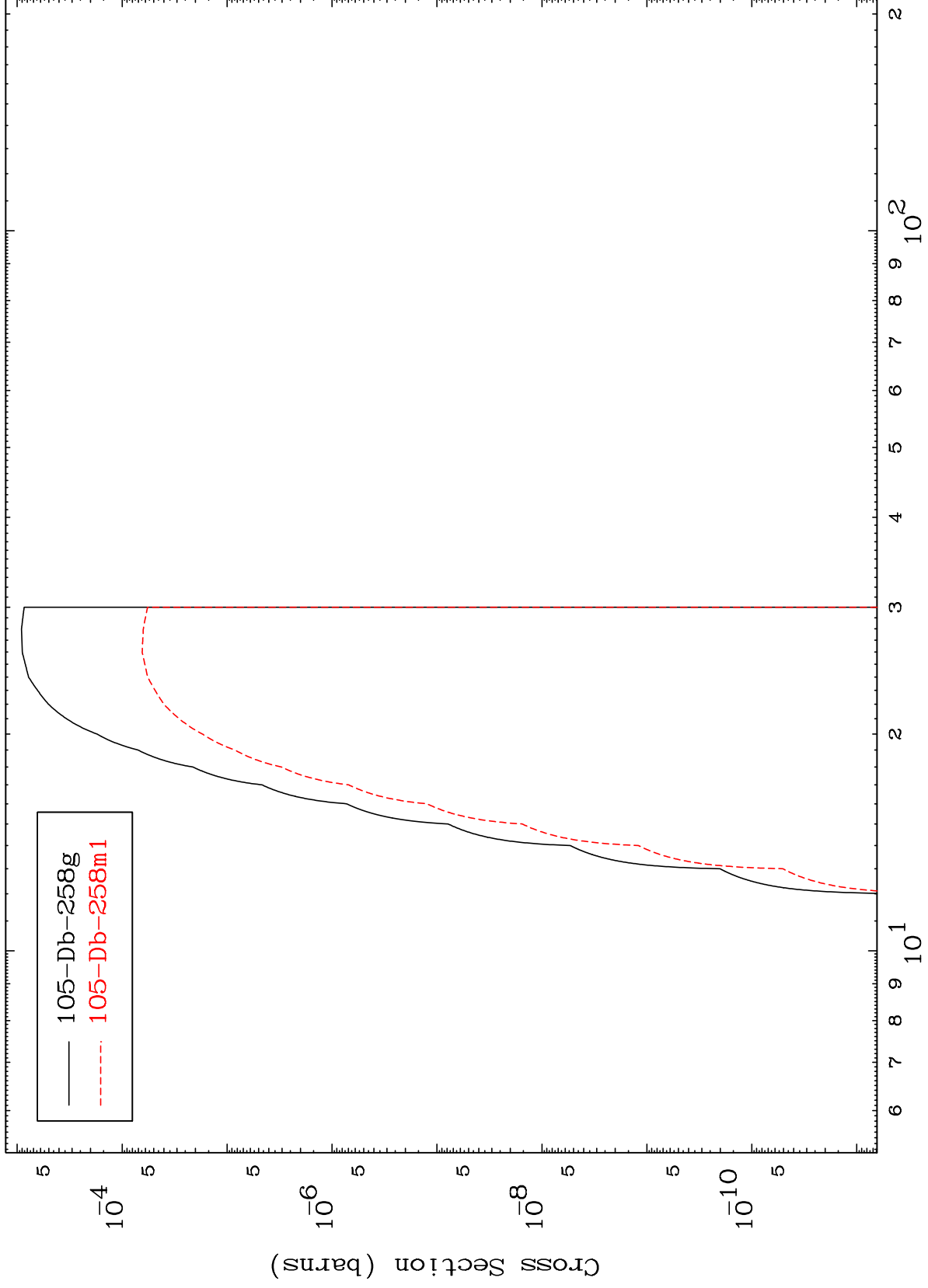




MAT 560

105-Db-260

(p, t)  
Radionuclide Production Cross Section



16

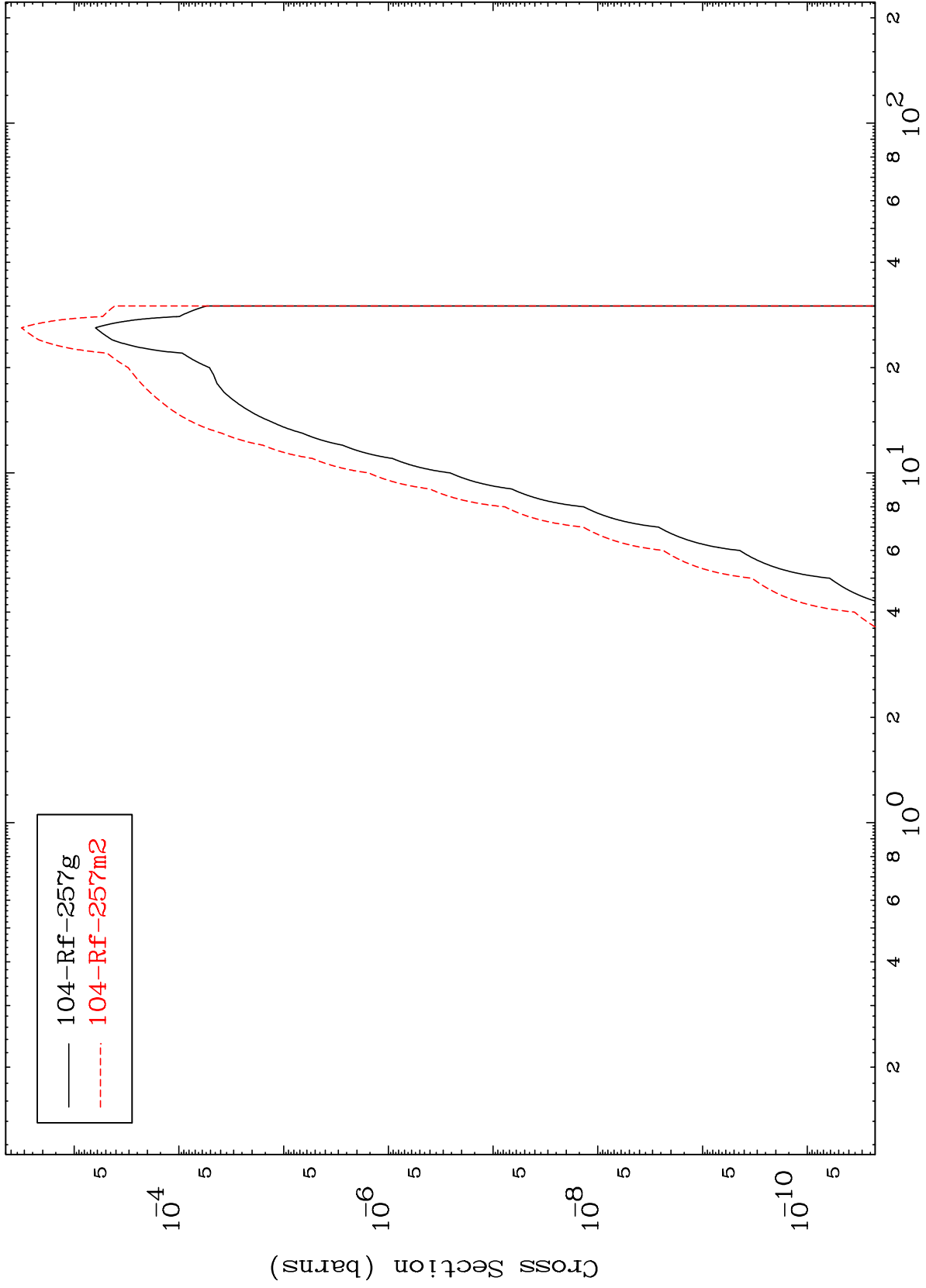
Incident Energy (MeV)

105-Db-260

MAT 560

105-Db-260

Radionuclide Production Cross Section  
(p,  $\alpha$ )

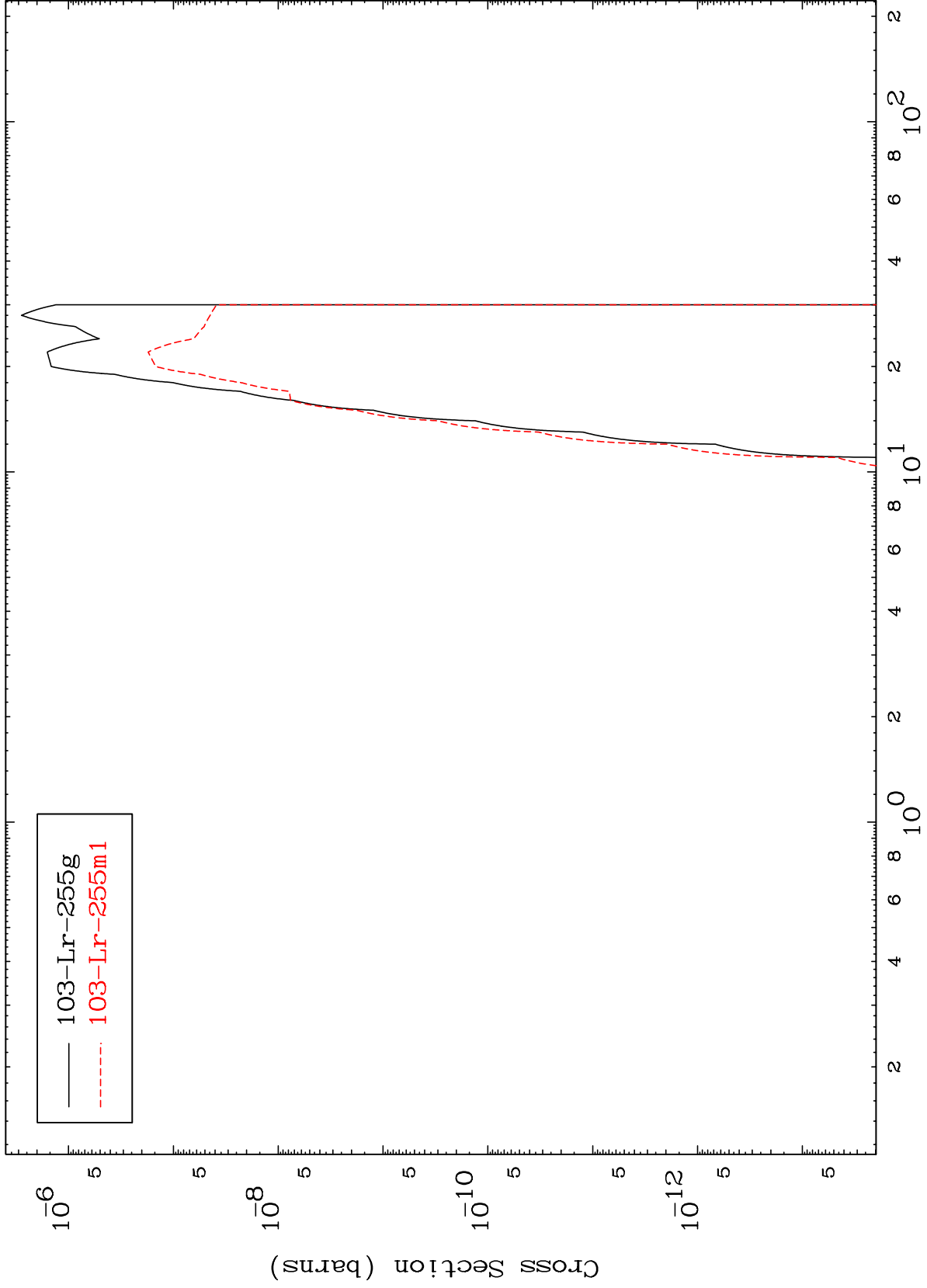


MAT 560

(p,d)  $\alpha$

105-Db-260

Radionuclide Production Cross Section



18

Incident Energy (MeV)

105-Db-260