

Program EVALPLOT
(Version 2018-1)

by

Dermott E. Cullen
(Present Contact Information)

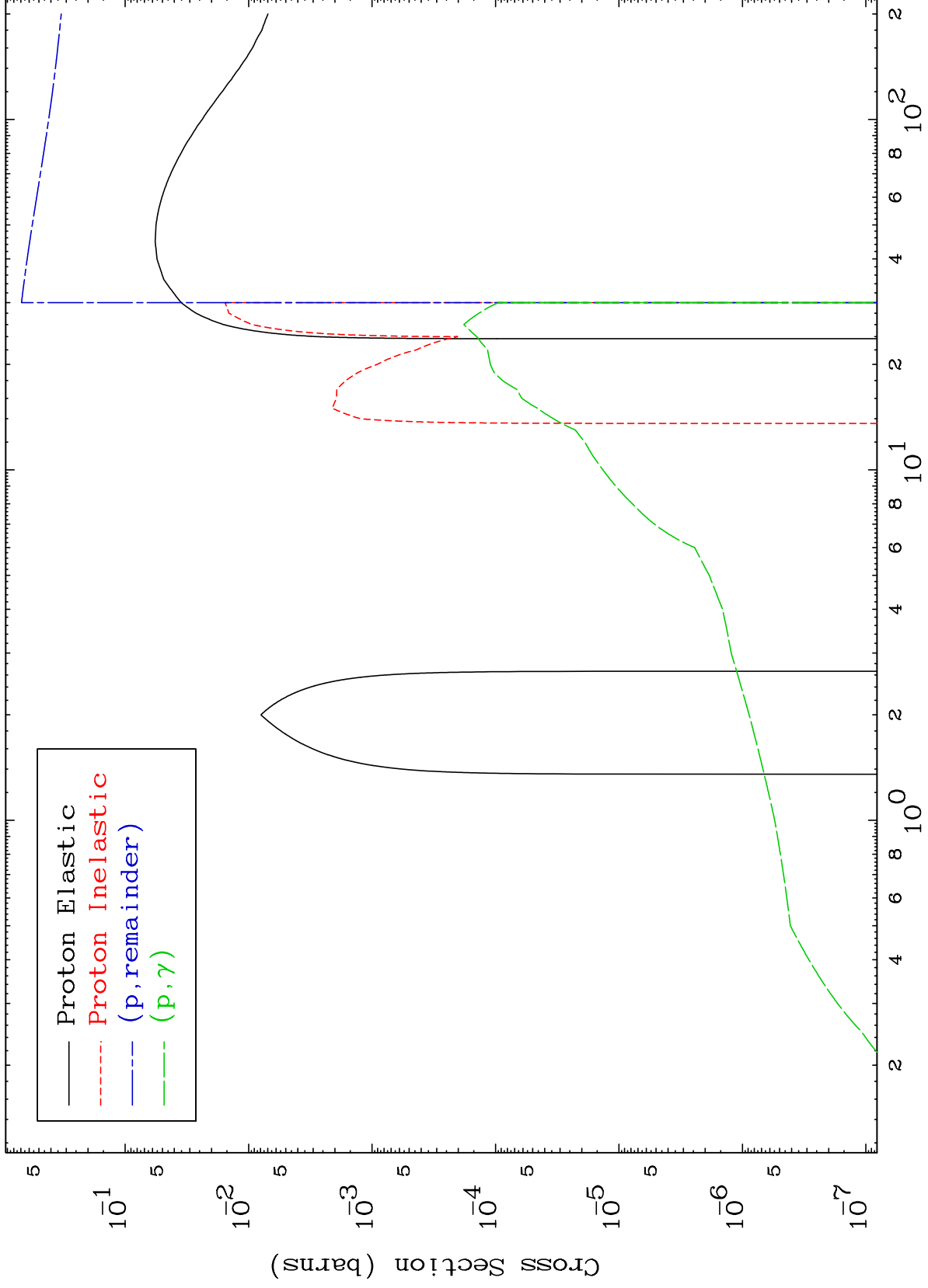
Dermott E. Cullen
1466 Hudson Way
Livermore, CA 94550
U.S.A.

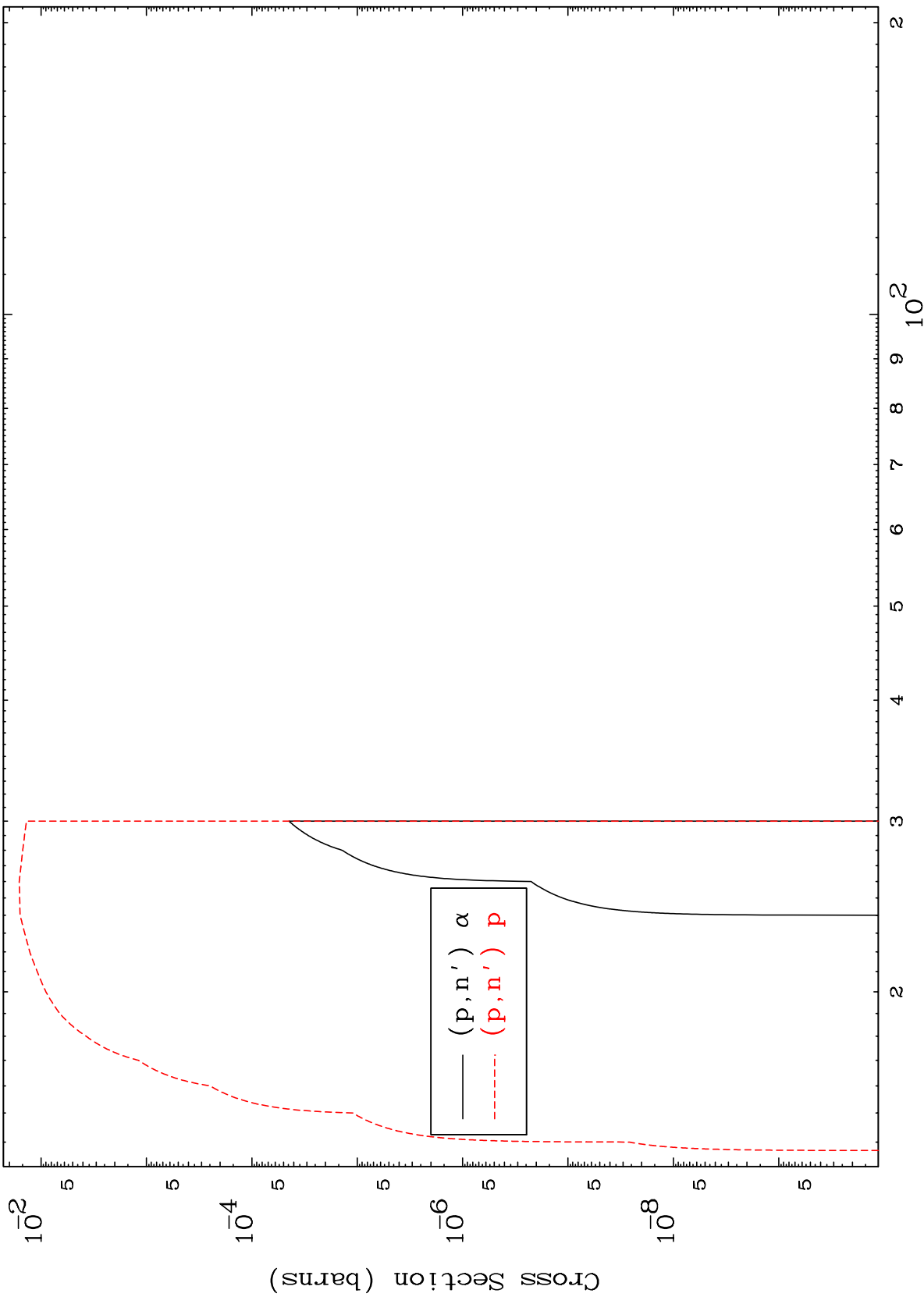
Tele: 925-443-1911

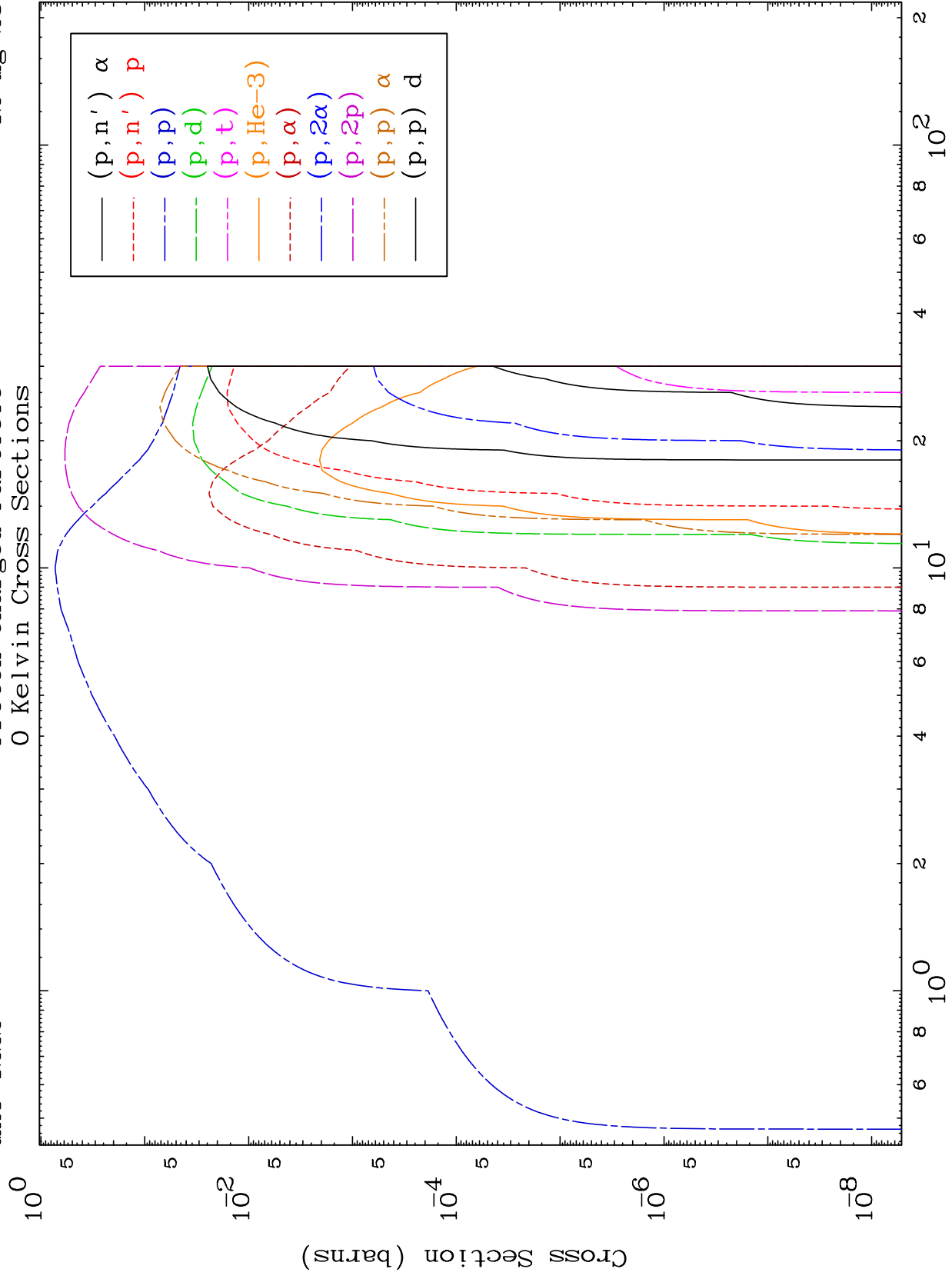
E.Mail:redcullen1@comcast.net

Web:redcullen1.net/HOMEPAGE.NEW

Press Mouse Button to Start





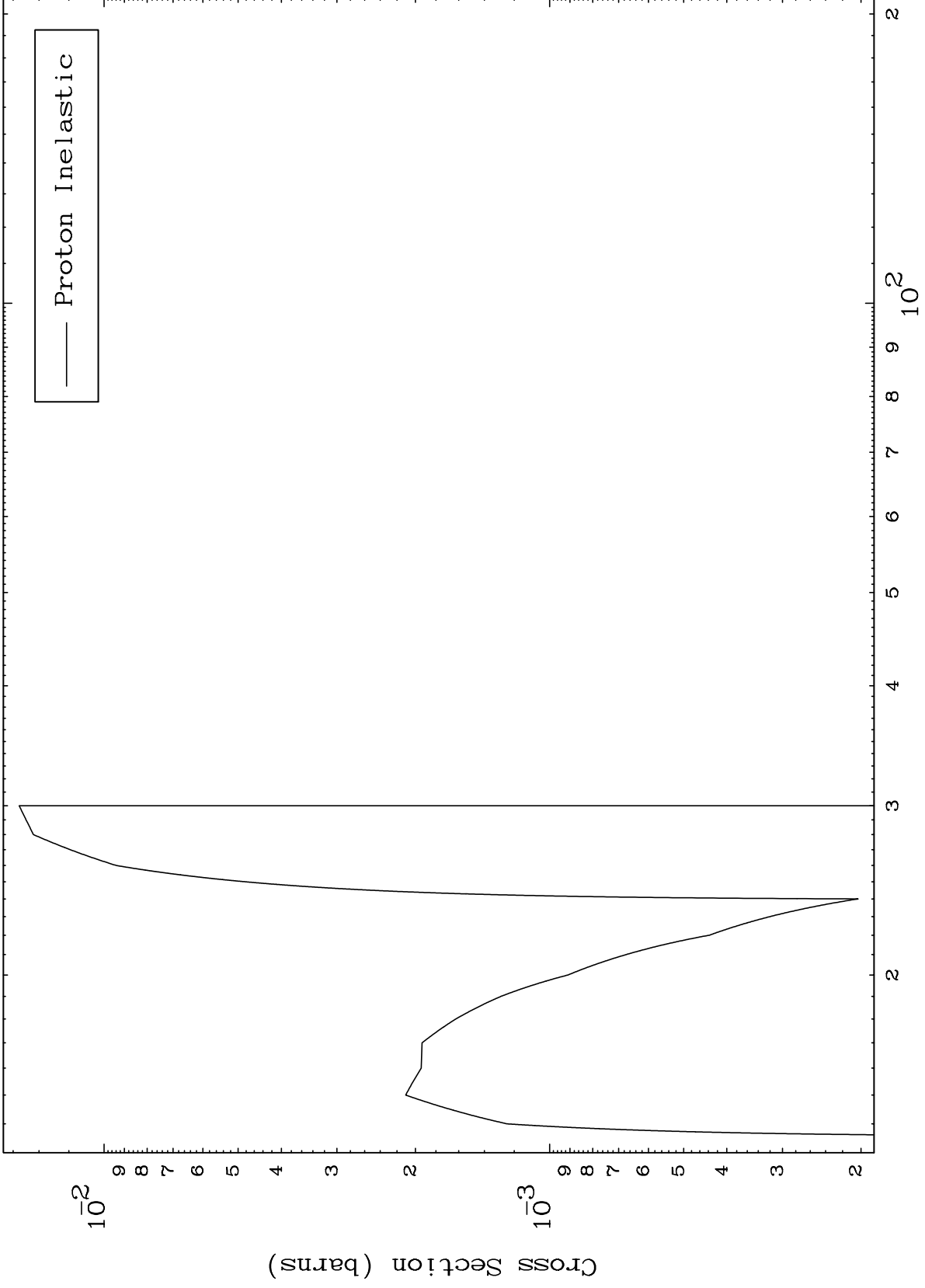


MAT 1222

(p,n') Level

12-Mg-23

0 Kelvin Cross Sections



4

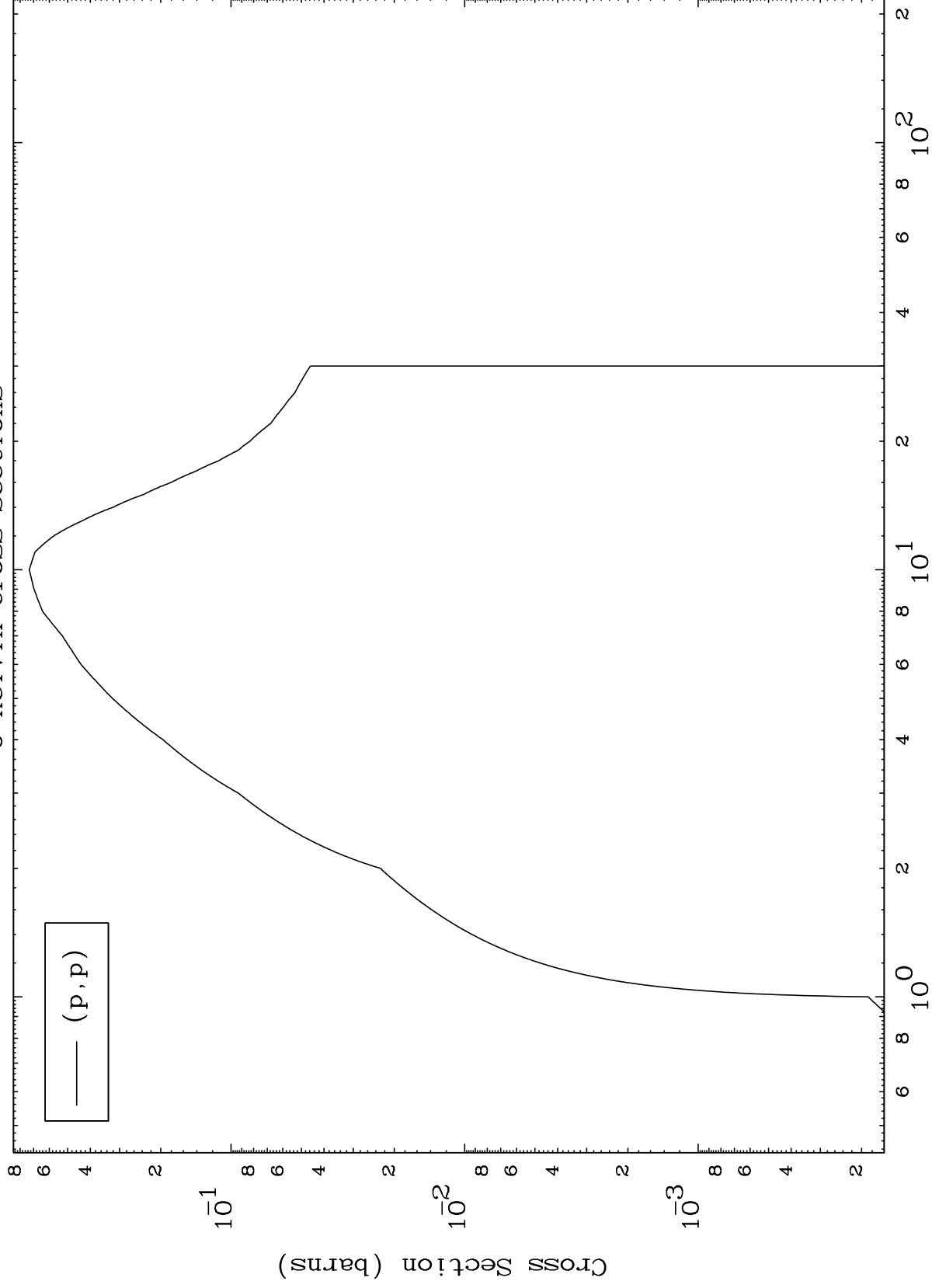
Incident Energy (MeV)

12-Mg-23

MAT 1222

(p,p) Levels
0 Kelvin Cross Sections

¹²Mg-23



5

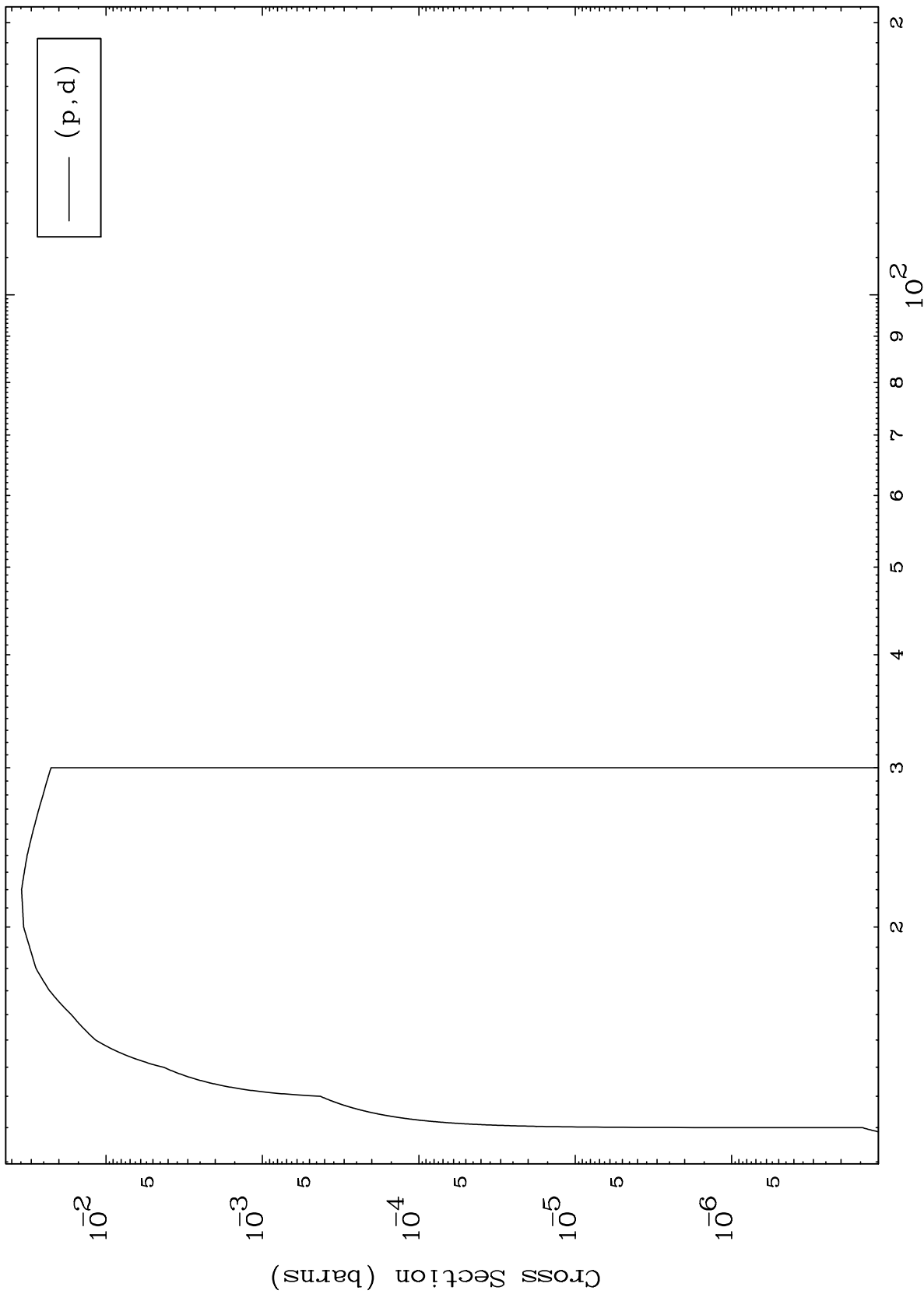
Incident Energy (MeV)

¹²Mg-23

MAT 1222

(p,d) Levels
0 Kelvin Cross Sections

12-Mg-23



Incident Energy (MeV)

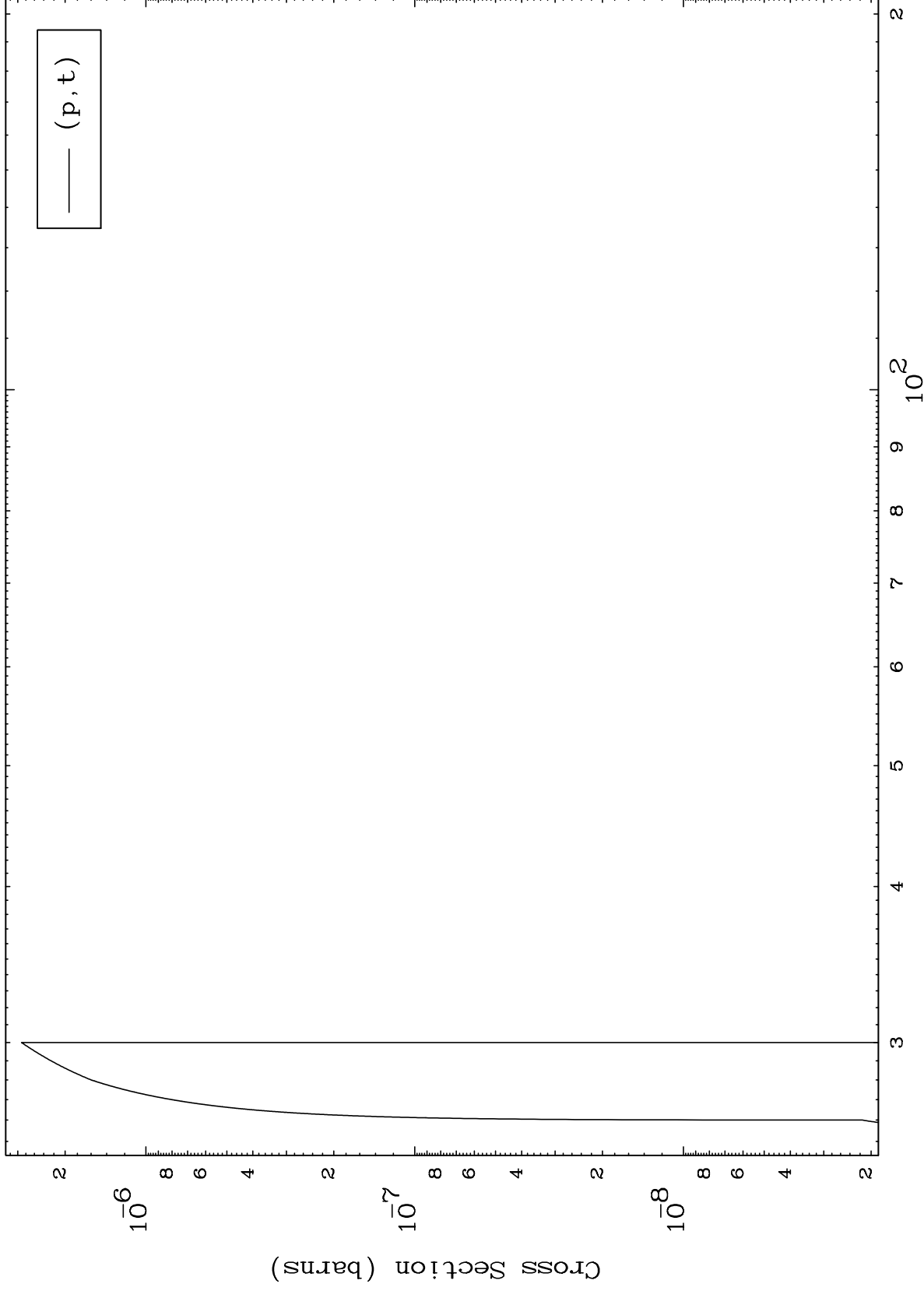
12-Mg-23

6

MAT 1222

(p, t) Levels
0 Kelvin Cross Sections

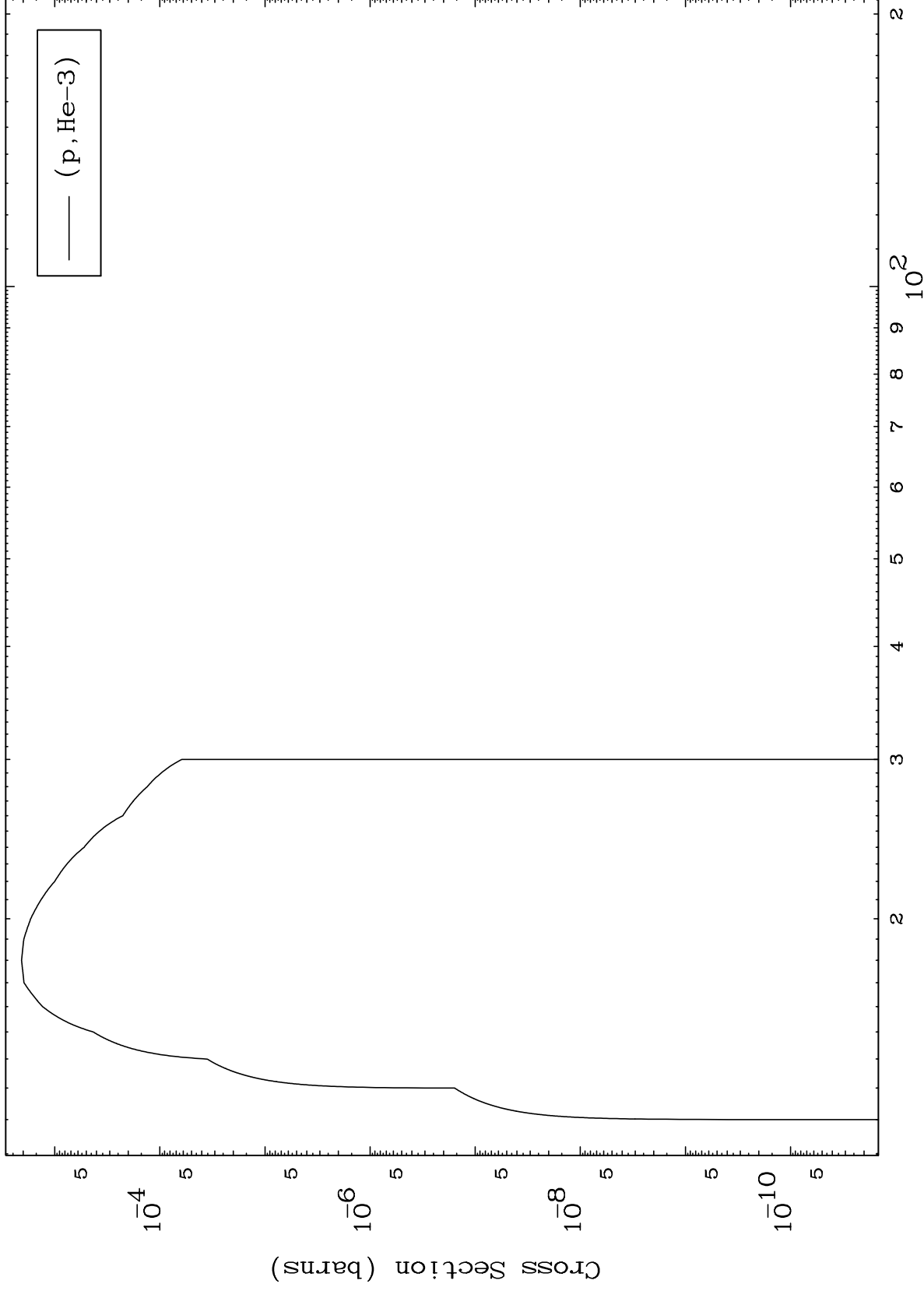
¹²Mg-23



7

Incident Energy (MeV)

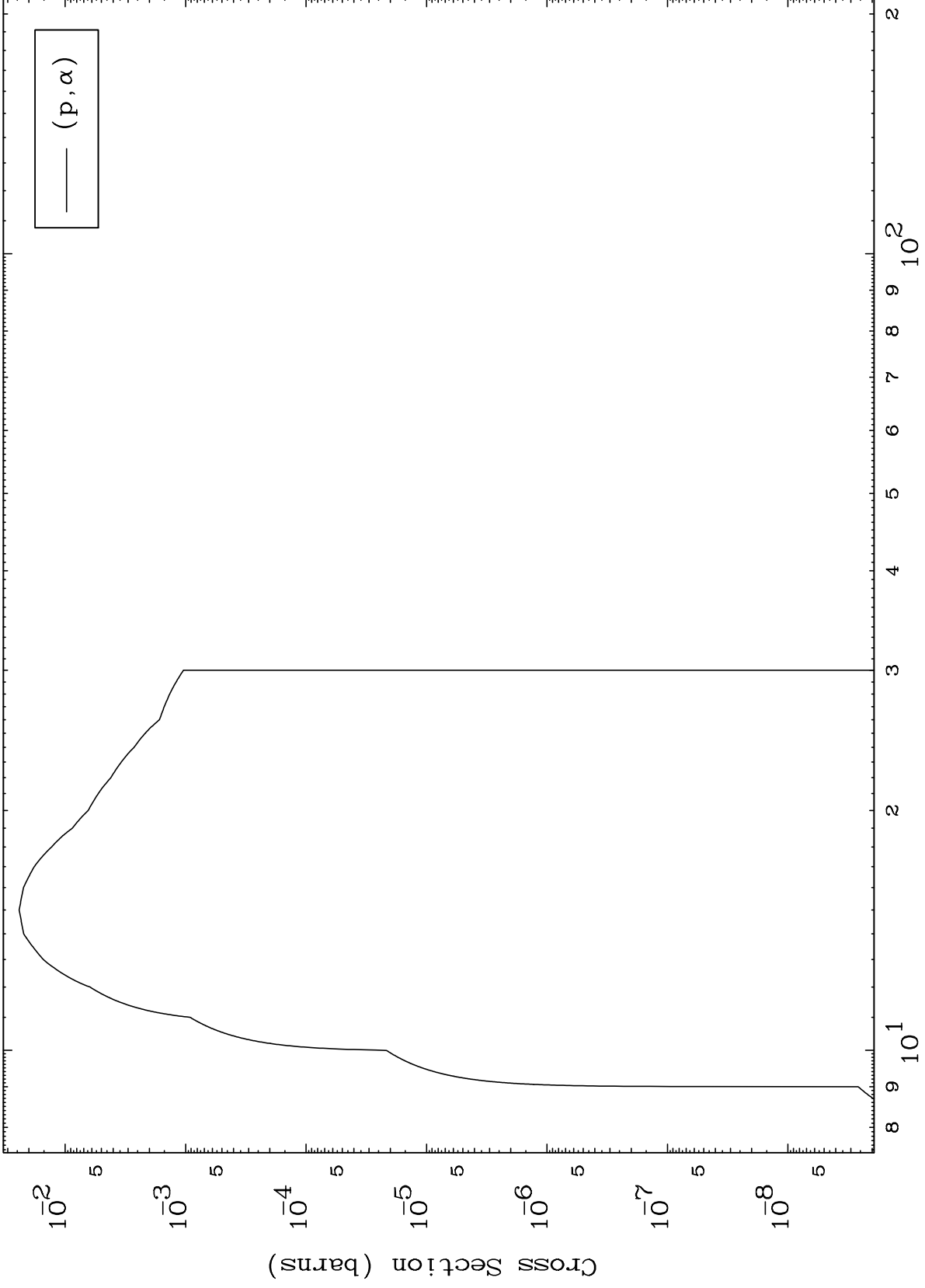
¹²Mg-23



MAT 1222

(p, α) Levels
0 Kelvin Cross Sections

$^{12}\text{Mg-23}$



9

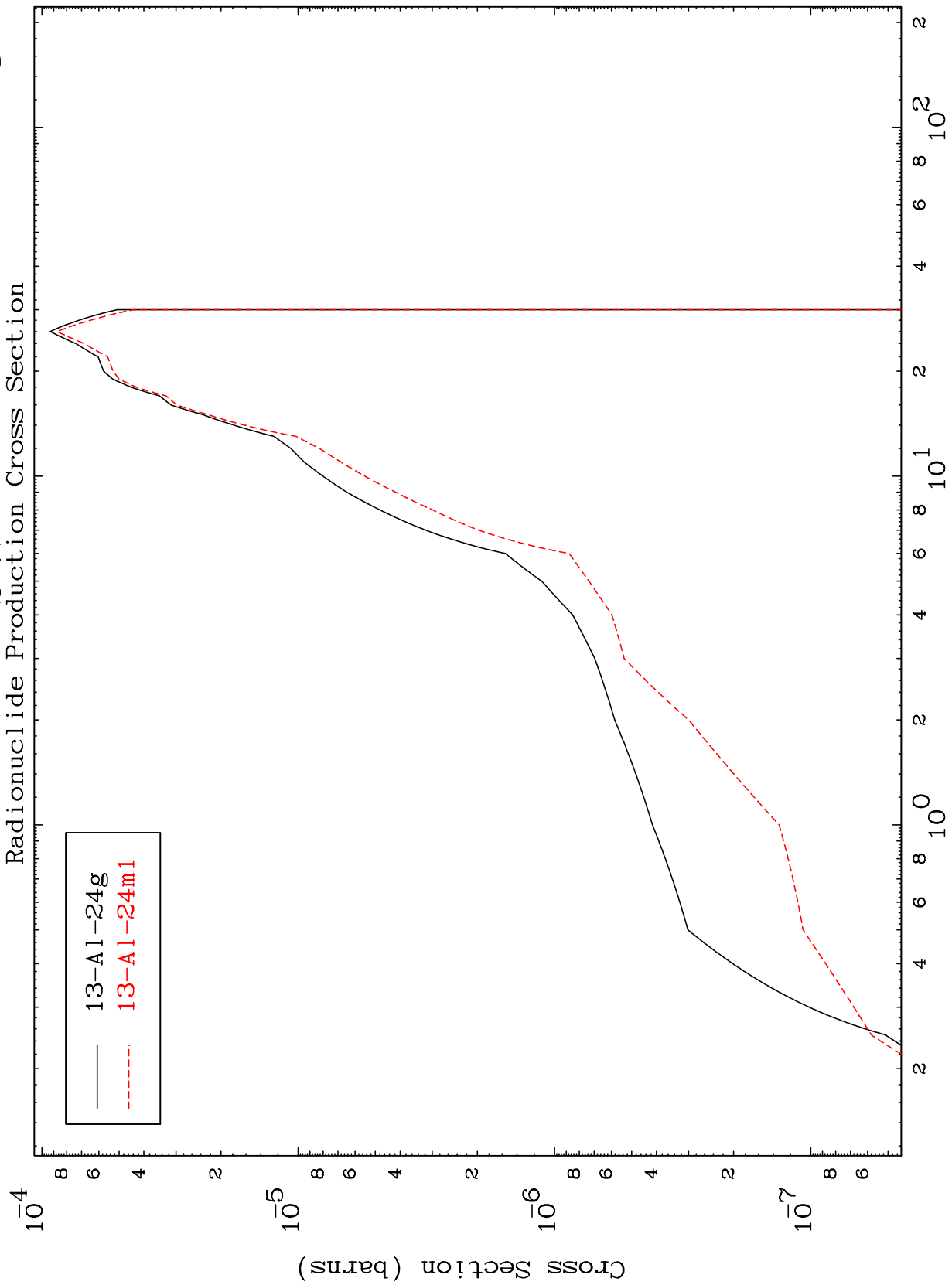
Incident Energy (MeV)

$^{12}\text{Mg-23}$

MAT 1222

12-Mg-23

Radionuclide Production Cross Section
(p, γ)



— 13-Al-24g
- - - 13-Al-24m1

12-Mg-23

Incident Energy (MeV)

10